



# Technical Service Bulletin

## 43 Self-leveling compressor inoperative

43 12 11 2018765/7 October 29, 2012. Supersedes Technical Service Bulletin Group 43 number 12-08 dated February 2, 2012 for reasons listed below.

Model(s)	Year	VIN Range	Vehicle-Specific Equipment
A6 (C6)	2004 - 2008	All	Air Suspension
A8 (D3)	2004 - 2010		
Q7	2007 - 2011		
A6 (C7)	2013		
A7 (C7)	2013		
A8 (D4)	2011 - 2013		

## Condition

REVISION HISTORY		
Revision	Date	Purpose
7	10/25/2012	Revised header data (added models and model years) Revised <i>Warranty</i>
6	2/2/2012	Revised <i>Warranty</i>
5	9/10/2010	Revised header data (Model years)
4	10/27/2009	Revised header data (Added Model year 2010)
3	12/11/2008	Revised <i>Service</i>
2	11/3/2008	Revised Title to include Repair Group

- The self-leveling system cannot be adjusted any more with the MMI.
- The compressor for the self-leveling system continues to run after switching off the engine and locking the vehicle.
- One of the following DTCs may be stored:
  - **DTC 0453** (restricted function through excess temperature).

- DTC 1583 (leak in the system recognized).
- DTC 1770 (sender for compressor temperature of self-leveling control G290).
- DTC 1772 (signal cable of pressure sender for self-leveling control G291).
- DTC 2645 (valves for self-leveling control).
- DTC 2646 (plausibility of self-leveling control).

## Technical Background

Because of poor performance or failure of the compressor for air suspension, the vehicle position cannot be adjusted. As a safeguard, the control module will lower the vehicle to the lowest position and illuminate the warning light. Drivability is not affected.

## Production Solution

Not applicable.

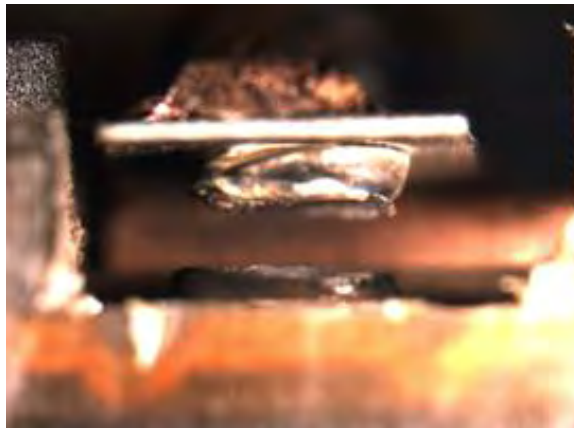
## Service

1. Use a direct current supply to check the compressor for the self-leveling system.
2. See the current flow diagram for the locations of the relay and the compressor.
3. Check the relay J403 of the compressor for the self-leveling system.

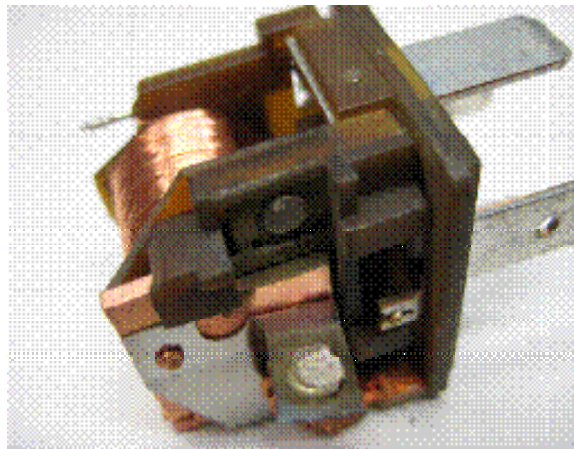
4. Open the relay and assess the contacts. Compare them with the contacts of Figures 1 to 3.

Is the wear is similar, or are there burn marks in the housing?

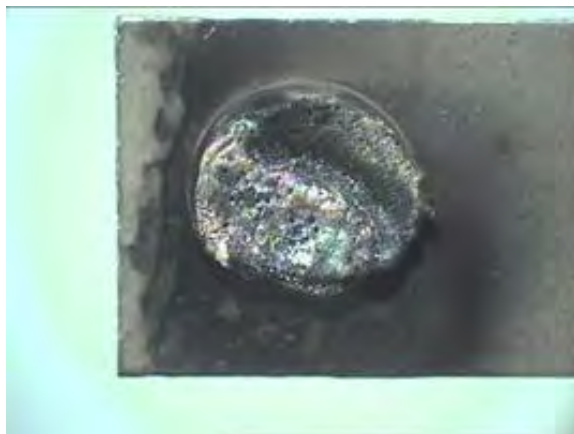
If the relay resembles Figures 1 to 3, replace the compressor and relay J403 for the self-leveling system.



*Figure 1. Strong erosion of both contacts.*



*Figure 2. Strong erosion of both contacts.*



*Figure 3. Strong erosion of the spring contact.*

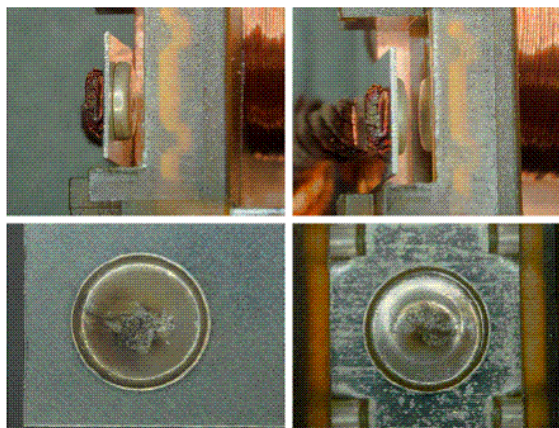
5. Discoloring of the strand is also a clear indication of permanent operation of the compressor (Figure 4).

Replace the compressor and relay J403 for the self-leveling system.



*Figure 4. Overheated strand.*

6. If the contacts resemble those in Figure 5 and the compressor has a working noise similar to a comparable vehicle, replace *only* the opened relay J403 for the self-leveling system.



*Figure 5. Contacts with minor marks; relay OK.*

## Warranty

<b>Claim Type:</b>	Use applicable claim type. Vehicle may be outside any warranty, in which case this Technical Service Bulletin is informational only.
<b>Service Number:</b>	4315
<b>Damage Code:</b>	0040
<b>Labor Operations:</b>	A6 (2005 – 2008):

# Technical Service Bulletin



	Compressor remove and install	4315 1950	70 TU
	Or Compressor remove and install with charge air cooler	4315 1951	90 TU
	Front bumper cover remove and install	6329 1900	90 TU
	Central electronics cover remove and install	9793 1900	70 TU
	Relay for suspension compressor inspect	4315 1999	10 TU
	<b>A8 V8 (2004 – 2010):</b>		
	Compressor remove and install	4315 1900	90 TU
	Shelf under dash panel remove and install	6818 1900	50 TU
	Relay for suspension compressor inspect	4315 1999	10 TU
	<b>S8 and W12 (2005 – 2010):</b>		
	Compressor remove and install	4315 1950	70 TU
	Lock carrier loosened and fastened	5038 0900	160 TU
	<b>Audi Q7:</b>		
	Compressor remove and install	4315 1900	70 TU

# Technical Service Bulletin



	Shelf under dash panel remove and install	6818 1900	30 TU
	Relay for suspension compressor inspect	4315 1999	10 TU
	<b>A8 (model year 2011 forward)</b>		
	Compressor remove and install	4315 1900	50 TU
	Shelf under dash panel remove and install	6818 1900	30 TU
	Relay for suspension compressor inspect	4315 1999	10 TU
	<b>S6 / S7 (model year 2013 forward):</b>		
	Compressor remove and install	4315 9999	60 TU
	Relay for suspension compressor inspect	4315 1999	20 TU
<b>Diagnostic Time:</b>	GFF	0150 0000	Time stated on diagnostic protocol (10 TU Max)
	Road test prior to service procedure	No allowance	0 TU
	Road test after service procedure	No allowance	0 TU
	Technical diagnosis at dealer' s discretion (Refer to Section 2.2.1.2 and Audi Warranty Online for DADP allowance details)		
<b>Claim Comment:</b>	As per TSB #2018765/7		

# Technical Service Bulletin



---

All warranty claims submitted for payment must be in accordance with the *Audi Warranty Policies and Procedures Manual*. Claims are subject to review or audit by Audi Warranty.

## Additional Information

All parts and service references provided in this TSB are subject to change and/or removal. Always check with your Parts Department and service manuals for the latest information.