



# SERVICE BULLETIN

Classification:	Reference:	Date:
BR12-003a	NTB12-086a	October 25, 2012

## 2011-2012 LEAF; BRAKE PEDAL SENSITIVE AT SPEEDS BELOW 15 MPH

This bulletin has been amended. The Title, Applied Vehicles, Applied VIN and Date, and If You Confirm sections have been revised. Please discard all previous versions.

**APPLIED VEHICLES:** 2011-2012 LEAF (ZE0)  
**APPLIED VIN AND DATE :** Built before JN1AZ0CP(\*)CT 023494 // June 6, 2012

### IF YOU CONFIRM

- Customer may experience some brake sensitivity at speeds below 15 mph. The customer may experience this issue while in stop-and-go traffic conditions.

And

- No DTCs are present in the Electrically-driven Intelligent Brake Control Unit.
  - If DTCs are present, refer to the specific section of the applicable Electronic Service Manual (ESM) and diagnose first.

### ACTION

1. Refer to step 14 in the **SERVICE PROCEDURE** to confirm this bulletin applies to the vehicle you are working on.
2. If this bulletin applies, reprogram the Electrically-driven Intelligent Brake Control Unit with CONSULT III plus (CIII plus).

**IMPORTANT:** The purpose of **ACTION** (above) is to give you a quick idea of the work you will be performing. You **MUST** closely follow the entire **SERVICE PROCEDURE** as it contains information that is essential to successfully completing this repair.

Nissan Bulletins are intended for use by qualified technicians, not 'do-it-yourselfers'. Qualified technicians are properly trained individuals who have the equipment, tools, safety instruction, and know-how to do a job properly and safely. NOTE: If you believe that a described condition may apply to a particular vehicle, DO NOT assume that it does. See your Nissan dealer to determine if this applies to your vehicle.

## CLAIMS INFORMATION

Submit a Primary Part (PFP) line claim using the following claims coding:

DESCRIPTION	PFP	OP CODE	SYM	DIA	FRT
Reprogram E-Act	(1)	PX65AA	ZE	32	0.5

(1) Refer to the electronic parts catalog (FAST) and use the appropriate ABS actuator assembly part number (46007-\*\*\*\*\*) as the Primary Part (PFP).

## SERVICE PROCEDURE

### Reprogram Electrically-driven Intelligent Brake Control Unit

1. Before continuing, it is **IMPORTANT** to make sure:

- **ASIST on the CONSULT PC has been freshly synchronized (updated).**
- **All CONSULT related software updates (if any) have been installed.**

**NOTE:** The CONSULT PC automatically gets all reprogramming software during ASIST synchronization.

### **CAUTION:**

- Turn off all cell phones and external Bluetooth devices within range of C-III plus.
- Do not touch C-III plus during reprogramming.
- Do not disconnect the AC adaptor during reprogramming.
- Do not disconnect the “plus” VI’s diagnostic cables during reprogramming.
- Do not touch the power (“ignition”) switch during reprogramming.
- Do not touch any electrical switch during reprogramming.

2. Have the **GR8 Multitasking Battery Diagnostic Station** (battery tester/charger) available and ready to use.

- For proper setup, go to Page 20, **GR8 Multitasking Battery Diagnostic Station**.
- Do not connect the battery tester/charger at this time. The battery tester/charger will be set up later in this bulletin.

**CAUTION:** Do not charge the High Voltage (HV) Lithium Ion battery during reprogramming.

### **NOTE:**

- Check to see if the timer for either charging or climate control is on. If on, turn it off and make sure to turn it back on after reprogramming.

3. Once all ASIST and CONSULT related updates have been verified/performed, attach the CONSULT PC to vehicle.
  - Connect the plus VI to the vehicle.
  - Connect the CONSULT PC to the plus VI with the USB cable.
  - Connect the AC adapter to the CONSULT PC.
  
4. Turn on the CONSULT PC, and then open C-III plus.
  
5. Depress the vehicle's power ("ignition") switch twice without depressing the brake pedal.
  - The meter and gauges will illuminate.

**CAUTION:** Do Not set the vehicle in "READY to drive" mode.

**NOTE:** Make sure all accessories are turned off.
  
6. After the plus VI is recognized, select **Reprogramming Configuration (Write)**.

**NOTE:** Make sure all applications other than C-III plus are closed.

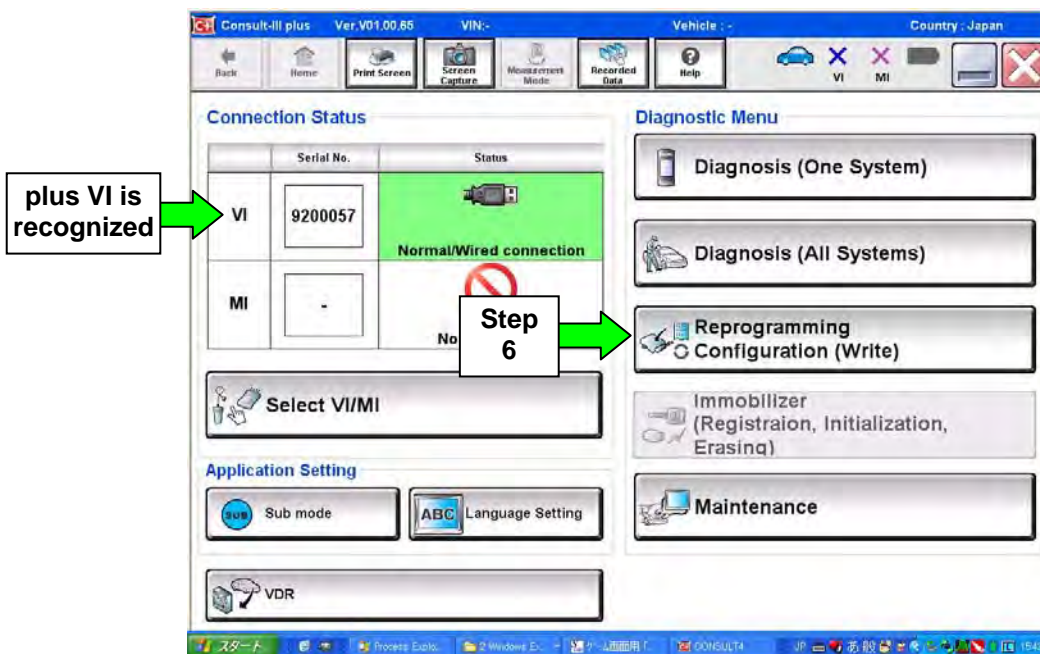


Figure 1

7. Select **Next**.

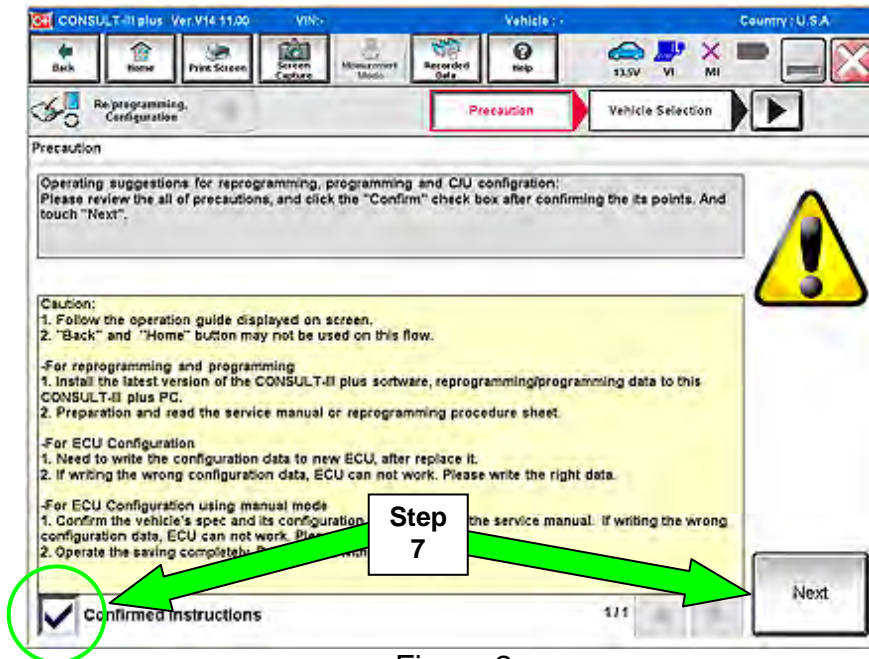


Figure 2

8. Select **LEAF** and **2011/ 2012** or **Automatic Selection (VIN)**.

- If **Automatic Selection (VIN)** is selected, wait for the **Reading VIN** screen to complete (picture not shown).

9. Select **Select**.

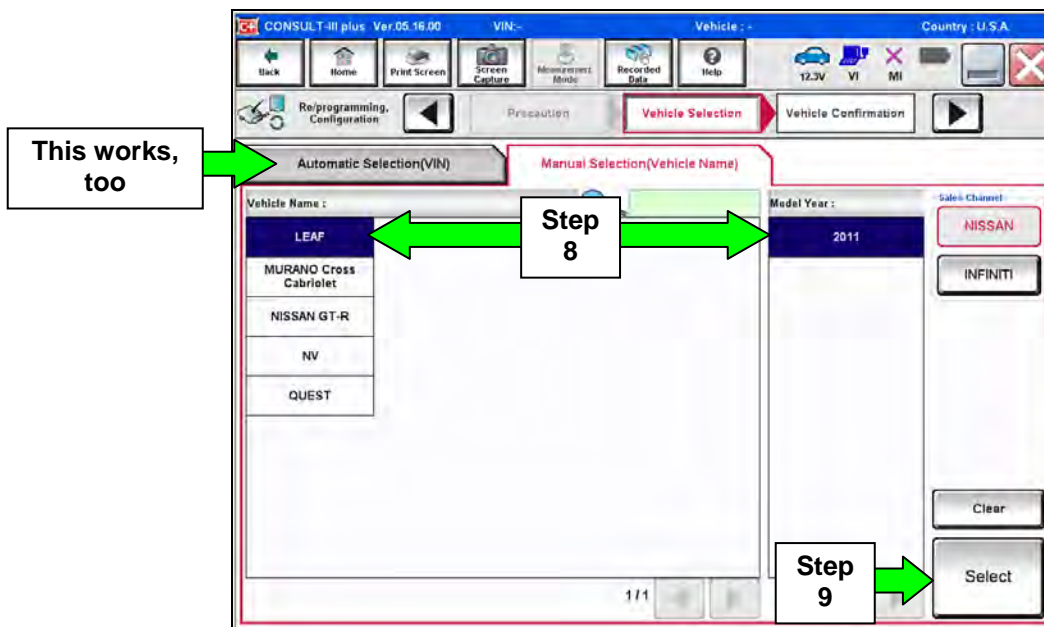


Figure 3

10. Verify the VIN in **VIN or Chassis #** matches that of the vehicle's.

- If the correct VIN exists, select **Confirm**.

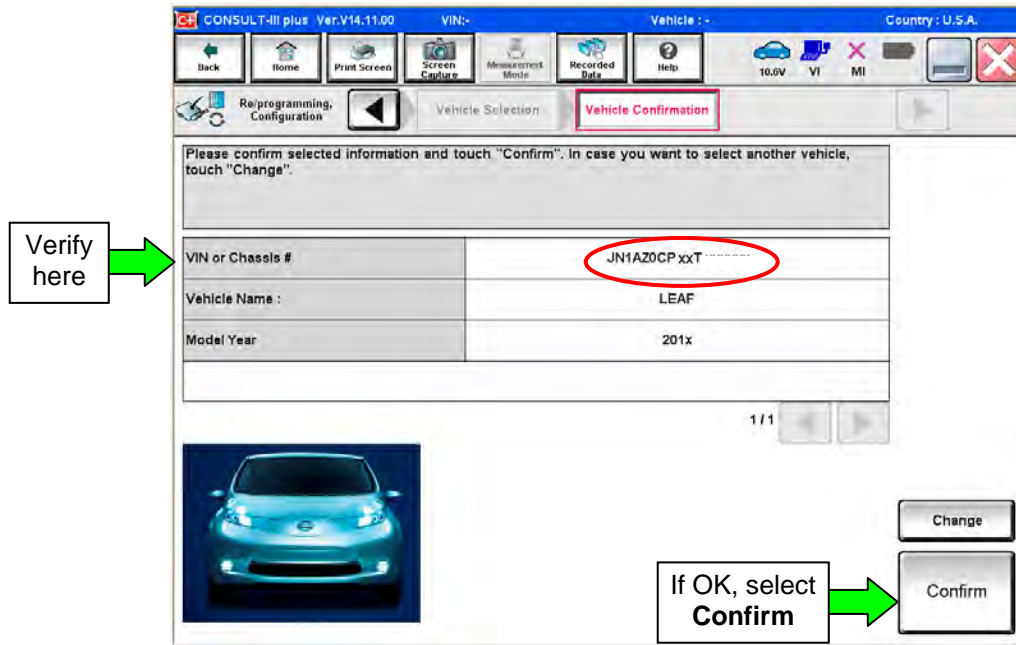


Figure 4

11. On the next screen, select **Confirm**.

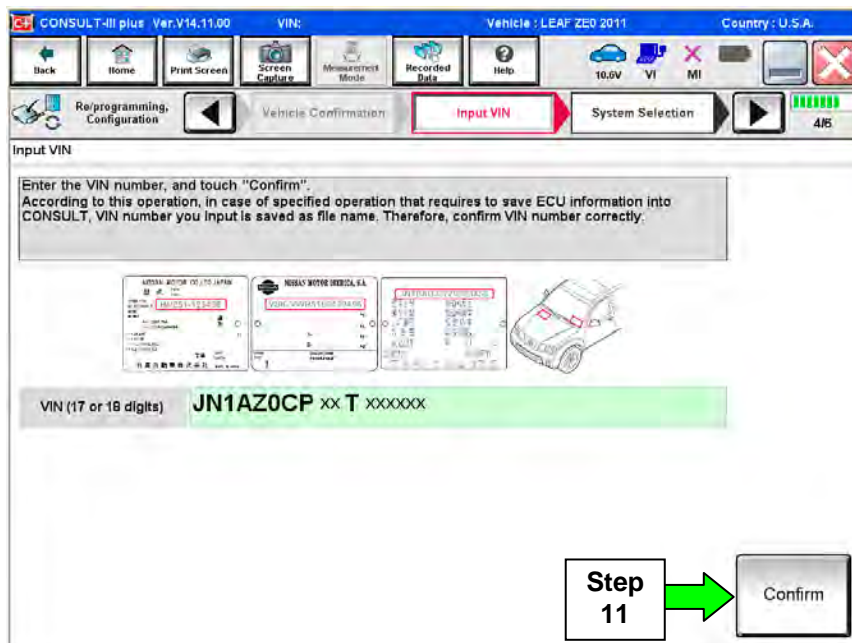


Figure 5

## 12. Select **BRAKE**.

- Wait for system call to complete.

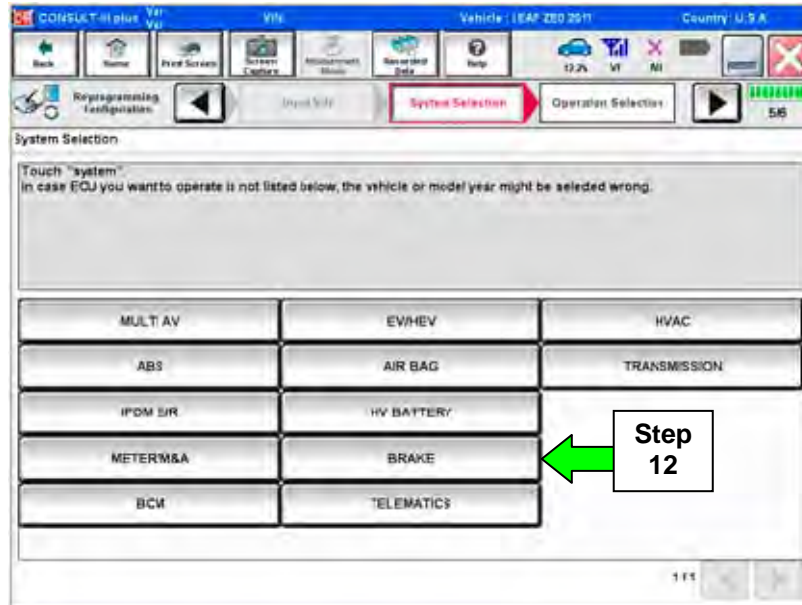


Figure 6

## 13. Select **Reprogramming**.

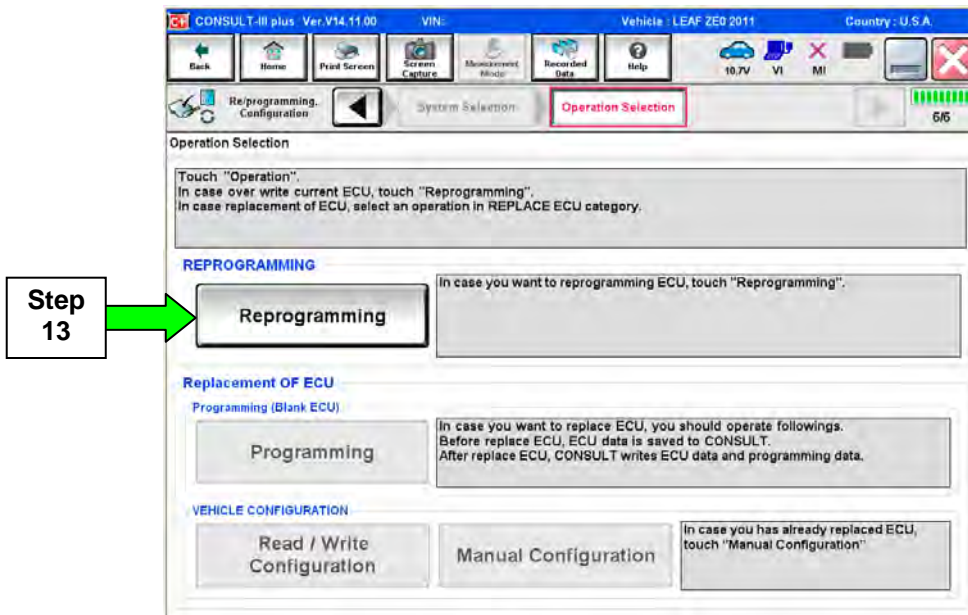


Figure 7

14. Write down the **Part Number** on the vehicle's repair order (see Figure 8).

- If the **BRAKE** part number is 46007-3NA0A, continue with reprogramming.
  - Select **Save**, and then go to Step 15.
- If the **BRAKE** part number is not 46007-3NA0A, this bulletin does not apply or it has already been done. Close C-III plus (select **Home**, and then the "X") and the CONSULT PC, disconnect from the vehicle.

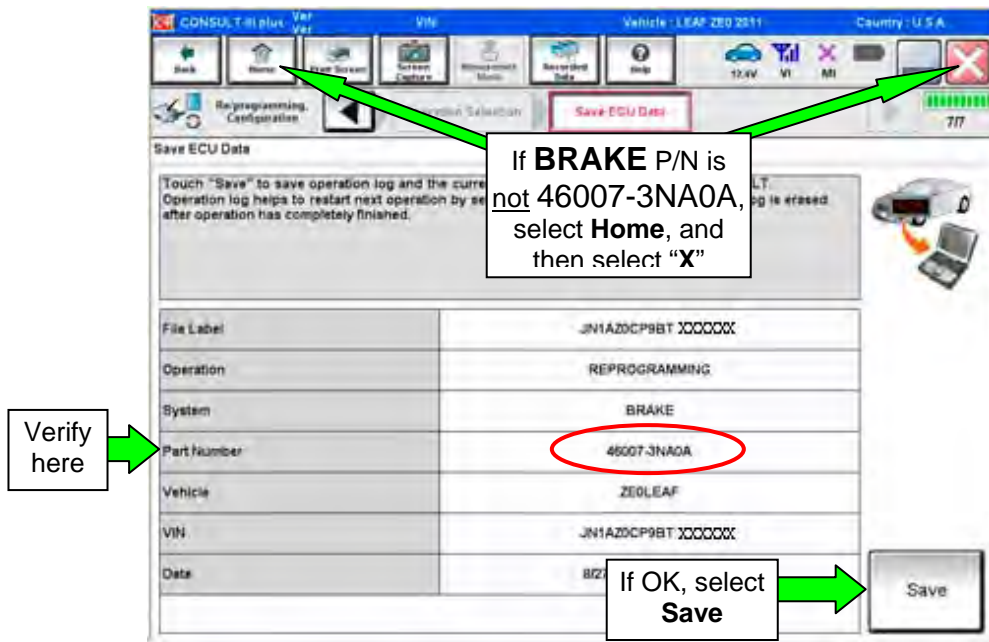


Figure 8

15. Select **Next**.

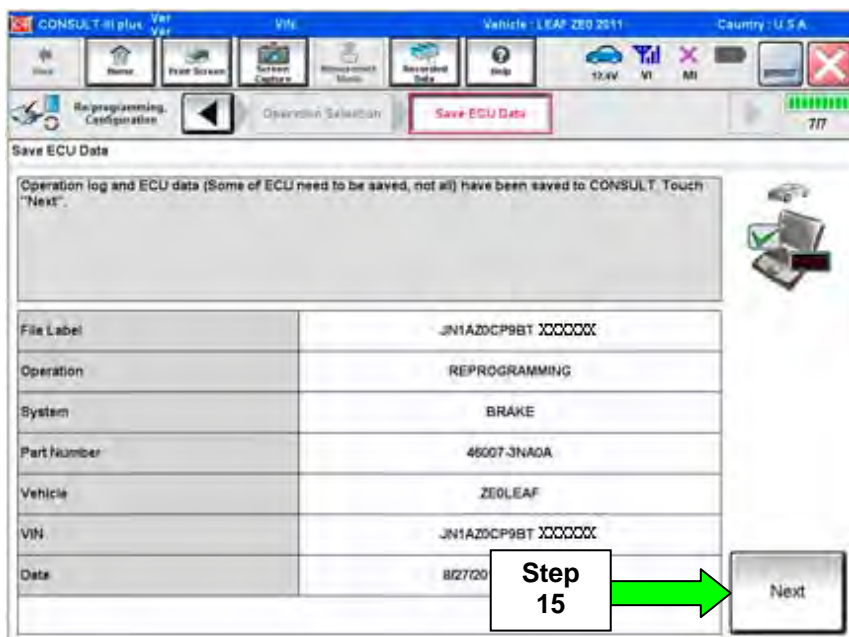


Figure 9

16. Read the precautions on page 1, and then select page 2 (page 2 not shown) with arrow. After reading page 2, select **Confirmed instructions**, and then select **Next**.

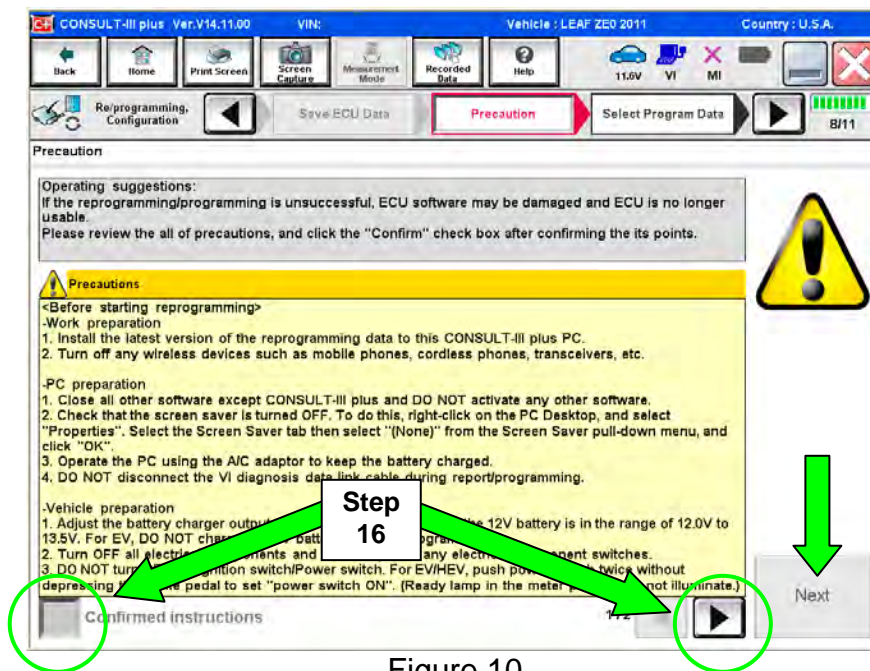


Figure 10

**NOTE:** In some cases, more than one new P/N for reprogramming is available.

- In this case, the screen in Figure 11 will display.
- Select and use the reprogramming option that **does not** have the message "Caution! Use ONLY with NTBXX-XXX".
- If you get this screen and it is blank (no reprogramming listed), it may mean that there is no reprogramming available for this vehicle, this bulletin does not apply or it has already been done.

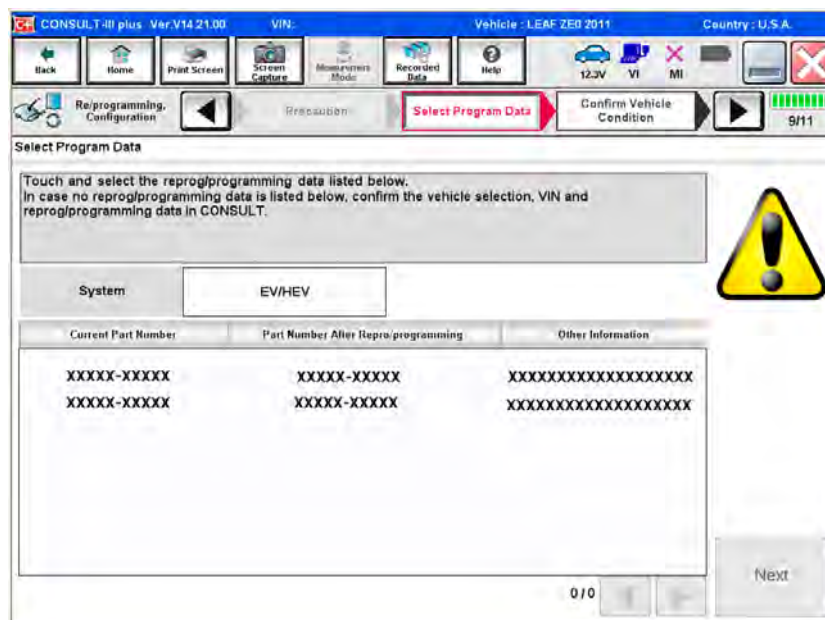


Figure 11



17. Verify "Current" and "After Reprogramming" part numbers are listed, then select **Next**.

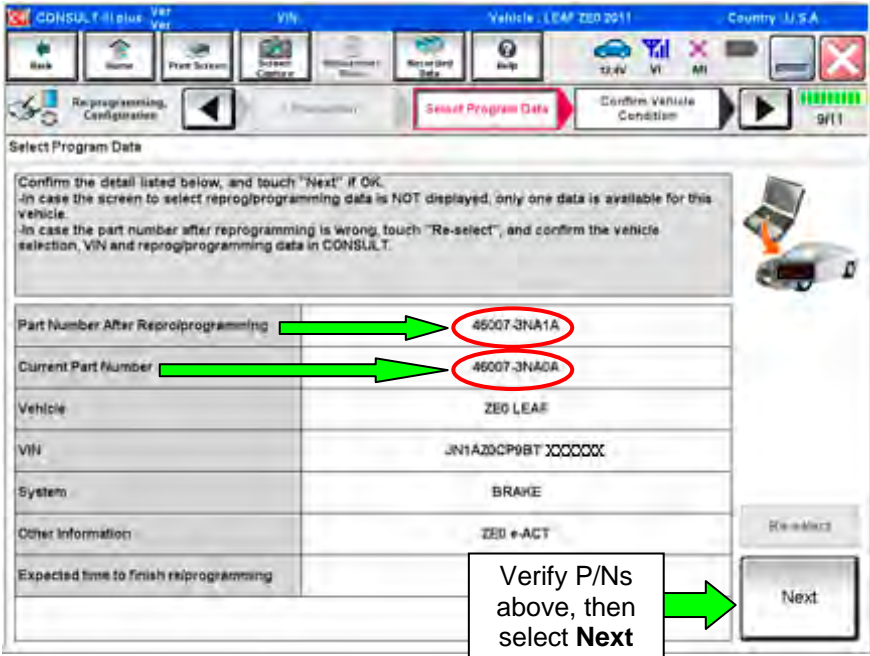


Figure 12

18. If this screen appears, select Other Operation.

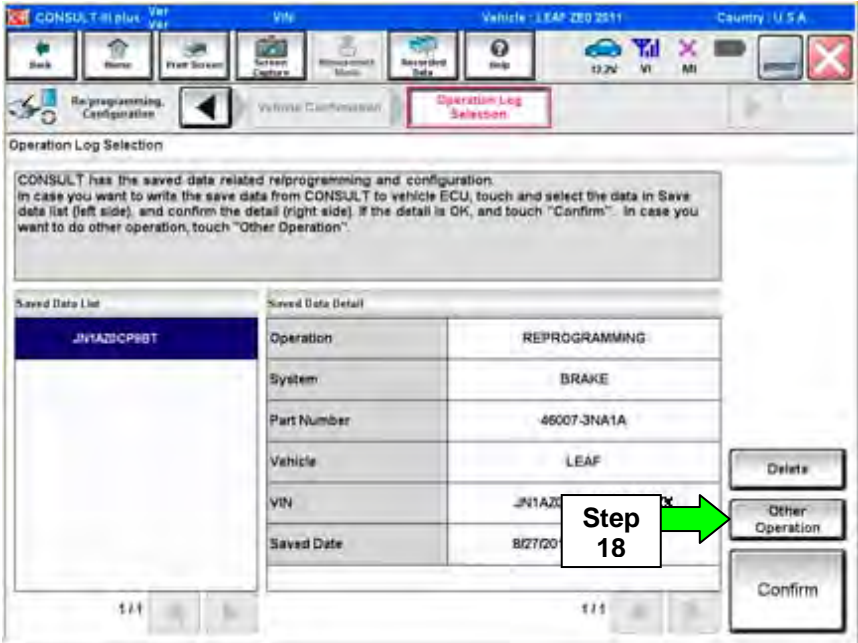


Figure 13

19. Open the hood, and then set up the GR8 Multitasking Battery Diagnostic Station (battery tester/charger) for the 12V battery.

- For battery charger/tester setup, refer to Page 20, **GR8 Multitasking Battery Diagnostic Station Setup**.

**CAUTION:** Battery voltage must stay between 12 volts and 15.5 volts.

**CAUTION:** Do not charge the High Voltage (HV) Lithium Ion battery during reprogramming.

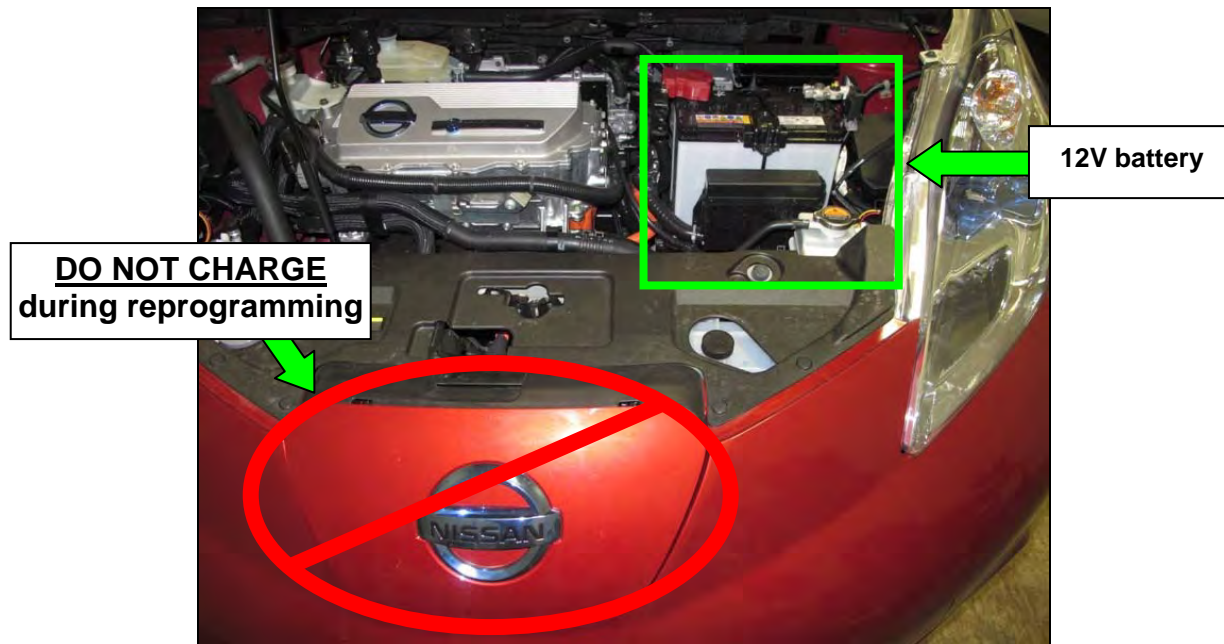


Figure 14

20. Confirm that battery voltage is correct, and then select Next.

**NOTE:** Battery voltage must stay within specified range to make the indicator turn green.

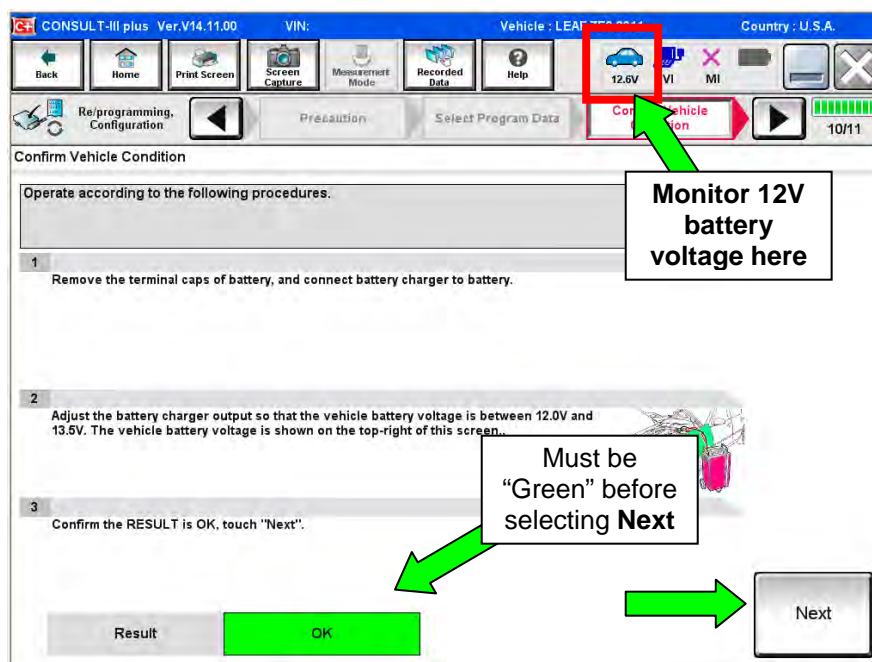


Figure 15

21. On the next screen, select **Start**.

- The reprogramming process begins when **Start** has been selected.

**NOTE:** For reprogramming to continue, vehicle 12 V battery voltage must stay within 12 volts and 13.5 volts. Make sure the voltage level is sufficient.

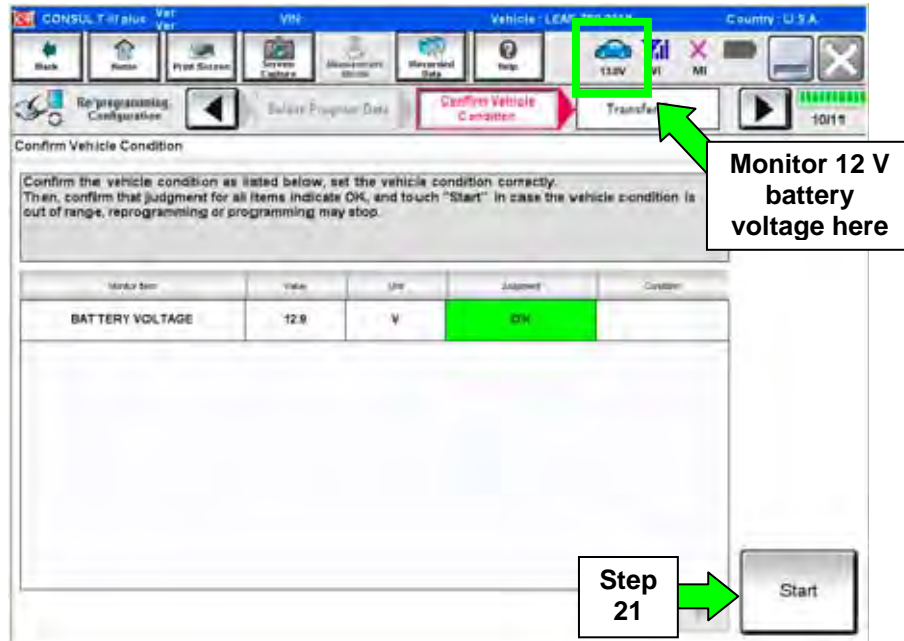


Figure 16

22. Wait for both bar graphs to complete.

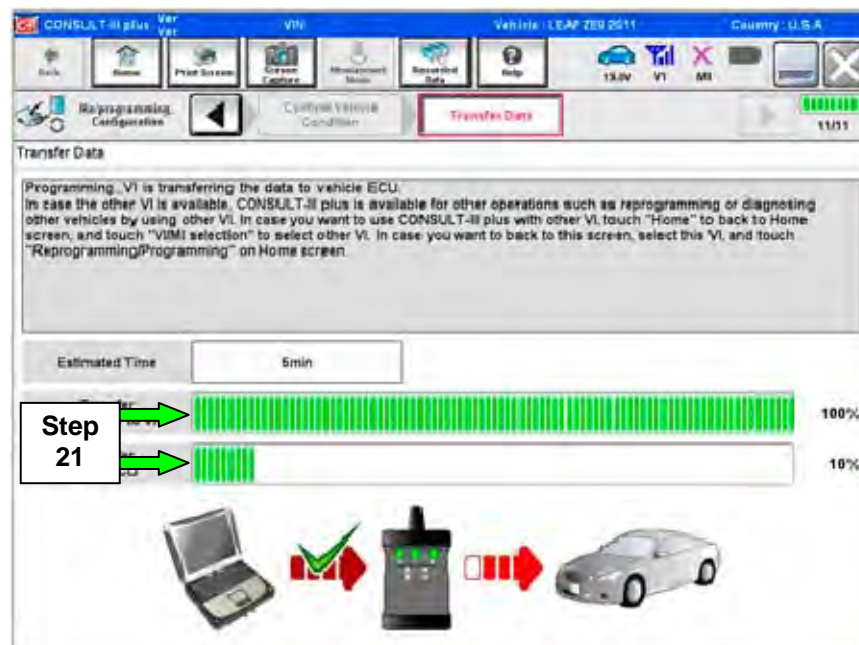


Figure 17

23. When the screen in Figure 18 appears, reprogramming is complete.

- a. Select **Next**.
- b. Wait for System Call to complete.

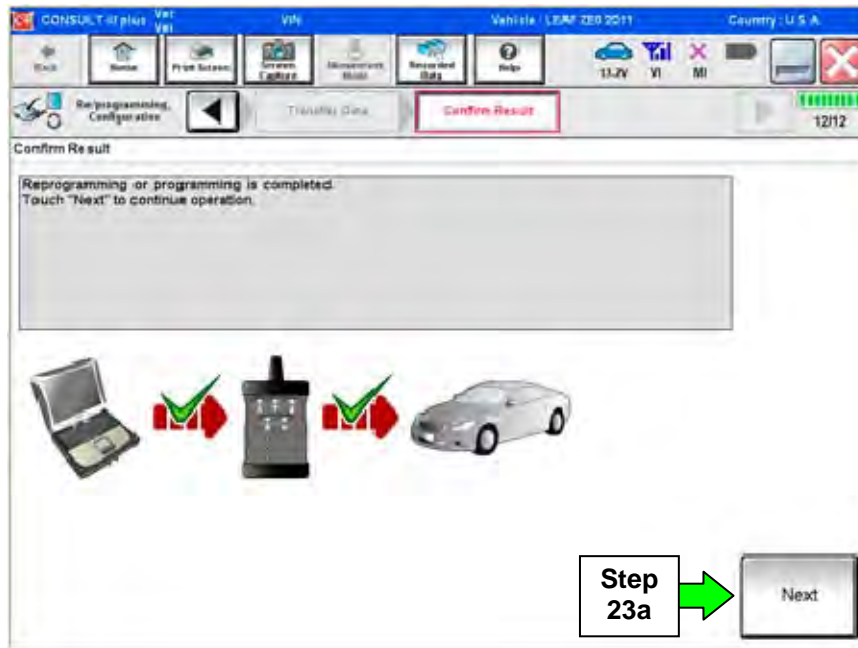


Figure 18

24. Erase all DTCs:

- a. Turn "ignition" off by depressing the power switch once.
  - The screen in Figure 19 will read **OFF** after pressing the power switch once.

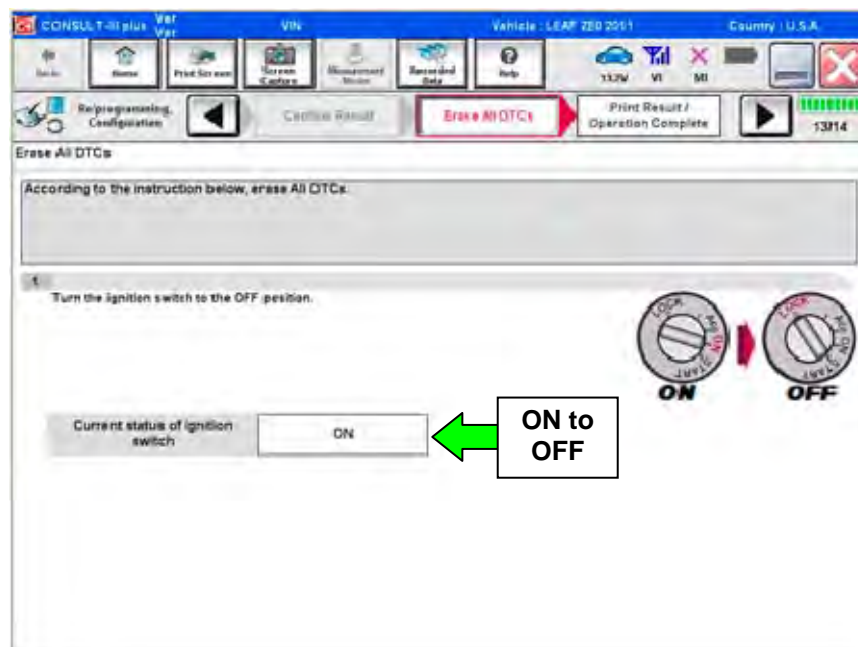


Figure 19

- b. Turn “ignition” on by depressing the power switch twice.
- Do not step on the brake pedal when depressing the power switch.
  - The screen in Figure 20 will read **ON** after pressing the power switch twice.

**NOTE:** Do not be confused by any screen messages. At this point, simply turn the “ignition” on.

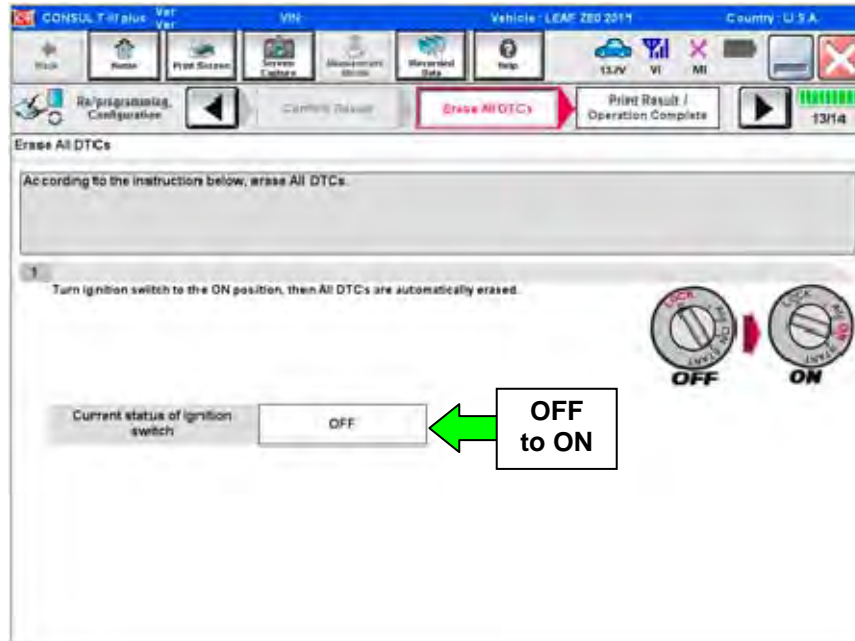


Figure 20

- c. Wait for the bar graph in the **ERASE** window to complete 100%.

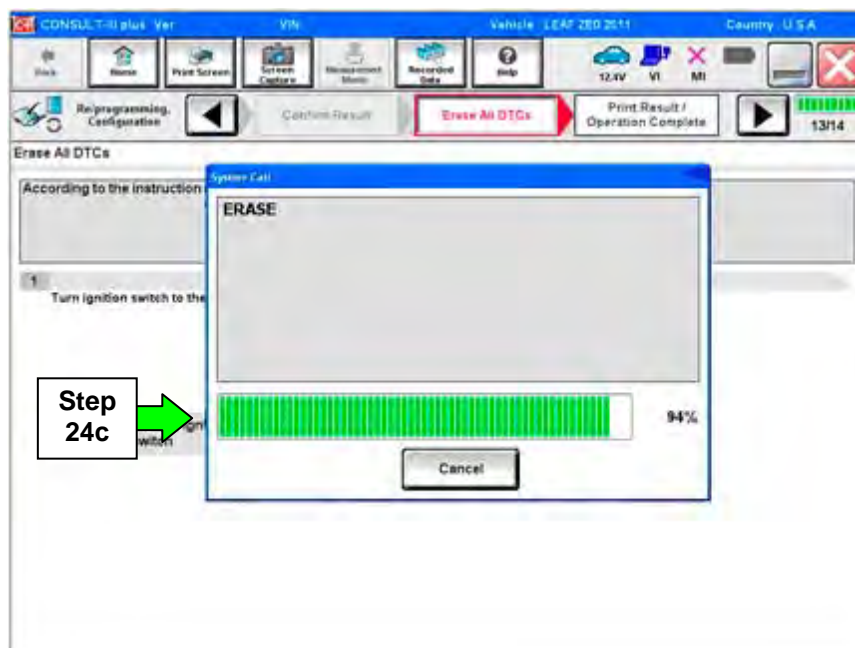


Figure 21

25. Verify the part number has changed.

a. Print a copy by selecting **Print**.

**NOTE:** Before and after part numbers on your print-out may be switched compared to your CONSULT PC screen. This is ok.

b. Attach the copy to the repair order.

c. Once a copy has been printed, select **Confirm**.

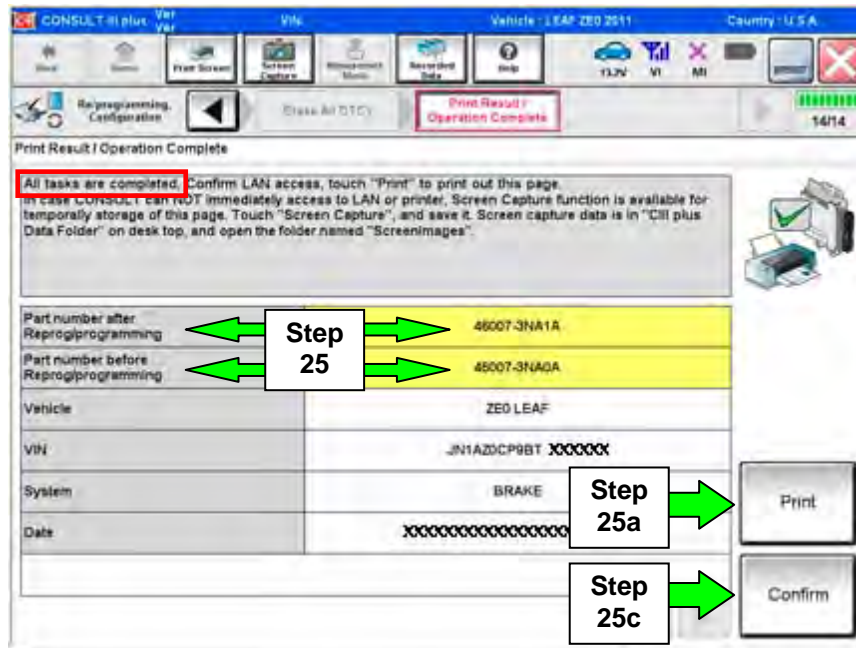


Figure 22

26. Once reprogramming has completed:

a. Select **Home**.

b. Turn "ignition" off (depress power switch once).

➤ Do not close C-III plus at this time.

c. Disconnect the battery tester/charger from the 12 V battery.

➤ For battery tester/charger disconnect procedure, go to Page 20 **GR8 Multitasking Battery Diagnostic Station, Step 14.**

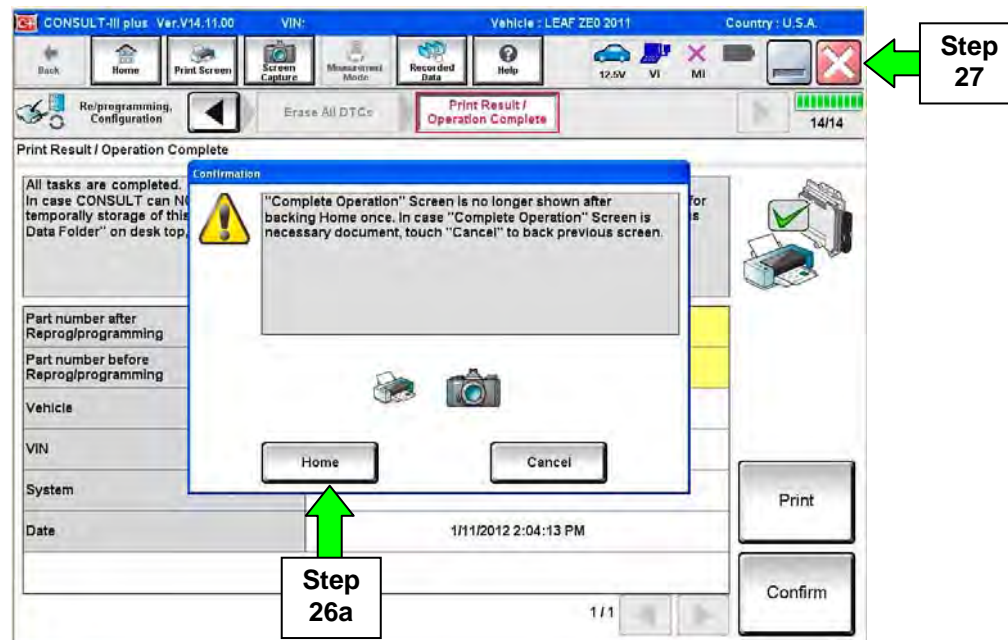


Figure 23

27. Close C-III plus (see previous page, Figure 23).

- Do not turn off the CONSULT PC.

28. Place the vehicle in “READY to drive” mode:

- Apply the parking brake.
- Depress the brake pedal.
- Depress the power switch once.
- The meter and gauges will illuminate.

29. Open C-III plus.

30. Once the plus VI is recognized, select **Diagnosis (All Systems)**.

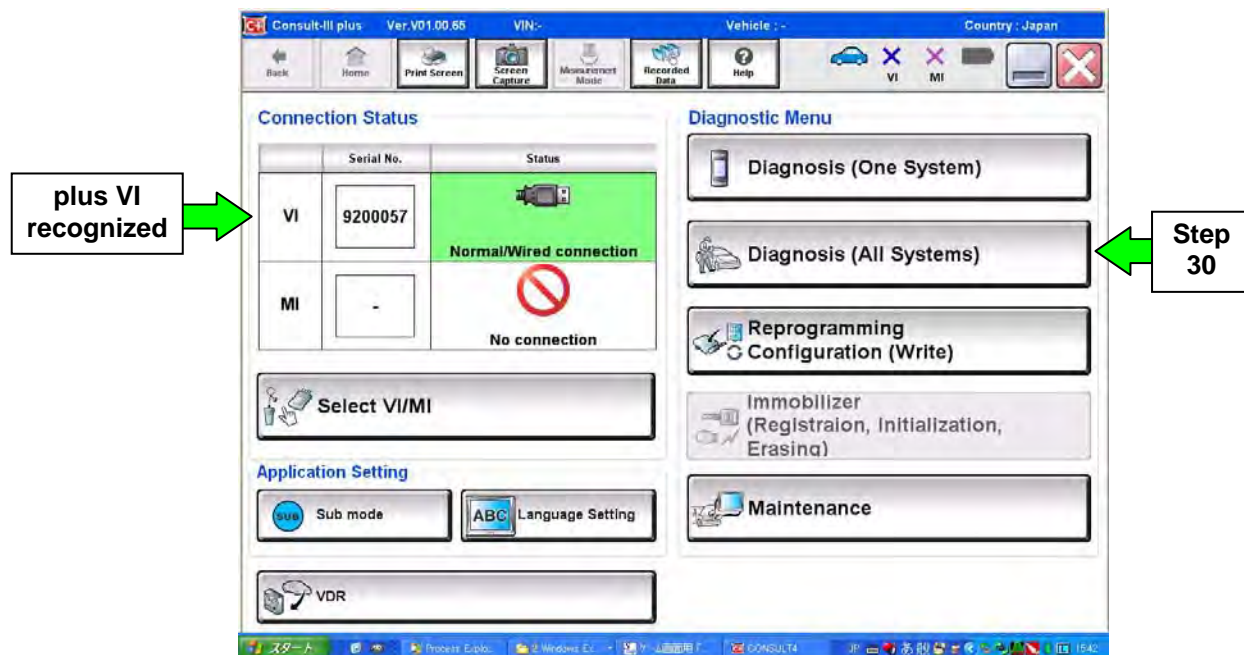


Figure 24

31. Select **LEAF** and **2011/2012** or **Automatic Selection (VIN)**.

- If **Automatic Selection (VIN)** is selected, wait for the **Reading VIN** screen to complete.

32. Select **Select** or **Detect Vehicle**, whichever displays.

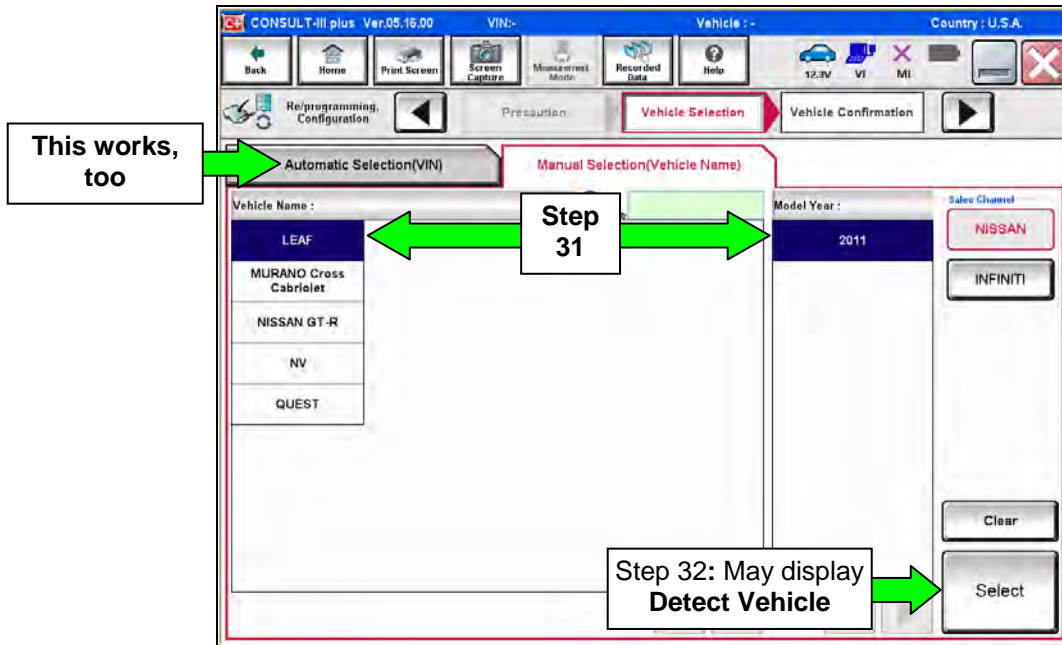


Figure 25

33. Verify the VIN in **VIN or Chassis #** matches that of the vehicle's.

- If the correct VIN exists, select **Confirm**.

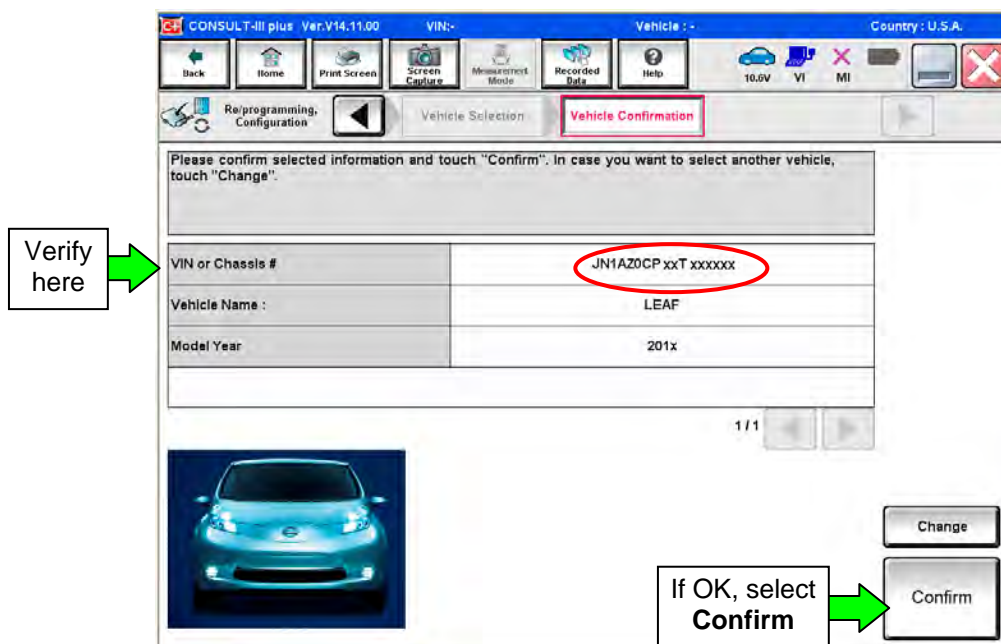


Figure 26



34. Wait for system call to complete.

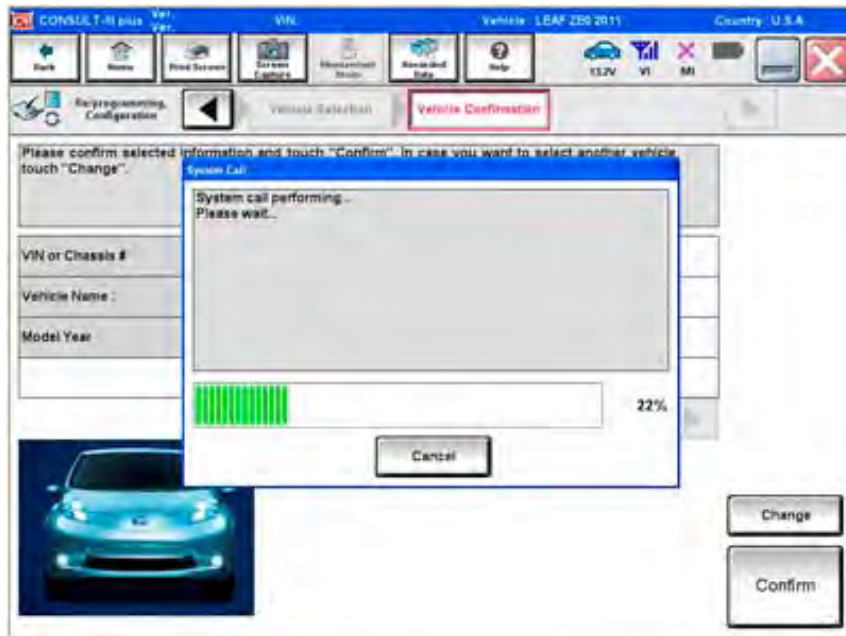


Figure 27

35. To clear any remaining DTC's (as shown in Figure 28):

- a. Turn "ignition" off (depress power switch once).
- b. Close CIII plus application.
- c. **Wait for 5 minutes.**

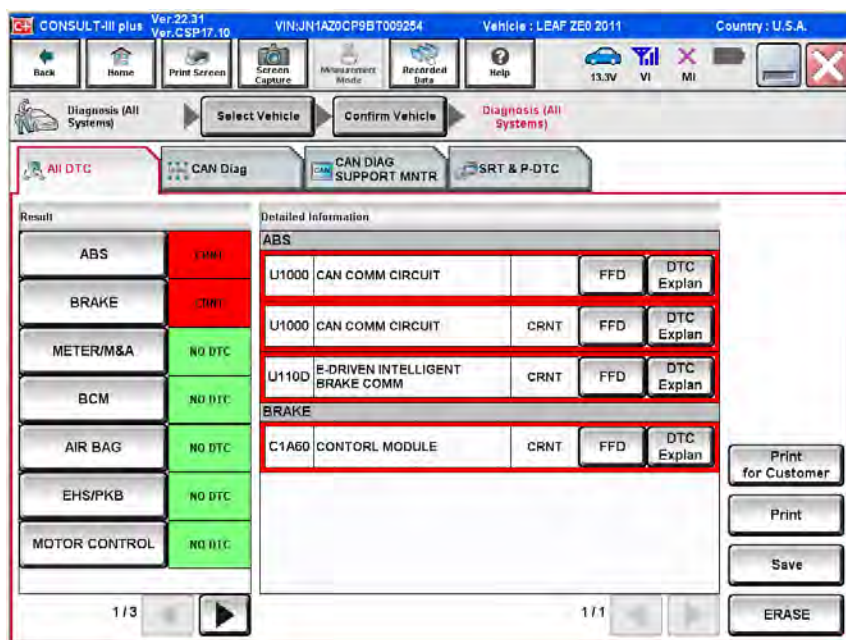


Figure 28

36. After 5 minutes, check DTC status by again performing steps 28 through 34. Once done proceed to step 37.

- Figure 29 should now be displayed with C1A60 as a PAST DTC.

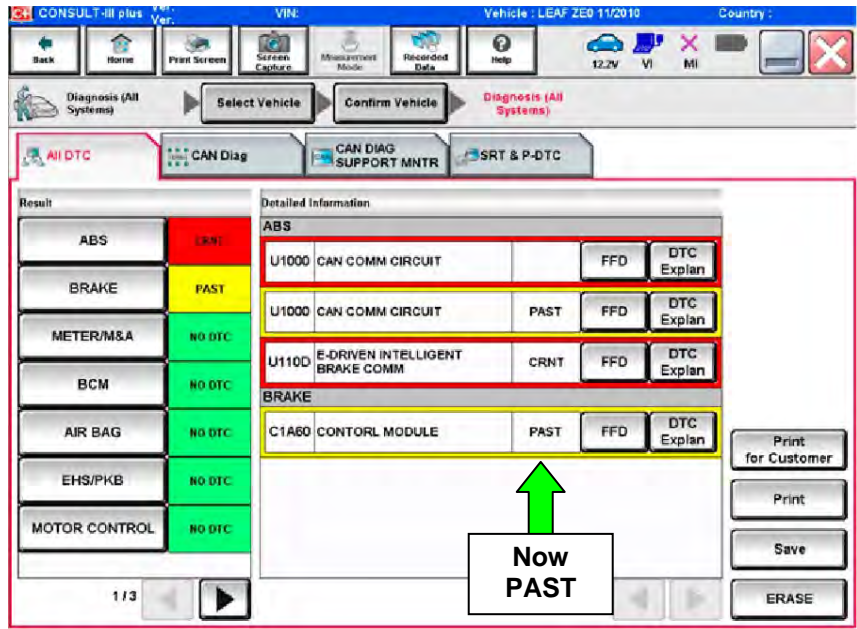


Figure 29

37. Turn "ignition" OFF again (depress power switch once), and wait 15 seconds; then turn ignition to "READY to drive" mode.

- Figure 30 should now be displayed with U110D as a past DTC.

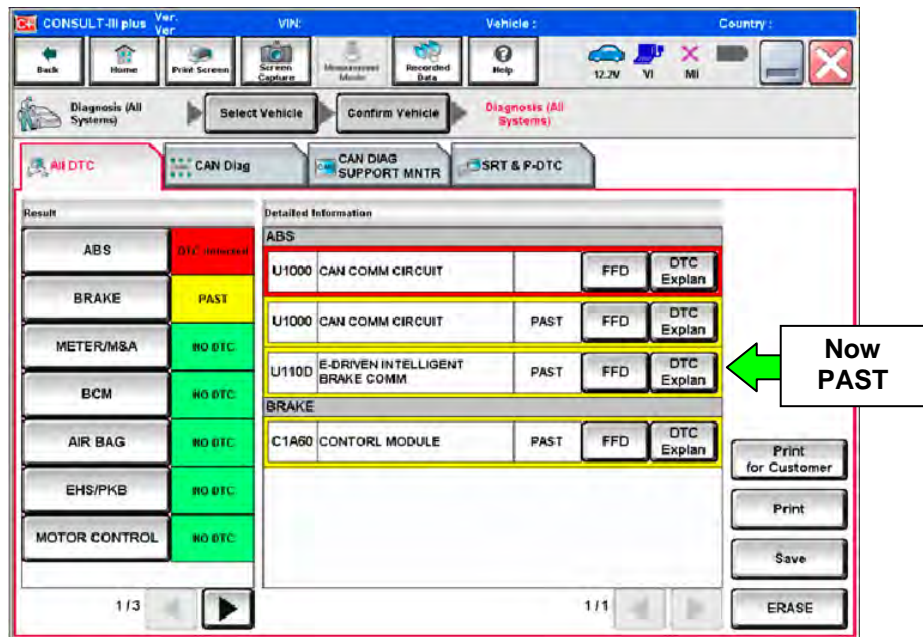


Figure 30

38 Select **ERASE** button.

- All DTC's should now be clear.

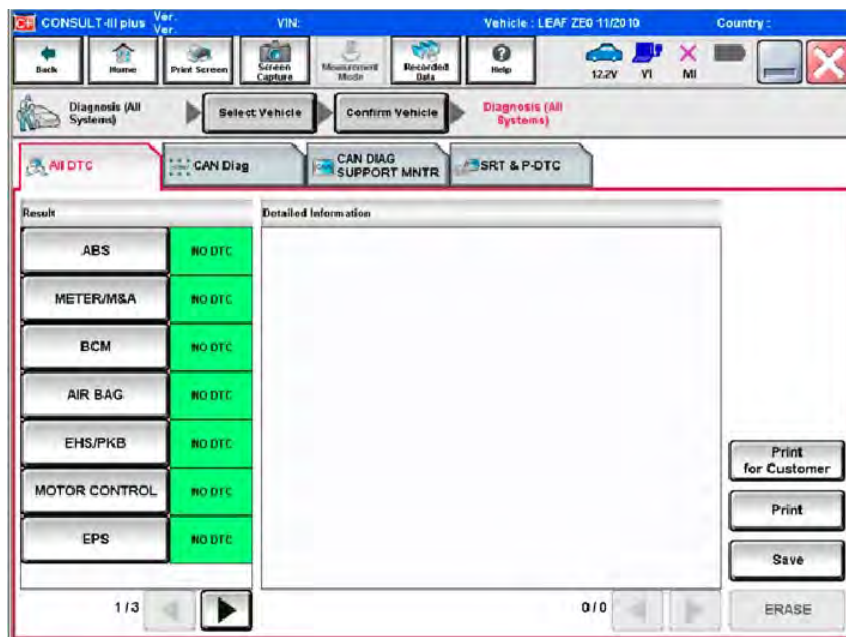


Figure 31

39. Once all DTCs have been erased:

- Select **Home**, and then on the next screen, select **Yes** (picture not shown).
- Close C-III plus, turn off the CONSULT PC, and then disconnect the CONSULT PC and plus VI from the vehicle.
- Turn “ignition” off (depress power switch once).

40. Verify the repair is complete:

- Place the vehicle in the “READY to drive” mode (press power switch while stepping on the brake pedal).
- Verify no error messages are displayed in the meter and gauges or center multi-function control panel.
- If the timer for either charging or climate control was on prior to reprogramming, turn them back on.

## GR8 Multitasking Battery Diagnostic Station Setup

1. Connect the battery tester/charger to the 12 V battery, positive cable first.
2. Plug in the battery tester/charger (AC voltage supply), and then turn on the battery tester/charger.
3. Select the preferred language, and then depress NEXT.
4. Select the USER, and then depress NEXT.
5. Confirm the USER, and then depress NEXT.
6. Select System Test, and then depress the “down” arrow.
7. Select the Manual icon, and then depress NEXT.
8. Select REGULAR FLOODED, and then depress NEXT.
9. Select LIMIT VOLTAGE, and then depress NEXT.
10. Set MIN VOLTAGE to 12.40 volts, and then depress NEXT.
  - Use the arrows to raise and lower the voltage setting.
11. Set the charging time for 40 minutes, and then depress NEXT.
12. Wait for the system to go through Test mode and Advanced Test mode.
13. Perform VCM reprogramming now.
14. Once VCM reprogramming has completed: Depress STOP, depress the power switch to OFF, and then unplug the battery tester charger from the AC voltage supply.

**NOTE:** For further details on battery tester/charger connection and set-up, refer to the battery tester/charger’s instruction manual.

---