 HYUNDAI NEW THINKING. NEW POSSIBILITIES. Technical Service Bulletin	GROUP	NUMBER
	CAMPAIGN	12-01-022
	DATE	MODEL
	AUGUST 2012	SONATA (YF 2.4L GDI)
SUBJECT CRANKSHAFT PULLEY BOLT INSPECTION (SERVICE CAMPAIGN TL3)		

Description: This bulletin provides a procedure for confirming the crankshaft pulley bolt torque.

*** IMPORTANT**

***** Dealer Stock *****

Dealers must perform this Service Campaign on all affected vehicles prior to customer retail delivery.

When a vehicle arrives at the Service Department, access Hyundai Motor America's "Warranty Vehicle Information" screen via WEBDCS to identify open Campaigns.

Applicable Vehicles: 2013 MY Sonata (YF) vehicles equipped with 2.4L GDI engine

- Produced between 7/30/2012 through 8/3/2012

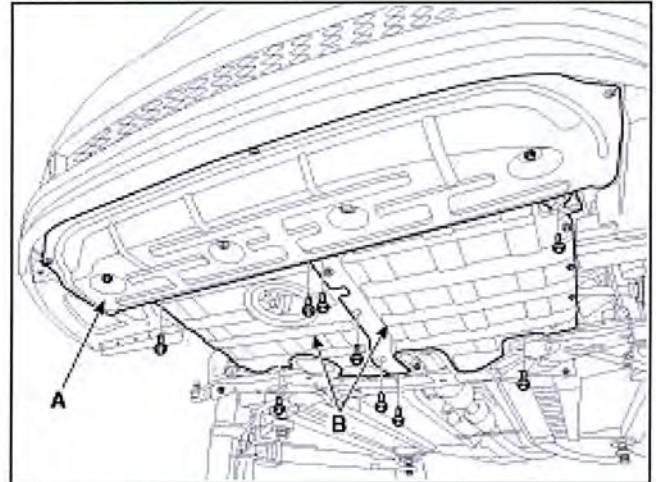
Warranty Information:

Op Code	Operation	Op Time
20CA04R0	Crankshaft Pulley Bolt Inspection	0.6 M/H

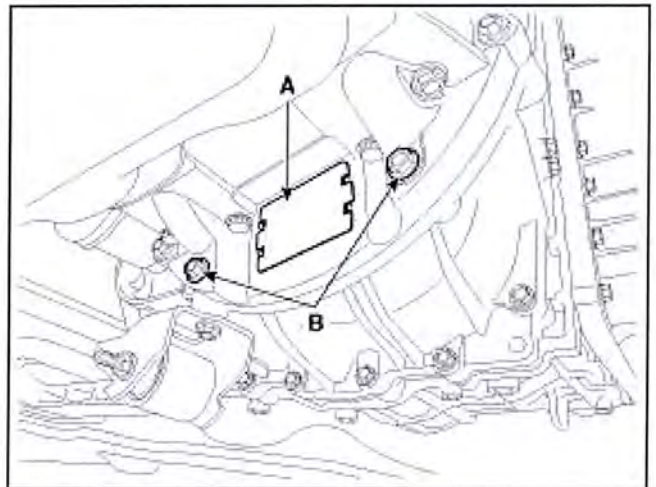
NOTE: Submit claim on Campaign Claim Entry Screen

SERVICE PROCEDURE

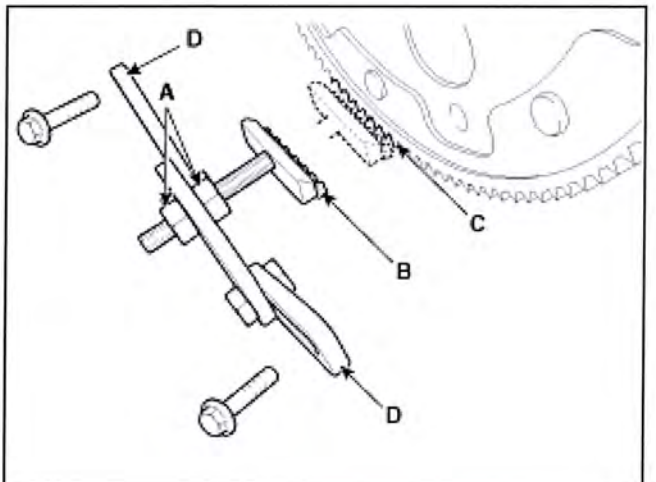
1. Turn the steering wheel to the full clockwise position.
2. Lift up the vehicle and remove:
 - Under cover (A)
 - Right side cover (B)



3. Remove the dust cover (A) on the bottom of the ladder frame and unfasten the two transaxle mounting bolts (B).

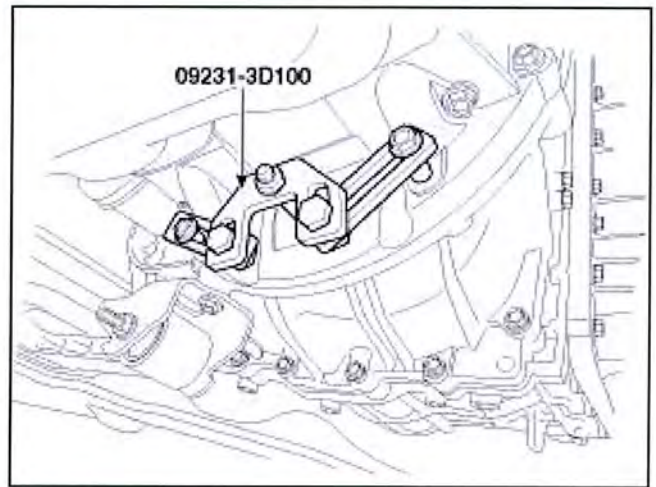


4. Position the SST (09231-3D100) by adjusting the length of the holder nuts (A) so that the front toothed plate of the holder (B) meshes into the ring gear (C) teeth.



5. Adjust the angle of the mounting ears (D) so that the two transaxle mounting bolts can be fastened to the original fastening holes.

6. Install the SST (09231-3D100) using the two transaxle mounting bolts and spacers.
 - Tighten the bolts and nuts of the holder and mounting ears securely.



7. Using a break-away (click type) torque wrench set at 19kgf·m (137lb-ft), tighten to confirm the bolt torque at 19kgf·m (137lb-ft).



8. Remove torque wrench and SST.
9. Install previously removed transaxle mounting bolts (B) and torque to 3.0 ~ 4.2 kgf.m (21.7 ~ 30.4 lb-ft).
10. Install dust cover (A).
11. Install right side (B) and under cover (A).

