

SB-10045819-5478

Countries: BRAZIL, MEXICO **Document ID:** IK1200808
Availability: ISIS **Revision:** 0
Major System: ENGINES **Created:** 8/24/2012
Current Language: English **Last Modified:** 8/27/2012
Other Languages: NONE **Author:** Pablo Guerrero
Viewed: 61

[Less Info](#)

Hide Details

Coding Information

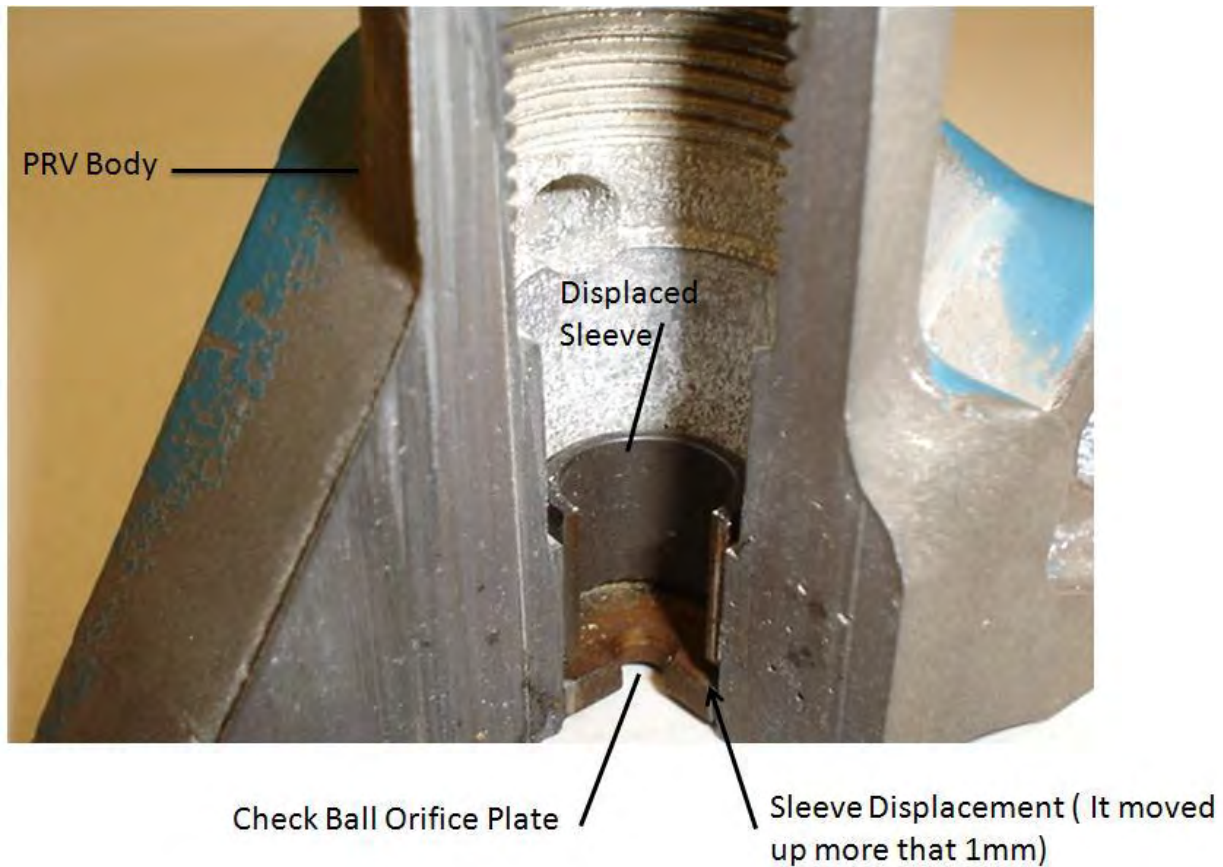
Copy Link 	Copy Relative Link 	Bookmark View My Bookmarks	Add to Favorites 	Print 	Provide Feedback 	Helpful 1	Not Helpful 0
----------------------	-------------------------------	--	-----------------------------	------------------	-----------------------------	-------------------------	-----------------------------

Title: Rexroth High Pressure Pump

Applies To: International® DT466E, DT466 Diesel Engines, 2000 through 2010 Engine Model Years (Export only) Engine Serial Numbers 470HM2U1220779 through 470HM2U1580166 International® 530E, 530, and HT530 Diesel Engines, 2000 through 2010 Engine Model Years (Export only) Engine Serial Numbers 531HM2U1220778 through 531HM2U1580166

DESCRIPTION

- The Rexroth high pressure oil pump limits oil pressure to the fuel injection system by a pressure relief valve (PRV).
- This oil pressure can also be bypassed through a ball style check valve and seat orifice when pressure becomes excessive.
- A wear sleeve in the PRV body protect the aluminum PRV body and holds the ball seat in place.
- Oil pressure spikes can displace the wear sleeve to move up (1mm) and and the return spring is not strong enough to force the sleeve back into place against the ball seat plate.
- Sleeve displacement results in oil leakage past the ball seat and can cause engine hard starting or no start conditions.
- This requires that the sleeve be removed and replaced with an over sized sleeve to increase sleeve-PRV body interference fit and to hold the ball seat plate in place.



SYMPTOMS

- Possible Hard Start No Start

PARTS INFORMATION

Part #	Description	Qty.
5010615R91	Kit Rexroth Pump Relief Valve	1

RESOLUTION

Replace the current Pressure Relief Valve (PRV) ball bearing, valve seat, and sleeve. The new sleeve is slightly larger and will fit tighter in the PRV bore to prevent displacement due to spikes in oil pressure.

TOOLS

To order this installation kit, contact your local Navistar Representative.

Intallation Intstructions-[Rexroth High Pressure Pump](#)

Rexroth Relief Valve installation kit.



 Hide Details

Feedback Information

Viewed: 60

Helpful: 1

Not Helpful: 0

No Feedback Found