



Service Bulletin

File in Section: -

Bulletin No.: PIP5031

Date: June, 2012

PRELIMINARY INFORMATION

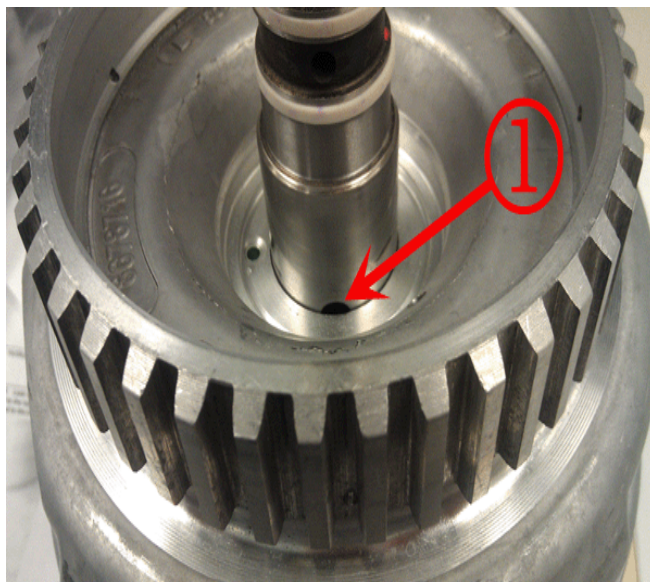
Subject: Slip Condition In 3rd Or 4th - Damaged 3-4 Clutch DTC's P0716 And P0717 May Be Set

Models: 2012 Chevrolet Colorado, Express, Silverado
2012 GMC Canyon, Savana, Sierra
Equipped with a 4L60E Automatic Transmission 4L60E (RPO M30)

The following diagnosis might be helpful if the vehicle exhibits the symptom(s) described in this PI.

Condition/Concern:

The 4L60E automatic transmission may experience a condition of slipping, late or missed shifts in 3rd and 4th gears. An internal transmission disassembly may reveal the 3-4 clutch being distressed. Upon further investigation the technician may find the turbine shaft is moving in the input housing (see picture below) allowing a loss of fluid pressure in the 3-4 clutch. The ISS teeth may move far enough out of position to cause the signal to drop out causing codes P0716 and P0717 to set.



2865982

Call out.

1) 3-4 clutch feed hole.

Note: If the 3-4 clutch feed hole (call out 1) is visible the turbine shaft is moving in the input housing and the input housing needs to be replaced.

Note: If no concerns are found with the input shaft please refer to the latest version of PIP3136.

Recommendation/Instructions:

It is recommended to install a new input housing to address this concern.

Please follow this diagnostic or repair process thoroughly and complete each step. If the condition exhibited is resolved without completing every step, the remaining steps do not need to be performed.