



# Service Bulletin

File in Section: -

Bulletin No.: PIC5704

Date: July, 2012

## PRELIMINARY INFORMATION

**Subject:** Traction And Stability Control Indicator On With Code C0131 Set After BPMV Replacement

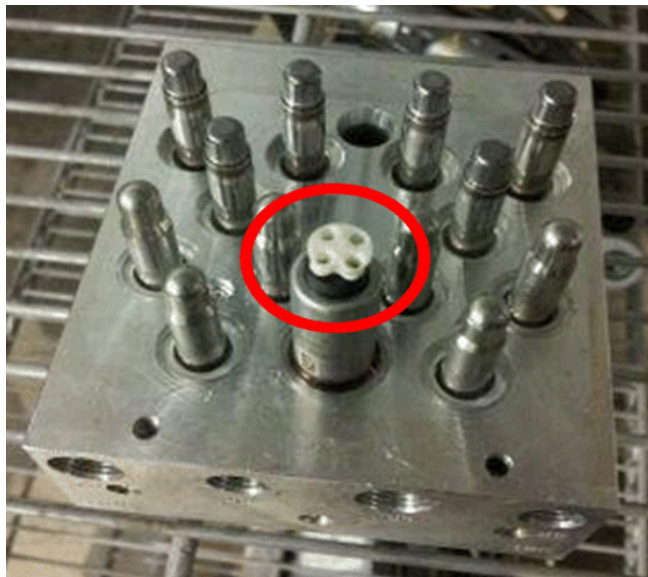
**Models:** 2012 Chevrolet Sonic

The following diagnosis might be helpful if the vehicle exhibits the symptom(s) described in this PI.

### Condition/Concern:

A technician may run into a scenario where the EBCM has been replaced and now they have code C0131 set current and there is a Traction and Stability Control on in the IPC. The technician may also notice that the brake pressure sensor voltage is 5 volts with brake pedal released or depressed.

### Recommendation/Instructions:



2885110

Technicians are advised to remove BPMV assembly and inspect the brake pressure sensor assembly and make sure all shipping material has been removed before installation. If shipping material is not removed, this will cause code C0131 to set, and or possibly damage to both the EBCM and the BPMV. Please use the above photo for reference.

Please follow this diagnostic or repair process thoroughly and complete each step. If the condition exhibited is resolved without completing every step, the remaining steps do not need to be performed.