



NUMBER: 18-018-12
GROUP: Vehicle Performance
DATE: June 08, 2012

This bulletin is supplied as technical information only and is not an authorization for repair. No part of this publication may be reproduced, stored in a retrieval system, or transmitted, in any form or by any means, electronic, mechanical, photocopying, or otherwise, without written permission of Chrysler Group LLC.

SUBJECT:

MIL Illumination For P1CEA - Boost Side EVAP Purge System Performance

OVERVIEW:

This bulletin involves inspecting the boost vacuum purge harness and if necessary replacing it.

MODELS:

2012 (FF) Fiat 500 Abarth

NOTE: This bulletin applies to vehicles equipped with a 1.4L turbo engine (sales code EAF) built before April 25, 2012 (MDH 0425XX).

SYMPTOM/CONDITION:

The customer may experience a MIL illumination with P1CEA - Boost Side EVAP Purge System Performance set active or stored.

This condition may be caused by the tee in the boost vacuum purge harness being installed backwards. If MIL is set active or stored perform the diagnostic procedure.

DIAGNOSIS:

1. Open hood.
2. Remove engine cover.
3. Shine a light on the boost vacuum purge harness tee (Fig. 1).

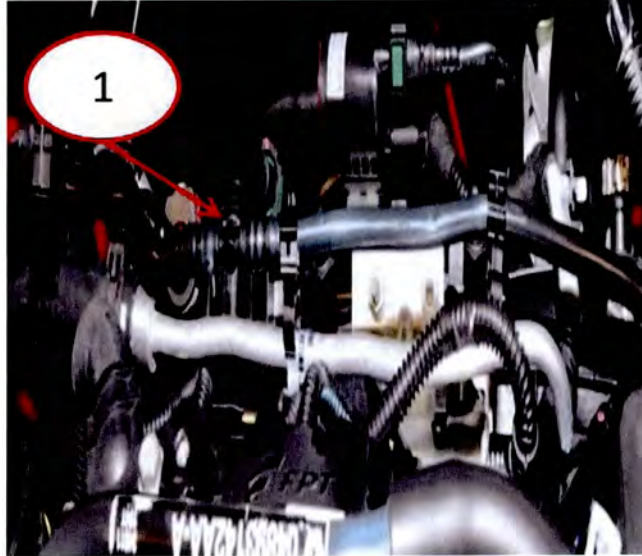


Fig. 1 Boost Vacuum Purge Harness

1 - Tee Location

4. Inspect the tee in boost vacuum purge harness (Fig. 2).

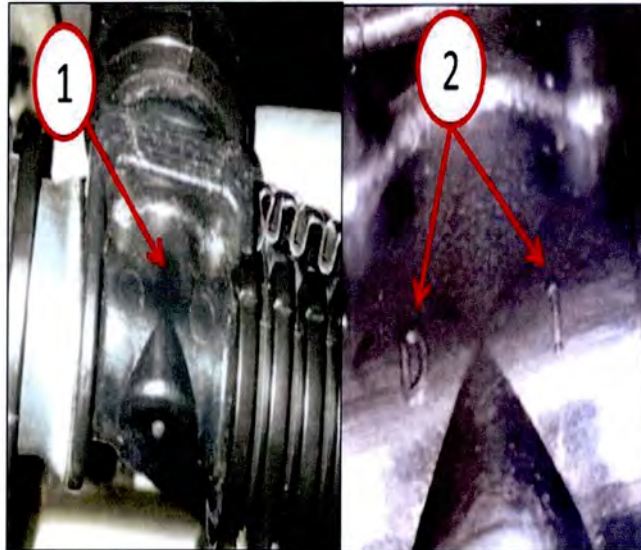


Fig. 2 Boost Vacuum Purge Harness Tee

1 - Incorrectly Installed

2 - Correctly Installed

NOTE: It may be necessary to use a magnifying glass to see markings in next step.

5. Can a **"D and 1"** be seen on the tee as you look at it from the **front of the engine**?
 - a. Yes >>> Refer to the appropriate diagnostic procedures available in DealerCONNECT/TechCONNECT to diagnose condition.
 - b. No >>> Perform the repair procedure.

PARTS REQUIRED:

Qty.	Part No.	Description
1 (AR)	04627485AC	Harness, Boost Vacuum Purge

REPAIR PROCEDURE:

1. Hoist vehicle.
2. Remove the lower splash shield.
3. Remove the clamp on the boost vacuum purge harness and disconnect.
4. Disengage the one retainer at bottom.
5. Remove the quick connect at the tee.
6. Disengage the four retainers on top.
7. Replace the boost vacuum purge harness.
8. Key "On" the ignition.
9. Using wiTECH at the home screen select PCM.
10. Using wiTECH, clear any DTC's that may have been set in all modules.

POLICY:

Reimbursable within the provisions of the warranty.

TIME ALLOWANCE:

Labor Operation No:	Description	Amount
25-01-17-97	Harness, Boost Vacuum Purge - Inspect (Skill Level = C; Training Level = 2)	0.3 Hrs.
25-01-17-98	Harness, Boost Vacuum Purge - Inspect and Replace (Skill Level = C; Training Level = 2)	0.6 Hrs.

FAILURE CODE:

ZZ	Service Action
----	----------------