



# Service Bulletin

File in Section: -

Bulletin No.: PIP5023

Date: May, 2012

## PRELIMINARY INFORMATION

**Subject:** MIL Due To DTC P0299 - Turbocharger Underboost DTC - Inspect for Turbocharger Wastegate Pivot Pin Wear

**Models:** 2011-2012 Chevrolet Cruze  
2012 Chevrolet Sonic  
With 1.4L Turbocharged Engine (RPO LUJ or LUV)

The following diagnosis might be helpful if the vehicle exhibits the symptom(s) described in this PI.

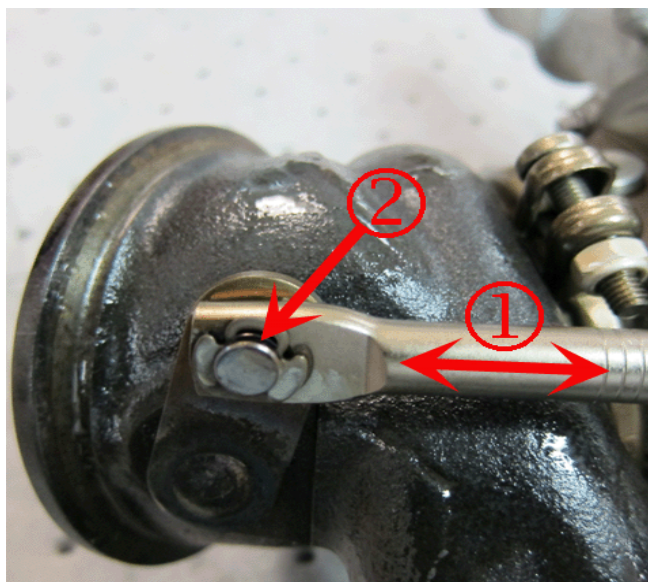
### Condition/Concern:

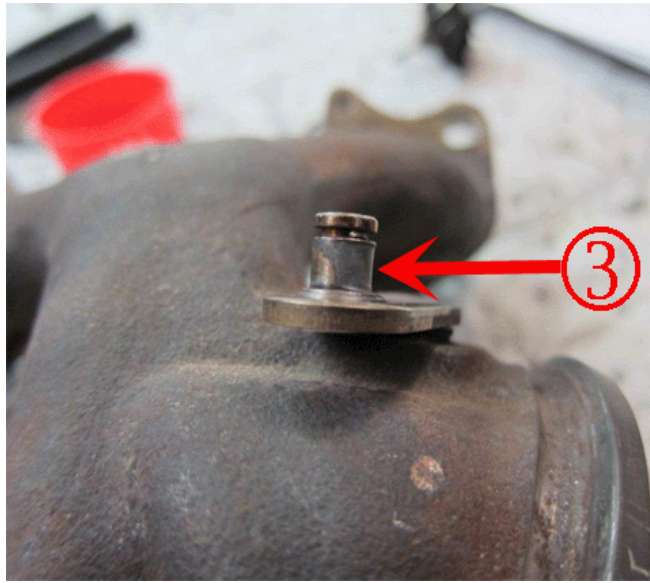
Some customer's may complain of a MIL due to DTC P0299 (Turbocharger Underboost) if the vehicle has approximately 15,000 miles or more.

This may be the result of a worn wastegate actuator pivot pin (3), allowing the wastegate to open when it should be closed.

### Recommendation/Instructions:

If a P0299 DTC is stored, perform SI diagnosis and repair as necessary. If SI diagnosis does not isolate the cause of this concern, move the wastegate linkage (1) and wastegate actuator pivot pin (2) in opposite directions while measuring the clearance between the two points. Generally, the clearance should be approximately .3-.4 mm (.012"-.016") or less. As the wastegate actuator pivot pin wears (3) and the clearance increases, the chance of setting a P0299 DTC also increases. In most cases where a P0299 DTC has set as a result of excessive clearance, it was generally around .8 mm (.032") or greater. If excessive clearance is noted, replace the turbocharger assembly and re-evaluate the concern.





2845156

Please follow this diagnostic or repair process thoroughly and complete each step. If the condition exhibited is resolved without completing every step, the remaining steps do not need to be performed.