



Date: 24.05.2012

Model: Evora '12MY from VIN CH\_10630

Number: 2012/06

Copy files should be maintained by:

Service Manager		Service Reception		Supervisor		Parts Manager	
-----------------	--	-------------------	--	------------	--	---------------	--

**TITLE:**

New 'Inteva' door latch operating system.

**REASON:**

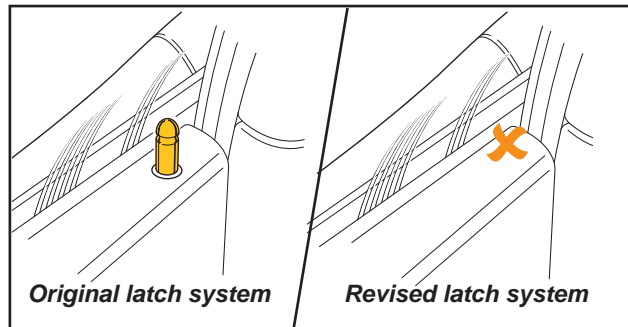
In a process of continuous product improvement and vehicle styling, a running production change to the door latching system of the 2012 model year Evora has been introduced from VIN CH\_10630.

The method of opening the doors as described in section 6 (Entry & Comfort) within the main Owner's Handbook using the exterior and interior door release handles remains unchanged.

**New Latch Features**

*Central Door Locking*

The door sill button allowing the individual locking of either the driver or passenger door is no longer fitted, but the use of the interior CDL (Central Door Locking) switch to lock both doors from the inside of the vehicle remains unchanged, as does the Dynamic (drive away) Locking feature as described in the main Owner's handbook.



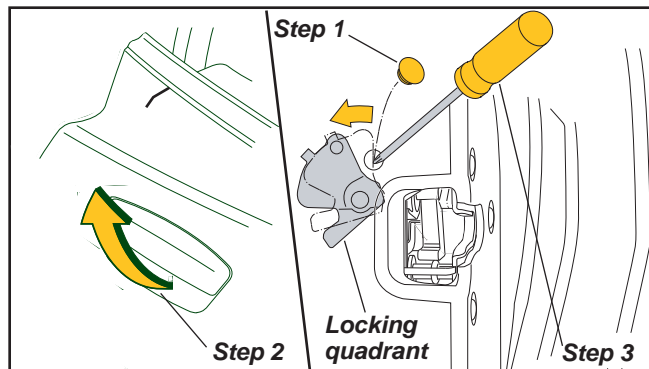
The interior door release handles are no longer disabled in the event that Dynamic Locking has been selected; simply pulling the door release handle will now automatically unlock the door.

*Mechanical Door Locking*

In the event of a discharged battery or an inoperative transmitter key it is **no** longer possible to mechanically lock the right hand door as described in the main Owner's handbook. If it is necessary to lock the right hand door under these circumstances, an emergency latch access hole is located on the right hand end of the door shell rearward of the door trim panel.

*Mechanical Door Locking Procedure*

1. With the right hand door open, carefully remove the grommet covering the emergency access hole.
2. Lift the exterior door handle upwards.
3. Using a suitable screwdriver place it approximately 10mm into the access hole.
4. With the exterior door handle still lifted, use a lateral wrist action to rotate the screwdriver so that its tip moves to the left within the door panel. An audible click should be heard as the screwdriver moves the latch locking quadrant into the locked position.



Continued.....

**LOTUS CARS LIMITED**

5. Release the exterior door handle, refit the access cover grommet and close the right hand door.
6. Confirm that the door has successfully locked by attempting to open the door using the exterior door handle (as using the Interior door handle to confirm will automatically unlock and open the door).
7. Manually lock the left hand door using the ignition key.

This information is also included within Evora supplement LSL601 which should be included within every owner's handbook pack as from '12MY VIN CH\_10603. This information will be also be included in the handbook when it is next updated.

Please ensure that any member of dealership personnel involved with a vehicle handover are also made aware of this bulletin.

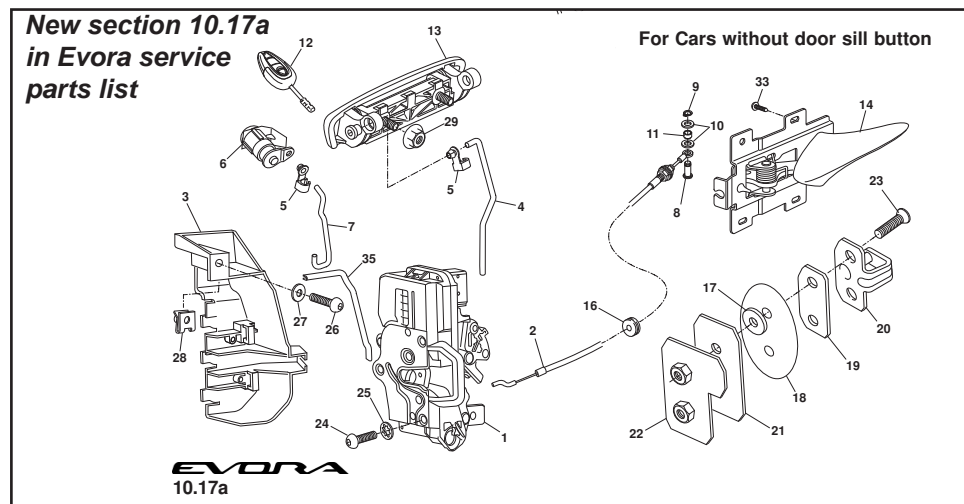
*Additional Technical Information.*

The design of the new latch system and removal of the interior door sill button means that the CDL latch lever assembly fitted to the original latch assembly is no longer required. Further technical information can be found in service notes section BV.12a

*Parts information.*

An additional function group has been added to the on-line Service Parts List (10.17a Door Latch Mechanism - Inteva). But please note that not only are there new or alternative parts numbers listed for the Inteva latch system, but various other components have also been modified to accommodate it, such as the exterior door lock lever, door shell, door curtain, panel and bodyside assembly etc.

**Note: The Inteva latch system is not backwards compatible with the original lock system and therefore cannot be fitted to any vehicle '12MY before VIN CH\_10603.**



Therefore even when ordering replacement items that are not necessarily related to the latch system, care should be taken to identify the correct parts relevant to the latch type fitted as listed within the service parts list.

Updated Service Parts Lists/Service notes are available to download from the Lotus Dealer Portal.

Ends.

**LOTUS CARS LIMITED**