



PREVOST

ENREGISTRÉ - REGISTERED
ISO 9001 & ISO 14001

MAINTENANCE INFORMATION MI12-11A



| | |
|---|------------------------------|
| DATE : MARCH 2012 | SECTION : 01 - Engine |
| SUBJECT : BOSCH T1 ALTERNATOR BELT TENSIONER REPLACEMENT - D13 US07 ENGINE | |

REVISION : A THIS MAINTENANCE INFORMATION SUPERSEDES PREVIOUS VERSION.
 Kit number was 012270 in part list. Correct kit number is 012770.

APPLICATION

| Models involved | Vehicles involved |
|---|---|
| X3-45 Coaches Model Year : 2009 - 2010 | <i>Vehicles with Volvo D13 US07 engine and 24V Bosch T1 alternators.</i> |
| XLII Motorhomes Model Year : 2009 - 2010 | <i>Vehicles with Volvo D13 US07 engine and 24V Bosch T1 alternators.</i> |
| H3-45, H3-41 Coaches Model Year : 2009- 2010 | <i>Vehicles with Volvo D13 US07 engine and 24V Bosch T1 alternators.</i> |

DESCRIPTION

An improved belt tensioner is available. This modification will prolong belt life on D13 US07 Engines.

MATERIAL

Order Kit # 012770 which includes:

| Part No. | Description | Qty |
|----------|--------------------------------|-----|
| 012719 | Support assembly | 1 |
| 510970 | Idler pulley assembly | 1 |
| 510991 | Belt tensioner | 1 |
| 557056 | Dust cap | 1 |
| 5001727 | Nut M10 | 1 |
| 5001784 | Cap screw M10-1.5 x 90mm G8.8 | 1 |
| 5001802 | Cap screw M10-1.5 x 80mm G10.9 | 1 |
| 5001884 | Cap screw M10-1.5 x110 G10.9 | 1 |
| 5061286 | Belt Poly V | 1 |

NOTE

Material can be obtained through regular channels.

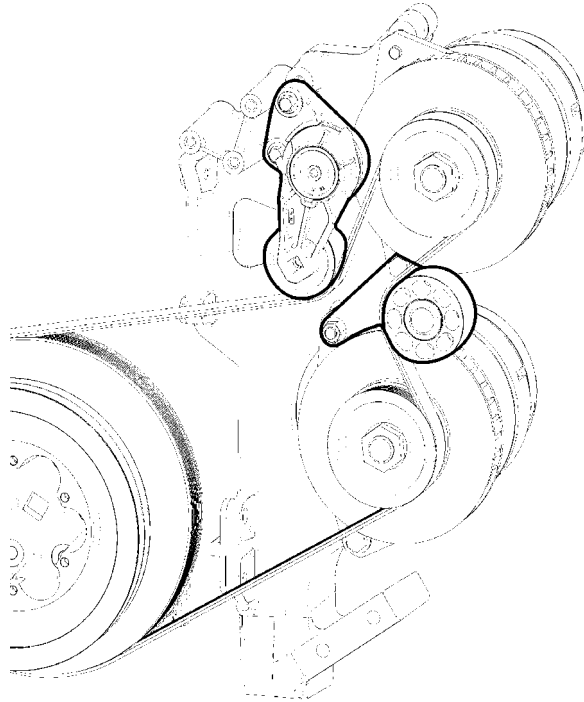
PROCEDURE



DANGER

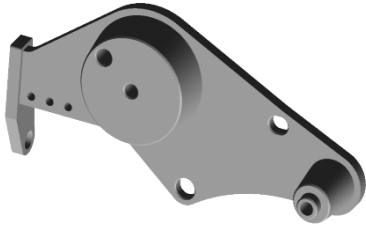
Park vehicle safely, apply parking brake, stop engine and set battery master switch(es) to the OFF position prior to working on the vehicle.

1. Relieve tension on alternator belts.
2. Remove existing tensioner and idler pulley arrangement.
3. Only keep idler pulley bracket mounting hardware.
4. Discard all other parts.



5. Replace by automatic belt tensioner asm # 012770.

6. Start by installing tensioner support.



7. In location (A), tighten support mounting hardware to 74 lb-ft.

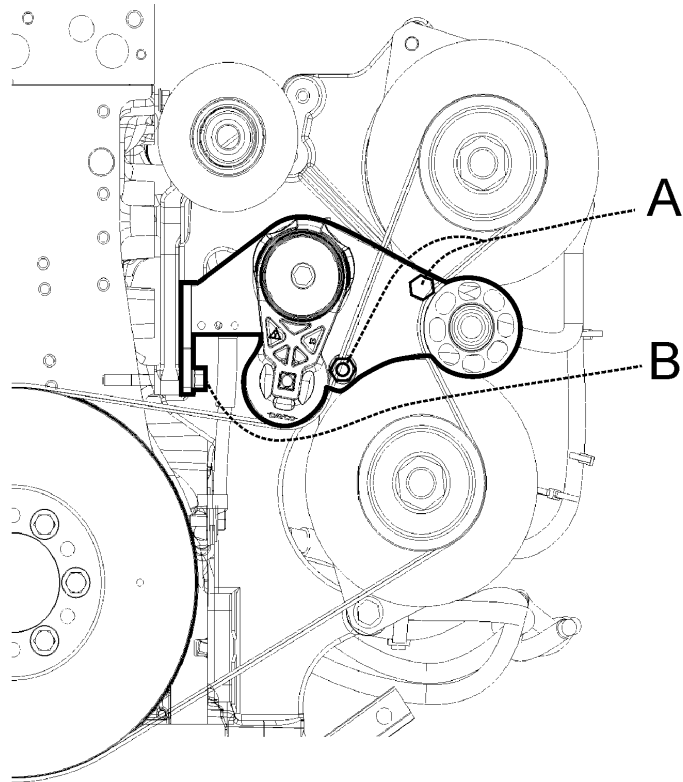
8. In location (B), make sure hole is clean and threads are free of any debris.

Then, install #5001802

M10 x 1.5 x 80mm bolt

(3 1/8 in. lg.)

Tighten bolt (B) to 43 lb-ft.



9. Next, install new tensioner and new idler pulley.

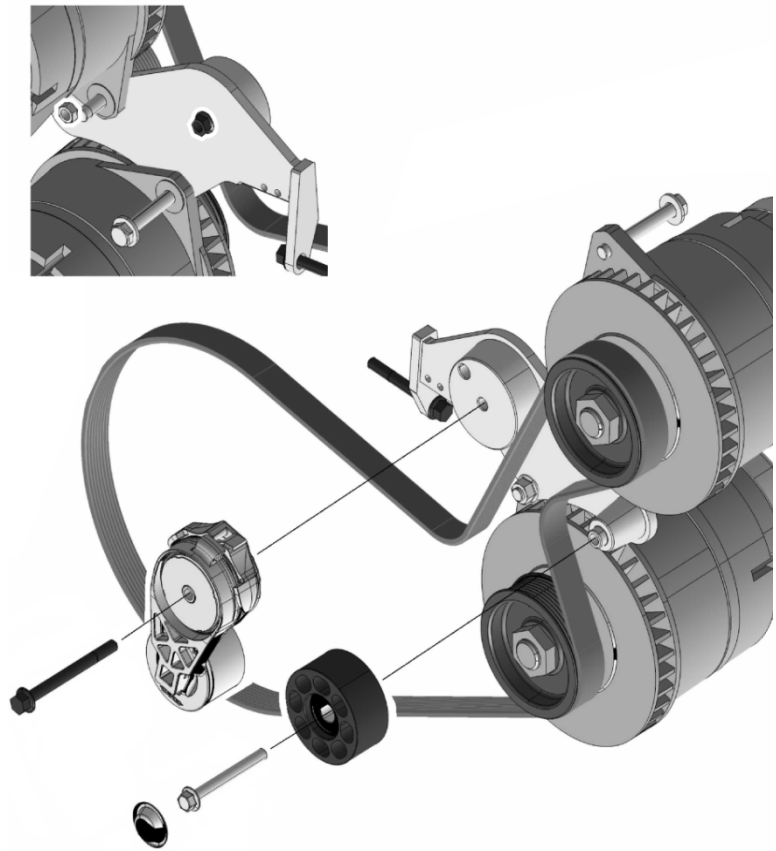
10. Install new belt provided with kit.

11. New tensioner is mounted with
M10 x110mm lg. bolt.
(4-1/4in. lg.)

12. New idler pulley is mounted with
M10 X 80mm lg. bolt.
(3 in. lg.)

13. Tighten bolts to 43 lb-ft.

14. Install protective cap.



PARTS / WASTE DISPOSAL

Discard waste according to applicable environmental regulations (Municipal/State[Prov.]/Federal)