 <b>HYUNDAI</b>   NEW THINKING. NEW POSSIBILITIES. <b>Technical Service Bulletin</b>	GROUP <b>CAMPAIGN</b>	MODEL <b>2012 ACCENT (RB)</b>
	DATE <b>APRIL 2012</b>	NUMBER <b>12-01-010-1</b>
SUBJECT <b>ECM UPDATE (SERVICE CAMPAIGN TH1)</b>		

**GDS** Global Diagnostic System **HYUNDAI** **ECU Update**

**\* NOTE**

This bulletin supersedes TSB 12-01-010. Applicability, GDS Event and ROM ID Table is updated.

**\* IMPORTANT**

Dealers must perform this Service Campaign on all affected vehicles whenever an affected vehicle is in the shop for any maintenance or repair.

When a vehicle arrives at the service department, access Hyundai Motor America's "Warranty Vehicle Information" screen via WEBDCS to identify open Campaigns.

**Description:** This bulletin provides information related to the ECM software update of some 2012MY ACCENT (RB) vehicles to revise the following ECM DTC(s) diagnostic logic:

- P0128: Coolant thermostat - Coolant Temperature Below Thermostat Regulating Temperature  
(**Note:** Vehicles that already had TH1 campaign performed before April 2012 did not include the P0128 fix at that time. Refer to TSB 12-01-002 if such vehicle needs fix for a P0128 incident occurring at this time).
- P0191: Fuel Rail Pressure Sensor Circuit Range/Performance
- P061B: Internal Control Module Torque Calculation Performance
- P0456: Evaporative Emission System-Leak detected (very small leak)
- P2188: DTC P2188 - Fuel System Too Rich - At Idle (Bank 1).

**Applicable Vehicles:**

- 2012 MY ACCENT (RB) with 1.6L GDI engine:  
(Vehicles produced from March 23 to Sept 8, 2011)

**GDS ECM Update Event# Information:**

EVENT#	DESCRIPTION
268 (or later compatible event)*	"RB 1.6 P0128 DTC LOGIC IMPROVEMENT"

(\* later event for A/T vehicle that includes additional update)

**Warranty Information:**

Model	Op Code	Operation	Op Time
RB	10C080R1	ECM UPGRADE	0.3

**NOTE: Submit claim on Campaign Claim Entry Screen.**

Circulate To: Service Manager, Warranty Manager, Service Advisors, Technicians, Fleet Repair

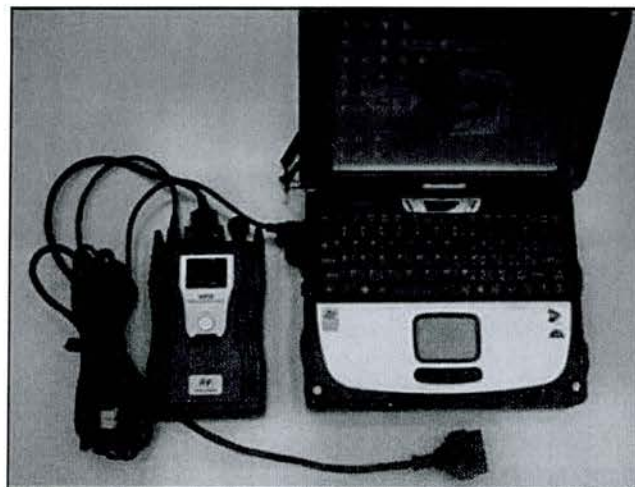
**ROM ID INFORMATION TABLE:**

Verify the ECM ROM ID before updating the vehicle's software. Refer to the table below.

Model	ECM P/N	T/M	IMMO	ROM ID	
				Previous	New
ACCENT (RB) 1.6 GDI	39110-2BAD0	M/T	NO	GGRB-ANU6ES00600 GGRB-ANU6ES01600 GGRB-ANU6ES02600 GGRB-ANU6ES03600 GGRB-ANU6ES04600 GGRB-ANU6ES0060A GGRB-ANU6ES016A0	GGRB-ANU6ES026A0
	39110-2BAD5	A/T	NO	GGRB-ANU6PS00C00 GGRB-ANU6PS01C00 GGRB-ANU6PS02C00 GGRB-ANU6PS03C00 GGRB-ANU6PS04C00 GGRB-ANU6PS00C0A GGRB-ANU6PS01CA0	GGRB-ANU6PS02CA0

**GENERAL PRECAUTIONS:**

- Connect the USB cable between the GDS and the VCI.
- Connect the 16-pin DLC connector from the VCI into the DLC located under the driver's side dash.



**\* NOTE**

Make sure the battery icon at the bottom right of the GDS laptop shows at least 50%; if not, charge the GDS or attach a battery charger.

- Turn off all lights (Do not leave the headlight switch in auto mode) and all accessories (including heater/air conditioner/fan, audio, heated seats, rear defroster, etc) to ensure the battery will not be discharged during the update.
- Perform the update with the ignition key in the ON position.

## ECM UPDATE (SERVICE CAMPAIGN TH1)

- Do not disconnect any cables connected to the vehicle or the GDS during the update.
- Do not start the engine or turn the ignition switch OFF during the update.

### \* NOTE

Confirm your GDS has the most recent version. If not, connect the GDS to an Internet port, open the GDS home page and select "Update". Refer to instructions on [hmaservice.com](http://hmaservice.com) if necessary.

### \* NOTE

If you encounter GDS related problems, call the GIT Helpline at 888-437-0308.

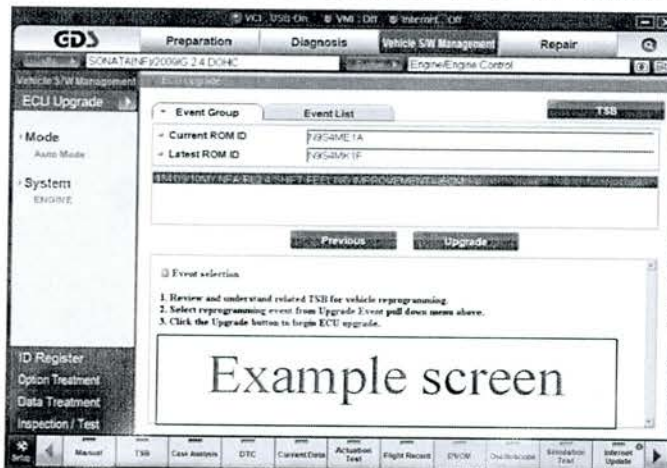
## SERVICE PROCEDURE:

### GDS AUTO MODE ECM UPDATE PROCEDURE

1. From the GDS home page, select **ECU Upgrade**. If necessary, select the VIN.
2. Select **Engine** as the system and then select **OK**.
3. Select **Auto Mode** and then select **Next**.
4. From the **System** tab, select **Engine** and then select **OK**. The GDS will read the ROM ID. Confirm the ROM is applicable as shown on Page 1, "ROM ID Information".



5. Select update event as listed on the **GDS Event List** of page-1. Select **Upgrade**.



6. If the screen indicates "**Voltage is OK**" (voltage > 12volts), select **OK**. If not, select **CANCEL** and charge the vehicle battery by running the engine for 10 minutes.

**SUBJECT:****ECM UPDATE (SERVICE CAMPAIGN TH1)**

- 7 Updating will occur until 100% is reached on the bar graph. At the prompt, turn the ignition key OFF for 10 seconds, then turn it ON and select **OK**.
- 8 The GDS will confirm that ECM reprogramming is successfully finished. Select **OK**.
- 9 If the ECM update was not successful, go to **GDS MANUAL MODE ECM UPDATE PROCEDURE**.
- 10 Check for DTC in all systems and Erase All DTC that stored due to loss of CAN communication during the ECM Update.
- 11 Turn **OFF ignition 10 seconds** then turn **ON** before going to engine start.
- 12 Start the engine to confirm proper operation.

**GDS MANUAL MODE ECM UPDATE PROCEDURE****★ NOTE**

- **GDS Manual Mode is intended for recovery of an ECM Update should it begin but then later fail in process in the Auto Mode.**
- **The ECM connectors must be disconnected for 15 minutes to reset its contents then perform this Manual Mode Update.**
- **Do not force Manual Mode if you get an error in Auto Mode that the vehicle's current ROM ID did not apply.**
- **It is critical to identify the correct ECM Part Number in the PASSWORD table else the ECM may be permanently damaged. It is recommended to remove ECM and read it from the label if not sure which choice.**

1. From the GDS home page, select **ECU Upgrade**. If necessary, select the VIN.
2. Select **Engine** as the system and then select **OK**.
3. Select **Manual Mode** and then select Next.
4. From the **System** tab, select **Engine** and then select **OK**.
5. Select update event as per the **GDS Event List of page-1**, then select **Upgrade**.
6. Be certain to enter the exact appropriate password from the table below and select **OK**. See the **important NOTE** above.
7. The remaining steps are same as Steps 6~12 of the Auto Procedure.

MENU	PASSWORD
RB 1.6 MT -IMMO : 39110-2BAD0	1020
RB 1.6 AT -IMMO : 39110-2BAD5	1025