

 HYUNDAI NEW THINKING. NEW POSSIBILITIES. Technical Service Bulletin	GROUP	NUMBER
	CAMPAIGN	12-01-008-1
	DATE	MODEL
	MARCH 2012	ACCENT (RB)
ECM & TCM UPDATE (SERVICE CAMPAIGN TK5)		

This TSB supersedes TSB 12-01-008 and adds DTC carried over from 11-01-037 (TH1).

HYUNDAI Global Diagnostic System **ECU Update**

Description: This bulletin provides a procedure to update the ECM and TCM software for 2012 Accent 1.6L (RB) vehicles with the latest update to improve:

- Cruise control logic
- P0128: Coolant thermostat - Coolant Temperature Below Thermostat Regulating Temperature
- P0191: Fuel Rail Pressure Sensor Circuit Range/Performance
- P061B: Internal Control Module Torque Calculation Performance
- P0456: Evaporative Emission System-Leak detected (very small leak)
- P2188: DTC P2188 - Fuel System Too Rich - At Idle (Bank 1).

* IMPORTANT

***** Dealer Stock and Retail Vehicles *****

Dealers must perform this Campaign on all affected vehicles prior to customer retail delivery and whenever an affected vehicle is in the shop for any maintenance or repair.

When a vehicle arrives at the Service Department, access Hyundai Motor America's "Warranty Vehicle Information" screen via WEBDCS to identify open Campaigns.

Applicable Vehicles: 2012 MY Accent (RB) A/T with ACC (Auto Cruise Control)
Applicable Production Date Range: From June 1, 2011 through November 7, 2011

GDS Information:

Event #	Description
Event #266 (or latest Event #)	266.RB ACC LOGIC IMPROVEMENT - ECM
Event #267 (or latest Event #)	267.RB ACC LOGIC IMPROVEMENT - TCM

Warranty Information:

Model	Op Code	Operation	Op Time
Accent (RB)	20C010R0	ECM & TCM UPGRADE	0.5

NOTE: Submit claim on Campaign Claim Entry Screen

SUBJECT: ECM & TCM UPDATE (SERVICE CAMPAIGN TK5)

ECM ROM ID TABLE: Verify the ECM ROM ID before updating vehicle software.

Model	PCM Part Number	ECM ROM ID	
		Previous	New
Accent (RB) 1.6L	39110-2BAD5	GGRB-ANU6PS00C00 GGRB-ANU6PS01C00 GGRB-ANU6PS02C00 GGRB-ANU6PS03C00 GGRB-ANU6PS04C00 GGRB-ANU6PS00C0A GGRB-ANU6PS01CA0	GGRB-ANU6PS02CA0

TCM ROM ID TABLE: Verify the TCM ROM ID before updating vehicle software.

Model	TCM (PCM) Part Number	TCM ROM ID	
		Previous	New
Accent (RB) 1.6L	39110-2BAD5	TRB0Z16NA0 TRB0Z16NA1 TRB0Z16NA2 TRB0Z16N10	TRB0Z16NA3

GENERAL PRECAUTIONS

- Connect the USB cable between the GDS and the VCI.
- Connect the 16-pin DLC connector from the VCI into the DLC located under the driver's side dash.



* NOTE

Make sure the battery icon at the bottom right of the GDS laptop shows at least 50%; if not, charge the GDS or attach a battery charger.

- Turn off all lights (Do not leave the headlight switch in auto mode) and all accessories (including heater/air conditioner/fan, audio, heated seats, rear defroster, etc) to ensure the battery will not be discharged during the update.
- Perform the update with the ignition key in the ON position. (Turn the ignition key to the ON

ECM & TCM UPDATE (SERVICE CAMPAIGN TK5)

position or press the Start-Stop Button two times without depressing the brake pedal).

- Do not disconnect any cables connected to the vehicle or the GDS during the update.
- Do not start the engine or turn the ignition switch OFF during the update.

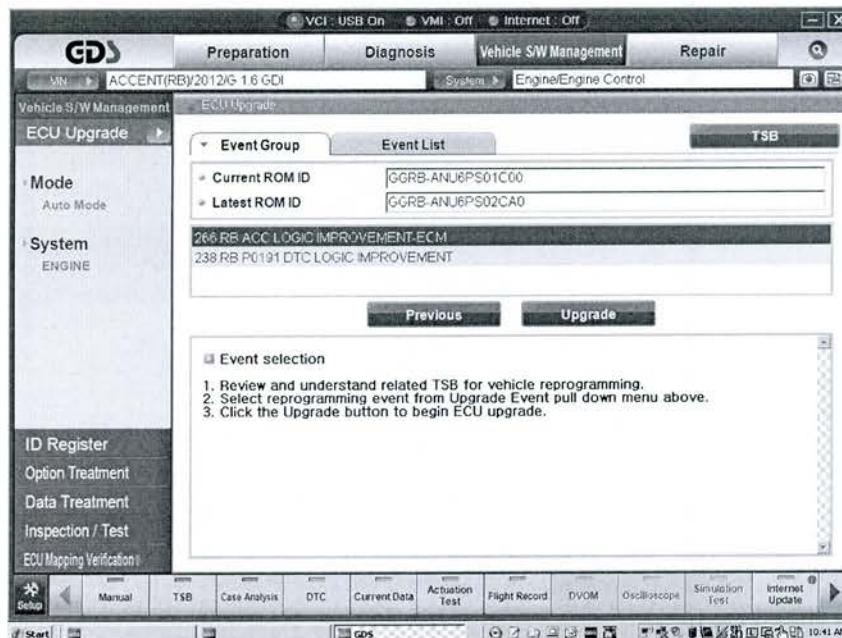
*** NOTE**

Confirm your GDS has the most recent version. If not, connect the GDS to an Internet port, open the GDS home page and select "Update".

If you encounter GDS related problems, call the GIT Helpline at 888-437-0308.

GDS AUTO MODE ECM UPDATE PROCEDURE

1. From the GDS home page, select **ECU Upgrade**. If necessary, select the VIN.
2. Select **Engine** as the system and then select **OK**.
3. Select **Auto Mode** and then select **Next**.
4. From the **System** tab, select **Engine** and then select **OK**. The GDS will read the ROM ID. Confirm the ROM is applicable as shown on Page 1, "ROM ID Information".
5. Select update event **#266 RB ACC LOGIC IMPROVEMENT - ECM** or any later (higher) event number that shows in the GDS list. Select **Upgrade**.



6. If the screen indicates "**Voltage is OK**", select **OK**. If not, select **CANCEL** and charge the vehicle battery by running the engine for 10 minutes.
7. Updating will occur until 100% is reached on the bar graph. At the prompt, turn the ignition key OFF for 10 seconds, then turn it ON and select **OK**.
8. The GDS will confirm that TCM reprogramming is successfully finished. Select **OK**.
9. If the TCM update was not successful, go to **GDS MANUAL MODE ECM UPDATE PROCEDURE**.
10. Check for any Diagnostic Trouble Codes in the **ESC, EPS and TPMS** menus and erase any DTC.

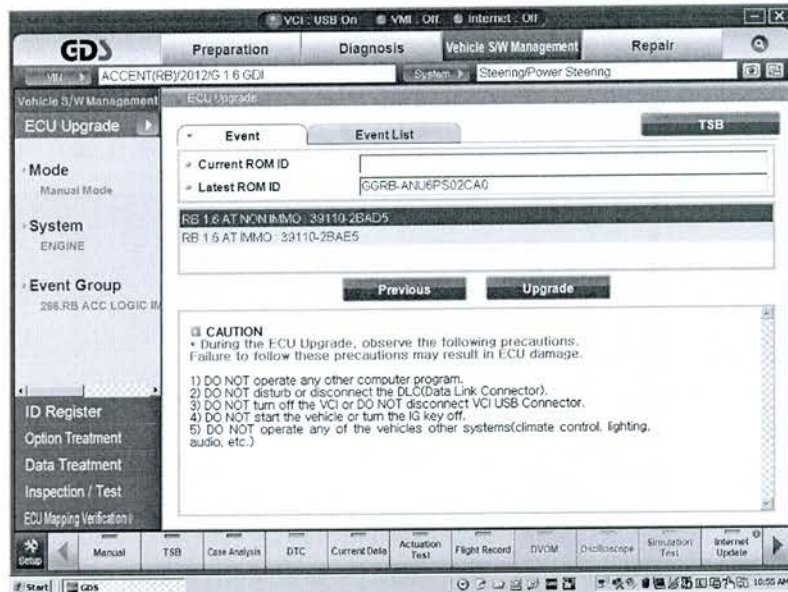
GDS MANUAL MODE ECM UPDATE PROCEDURE

★ NOTE

In the event of AUTO MODE update failure (after it initiated the progress bar):

- You must attempt MANUAL MODE. Use the TCM P/N from the vehicle's TCM label if the correct TCM P/N is not clear from the ROM ID table.
- Replacing a TCM without carefully documenting that a MANUAL MODE update attempt was made will result in a charge back of your claim.

1. From the GDS home page, select **ECU Upgrade**. If necessary, select the VIN.
2. Select **Engine** as the system and then select **OK**.
3. Select **Manual Mode** and then select **NEXT**.
4. From the **System** tab, select **Engine** and then select **NEXT**.
5. Select update event **#266 RB 1.6 NON-IMMO 39110-2BAD5** or any later (higher) event number that shows in the GDS list. Select **Next**.



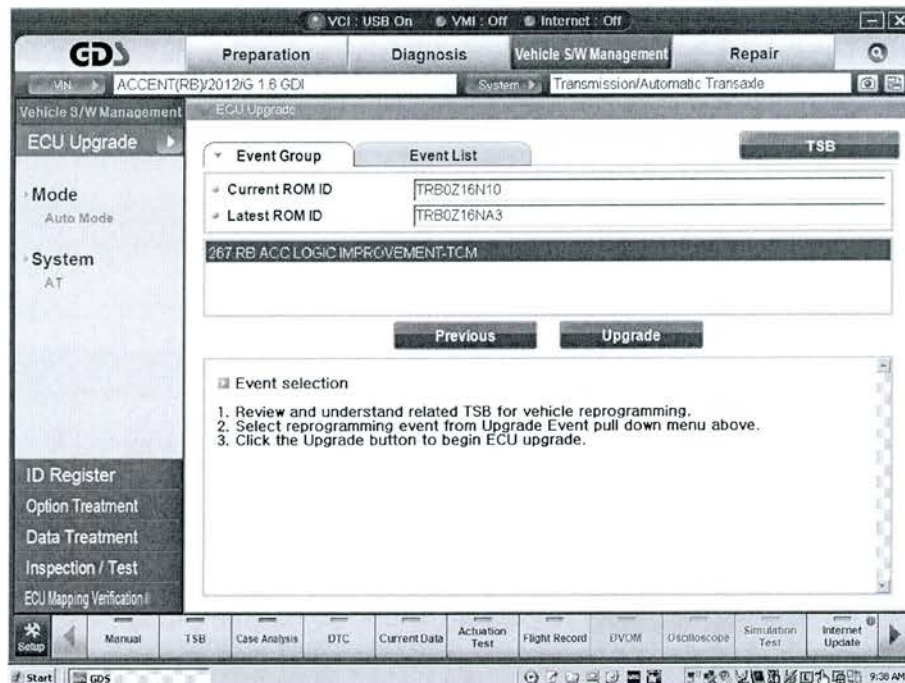
6. Enter the Password and click **OK**. The part number can be found on the PCM label.

MENU	PASSWORD
RB 1.6 NON-IMMO: 39110-2BAD5	1025

7. If the **"Voltage is OK"**, select **OK**. If not, select **CANCEL** and charge the vehicle battery.
8. The remaining steps are the same as Step 7~12 of the Auto Procedure.

GDS AUTO MODE TCM UPDATE PROCEDURE

1. From the GDS home page, select **ECU Upgrade**. If necessary, select the VIN.
2. Select **AT** as the system and then select **OK**.
3. Select **Auto Mode** and then select **Next**.
4. From the **System** tab, select **AT** and then select **OK**. The GDS will read the ROM ID. Confirm the ROM is applicable as shown on Page 1, "ROM ID Information".
5. Select update event **#267 RB ACC LOGIC IMPROVEMENT - TCM** or any later (higher) event number that shows in the GDS list. Select **Upgrade**.



6. If the screen indicates "**Voltage is OK**", select **OK**. If not, select **CANCEL** and charge the vehicle battery by running the engine for 10 minutes.
7. Updating will occur until 100% is reached on the bar graph. At the prompt, turn the ignition key OFF for 10 seconds, then turn it ON and select **OK**.
8. The GDS will confirm that TCM reprogramming is successfully finished. Select **OK**.
9. If the TCM update was not successful, go to **GDS MANUAL MODE TCM UPDATE PROCEDURE**.
10. Check for any Diagnostic Trouble Codes in the **ESC, EPS and TPMS** menus and erase any DTC.
11. From the home screen, select Vehicle, **AT** menu and **Option Treatment**. Select **Resetting Auto T/A Values** and follow the prompts on the screen.
12. Start the engine to confirm proper operation.

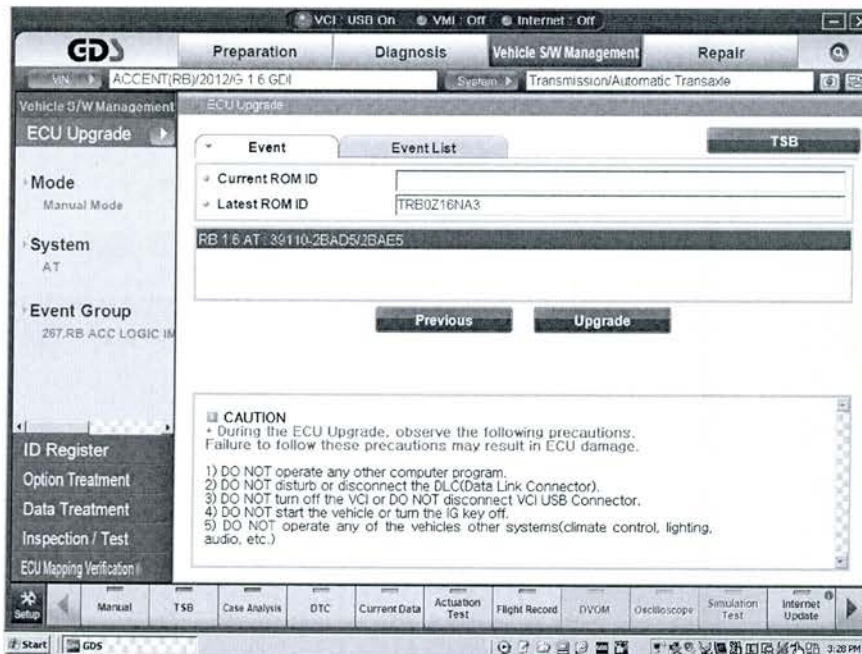
GDS MANUAL MODE TCM UPDATE PROCEDURE

*** NOTE**

In the event of AUTO MODE update failure (after it initiated the progress bar):

- You must attempt MANUAL MODE. Use the TCM P/N from the vehicle's TCM label if the correct TCM P/N is not clear from the ROM ID table.
- Replacing a TCM without carefully documenting that a MANUAL MODE update attempt was made will result in a charge back of your claim.

1. From the GDS home page, select **ECU Upgrade**. If necessary, select the VIN.
2. Select **AT** as the system and then select **OK**.
3. Select **Manual Mode** and then select **NEXT**.
4. From the **System** tab, select **AT** and then select **NEXT**.
5. Select update event **#267 RB AT 39110-2BAD5/2BAE5** or any later (higher) event number that shows in the GDS list. Select **Next**.



6. Enter the Password and click **OK**. The part number can be found on the PCM label.

MENU	PASSWORD
RB 1.6 TCM: 39110-2BAD5/2BAE5	1025

7. If the **"Voltage is OK"**, select **OK**. If not, select **CANCEL** and charge the vehicle battery.
8. The remaining steps are the same as Step 7~12 of the Auto Procedure.