



# Service Bulletin No. 361

MODEL <b>D Series Coaches</b>	TYPE <b>Field Change Program</b>	SECTION/GROUP <b>7 - Electrical</b>	DATE <b>Mar. 8, 2012</b>
SUBJECT <b>ELECTRONIC STABILITY CONTROL ( ESC ) TELL-TALE</b>			
CONDITIONS			

### Customer Complaint:

Customers may experience the electronic stability control ( ESC ) tell-tale illuminating and trouble codes 231-9 and 231-14 logging.

### Cause:

The cause is due to the ESC controller module not receiving tag axle signal from the J1939 connector.

### Corrective Action:

MCI strongly encourages owners of the coaches listed in the table below to schedule an appointment to have their coaches repaired as soon as possible by calling the MCI Customer Service Line at 1-800-241-2947. However, proper repairs will require the use of specialized equipment, and therefore MCI strongly urges customers to make an appointment to have the repairs performed by trained technicians who have the necessary equipment.

56452	57713	57830	58195	58907
58990	58992	58993	58994	58996 to 59000
59002	59004 to 59011	59013	59015	59017 to 59021
59025	59026	59050	59053	59059 to 59080
59083 to 59086	59089 to 59097	59099 to 59209	59211	59213
59221	59223 to 59229	59232	59233	59239 to 59280
59282	59287 to 59289	59290	59295	59346 to 59360
59363 to 59368	59370 to 59374	59377 to 59438	59445	59458 to 59486
59564 to 59566	59568	59569	59583 to 59609	59636 to 59653
59675	59676	59690 to 59693	59698 to 59701	59706
59707	59719 to 59741	59790	59791	59799 to 59802
59804 to 59808				

### Parts

Qty.	New P/N	Description
1	07-12-3913	Jumper Wire ( Vansco Multiplex equipped coaches only )
1	19-11-1465	Heat Shrink ( Vansco Multiplex equipped coaches only )
a/r		Bulb, 1.0 Inch, Federal Mogul, # 17131

### Service Procedure:

## **⚠ WARNING**

Read this entire procedure before beginning work.

Use Safe Shop Practices At All Times.

1. Turn the main battery disconnect switch to the OFF position. Chock both sides of the tires.
2. Open the engine door. Position the ENGINE RUN and ENGINE START switches on the engine compartment remote control box to the OFF position.

3. Open the #3 baggage bay compartment curbside and roadside doors. Install the positive lock pin to secure the door in the open position.
4. Remove the cover from the curbside rear junction box.
5. Locate the ABS diagnostic light assembly. Carefully remove the bulb socket ( refer to Figure 1 ).



**Figure 1.**

6. Measure the bulb length to ensure proper part installation ( refer to Figure 2 ).

## **NOTICE**

***If the bulb is the correct length of 1.0 inch, proceed to Step 7.***

***If the bulb is longer than the correct length discard the longer length bulb and replace with a new 1.0 inch bulb, Federal Mogul # 17131 ( refer to Figure 2 ).***



**Figure 2. Correct bulb length ( just under one inch ).**

7. Carefully re-insert the bulb into the socket. Reassemble the ABS diagnostic light assembly into the rear junction box provision.

**NOTICE**

**Steps 8. to 29. are applicable to coaches equipped with the Vansco Multiplex system.**

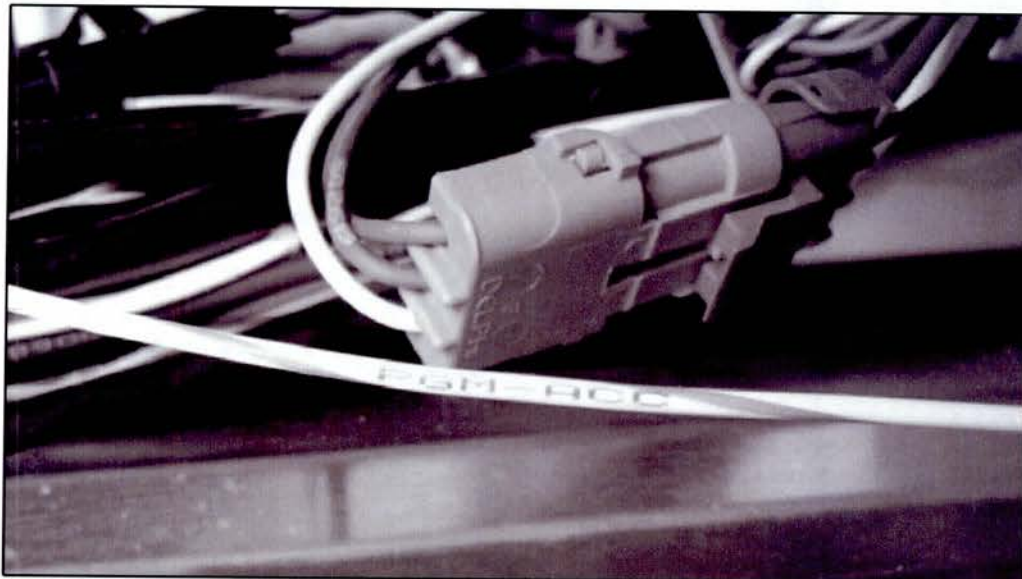
**Steps 30. to 38. are applicable to coaches equipped with the Actia or I/O Controls Multiplex system.**

8. Locate the Pocket Gateway module in the rear junction box ( refer to Figure 3 ).



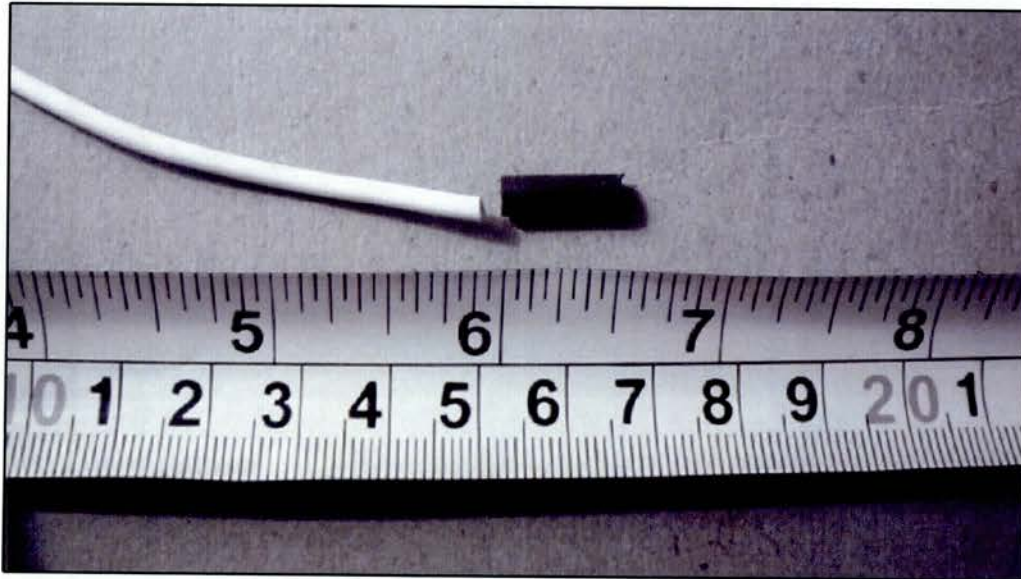
**Figure 3.**

9. Locate the white/green tracer wire labeled PGM-ACC exiting the top connector from Pin 12 ( refer to Figure 4 ).
10. Cut any existing tytraps to unsecure the PGM-ACC wire for a distance of twenty two ( 22 inches ) ( refer to Figure 3 ).



**Figure 4.**

11. Using wire cutters, cut the wire. Using shrink wrap, terminate the end of the wire routed to the curbside of the coach.



**Figure 5.**

12. Reroute the wire coming from the Gateway module towards the top connector on the Grounding Module and remove the connector and the end cap.
13. Install connector number 1062-16-0122 on to the end of the wire and install it into the top connector on Grounding Module in pin location #2.
14. Reassemble connector on Grounding module.
15. Using tyrap, secure all wiring.
16. Re-install the rear junction box cover.
17. From the driver's seat, use a diagnostic laptop to access the Vansco multiplex software.
18. Upload the current Ladder Logic and save in "Uploads by VIN" folder.
19. Once saved click on "Download Logic".
20. Open file "ESC downloads by VIN" and choose the correct VIN number file for the download.
21. Once programmed, exit the Vansco program.
22. Connect to Toolbox Software.
23. Open the applicable screen showing Fault Codes. Take a screen shot.
24. Open a blank word processing document, and paste the screen print on the page. Save the screen print with the VIN information to be supplied to MCI as a prerequisite for retrofit payment ( refer to Figure 6 ).
25. Clear all Fault Codes.

- 26. Take screen shot of cleared screen and place on a blank word processing document ( refer to Figure 6 ).
- 27. After exiting Fault Codes take a screen shot of Meritor Wabco ABS screen and save in a document.

**VIN: 5980X – Date: 3/8/2012**  
**Mileage: 224477 – Bulb: YES // NO**

Before

**Faults:**

NUM	FAULT NAME	TYPE	TIMES	SID	FMI
1	SAE 1939 – Timeout	Stored	127	231	14
2	ESC Parameter Wrong	Stored	127	253	14

**Repair Instructions:**

Update Clear Faults Print Save Exit

After

**Faults:**

NUM	FAULT NAME	TYPE	TIMES	SID	FMI
-----	------------	------	-------	-----	-----

**Repair Instructions:**

Figure 6.

**Meritor WABCO ABS**

Tractor ECU Display Component Tests ESC Menu Help

**ECU Information**

ECU Type	Cab (12V)
Configuration	6S/6M
Part Number	4008506370
Manufacture Date	13/2009
Serial Number	001028
Software Rev.	E404
Engine Data Link	J1939, ESC

**Wheel Sensor**

	RPM	MPH
Left Front	< 7	0
Right Front	< 7	0
Left 2nd	< 7	0
Right 2nd	< 7	0
Left 3rd	< 7	0
Right 3rd	< 7	0

**Faults**

None Existing None Stored

**Learned Components**

ATC Valve  Retarder Relay  Data Link

**Control Status**

ABS Brake	Off
ABS Retarder	Off
ATC Brake	N/A
ATC Engine	Off

**Switches**

ABS	Off
ATC	Off

**Lamps**

ABS	ATC	Trailer
<input type="checkbox"/>	Off	N/A

**Voltages**

Diagonal 1	12.48
Diagonal 2	12.41
Battery	12.40

**Road Speed**

0 (mph)

ATC Enabled 3/6/2012 5:10 PM

Figure 7.

28. Save this document in your laptop by VIN number in the file you created.
  29. Drive the coach enough of a distance to clear any ABS tell-tale that may be illuminated on the dash.
- Vansco Multiplex system Procedure complete.

## NOTICE

**Steps 30. to 38. are applicable to coaches equipped with the Actia or I/O Controls Multiplex system.**

30. Using a laptop, install the applicable program into the standard gateway ( ID 65 ).
  31. Load the VIN specific program into the MBC module.
  32. Open the applicable screen showing Fault Codes. Take a screen shot.
  33. Open a blank word processing document, and paste the screen print on the page. Save the screen print with the VIN information to be supplied to MCI as a prerequisite for retrofit payment.
  34. Clear all Fault Codes.
  35. Take screen shot of cleared screen and place on a blank word processing document.
  36. After exiting Fault Codes take a screen shot of Meritor Wabco ABS screen and save in a document.
  37. Save the document in your laptop by VIN number.
  38. Drive the coach enough of a distance to clear any ABS tell-tale that may be illuminated on the dash.
- Actia or I/O Controls Multiplex system Procedure complete.*

Mail or fax the completed limited warranty claim form and verification form to MCI's warranty department, or photocopy and mail to:

MCI Fleet Support  
Attn: Warranty Department  
7001 Universal Coach Drive  
Louisville, KY 40258  
Fax Number 1-800-360-8886

to receive credit for the hours used to complete this task. Contact the MCI Fleet Support Technical Center at 1-800-241-2947 for any further information.

### **Field Change Program Conditions:**

Specialized programming equipment is required to perform the procedures in this bulletin.

The necessary parts will be provided at no cost to you.

A labor allowance of 0.5 hours will be granted for the procedure of performing the procedures in this bulletin on D Series coaches.

This labor allowance will be credited to your MCI Fleet Support Parts Account on receipt of the attached "MCI Field Change Program Verification Form" and a "Warranty Claim Form" as detailed in your Owner Warranty manual to MCI's Warranty department. A "MCI Field Change Program Verification Form" needs to be submitted for each VIN affected. Photocopy the attached "MCI Field Change Program Verification Form" as required for the number of affected coaches in your fleet.

This program will end on September 24, 2012.

Motor Coach apologizes for any inconvenience resulting from this campaign, but urges you to implement this change as soon as possible.

Sincerely,

*Motor Coach Industries*



Reliability Driven™

## MCI FIELD CHANGE PROGRAM (FCP) VERIFICATION

CONTACT INFORMATION	
CUSTOMER NAME: _____  (PLEASE PRINT)	
FCP INFORMATION – ONE FORM PER UNIT	
FCP#: _____	Coach Model _____ Model Year _____
COACH SERIAL #: (At least the last 5 digits)	DATE COMPLETED ___ / ___ / ___
MILEAGE:	
<b>IMPORTANT: TO RECEIVE CREDIT FOR ANY ALLOWABLE LABOR CHARGES, THIS VERIFICATION FORM MUST BE RETURNED TO MCI UPON COMPLETION OF THE FCP.</b>	
SUBMITTED BY: (Please Print) _____ DATE ___ / ___ / ___	
TITLE: (Please Print) _____	
SIGNATURE: _____	
COMMENTS:   	

FAX TO: 800-360-8886

MAILING ADDRESS:

MOTOR COACH INDUSTRIES  
ATTN: WARRANTY DEPT.  
7001 UNIVERSAL COACH DRIVE  
LOUISVILLE, KY 40258

MCI part # 03-15-7738C