



Technical Bulletin

Division: Automotive
 Category: Technical

Section Title: Engine
 TSB No. TS 34 04262

SUBJECT: SERVICE MANUAL UPDATE: TENSIONER AND IDLER PULLEY REMOVAL AND INSTALLATION
MODEL(S): GRAND VITARA (JB424)
YEAR: 2009~2011

CONDITION: This bulletin is to inform you of updates made to the “Tensioner and Idler Pulley Removal and Installation” described in the engine charging system section 1J for 2009~2011 GRAND VITARA (JB424) Service Manuals.

CORRECTION: Please refer to the changes illustrated in the attached pages of this bulletin that have been made to the service manual section(s) applying to the 2009~2011 GRAND VITARA (JB424). The following table describes the Service Manual and the corresponding section(s) that have been added/amended. The Online Service Manual has been revised prior to the release of this bulletin.

AFFECTED SERVICE MANUAL(S)

Manual Name	Part Number	Corresponding Item
2009MY Grand Vitara (JB424/JB632) Service Manual	99500-66J30-33E	<u>Section 1J: Repair Instructions</u> ➤ Tensioner and Idler Pulley Removal and Installation
2010MY Grand Vitara (JB424/JB632) Service Manual	99500-66J40-33E	
2011MY Grand Vitara (JB424) Service Manual	99500-66J50-33E	

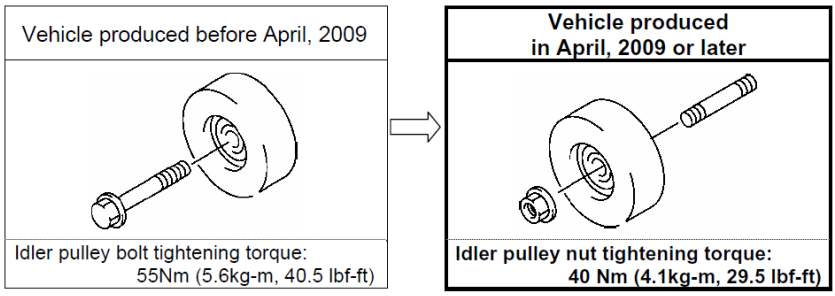
Technical Service Department
 Dealership Circulation – Initial and file:

Service Manager	Parts Manager	Service Advisor	Technicians						

Suzuki bulletins are intended for use by professional technicians, NOT a “do-it-yourselfer.” They are written to inform these technicians of conditions that may occur on some vehicles, or to provide information that could assist in the proper service of a vehicle. Properly trained technicians have the equipment, tools, safety instructions, and know-how to do a job properly and safely. If a condition is described, DO NOT assume that the bulletin applies to your vehicle, or that your vehicle will have that condition. See your authorized Suzuki dealer for information on whether your vehicle may benefit from the information. Suzuki reserves the right to change technical specifications at any time without prior notice.

DETAILS FOR UPDATES MADE

- Steps added to the tensioner and idler removal procedure for Removal of the Water Pump.
- The idler pulley fastener and the tightening torque have been changed as follows beginning with April 2009 production.



Tensioner and Idler Pulley Removal and Installation

Removal

- 1) Remove accessory drive belt. (Accessory Drive Belt Removal and Installation)
- 2) Remove idler pulleys(2).
- 3) Drain coolant. (Cooling System Draining)
- 4) Remove water pump. (Water Pump Removal and Installation)
- 5) Remove tensioner(1).

Installation

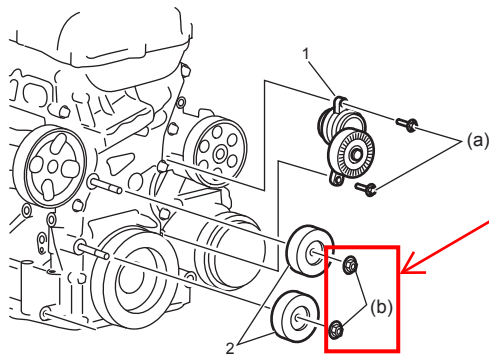
Reference: "Tensioner and Idler Pulley Inspection"
Reverse removal procedure noting the following.

- Tighten tensioner bolts and idler pulley nuts to specified torque.

Tightening torque

Tensioner bolt (a): 25 N·m (2.5 kgf-m, 18.5 lbf-ft)

Idler pulley nut (b): 40 N·m (4.1 kgf-m, 29.5 lbf-ft)



CHANGED

Tensioner and Idler Pulley Removal and Installation

Removal

- 1) Remove accessory drive belt. (Accessory Drive Belt Removal and Installation)
- 2) For N32A, remove tensioner(1) and idler pulley(2).
- 3) For J24B, remove idler pulleys(3) and tensioner(4) as follows.
 - a) Drain coolant. (Cooling System Draining): J24B
 - b) Remove idler pulleys(3).
 - c) Remove water pump. (Water Pump Removal and Installation): J24B
 - d) Remove tensioner(4).

Installation

Reference: "Tensioner and Idler Pulley Inspection"
Reverse removal procedure noting the following.

- Tighten tensioner bolts and idler pulley bolts and/or nuts to specified torque.

Tightening torque

Tensioner bolt (a): 25 N·m (2.5 kgf-m, 18.5 lbf-ft)

Idler pulley bolt (b): 55 N·m (5.6 kgf-m, 40.5 lbf-ft)

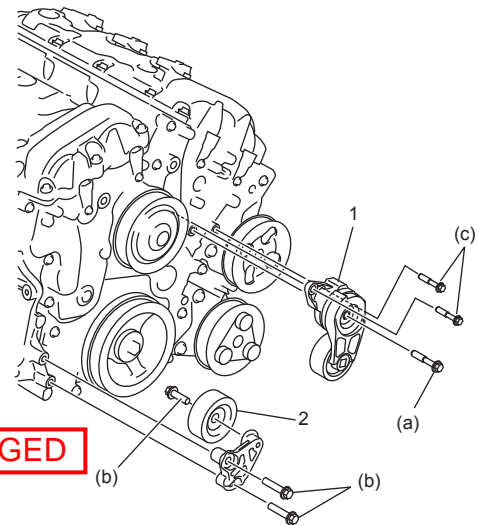
Idler pulley nut (d): 40 N·m (4.1 kgf-m, 29.5 lbf-ft)

- For N32A, tighten timing chain cover bolts to 20 N·m (2.0 kgf-m, 15.0 lbf-ft), and retighten them to 60 N·m (6.1 kgf-m, 44.5 lbf-ft).

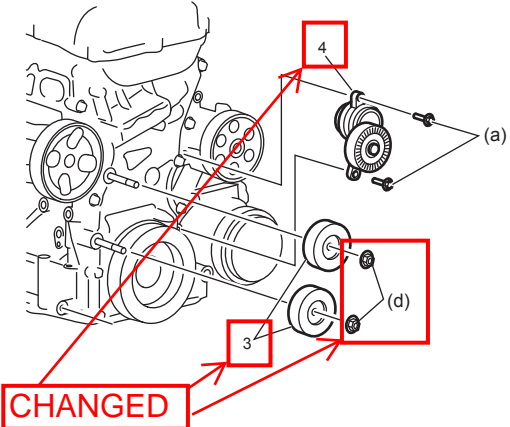
Tightening torque

**Timing chain cover bolt * (c): 20 N·m → 60 N·m
(2.0 kgf-m → 6.1 kgf-m, 15.0 lbf-ft → 44.5 lbf-ft)**

[A]



[B]



[A]: N32A

[B]: J24B

Tensioner and Idler Pulley Removal and Installation

Removal

- 1) Remove accessory drive belt. (Accessory Drive Belt Removal and Installation)
- 2) For N32A, remove tensioner(1) and idler pulley(2).
- 3) For J24B, remove idler pulleys(3) and tensioner(4) as follows.
 - a) Drain coolant. (Cooling System Draining): J24B
 - b) Remove idler pulleys(3).
 - c) Remove water pump. (Water Pump Removal and Installation): J24B
 - d) Remove tensioner(4).

Installation

Reference: "Tensioner and Idler Pulley Inspection"
Reverse removal procedure noting the following.

- Tighten tensioner bolts and idler pulley bolts and/or nuts to specified torque.

Tightening torque

Tensioner bolt (a): 25 N·m (2.5 kgf-m, 18.5 lbf-ft)

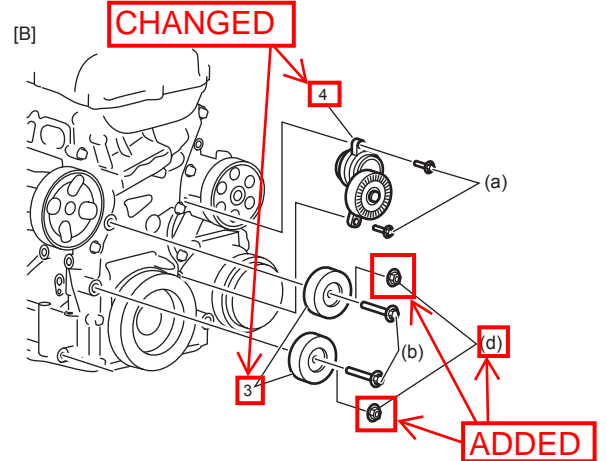
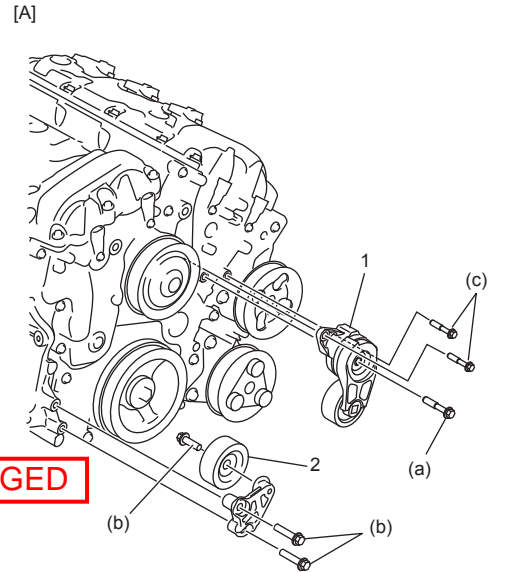
Idler pulley bolt (b): 55 N·m (5.6 kgf-m, 40.5 lbf-ft)

Idler pulley nut (d): 40 N·m (4.1 kgf-m, 29.5 lbf-ft)

- For N32A, tighten timing chain cover bolts to 20 N·m (2.0 kgf-m, 15.0 lbf-ft), and retighten them to 60 N·m (6.1 kgf-m, 44.5 lbf-ft).

Tightening torque

Timing chain cover bolt * (c): 20 N·m → 60 N·m
(2.0 kgf-m → 6.1 kgf-m, 15.0 lbf-ft → 44.5 lbf-ft)



[A]: N32A [B]: J24B