


 Applies To: **2012 CR-V – ALL**
April 6, 2012

Front Door Does Not Open From the Inside

SYMPTOM

Either the driver's door or the front passenger's door or both doors do not open from the inside using the inner door handle.

PROBABLE CAUSE

The inner handle cable has disengaged from the handle.

CORRECTIVE ACTION

Replace both front inner door handles and, if needed, their caps.

PARTS INFORMATION

Left Inner Door Handle:

P/N 72160-T0A-A02ZA

P/N 72160-T0A-A02ZB

Right Inner Door Handle:

P/N 72120-T0A-A02ZA

P/N 72120-T0A-A02ZB

Left Inner Handle Cap: (Replace only on North American-built vehicles: VIN begins with 5J6 or 2HK).

P/N 72161-T0A-A01ZA

P/N 72161-T0A-A01ZB

Right Inner Handle Cap: (Replace only on North American-built vehicles: VIN begins with 5J6 or 2HK).

P/N 72121-T0A-A01ZA

P/N 72121-T0A-A01ZB

TOOL INFORMATION

KTC Trim Tool Set: SOJATP2014

WARRANTY CLAIM INFORMATION

The normal warranty applies.

Operation Number: 8181C7

Flat Rate Time: 0.3 hour

Failed Part: P/N 72160-T0A-A02ZA

Defect Code: 05701

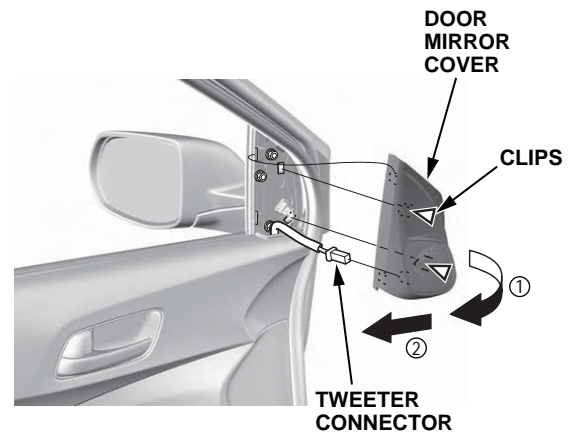
Symptom Code: 03217

Skill Level: Repair Technician

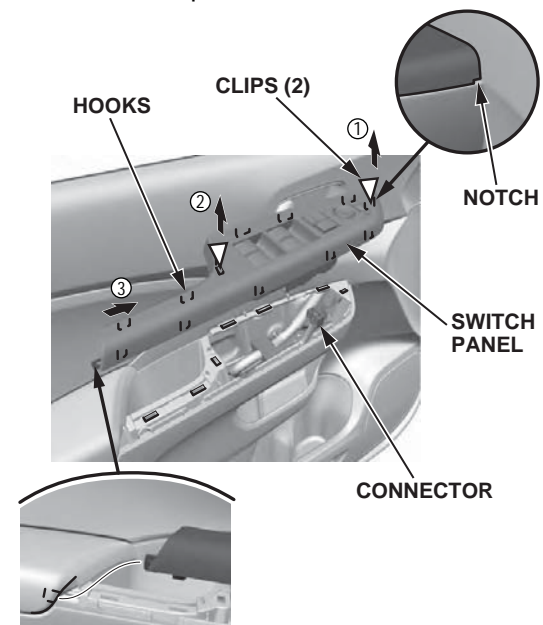
REPAIR PROCEDURE

NOTE: Use the appropriate tool from the KTC trim tool set to avoid damage when removing components.

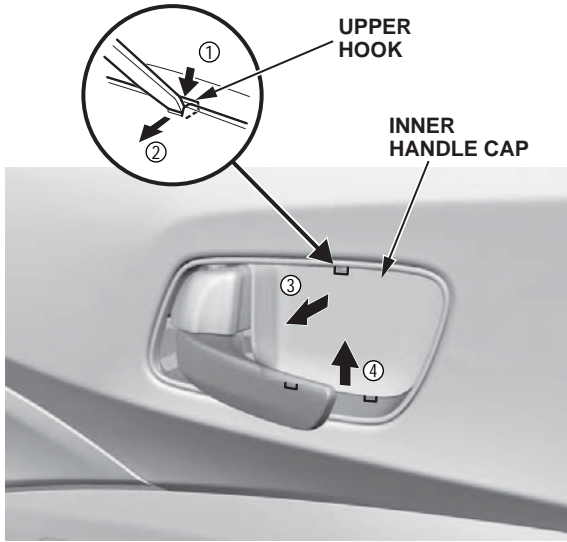
- Carefully pry out the door mirror cover to detach the clips, then remove the door mirror cover. If necessary, disconnect the tweeter connector.



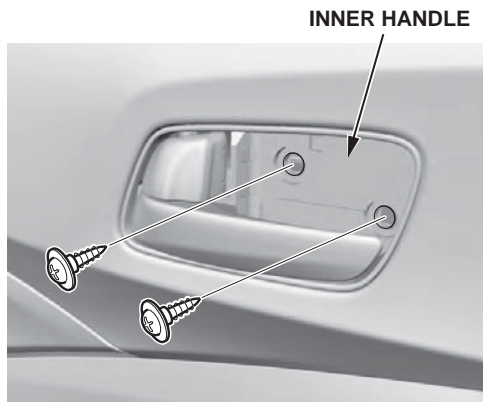
- Carefully pry out on the notch in the power window switch panel to detach the clips and the hooks. Disconnect the connectors, then remove the power window switch panel.



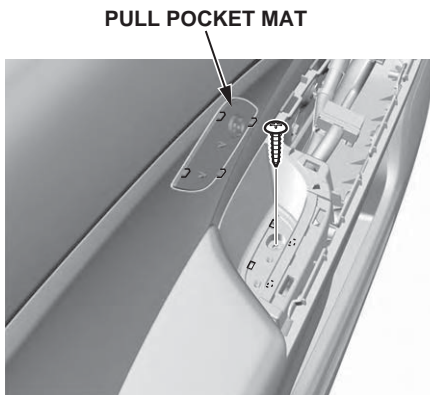
- Carefully pry out on the upper hook on the inner handle cap, then pull back the inner handle cap to remove it.



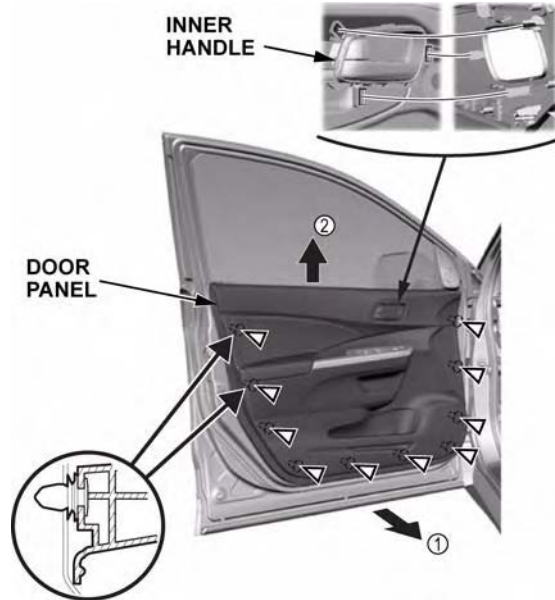
- Remove the two screws securing the inner handle.



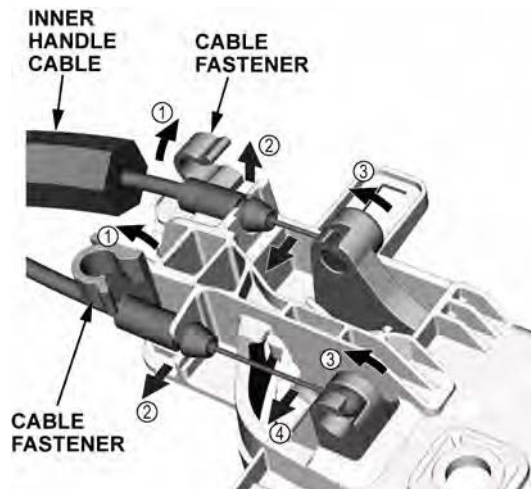
- Remove the pull pocket mat, then remove the screw.



- Starting at the bottom edge of the door panel, detach the clips with a commercially available trim pad remover.



- Starting at the rear, pull the door panel upward.
- Remove the inner handle from the door panel, then remove the door panel.
- Release the cable fasteners, then disconnect the latch cable and the inner handle cable, if not already disconnected in the order shown.



- Install the latch cable and inner handle cable to the new inner handle, secure the cable fasteners, then install the new inner handle.
- Reinstall the door panel, the pull pocket mat, and the new inner handle cap.
- Reconnect the connectors to the power window switch panel, and reinstall the power window switch panel.
- If necessary, reconnect the tweeter connector. Reinstall the door mirror cover.
- Repeat steps 1 thru 13 on the opposite inner door handle.