



Service Bulletin

File in Section: -

Bulletin No.: PI0639

Date: January, 2012

PRELIMINARY INFORMATION

Subject: Service StabiliTrak Message Displayed in DIC, StabiliTrak Indicator Light On, DTC C0455 and/or C0710 Set

Models: 2007-2012 Cadillac Escalade, Escalade ESV, Escalade EXT
 2007-2012 Chevrolet Avalanche, Colorado, Silverado, Suburban, Tahoe
 2008-2012 Chevrolet Express
 2007-2012 GMC Canyon, Sierra, Yukon, Yukon Denali, Yukon XL, Yukon Denali XL
 2008-2012 GMC Savana

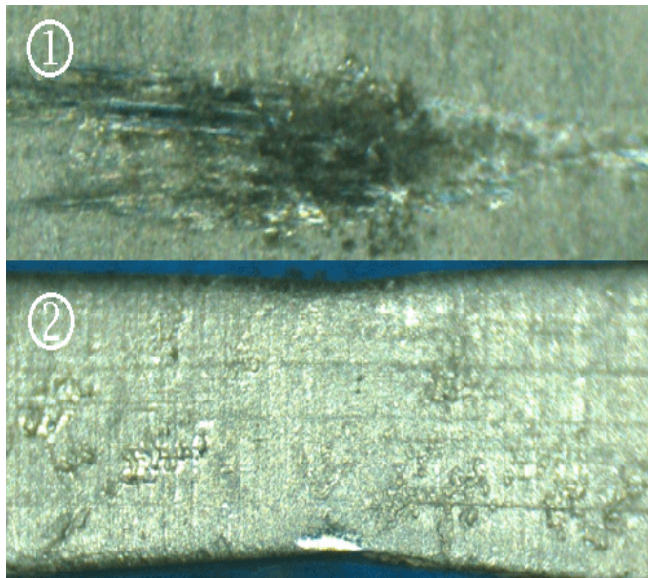
Condition/Concern

In rare cases, some customers may comment about the Service StabiliTrak message being displayed in the DIC. The StabiliTrak® Indicator light may also be on.

When checking the vehicle for DTCs, the electronic brake control module (EBCM) may report C0455 and/or C0710 set as current or in history.

This condition may be caused by an increase in resistance in the circuits connecting the steering position sensor and the EBCM due to fretting corrosion on the connector terminals.

Note: Fretting corrosion looks like little dark smudges on the electrical terminals and appear where the actual electrical contact is being made. In less severe cases it may be unable to be seen or identified without the use of a magnifying glass.



2745017

Legend

- (1) Corrosion on female terminal contact point
- (2) Clean female terminal contact point

Recommendation/Instructions

Important: DO NOT replace the steering position sensor for this condition. The terminal pins on the sensor do not have the same concentration of deposits.

1. Disconnect the steering wheel position sensor connector.

Important: DO NOT apply an excessive amount of dielectric lubricant to the connector, as hydrolock may result when attempting to mate the connector. Use **ONLY** a clean nylon brush that is dedicated to the repair of this specific condition.

2. With a one-inch nylon bristle brush, apply dielectric lubricant to both the sensor side and the harness side of the affected connector.
3. Reconnect the steering wheel position sensor connector and wipe away any excess lubricant that may be present.
4. Confirm end to end circuit resistance is less than 0.5 ohms. If resistance is still high, replace the harness side connector with the service pigtail. Refer to the Steering Angle (Position) Sensor connector end view in SI for correct service connector part number.

Parts Information

Part Number	Description
12377900 (In Canada, use 10953529)	Dielectric Lubricant (50 gram tube)

Warranty Information

For vehicles repaired under warranty, use:

Labor Operation	Description	Labor Time
N9612*	Lubricate Connector with Dielectric Lubricant	01-0.3 hr

*This labor operation is for bulletin use only. It will not be published in the Labor Time Guide.
Note: Any additional time for component R&R to gain access or for repair time greater than 0.3 hr must be submitted as Other Labor Hours and requires appropriate authorization and service management approval.