



Service Bulletin

File in Section: -

Bulletin No.: PI0651

Date: January, 2012

PRELIMINARY INFORMATION

Subject: Rear Brake (Parking Brake) Does Not Release, Excessive Noise, Brake Drag, Brake Dust

Models: 2011-2012 Chevrolet Silverado 2500-3500 Series
2011-2012 GMC Sierra 2500-3500 Series

Condition/Concern

Some customers may comment that the parking brake is dragging or does not seem to release completely. They may also experience a noise from the rear brakes and/or excessive brake dust on the rear wheels.

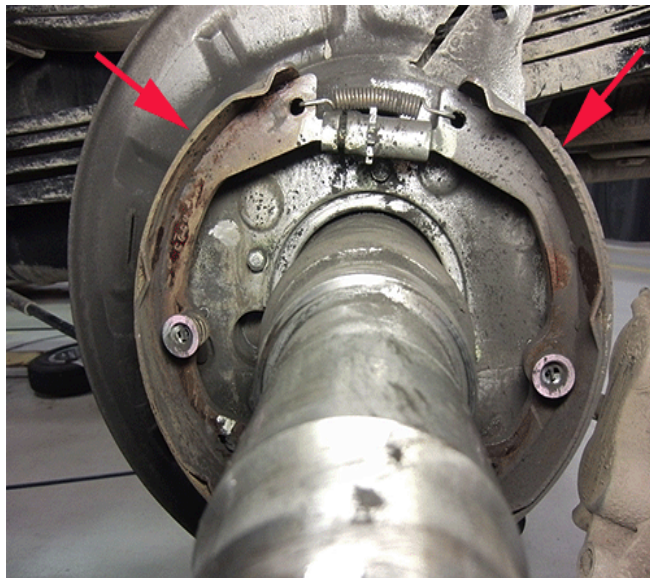
The rear parking brake anchor backing plate (rear brake backing plate) bracket may allow the shoe to contact the drum when the brake is released.

Recommendation/Instructions

Note: This condition is most prevalent on the driver side of the vehicle, however it may also be present on the passenger side.

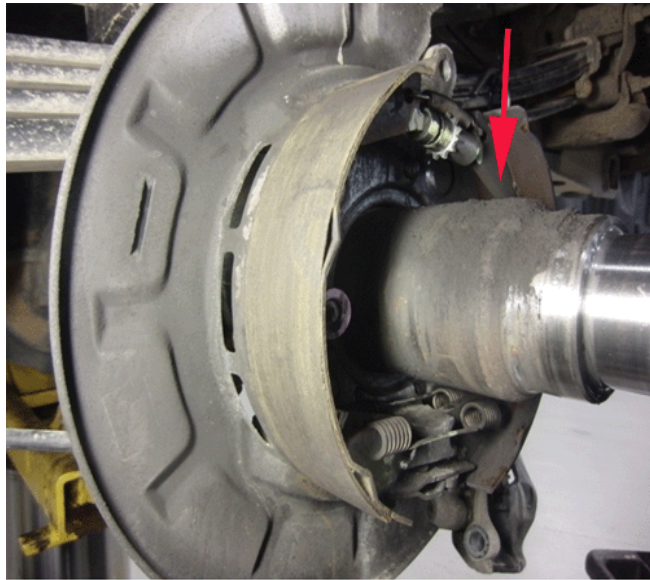
Use the following steps to diagnose and correct the condition.

1. Remove the rear rotor and hub assembly on the affected wheel(s). Refer to Rear Brake Rotor Replacement (J90, J96) in SI.
2. Inspect the parking brake components for the following conditions:



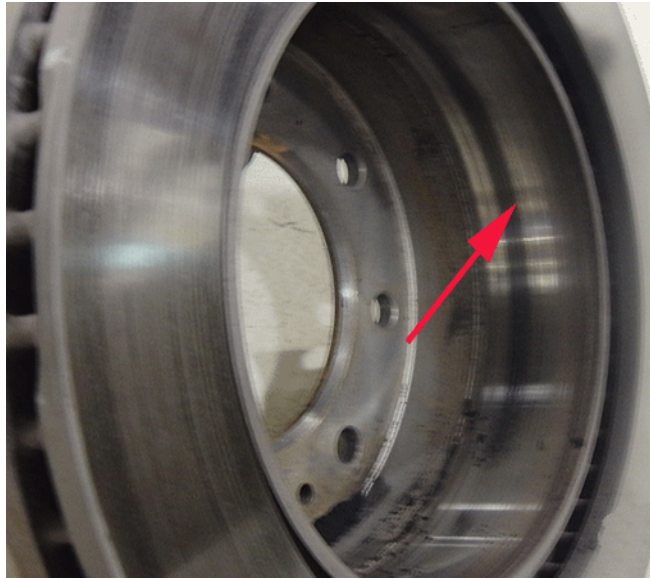
2748910

- Significant and uneven wear on Park Brake Lining material.
(In this example, the front shoe is worn down to the metal, but the rear shoe has little to no wear).



2748912

- Excessive park brake dust on the axle.



2748914

- Highly polished surface on inside of rotor (park brake shoe contact area).



2748916

- Excessive park brake dust found on inside of rotor.
3. If the parking brake components display any of the above conditions, replace the parking brake shoes and the rear parking brake anchor backing plate. Refer to Parking Brake Shoe Replacement (J90, J95, J96) and Rear Parking Brake Anchor Backing Plate Replacement (J90, J95, J96) in SI.

Parts Information

Part Number	Description
20909261	1 PLATE, RR PARK BRK ANC BKG
20909250	1 SHOE KIT, RR PARK BRK

Warranty Information

For vehicles repaired under warranty, use:

Labor Operation	Description	Labor Time
H3056	Rear Parking Brake Anchor Backing Plate Replacement	Use Published Labor Operation Time
H3057	Rear Parking Brake Anchor Backing Plate Replacement - Both Sides	
H2947	Parking Brake Shoe Replacement	