



SP 2-235-001 SERVICE PROGRAM

January, 2012

Attention:

Service Managers / Parts Managers

Subject:

ACX 2010 ISL Exhaust Pipe Mounting
Installation

Description of Service Program:

This Service Program provides information regarding the installation of the ISL Exhaust Pipe Mounting on certain 2010 model-year ACX model vehicles.

Program Expires:

January 25, 2013

Vehicles Affected:

There are 265 affected vehicles with serial numbers in the range 210941 through 212302. Refer to the VIN list beginning on Page 7.

Service Responsibility:

Service Programs are performed on eligible vehicles at no charge to the owner until the expiration date listed above.

Service Program Information:

Service Programs are product modifications and/or product improvements that Autocar has determined will enhance the operation of the truck. In a continuing effort to inform our customers of potential service issues

While being committed to continuous product improvement, Autocar is not liable for updating existing chassis after they have been placed in service.

Questions regarding this Service Program should be directed to Autocar Technical Support at 888-218-3611.

To Obtain Parts:

Please contact Autocar at 877-973-3486, or 765-489-6016.

Required Parts:

- (1) S2351002K001 Service kit:
 - (2) A2350835-001 Gasket
 - (1) A2350887-002 Exhaust pipe
 - (1) A2350939-001 Support bracket
 - (1) A2350940-001 Bracket
 - (2) S2350006-001 Spacer
 - (1) S2351005K001 Hardware kit:
 - (1) 8071366 U-bolt
 - (2) GE286237BL01 Locknut
 - (2) GE410137AK12 Bolt
 - (2) GM410112AB14 Bolt

Claims for Reimbursement:

Submit a claim for reimbursement in accordance with Autocar's Warranty Administration Manual.

Claim Coding Information:

Labor Operation	Time Allowance	Description
--------------------	-------------------	-------------



SP 2-235-001 SERVICE PROGRAM

January, 2012

Tools Required:

1/2" Drive ratchet wrench
1/2" Drive torque wrench up to 95 ft-lb
7/16" Socket 1/2" drive
Adjustable pliers
Hose pliers
9/16" Deep socket 1/2" drive
9/16" Combination wrench
13mm Socket 1/2" drive
16mm Socket 1/2" drive

Safety Notices

WARNING

Allow the vehicle's engine and cooling system to cool to ambient temperature before performing the repair procedure. A hot engine or cooling assembly may cause burns or other personal injury.

DANGER

To prevent eye injury, always wear eye protection when performing vehicle maintenance, service or inspection.

DANGER

Before working on a vehicle, set the parking brake, place the transmission in neutral and block the wheels. Failure to do so can result in unexpected vehicle movement and can cause serious personal injury or death.

CAUTION

LOCKOUT/TAGOUT PROCEDURES

Before entering the vehicle or vehicle body, read and follow OSHA regulations concerning entry and working in "CONFINED SPACE" OSHA 1910.146 and "LOCKOUT/TAGOUT" OSHA 1910.147. Follow OSHA regulations while performing any work on the vehicle. The vehicle must be disabled by the following steps before performing any work on the vehicle:

1. *Place the transmission in NEUTRAL.*
2. *Set the parking brake.*
3. *Shut the engine OFF.*
4. *Lock cab doors, keep the key in your pocket. Block the wheels before entering the body or performing any work on the vehicle.*
5. *Turn the battery disconnect switch OFF, if equipped.*
6. *Completely drain the air from the primary/A system and secondary/B system by opening the drain valves on the air tanks themselves or by using the drain manifold if supplied. When draining the air tanks, do not look into the area where air is draining. Dirt or sludge particles may be expelled in the air stream and can cause eye injury.*
7. *Place magnetic "DANGER" signs on both cab doors before entering the body or performing any work on the vehicle.*
8. *Take proper precautions before working under the vehicle. Use ramps approved for the weight of your vehicle, or use floor jacks and stands. Never work under a vehicle supported by jacks alone. Always use jack stands to support the vehicle.*

SP 2-235-001 SERVICE PROGRAM

January, 2012

ISL Exhaust Pipe Mounting Installation

1. Raise the cab.

DANGER

Due to the danger of sustaining personal injury and/or damage to the vehicle, never attempt to raise the cab outdoors under extremely windy conditions. Strong wind conditions could force the cab beyond the normal limits of its travel. Never rely on the hydraulic pressure to hold the cab in an open position. Always use the safety pin in the cab tilt lock tube to prevent serious personal injury or death.

CAUTION

Remove the pump handle when not in use. It may stick out and could cause injury to passersby.

Remove or secure all loose articles and close all doors before raising the cab. The area above and ahead of the cab must be clear from obstructions. Place front wheels in a straight ahead position.

Remove the pump handle from its storage on the inside of the cab near the driver or passenger seat.

Place the selector lever on the hydraulic pump in the RAISE position. Insert the pump handle into the pump and operate the handle in an up and down motion. The hydraulic cab latches will open, then the hydraulic cylinders will lift the cab until the midpoint (top) is reached.

Once the cab has reached its midpoint, the cab will move forward to the fully open position. The safety pin in the cab tilt lock device must be installed when the holes line up in the sliding bar.

2. Locate the primary exhaust pipe at the turbocharger outlet (see Figure 1).

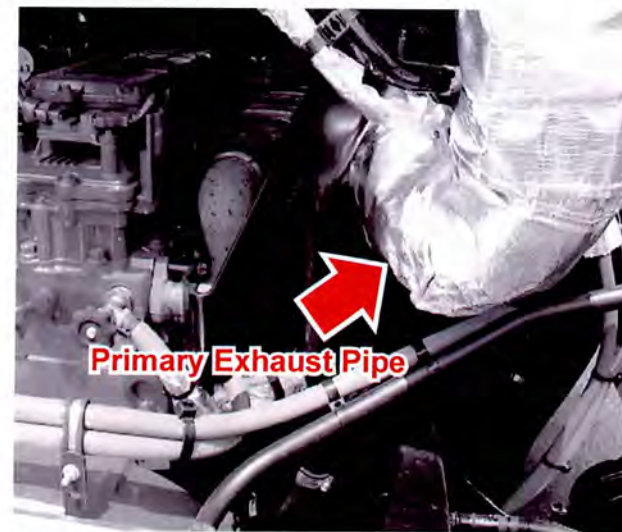


Figure 1

3. Remove the existing exhaust heat blanket, primary pipe and related components including the support brackets and the rear exhaust manifold bolts. Place the exhaust manifold bolts and heat blanket aside for reinstallation (see Figure 2 showing all parts removed).

SP 2-235-001
SERVICE PROGRAM

January, 2012

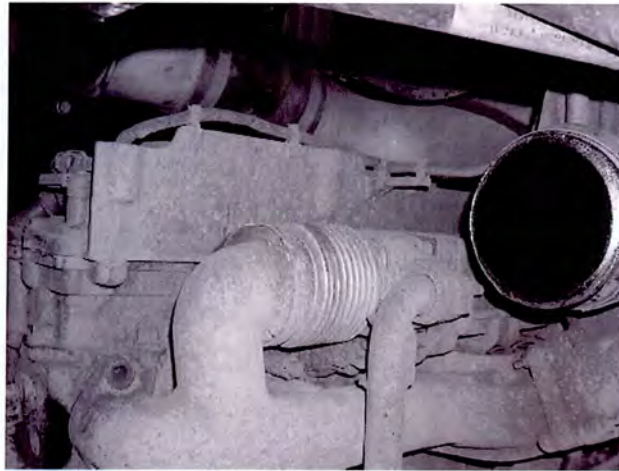


Figure 2

4. If equipped with a coolant shut off hand valve, close by rotating the hand valve clockwise. Using hose pliers, pinch the coolant hose. Using adjustable pliers, release the constant tension clamp and remove the hose from the hand valve and set aside for reinstallation (see Figure 3).



5. Locate and remove the rear engine lifting eye and set aside for reuse. Discard the hardware (see Figure 4).

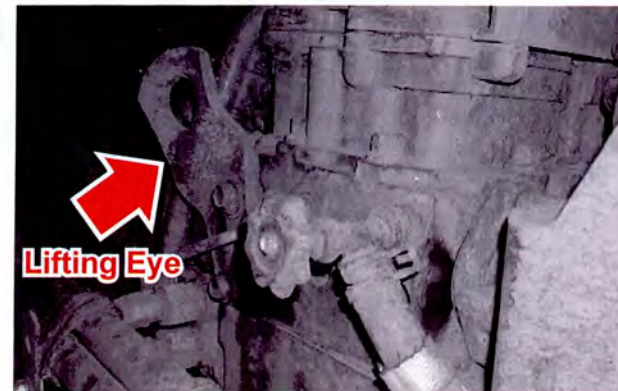


Figure 4

6. Place the exhaust pipe support bracket A2350939-001 into position. Reinstall the rear engine lifting eye that was removed and set aside in step 5, on top of the exhaust pipe support bracket and secure with two GM410112AB14 bolts. Tighten the fasteners to 75 ft-lb (102 N·m) of torque (see Figure 5).



SP 2-235-001
SERVICE PROGRAM

January, 2012

7. Reinstall the coolant shut off hand valve and the hose that was set aside in step 4. Open the valve by rotating the hand valve counterclockwise (see Figure 5).
8. Install two spacers S2350006-001 onto the exhaust manifold bolts that were removed and set aside in step 3. Install the bolt and spacer assembly into the exhaust manifold and tighten to 45 ft-lb (60 N·m) of torque (see Figure 6).
9. Install two exhaust gaskets A2350835-001 (one on each end of pipe A2350887-002). Install the pipe and gasket assembly onto the turbocharger outlet housing and bellows pipe flanges. Tighten the V-band clamps to 12 ft-lb (16 N·m) of torque (see Figure 7).

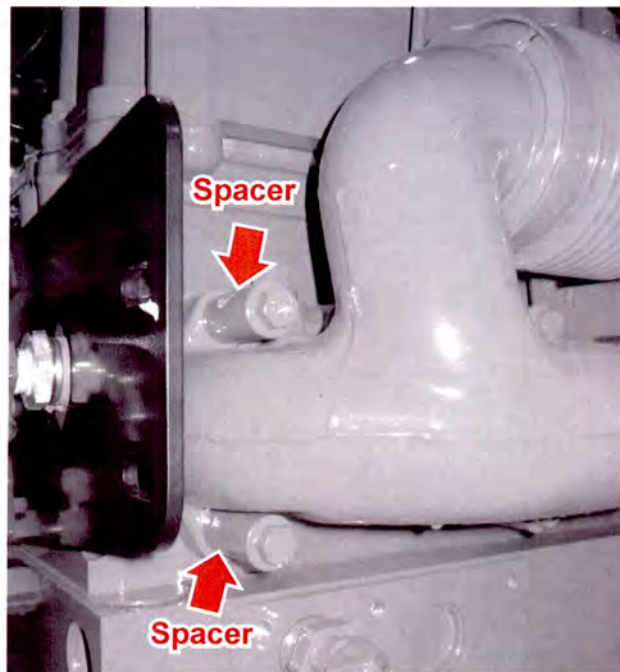


Figure 6

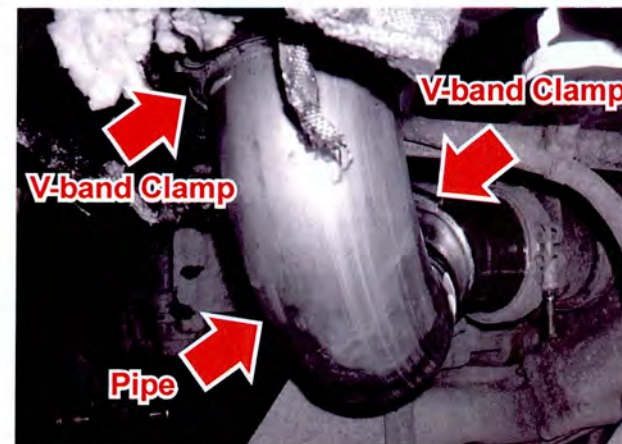


Figure 7

SP 2-235-001
SERVICE PROGRAM

January, 2012

10. Place the exhaust support bracket A2350940-001 into position. Install but do not tighten the two GE410137AK12 bolts, two GE286237BL01 nuts and one U-bolt 8071366. Once all are in position, tighten the bolts to 23 ft-lb (31 N·m) of torque and tighten the U-bolt to 23 ft-lb (31 N·m) of torque (see Figure 8).

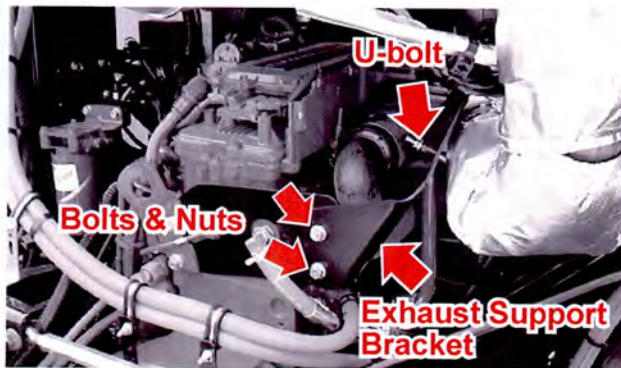


Figure 8

11. Install the heat blanket that was set aside in step 3 and secure with existing snaps (see Figure 9).

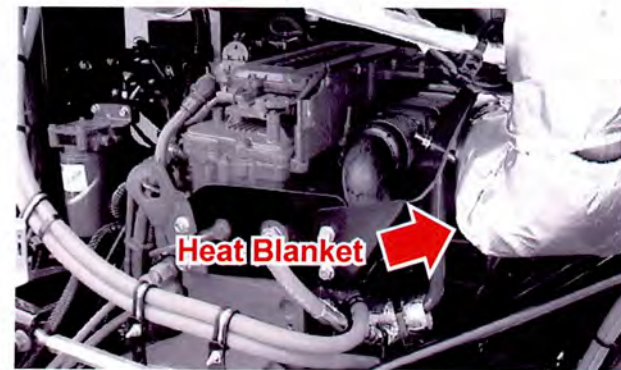


Figure 9

12. Lower the cab.
13. Installation is complete.



SP 2-235-001
SERVICE PROGRAM

January, 2012

5VCACL8F8AH210941	5VCACD8F1AH211077	5VCACD8G7AH211285	5VCACL8F3AH211401
5VCACS8F7AH210942	5VCACD8F3AH211078	5VCACD8F5AH211292	5VCACL8F5AH211402
5VCACS8F9AH210943	5VCACD8F5AH211079	5VCACD8F7AH211293	5VCACL8F7AH211403
5VCACL8F8AH211037	5VCACD8F1AH211080	5VCACD8F9AH211294	5VCACL8F9AH211404
5VCACL8FXAH211038	5VCACD8F3AH211081	5VCACD8F0AH211295	5VCACD8F3AH211405
5VCACL8F1AH211039	5VCACD8F5AH211082	5VCACD8F2AH211296	5VCACD8F5AH211406
5VCACL8F8AH211040	5VCACD8F7AH211083	5VCACD8F4AH211297	5VCACD8F7AH211407
5VCACL8FXAH211041	5VCACD8F9AH211084	5VCACD8F6AH211298	5VCACD8F9AH211408
5VCACL8F1AH211042	5VCACD8F0AH211085	5VCACD8F8AH211299	5VCACD8F0AH211409
5VCACL8F3AH211043	5VCACD8F2AH211086	5VCACD8F0AH211300	5VCACD8F7AH211410
5VCACL8F5AH211044	5VCACD8F4AH211087	5VCACD8F2AH211301	5VCACD8F9AH211411
5VCACL8F7AH211045	5VCACD8F6AH211088	5VCACD8F4AH211302	5VCACD8F0AH211412
5VCACL8F9AH211046	5VCACD8F8AH211089	5VCACD8F6AH211303	5VCACD8F2AH211413
5VCACL8F0AH211047	5VCACD8F4AH211090	5VCACD8F8AH211304	5VCACD8F4AH211414
5VCACL8F2AH211048	5VCACD8F6AH211091	5VCACD8FXAH211305	5VCACD8F6AH211415
5VCACL8F6AH211053	5VCACD8F8AH211111	5VCACD8F1AH211306	5VCACD8F8AH211416
5VCACL8F8AH211054	5VCACD8F5AH211132	5VCACS8F7AH211315	5VCACD8FXAH211417
5VCACD8F4AH211056	5VCACD8F7AH211133	5VCACS8F9AH211316	5VCACL8F9AH211418
5VCACD8F6AH211057	5VCACD8F9AH211134	5VCACS8F0AH211317	5VCACL8F0AH211419
5VCACD8F8AH211058	5VCACR8F6AH211153	5VCACS8F2AH211318	5VCACL8F7AH211420
5VCACD8FXAH211059	5VCACL8F7AH211174	5VCACS8F4AH211319	5VCACD8F1AH211421
5VCACD8F6AH211060	5VCACL8F9AH211175	5VCACS8F0AH211320	5VCACD8F3AH211422
5VCACD8F8AH211061	5VCACL8F0AH211176	5VCACS8F2AH211321	5VCACD8F5AH211423
5VCACD8FXAH211062	5VCACL8F2AH211177	5VCACS8F4AH211322	5VCACD8F7AH211424
5VCACD8F1AH211063	5VCACL8F4AH211178	5VCACS8F6AH211323	5VCACD8F9AH211425
5VCACD8F3AH211064	5VCACL8F6AH211179	5VCACS8F8AH211324	5VCACD8F0AH211426
5VCACD8F5AH211065	5VCACL8F2AH211180	5VCACD8F5AH211325	5VCACD8F2AH211427
5VCACD8F7AH211066	5VCACL8F4AH211181	5VCACD8F7AH211326	5VCACD8F4AH211428
5VCACD8F9AH211067	5VCACL8F6AH211182	5VCACD8F9AH211327	5VCACD8F6AH211429
5VCACD8F0AH211068	5VCACL8F8AH211183	5VCACD8F0AH211328	5VCACD8F2AH211430



SP 2-235-001
SERVICE PROGRAM

January, 2012

5VCACD8F3AH211436	5VCACD8F2AH211489	5VCACL8F1BH211950	5VCACL8F3BH212050
5VCACD8F5AH211437	5VCACS8F3AH211490	5VCACS8F0BH211951	5VCACL8F5BH212051
5VCACD8F7AH211438	5VCACS8F5AH211491	5VCACS8F2BH211952	5VCA3L7E5BH212057
5VCACD8F9AH211439	5VCA3L8F3AH211513	5VCACS8F4BH211953	5VCA3R7F4BH212059
5VCACD8F5AH211440	5VCACS8F3AH211537	5VCACD8F7BH211960	5VCACR8F2BH212060
5VCACD8F7AH211441	5VCACL7E7AH211569	5VCACD8F9BH211961	5VCACL8FXBH212062
5VCACD8F9AH211442	5VCACL8F1BH211625	5VCACD8F0BH211962	5VCACL8F7BH212066
5VCACD8F0AH211443	5VCA3L8F3BH211626	5VCACL8FXBH211963	5VCA3D8F1BH212067
5VCACD8F2AH211444	5VCA3S7E5BH211663	5VCACL8F1BH211964	5VCA3L7E1BH212069
5VCACD8F4AH211445	5VCACR8F8BH211690	5VCACL8F3BH211965	5VCACL8F0BH212071
5VCACD8F6AH211446	5VCACR8FXBH211691	5VCACL8F5BH211966	5VCACL8F2BH212072
5VCACD8F8AH211447	5VCACR7F9BH211733	5VCACL8F7BH211967	5VCACL8FXBH212076
5VCACS8F4AH211448	5VCACR7F0BH211734	5VCACL8F9BH211968	5VCACS8F3BH212186
5VCACS8F6AH211449	5VCACR7F2BH211735	5VCACL8F0BH211969	5VCACS8F5BH212187
5VCACS8F2AH211450	5VCACR7F4BH211736	5VCACL8F7BH211970	5VCACS8F7BH212188
5VCACS8F4AH211451	5VCACR7F6BH211737	5VCACL8F9BH211971	5VCACS8F9BH212189
5VCACS8F6AH211452	5VCACR7F8BH211738	5VCACL8F0BH211972	5VCACS8F5BH212190
5VCACS8F8AH211453	5VCACR7FXBH211739	5VCACL8F4BH211974	5VCACS8F7BH212191
5VCACL8F2AH211454	5VCACL7F7BH211775	5VCACL8F6BH211975	5VCACS8F0BH212243
5VCACL8F4AH211455	5VCACL7F9BH211776	5VCACD8F9BH211989	5VCACL8F4BH212302
5VCACL8F6AH211456	5VCACL7F0BH211777	5VCACD8F6BH212002	
5VCACD8F0AH211457	5VCACL7F2BH211778	5VCACD8F8BH212003	
5VCACD8F2AH211458	5VCACL7F0BH211780	5VCACD8FXBH212004	
5VCACD8F4AH211459	5VCACL7F2BH211781	5VCACD8F1BH212005	
5VCACD8F0AH211460	5VCACL7F4BH211782	5VCACD8F3BH212006	
5VCACD8F2AH211461	5VCACD8F1BH211839	5VCACD8F5BH212007	
5VCACD8F4AH211462	5VCACR8F1BH211840	5VCACD8F7BH212008	
5VCACD8F6AH211463	5VCACR8F3BH211841	5VCACD8F9BH212009	
5VCACR8F1AH211481	5VCACR8F5BH211842	5VCACD8F5BH212010	
5VCACR8F3AH211482	5VCACR8F7BH211843	5VCACD8F7BH212011	