



File In Section: Service Bulletin

Bulletin No.: PIC5327A

Date: December, 2010

PRELIMINARY INFORMATION

Subject: Service Engine Soon light on

Models: 2010-2011 Buick LaCrosse

With any of the following DTCs: P0087 P0089 P00C6 P018B P018C P018D P0231
P0232 P023F P025A P0442 P0446 P0449 P0450 P0451 P0452 P0453 P0454 P0455
P0461 P0462 P0463 P0464 P0498 P0499 P0641 P0642 P0643 P064A P069E
P1255 P2066 P2067 P2068 P2635 U0109

This PI was superseded to update keywords, model years and title. Please discard
PIC5327.

The following diagnosis might be helpful if the vehicle exhibits the symptom(s) described in this PI.

Condition/Concern:

Concern:

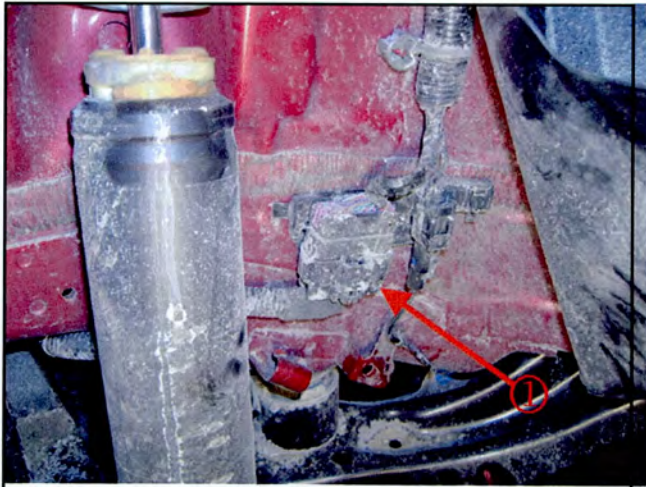
Customer complains about a Service Engine Soon light on intermittently.

Cause

Further investigation may reveal a possible corrosion at Connector X403. (behind the right rear wheel well liner)

Recommendation/Instructions:

Remove the wheel well liner, inspect for corrosion at connector and repair/replace as needed. Once repairs have been made to the connector, pack connection with die-electric grease.



2394690

Please follow this diagnostic or repair process thoroughly and complete each step. If the condition exhibited is resolved without completing every step, the remaining steps do not need to be performed.