



Service Bulletin

File in Section: -

Bulletin No.: PI0672A

Date: September, 2012

PRELIMINARY INFORMATION

Subject: Wind Noise from Rear Side Door Stationary Window

Models: 2011-2013 Buick Regal

This PI is being revised to add the 2013 model year. Please discard PI0672.

The following diagnosis might be helpful if the vehicle exhibits the symptom(s) described in this PI.

Condition/Concern

Some customers may comment on hearing a wind noise coming from the left or right rear side door stationary window.

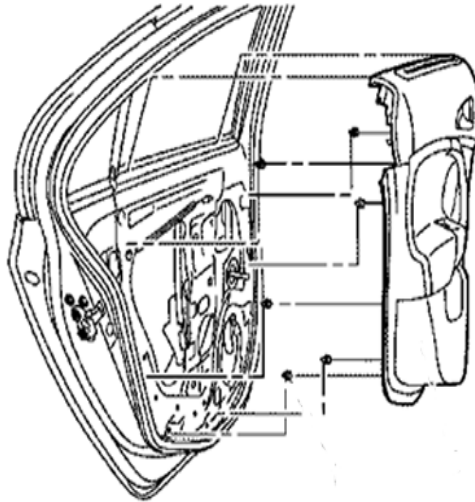


2767628

The cause of this condition may be that the vertical channel on the stationary window assembly is loose or positioned low, not allowing the top of the channel to properly tuck under the upper seal flange. An example of this condition is shown circled in the graphic above.

Recommendation/Instructions

Reposition the vertical channel on the stationary window assembly by following the steps below:



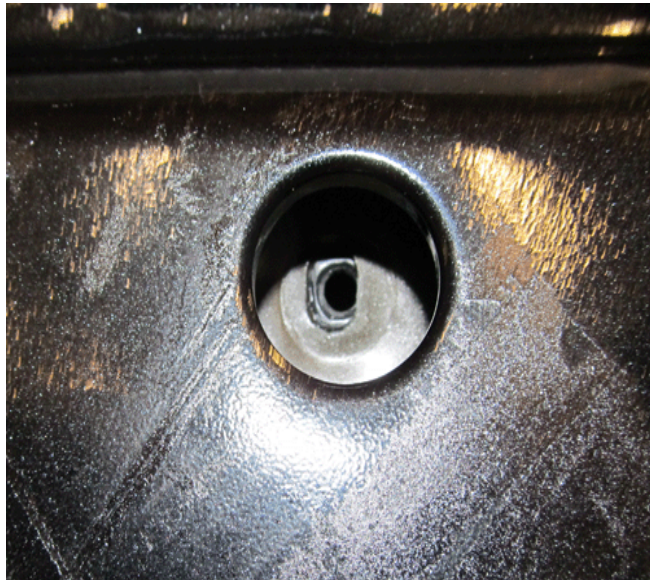
2767638

1. Remove the trim panel on the affected door. Refer to Rear Side Door Trim Panel Replacement in SI.



2767642

2. Peel back the upper rear corner of the rear side door water deflector to access the stationary window channel rear retaining bolt (1).
3. Remove the stationary window channel rear retaining bolt.



2767646

Note: The hole in the window channel bracket is slightly oblong in the vertical direction. Minor adjustment can be attained by raising/lowering the bracket position in relation to the hole in the sheet metal.



2767649

4. Reaching into the door, push the window channel upward so the bracket hole opening is in its highest position to still install the retaining bolt.
5. Holding the channel in position, reinstall the retaining bolt.

Tighten

Tighten the bolt to 10 N•m (89 lb in).



2767651

6. Ensure the window channel is tucked under the upper seal flange and that the rear door glass is traveling properly.
7. Reposition the water deflector and reinstall the trim panel. Refer to Rear Side Door Trim Panel Replacement in SI.

Warranty Information

For vehicles repaired under warranty, use:

Labor Operation	Description	Labor Time
C9508*	Reposition Rear Side Door Stationary Window Channel	0.4 hr
*This is a unique labor operation for bulletin use only. It will not be published in the Labor Time Guide.		