



Service Bulletin

File in Section: -

Bulletin No.: PIC5598H

Date: September, 2012

PRELIMINARY INFORMATION

Subject: Guidelines For NJ1 Power Steering Powerpack (Module) Replacement And Parts Restriction Instructions

Models: 2011 - 2013 Chevrolet Cruze
2010 - 2013 Chevrolet Equinox
2011 - 2013 Chevrolet Volt
2010 - 2013 Buick LaCrosse
2011 - 2013 Buick Regal
2012 - 2013 Buick Verano
2010 - 2013 GMC Terrain
2013 Chevrolet Malibu Eco

This PI was superseded to update DTC information, model and model years. Please discard PIC5598G.

The following diagnosis might be helpful if the vehicle exhibits the symptom(s) described in this PI.

Condition/Concern:

Condition: A technician may question if he should replace an Electronic Power Steering Gear Assembly or Powerpack (Module) Only. The following Powerpack (module) part numbers 13286690, 13365402, 13394025 and 19117588 are on restriction through the GM TAC (Technical Assistance Center). If there is no High Speed LAN Communication or Data cannot be accessed with GDS2 a New Power Steering Gear Assembly will be needed.

Recommendation/Instructions:

The following DTCs are the only reason it would be necessary to replace an NJ1 Powerpack (Module).

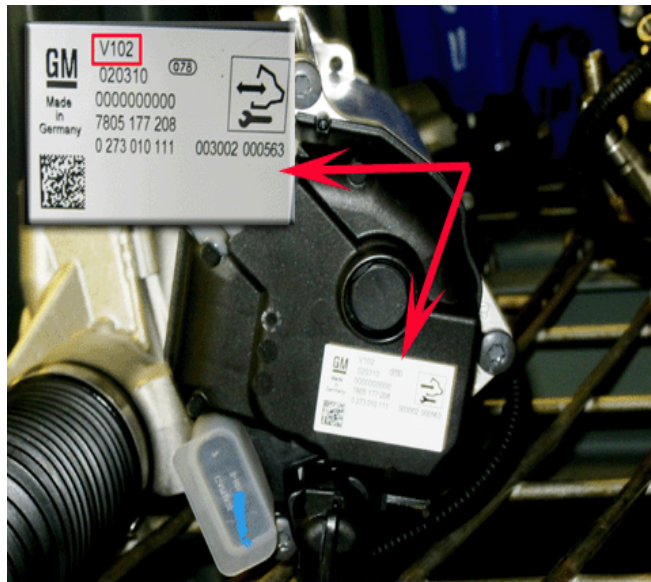
C0475_00 – Electric Power Steering Motor Circuit Fault

For other DTCs please review the latest version of PIT5063A for additional diagnostic tips.

Note: These codes indicate that the Powerpack (Module) should be replaced.

If it is necessary to replace the Powerpack (Module) check the white tag on the black plastic cover of the Powerpack that will have a 4 digit code 1 letter followed by 3 numbers.(example E103) This code is necessary to order correct replacement part. Contact General Motors Technical Assistance to confirm diagnosis and order a new Powerpack (Module). One of the part numbers listed below will be needed.

Code	Part Number
E103	13286690
E121	13365402
E131	13394025
V102	19117588



2742257

Please follow this diagnostic or repair process thoroughly and complete each step. If the condition exhibited is resolved without completing every step, the remaining steps do not need to be performed.