

# Technical Bulletin



---

Model(s)	Year	Eng. Code	Trans. Code	VIN Range From	VIN Range To
CC, Passat CC	2009	All	All	3C_9E000001	3C_9E560000

## Condition

**58 12 05** November 2, 2012 **2021668** Supersedes T. B. V580902 dated October 5, 2009 to update water test labor operation.

### Rear Doors, Outer Seal, Water Retention at Sill Plate

Rear door seals are retaining water until door is open.

## Technical Background

Water is collecting between lower door seal and lower body seal of the rear doors.

## Production Solution

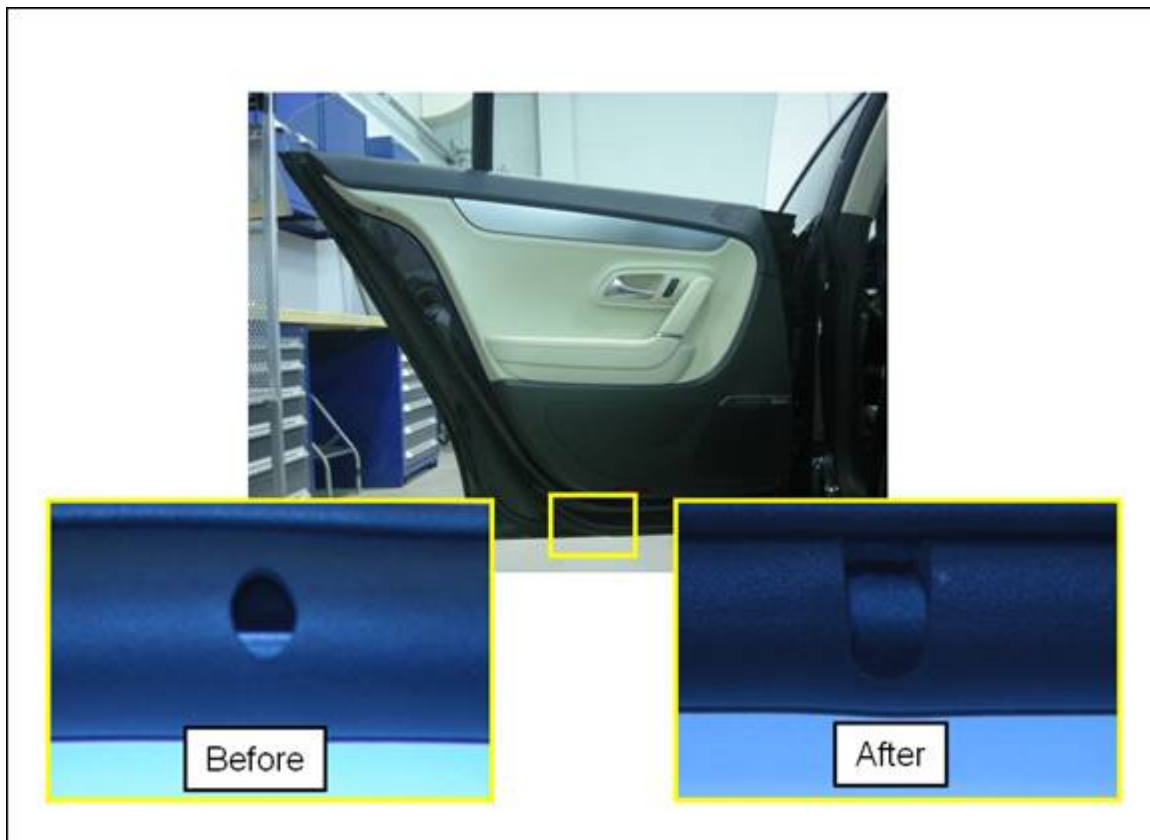
New design rear outer door seals.



## Service

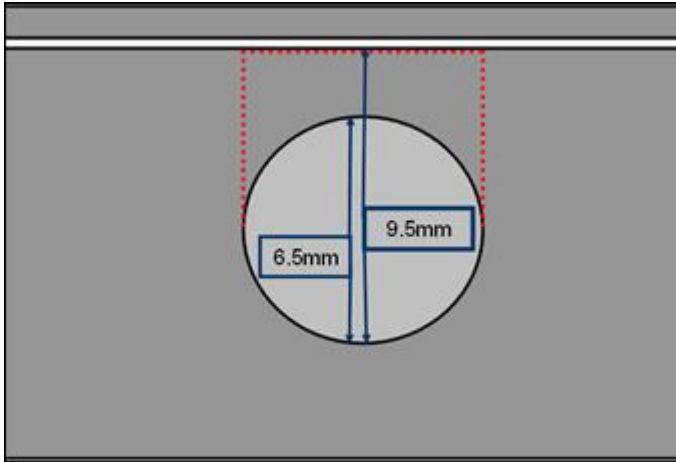
Water test vehicle and verify that water is collecting in the rear door area. If an abnormal amount of water is spilled out when the door is opened, continue with the steps below.

1. Locate rear door outer seal inner drain hole, see photo below.





2. Elongate drain hole in rear door outer seal using scissors or side cutters from 6.5mm round opening to a 9.5mm squared off opening, see photo below.



3. Water test vehicle after seal modification and verify vehicle is not retaining an abnormal amount of water in the rear door area.
4. If an abnormal amount of water is spilled out after seal modification, replace rear door outer seal. Refer to Repair Manual Group 58, *Rear Doors, Removal and Installation, Rear Door Components*.

# Technical Bulletin



## Warranty

To determine if this procedure is covered under Warranty, always refer to the Warranty Policies and Procedures Manual <sup>1)</sup>					
Model(s)	Year(s)	Eng. Code(s)	Trans. Code(s)	VIN Range From	VIN Range To
CC, Passat CC	2009	All	All	3C_9E000001	3C_9E560000
Claim Type:			Use applicable Claim Type <sup>1)</sup>		
<b>SAGA Coding</b>					
Service Number:	Damage Code	HST	Damage Location (Depends on Service No.)	Parts Manufacturer (removed part)	
5864	0010	--	Use applicable when indicated in ElsaWeb (L/R)	G G E <sup>2)</sup>	
Labor Operation <sup>3)</sup> : Repair 1 - Rework outer rear door seals			58644299 = 20 TU		
Labor Operation <sup>3)</sup> : Repair 2 - Replace one rear door seal			58641900 = 40 TU		
Labor Operation <sup>3)</sup> : Repair 2 - Replace both rear door seals			58642000 = 70 TU		
<b>Diagnostic Time <sup>4)</sup></b>					
GFF Time expenditure	01500000 = 00 TU max.			NO	
Road Test	01210002 & 01210004			NO	
Technical Diagnosis	01320000 = 10 TU max. Water Test			YES	
Claim Comment: Input "As per Technical Bulletin 2021668" in comment section of Warranty Claim.					
<sup>1)</sup> Vehicle may be outside any Warranty in which case this Technical Bulletin is informational only <sup>2)</sup> Code per warranty vendor code policy. <sup>3)</sup> Labor Time Units (TUs) are subject to change with ELSA updates. <sup>4)</sup> Documentation required per Warranty Policy & Procedures Manual.					

# Technical Bulletin



---

## Required Parts and Tools

Part Description	Part No:	Quantity
Outer Door Seal	3C8 839 701 B 5AP (includes both rear door seals)	2 maximum

No Special Tools required.

## Additional Information

All part and service references provided in this Technical Bulletin are subject to change and/or removal. Always check with your Parts Dept. and Repair Manuals for the latest information.