



SERVICE BULLETIN

Classification: EL12-069	Reference: NTB12-115	Date: December 14, 2012
-----------------------------	-------------------------	----------------------------

2011 - 2013 JUKE; BATTERY LOW VOLTAGE / NO START

APPLIED VEHICLE: 2011 - 2013 Juke (F15)

APPLIED VINs and

DATES: 2WD vehicles built before JN8AF5MR(*)DT 206254 and Oct 29, 2012

AWD vehicles built before JN8AF5MV(*)DT 211516 and Oct 29, 2012

IF YOU CONFIRM:

An Applied Vehicle has a “battery low voltage” or “no start condition”.

NOTE: A battery low voltage condition may cause an engine “no crank” or “no start” condition.

ACTION:

1. Confirm this bulletin applies (see the **Repair Overview** flowchart on page 3).
2. If this bulletin applies, use the **Repair Overview** flowchart on page 3 to determine which repair procedures to apply to your vehicle.

IMPORTANT: The purpose of **ACTION** (above) is to give you a quick idea of the work you will be performing. You **MUST** closely follow the entire **Repair Overview** as it contains information that is essential to successfully completing this repair.

Nissan Bulletins are intended for use by qualified technicians, not 'do-it-yourselfers'. Qualified technicians are properly trained individuals who have the equipment, tools, safety instruction, and know-how to do a job properly and safely. NOTE: If you believe that a described condition may apply to a particular vehicle, DO NOT assume that it does. See your Nissan dealer to determine if this applies to your vehicle.

PARTS INFORMATION

DESCRIPTION	PART NUMBER	QUANTITY
Battery (GR35-series)	999M1-NB35C	1 (if needed)

CLAIMS INFORMATION

Submit a Primary Part (PP) type line claim using the following claims coding.

For ECM reprogramming

DESCRIPTION	PFP	OP CODE	SYM	DIA	FRT
Reprogram ECM	(1)	DE97AA	ZE	32	(2)

(1) Use C-III plus to obtain the current ECM Part Number from the vehicle and use it as the PFP.

(2) Reference the current Nissan Warranty Flat Rate Manual and use the indicated flat rate time.

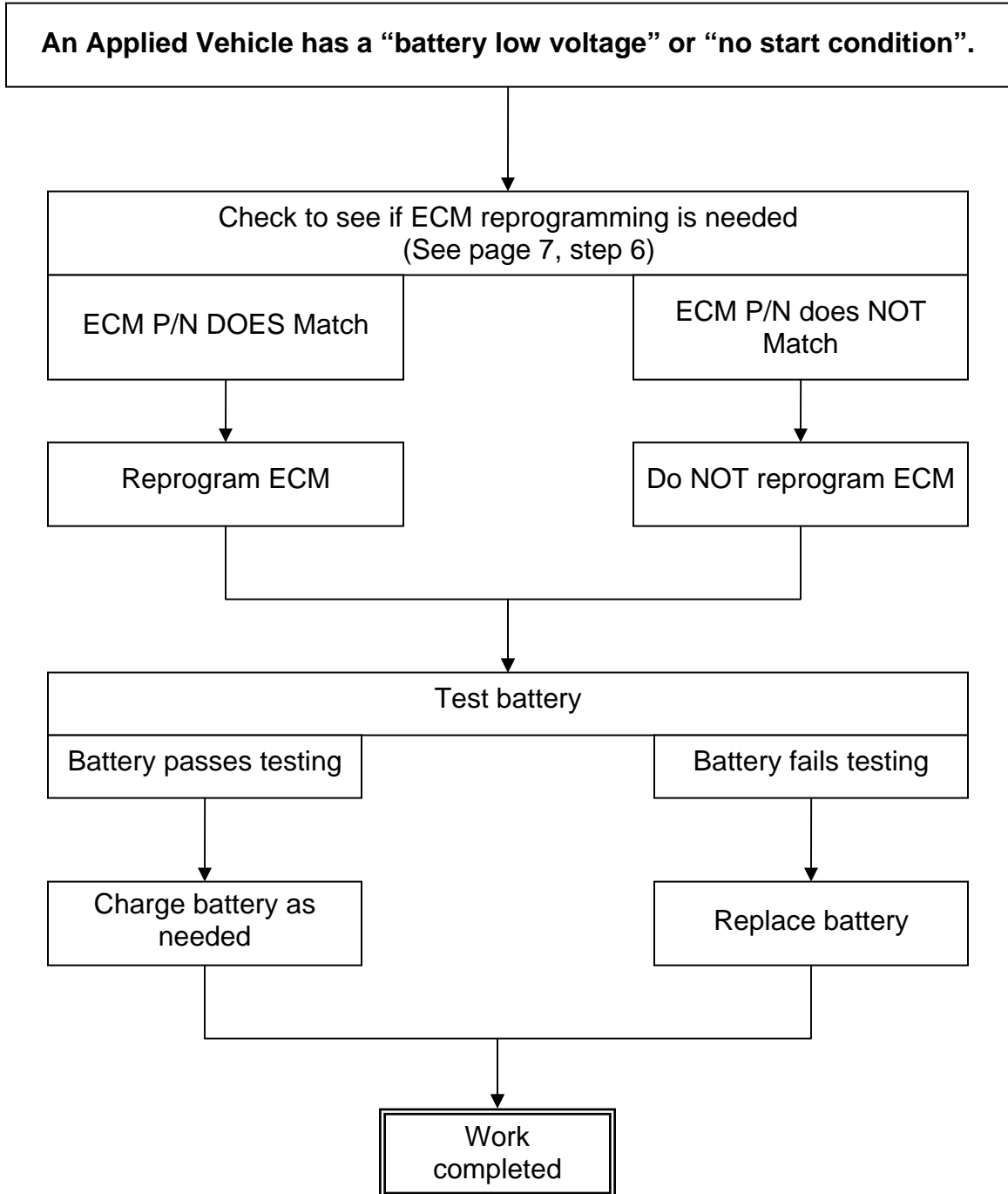
AND if needed

On the same repair line

DESCRIPTION	OP CODE	FRT
TEST & CHARGE BATTERY	GB18AA	(1)
ADD TO GB18AA FOR RPL BATTERY	GB181A	(1)

(1) Reference the current Nissan Warranty Flat Rate Manual and use the indicated flat rate time.

Repair Overview



SERVICE PROCEDURE

- Most instructions for reprogramming with CONSULT-III plus (C-III plus) are displayed on the CONSULT PC screen.
- If you are not familiar with the reprogramming procedure, click here. This will link you to the "CONSULT- III plus (C-III plus) Reprogramming" general procedure.

Preparation for Reprogramming

- Take the vehicle for a 10 minute drive in order to meet the following Idle Air Volume Learn (IAVL) conditions:
 - Engine coolant temperature: 70 - 100°C (158 - 212°F)
 - Battery voltage: More than 12.9V (At idle)
 - Transmission: Warmed up



Figure A

NOTE:

- After ECM reprogramming is complete, you will be required to perform Throttle Valve Closed Position, Idle Air Volume Learn (IAVL), and Accelerator Closed Position.
- The above conditions are required for the IAVL to complete.

CAUTION:

- Connect a battery charger to the vehicle battery. The vehicle battery voltage must stay between 12.0V and 15.5V during reprogramming, or the ECM may be damaged.
- Be sure to turn OFF all vehicle electrical loads. If a vehicle electrical load remains ON, the ECM may be damaged.
- Be sure to connect the AC Adapter. If the CONSULT PC battery voltage drops during reprogramming, the process will be interrupted and the ECM may be damaged.
- Turn off all external Bluetooth® devices (e.g., cell phones, printers, etc.) within range of the CONSULT PC and the VI. If Bluetooth® signal waves are within range of the CONSULT PC during reprogramming, reprogramming may be interrupted and the ECM may be damaged.

1. **Connect the CONSULT PC** to the vehicle to begin the reprogramming procedure.
2. Open ASIST on the CONSULT PC and start C-III plus.
3. Wait for the plus VI to be recognized / connected.
 - The serial number will display when the plus VI is recognized / connected.
4. Select **Re/programming, Configuration**.

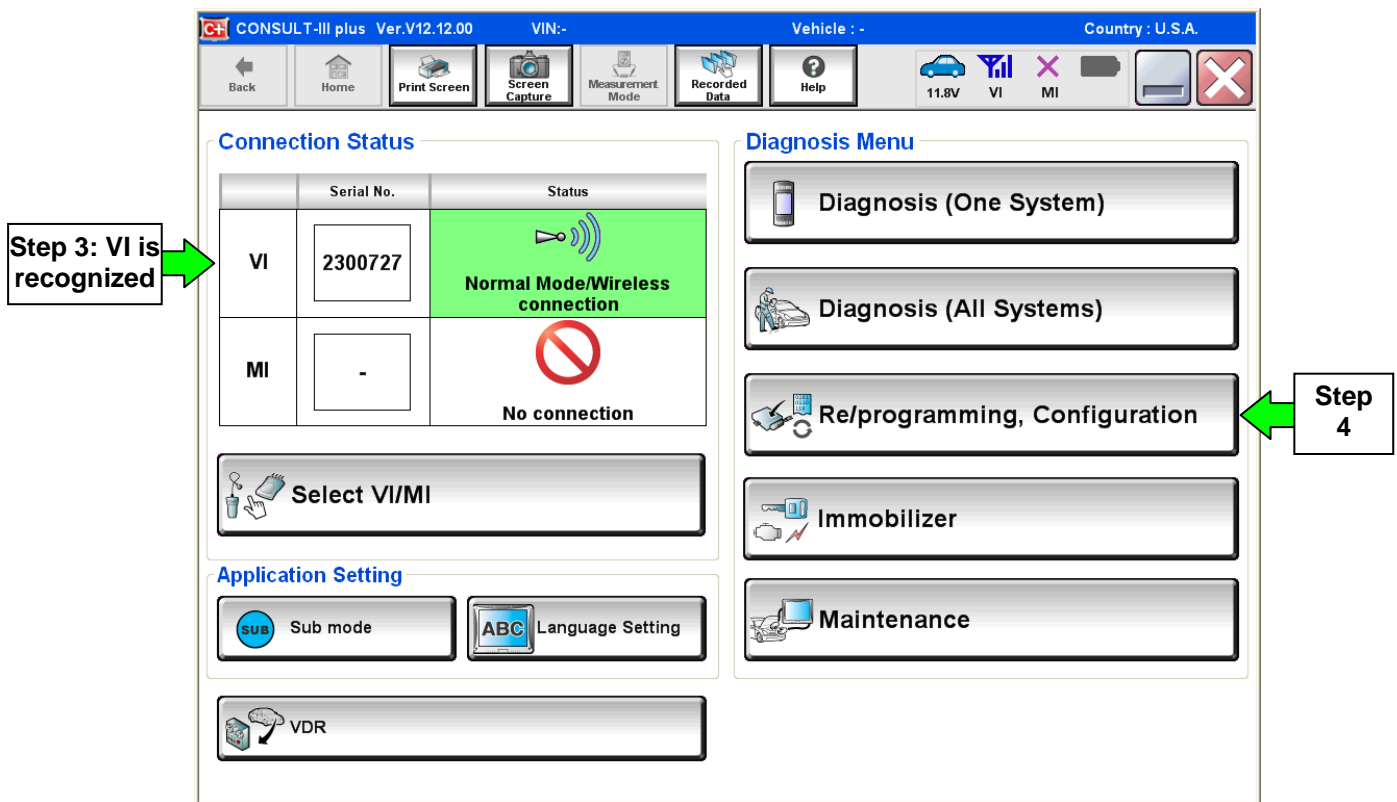


Figure 1

5. Follow the C-III plus on-screen instructions and navigate to the screen shown in Figure 2 on the **next page**.

IMPORTANT:

While navigating C-III plus, if the screen in Figure 1A displays, select **Delete**, and then **Other Operation**.

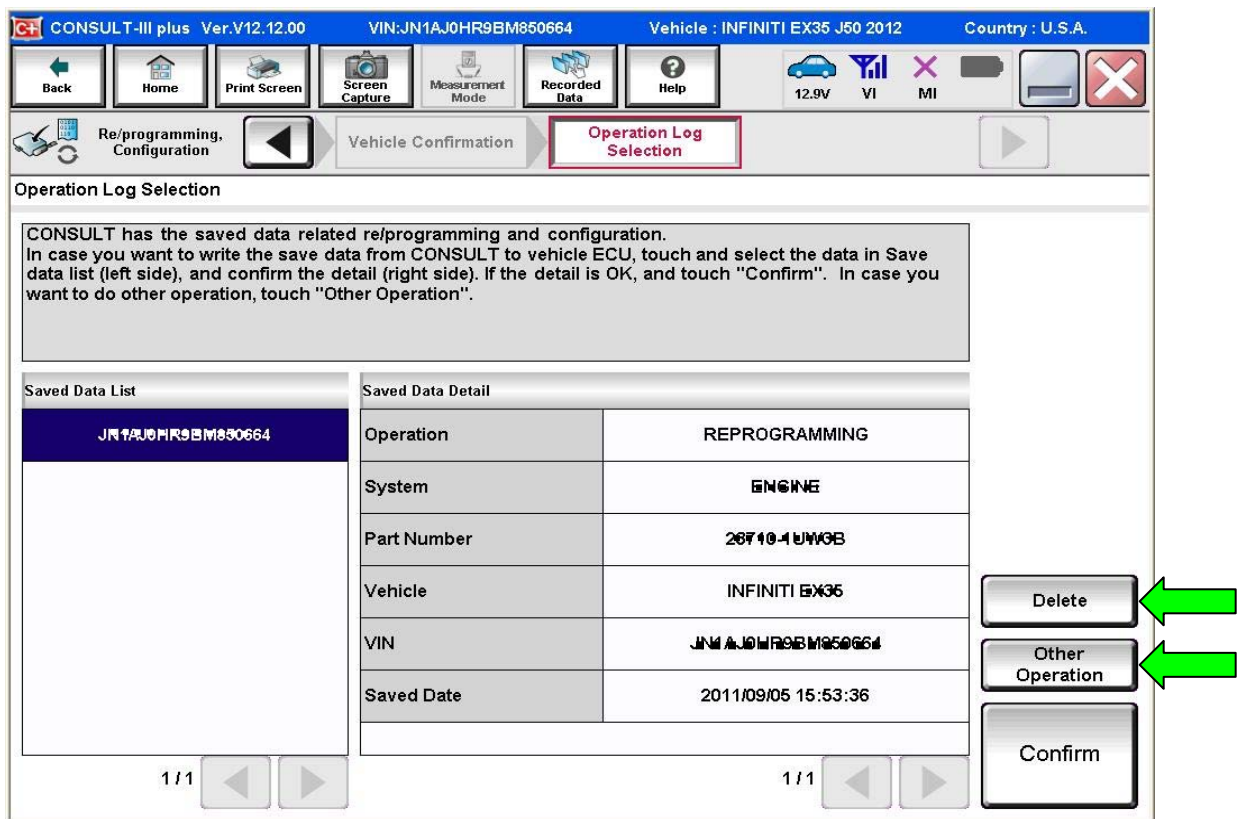


Figure 1A

6. When you get to the screen shown in Figure 2, confirm this bulletin applies as follows:
- A. Find the ECM **Part Number** and write it on the repair order.

NOTE: This is the current ECM Part Number (P/N).

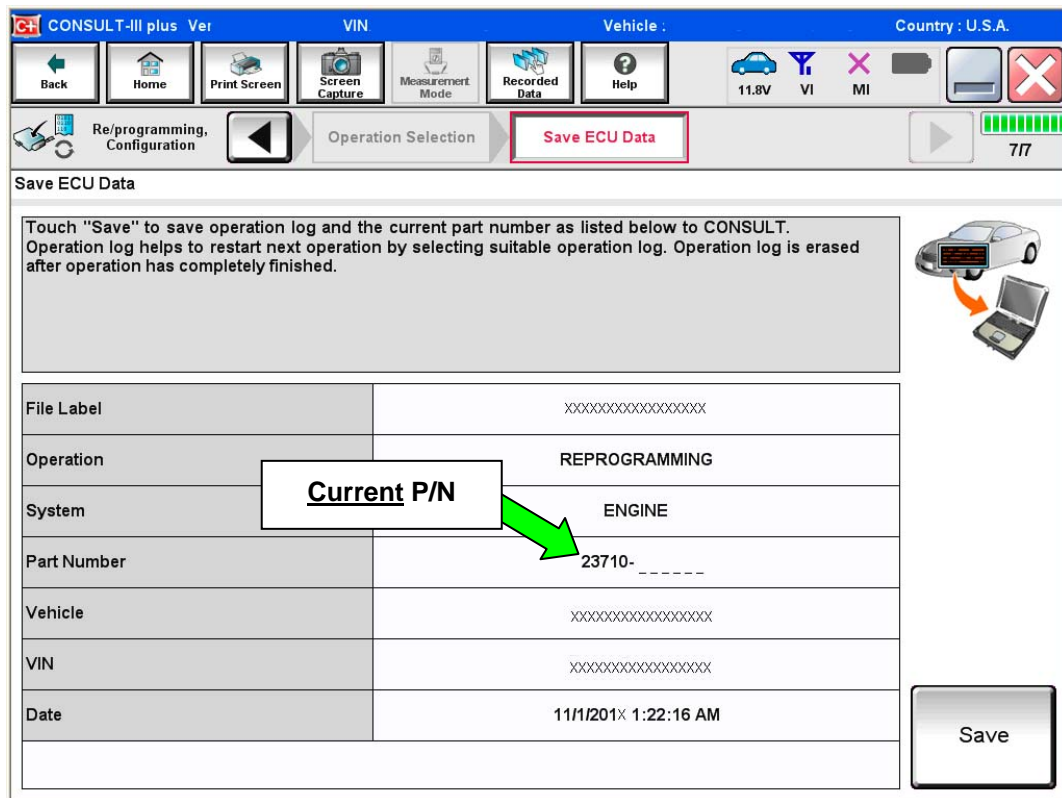


Figure 2

- B. Compare the P/N you wrote down to the numbers in the **Current ECM Part Number** column in **Table A** (see next page).
 - If there is a match, this bulletin applies. Continue with the reprogramming procedure.
 - If there is not a match, this bulletin does not apply. Close C-III plus and refer to ASIST for further diagnostic information.

Table A

Model	Current ECM P/N: 23710 -
2011 Juke	1KC6A, 1KC7A, 1KC8A, 1KC9A
	1KC6B, 1KC7B, 1KC8B, 1KC9B
	1KC6C, 1KC7C, 1KC8C, 1KC9C
	1KC6E, 1KC7E, 1KC8E, 1KC9E
	1KJ0A, 1KJ0B, 1KJ0C, 1KJ0E
	1KJ1A, 1KJ1B, 1KJ1C, 1KJ1E
	1ZV0A, 1ZV1A, 1ZV2A, 1ZV3A, 1ZV4A, 1ZV5A, 1ZV6A, 1ZV7A, 1ZV8A, 1ZV9A
	1ZW0A, 1ZW1A
2012 Juke	1TV0A, 1TV1A, 1TV2A, 1TV3A, 1TV4A, 1TV5A
	1TV0B, 1TV1B, 1TV2B, 1TV3B, 1TV4B, 1TV5B
	1TV0C, 1TV1C, 1TV2C, 1TV3C, 1TV4C, 1TV5C
	1TU4A, 1TU5A, 1TU6A, 1TU7A, 1TU8A, 1TU9A
	1TV0D, 1TV1D, 1TV2D, 1TV3D, 1TV4D, 1TV5D
	1TV2E, 1TV3E, 1TV4E, 1TV5E
2013 Juke	1JU0A, 1JU1A, 1JU2A, 1JU3A, 1JU4A, 1JU5A

8. When the screen in Figure 4 displays, reprogramming is complete.

NOTE: If the screen in Figure 4 does not display (reprogramming does not complete), refer to the information on the next page.

9. Disconnect the battery charger from the vehicle.

10. Select **Next**.

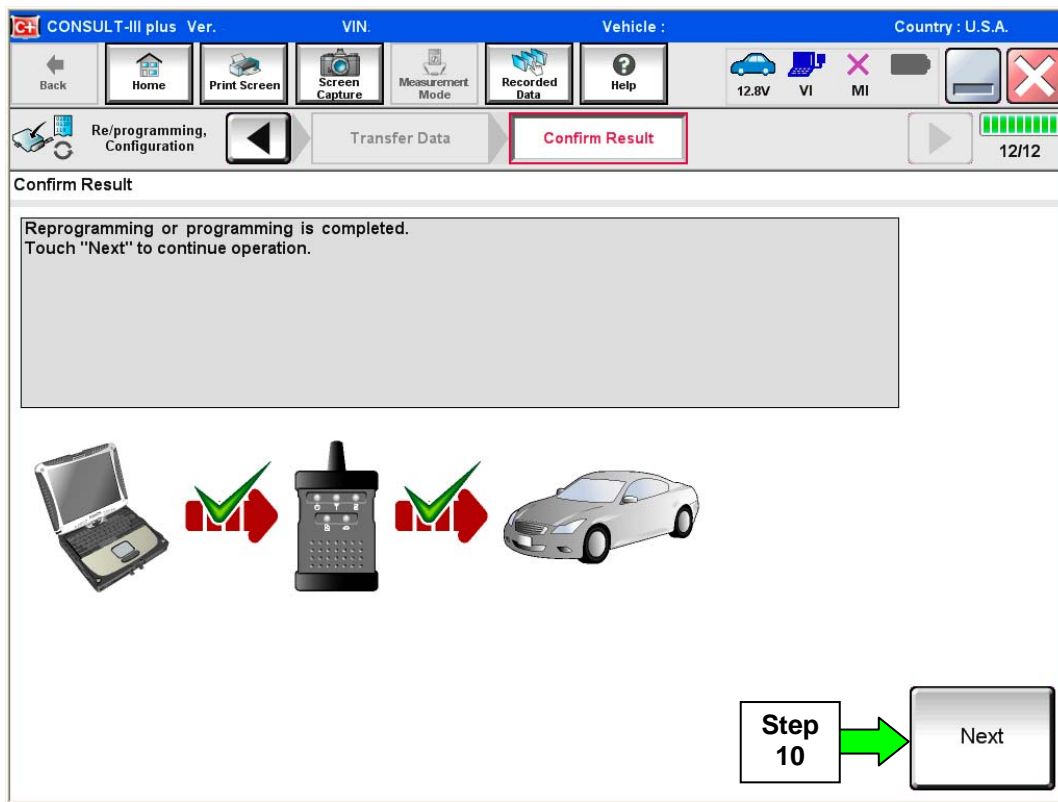


Figure 4

NOTE:

- In the next steps (page 12), you will perform Throttle Valve Closed Position, Idle Air Volume Learn, Accelerator Closed Position, and DTC erase.
- These operations are required before C-III plus will provide the final reprogramming confirmation report.

ECM Recovery

Do not disconnect plus VI or shut down C-III plus if reprogramming does not complete.

If reprogramming does not complete and the “!” icon displays as shown in Figure 5:

- Check battery voltage (12.0 -15.5 V).
- Ignition is ON, engine OFF.
- External Bluetooth® devices are OFF.
- All electrical loads are OFF.
- **Select retry and follow the on screen instructions.**
- “Retry” may not go through on first attempt and can be selected more than once.

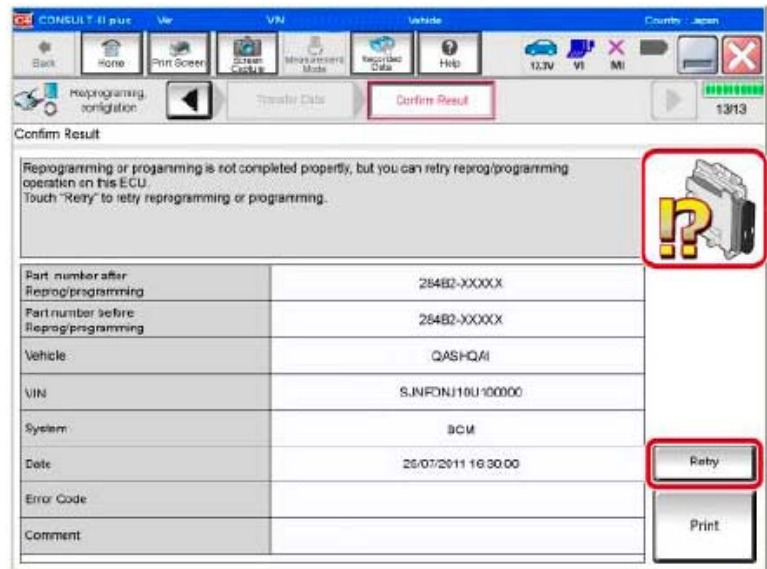


Figure 5

If reprogramming does not complete and the “X” icon displays as shown in Figure 6:

- Check battery voltage (12.0 -15.5 V).
- CONSULT A/C adapter is plugged in.
- Ignition is ON, engine OFF.
- Transmission is in Park.
- All C-III plus / VI cables are securely connected.
- All C-III plus updates are installed.
- **Select Home, and restart the reprogram procedure from the beginning.**

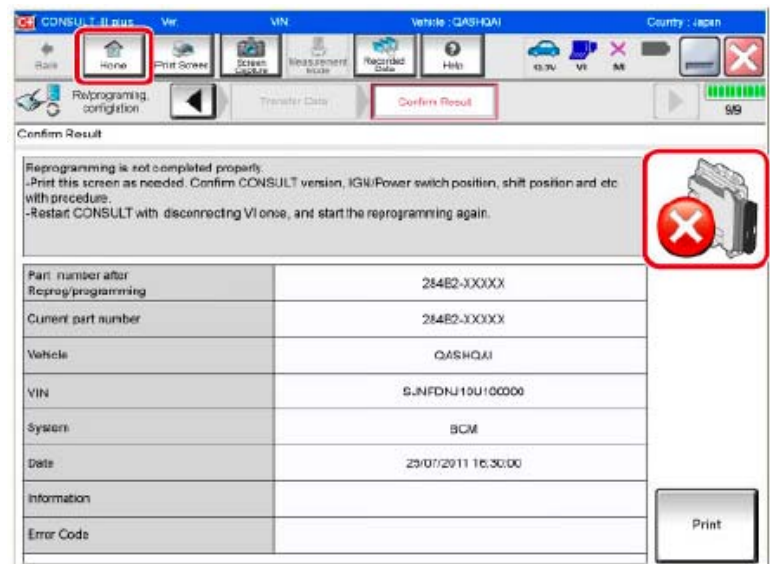


Figure 6

11. Follow the on-screen instructions to perform the following:

- **Throttle Valve Closed Position**
- **Idle Air Volume Learn (IAVL)**

NOTE:

- **Listed below are the conditions required for IAVL to complete.**
- **If IAVL does not complete within a few minutes, a condition may be out of range.**
 - Engine coolant temperature: 70 -105° C (158 - 221°F)
 - Battery voltage: More than 12.9V (At idle)
 - Selector lever: P or N
 - Electric load switch: OFF (Air conditioner, headlamp, rear window defogger)
 - Steering wheel: Neutral (Straight-ahead position)
 - Vehicle speed: Stopped
 - Transmission: Warmed up (ATF TEMP SE less than 0.9V)

- **Accelerator Pedal Close Position Learning**
- **Erase DTCs**

Continue to the next page.

- 12. When the entire reprogramming process is complete, the screen in Figure 7 will display.
- 13. Verify the before and after part numbers are different.
- 14. Print a copy of this screen (Figure 7) and attach it to the repair order for warranty documentation.
- 15. Select **Confirm**.

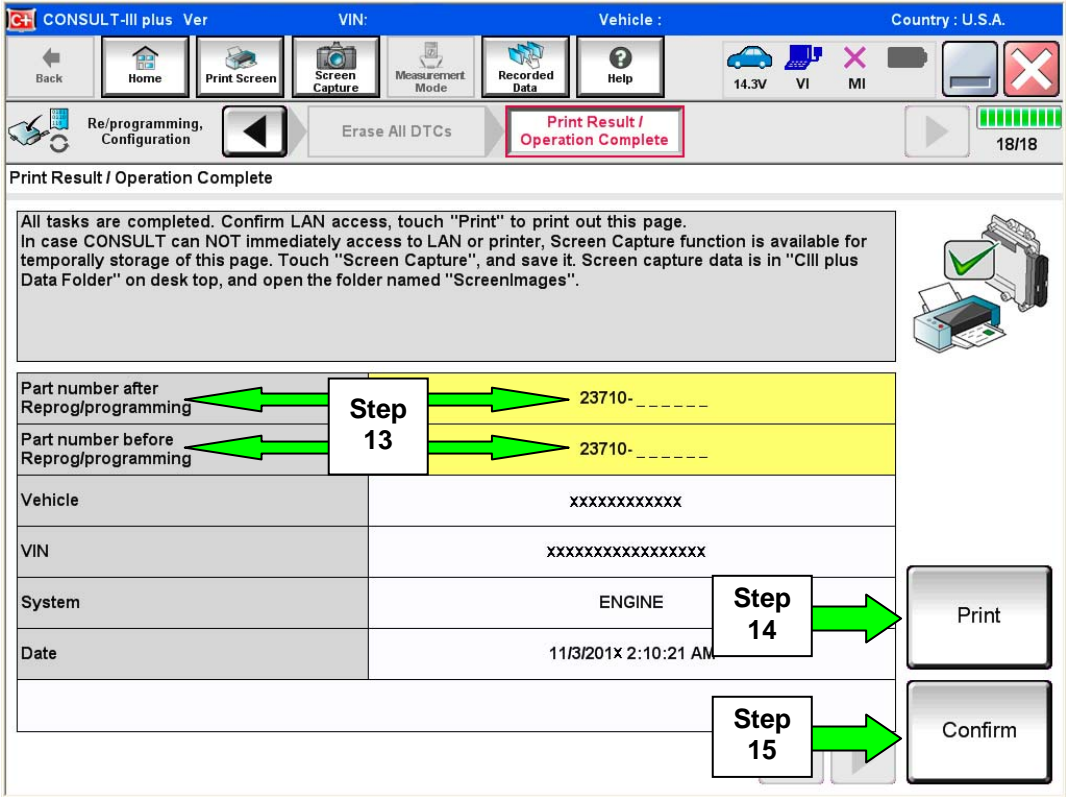


Figure 7

- 16. Close C-III plus.
- 17. Turn the ignition OFF.

Continue to the next page.

BATTERY TESTING AND FINAL PROCESSES

1. Test the battery with the GR8 Multitasking Battery Diagnostic Station (battery tester).
 - If the battery passes testing, charge the battery if required by the battery tester.
 - If the battery does not pass testing, replace it with the one listed in **PARTS INFORMATION**.
 - Make sure the replacement battery is fully charged and ready for service before releasing the vehicle to the customer.
 - Reset / Re-initialize the Clock, Radio Presets, Power Windows, etc. (Refer to **ADDITIONAL SERVICE WHEN REMOVING BATTERY NEGATIVE TERMINAL** in the **GI** section of the ESM for details).

2. Test drive the vehicle. Make sure it operates correctly and the MIL is OFF.
 - If the MIL comes ON, refer to ASIST and / or the ESM for further diagnostic information.
 - Diagnosis and repairs beyond the ones described in the **Repair Overview** are not covered by this bulletin.

