

Vendor:

Alcoa Wheels

Vendor Information

Alcoa Wheel and Transportation Products, a business unit of Alcoa Inc., serves the transportation market in many ways. Aluminum is the preferred material for lightweight, strength and durability in components throughout the vehicle. Manufacturers, builders and drivers of automobiles, light trucks, trailers, RVs, buses, heavy trucks and other applications look to the advantages of Alcoa aluminum products and components to meet performance and efficiency needs for their vehicles.

Customer Service & Technical Support

Hino Parts Support Phone: 866-372-4466
Hino Parts Support Email: helpdesk@hino.com
Hino Parts Support Fax: 662-342-3939
Alcoa Wheels Phone: 800-242-9898
Alcoa Wheels Email: danielle.hurt@alcoa.com
Alcoa Wheels Web: www.alcoawheels.com
Alcoa Wheels Fax: 216-641-5099

Order Procedures:

All orders are to be placed through the Hino Dealer Connect System (DCS). For special orders or for customer support contact Vendor directly via phone number.

Stock Orders Enter orders in DCS Screen DC202 under Sales Type "S". All direct ship items will be shipped from a local Vendor PDC.

Emergency Orders Emergency orders may be entered into DCS screen DC202 as a Sales Type "E" or "V". All emergency orders will be processed with a "rush" order. Freight and Handling fees will be identified on the Hino invoice.

Minimum Order Quantity There is no minimum order requirement on emergency or stock orders.

Freight Policy:

For orders of 1-47 wheels a small freight charge of \$7.00 per wheel will apply (prepaid and added to invoice). All orders are shipped from Mogadore, OH unless otherwise specified. All orders will be shipped via the most efficient method. Accessory orders are shipped freight pre-paid and added to the invoice. Accessories may be added to the order of 48+ wheels the wheels will ship free freight, accessories will ship pre-paid and added to the invoice as they ship from different organization at Alcoa.

Free Freight Policy:

All stock orders will include prepaid freight for quantities of 48 pieces and above for shipments within the Continental United States. A \$7.00 per wheel charge will apply for 1-47 pieces to cover freight (prepaid and added to invoice). Accessories may be added to the order of 48+ wheels, the wheels will ship free freight, accessories will ship pre-paid and added to the invoice as they ship from different organization at Alcoa.

Order Fulfillment Policy:

Consult your Alcoa Customer Service Rep for inventory availability. If no inventory is available, lead-time should not exceed four weeks.

Part Number Pricing:

Pricing will be available on-line in the Hino DCS system. In addition, the prices will be forwarded to your service bureaus within two weeks of each pricing update.

Format:

Standard Part numbers are directly carried over; no prefix or suffix.

Mega Fleet:

All-Makes parts are not included in the Hino Mega Fleet pricing file but should be sold to Mega Fleet customers and filed as Miscellaneous Items in Corcentric when submitting for reimbursement.

Warranty:

Please always view Suppliers warranty documents as warranty varies based on items/products/vehicle applications, etc... Contact vendor directly for a RGA approval number. Warranty covers manufacturers defects only and does not cover damage (installation or progressive). If the vendor provides a RGA number, contact Hino Trucks warranty department. Warranty claims are to be sent back through Hino Trucks corporate.

Returns:

Contact vendor directly to obtain a Return Goods Authorization code by phone number or email address listed above. All returned items MUST have prior approval and the Return Goods Authorization (RGA) marked on the outside of the box. RGAs have an expiration date of sixty (60) days; after sixty (60) days the return will become null and void. All returns are subject to a 25% or greater restocking fee. Will not authorize any returns that are not properly packaged or in the original packaging. No credit will be issued for product that has been damaged, altered, or installed on equipment. The customer is responsible for all freight charges on the returned merchandise. Special order items or non stock items are not returnable.

Shipping Inspection and Damaged Product:

All merchandise should be inspected upon arrival and carrier damage claims should be filed with the carrier immediately. We are not responsible for, nor are we in a position to make a claim after the freight carrier accepts the shipment from us. For excess stock returns, contact the Vendor directly.

Vendor Cross Reference Web Site:

www.alcoawheels.com

Conclusion:

Alcoa Wheels deliver improved productivity and lower lifetime costs.

Alcoa M-Series® Medium Duty Wheels



In A Class By Themselves. Class 6, 5, 4, 3 and 2 That Is.

Leave it to Alcoa to take all of the same strength benefits of forged aluminum wheels for big rigs (Class 7 & 8) and apply them to the light and medium duty truck (Class 2, 3, 4, 5 & 6) segments.

Alcoa M-Series® Medium Duty Wheels:



Lower vehicle lifetime operating costs



Reduce wheel maintenance



Lower fuel expenses



Reduce costs from curbing



Aluminum is the green solution. Add all of the benefits up to lower your operating and maintenance costs!

For industries:

- Towing
- Beverage
- Emergency
- Delivery
- Food processing
- Retail/wholesale
- Utility
- Refuse

For vehicle types:

- Straight trucks
- Strip chassis
- Cutaway chassis
- Conventional cab trucks
- Cab-over trucks
- Commercial vans

For vehicle makes:

- Dodge
- Ford
- Freightliner
- Fuso
- General Motors
- Hino
- International
- Isuzu
- Kenworth
- Peterbilt
- Smith Electric
- Sprinter



DRIVING YOUR BOTTOM LINE.™



WHEEL SPECIFICATIONS



Alcoa aluminum disc wheel mounting dimensions are consistent with SAE Recommended Practice J694 June 2007.

Vehicle applications are subject to model year changes. Prior to mounting tires perform a wheel fitment check to ensure clearance from any obstructions.

	Size	Part Number	Wgt. (lbs)	Featured Vehicle Applications	SURFACE OPTIONS		MOUNTING SYSTEM				OFFSET		LOAD RATING		Inside Dual Wheel Type	Valve stem	Alcoa Mounting Hardware Kits
					Finish Options	Dura-Bright® Options	Bolt Holes	Bolt Circle	Bolt Hole Dia.	Hub Bore	Outset	Inset	Max Load (lbs)	Max Infl. PSI			
Ball Seat	16 x 6J	26000x	19	Isuzu REACH, FE130	0, 3	ODB	6	8.75"	1.28"	6.47"	5.04"	4.41"	3200	95	Aluminum	TR553C	499100 ¹
	17.5 x 6	66313x	25	Hino 155, FE160, FE180	3	-	6	8.75"	1.28"	6.47"	5.35"	4.64"	3860	112	Aluminum	TR553C	499100 ¹
	19.5 x 6	76332x	35	Hino 195, Isuzu NPR & NRR	-	ODB,1DB,2DB	6	8.75"	1.28"	6.46"	5.32"	4.61"	4190	123	Aluminum	TR553C	499100 ¹
Spherical Seat	16 x 6.5J	36070x	21	Sprinter 2500	0, 1	-	6	130mm	15mm	84mm	N/A	54mm	2680	80	N/A	See OEM ²	008415SP
Cone Seat	16 x 6.5J	26190x	21	Ford Transit 250/350 (Single)	0, 1	-	5	160mm	16.5mm	65mm	N/A	60mm	2800	71	N/A	See OEM ²	See OEM
Hub Pilot	16 x 5.5J	25080x	17	Sprinter 3500	0, 1, 2	ODB,1DB,2DB	6	205mm	16mm	161.1mm	125.5mm	115.5mm	2340	80	Aluminum	54MS-00	See OEM
	16 x 6J	26180x	18	Ford Transit 350 HD (Dual)	0, 1, 2	-	6	180mm	23mm	138.8mm	124mm	110mm	2040	55	Steel	TR553C	See Alcoa ³
	16 x 6K	16021x	19	GM Cutaway 3500/4500 (late models)	1, 2	-	8	6.5"	0.67"	4.60"	5.15"	4.59"	2780	95	Steel	TR553C	N/A
	16 x 6K	16028x	20	Ford E-350/450	1, 2	ODB,1DB,2DB	8	6.5"	0.67"	4.88"	5.40"	4.84"	2780	95	Steel	TR553C	139987
	19.5 x 6	76320x	33	F59 (GVWR 16k/19.5k) F-450/550, TerraStar, RAM 4500/5500	0, 1, 2	ODB,1DB,2DB	10	225mm	15mm	170.3mm	136mm	118mm	4000	115	See OEM	TR553C	See OEM
	19.5 x 6	76380x	33	Hino 185	0, 1, 2	-	8	225mm	15mm	170.3mm	136mm	118mm	3750	110	Aluminum	TR553C	N/A
	19.5 x 6.75RW	76542x	31	FCCC MT-45/55, GM Kodiak	0, 1, 2	ODB,1DB,2DB	8	275mm	26mm	221.1mm	141mm	123mm	5000	130	Aluminum	TR553C	See OEM
	19.5 x 6.75RW	76547x	31	Smith Newton Electric	0, 1, 2	ODB,1DB,2DB	8	275mm	24mm	221.1mm	141mm	123mm	5000	130	Steel	TR553C	008200 ¹
	19.5 x 7.5RW	77349x	38	Mack, Peterbilt	0, 1, 2	-	8	275mm	24mm	221.1mm	155mm	134mm	6610	130	Aluminum	TR553C	See OEM
19.5 x 7.5RW	77362x	38	Hino, Peterbilt, Kenworth COE, F-650/750	0, 1, 2	ODB,1DB,2DB	10	285.75mm	26mm	220.1mm	155mm	133mm	6700	130	Aluminum	TR553C	See OEM	

¹ Contains replacement lug nuts, bolts, or studs for one front and one rear axle. Required to accommodate the increased thickness of the mounting surface of aluminum wheels compared to steel wheels

² Valve Stem Not Included. See OEM for valve and TPMS Sensor (separate purchase required)

³ Contact Alcoa at (800)-242-9898 for mounting hardware information



SURFACE OPTION CODES	
0 Brush Finish on both sides as applicable	7 Clean Buff Finish on both sides as applicable
1 Polished Outside Only	8 Clean Buff Finish on both sides. Reference data table for offset position
2 Polished Inside Only	9 Brush Finish on both sides. Reference data table for offset position
3 Polished Both Sides	
DB Dura-Bright® Surface Treatment	DD Dura-Bright® and Dura-Flange® Wear Protection
DF Dura-Flange® Wear Protection	



Wheel Accessory Products Catalog

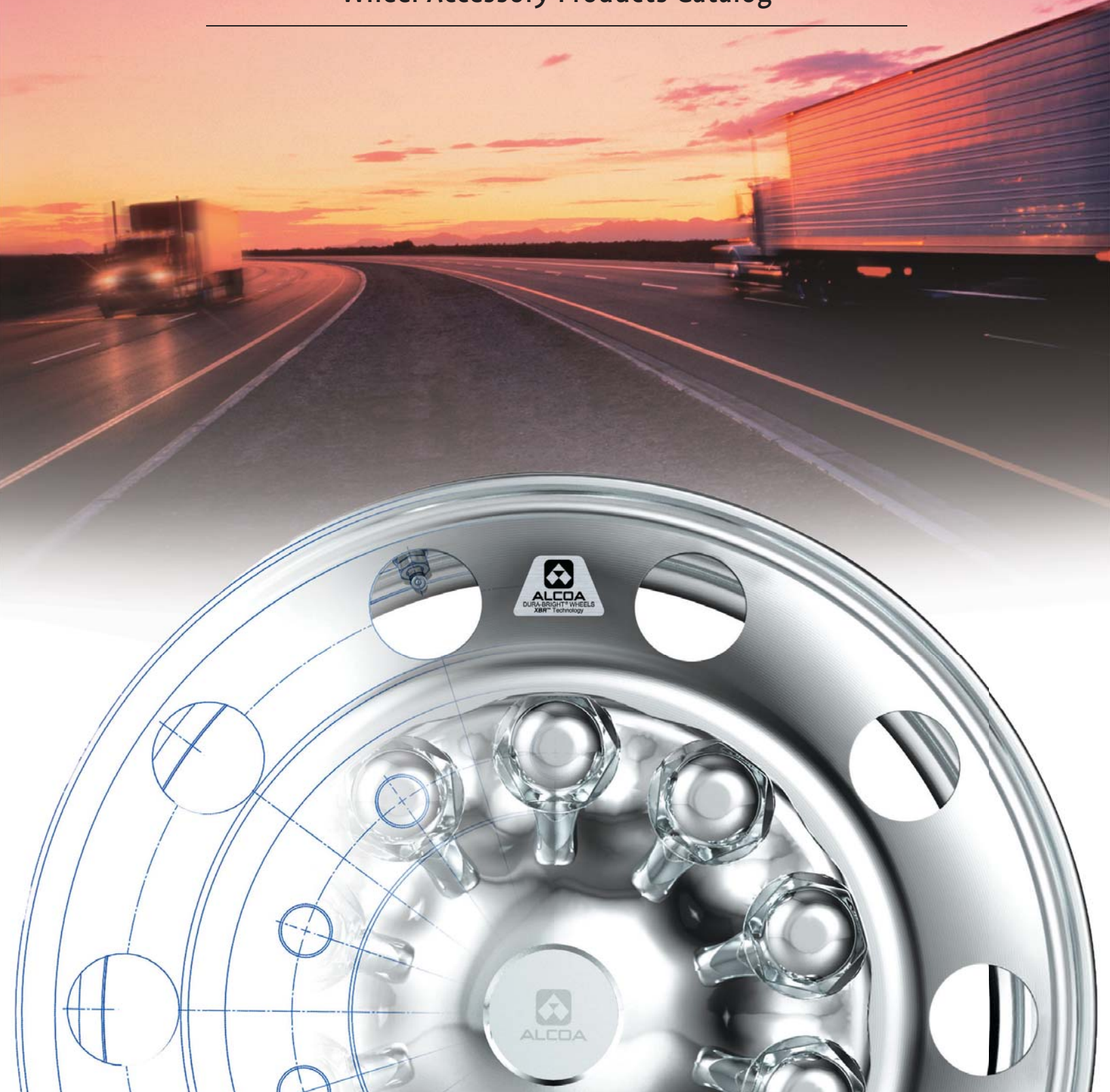


Table of Contents

Heavy Duty Trucks - Chrome Accessories

One-Piece Hub Cover System	2
Alcoa Wheel Kits	3 - 5
Alcoa Hug-A-Lug® Nut Covers.....	5 - 6
Wheel Cap Nuts (Fasteners)	7 - 8

Heavy Duty Trucks - Maintenance

Valve Stems	9
Valve Stem Extension Stabilizers	10
Valve Stem Extension Stabilizer Kits	11
Valve Stem Extensions	11
Double Seal Valve Cap.....	12
Air Chuck and Service Gauges	12
E-Z Mount Wheel Alignment Sleeves.....	12

Light Duty Trucks - Wheel Accessories

Wheel Cap Nuts (Fasteners)	13
Two-Piece Flange Nuts	13
Flange Nut Covers	14
Alcoa Hug-A-Lug® Nut Covers.....	14
Medium Duty Nut Covers	14
Aluminum Axle End Covers	15 - 16
Wheel Hub Cover System Kit for 19.5" Wheels	17
Wheel Hub Cover System Kit for Medium Duty Wheels	18

Alcoa Wheel Service Manual

This limited warranty should be used in conjunction with the Alcoa Wheel Service Manual. The Wheel Service Manual contains important safety information and warnings, and failure to read and understand this information may result in serious injury or death. The limited warranty is included with the Wheel Service Manual, but may appear elsewhere. If you do not have copies of the Wheel Service Manual, you may obtain copies free of charge from Alcoa Wheel Products, 1616 Harvard Avenue, Cleveland, Ohio 44105, (800) 242-9898 and on the Web at www.alcoawheels.com.

Ordering Your Alcoa Accessories

Please place your order by calling 800-242-9898 between 9 a.m. and 5 p.m. EST.

If you have fitment questions, please call 800-242-9898, and a customer service representative will assist you with compiling your order.

Warranty

This warranty covers all wheel accessories listed in this Accessory Products Catalog and all other wheel accessories sold and/or manufactured by Alcoa ("Wheel Accessories").

Alcoa warrants Wheel Accessories to be free from any manufacturing defects for two (2) years from the date of purchase. If a Wheel Accessory is defective at any time during the above described warranty period, the Wheel Accessory shall be returned along with the original receipt and a brief description of the defect to Alcoa Wheel and Transportation Products, 3320 Gilchrist Rd., Mogadore, Ohio 44260. Upon confirmation that the Wheel Accessory is defective, Alcoa, at its option, shall either replace the defective Wheel Accessory or issue a refund. Alcoa shall have no other liability for breach of warranty. For more information regarding warranty coverage or procedures, please call 800-242-9898 option # 1 to speak with an Alcoa representative.

This warranty is limited to the original consumer purchaser of the Wheel Accessory and expires immediately upon transfer of the Wheel Accessory to another individual or entity. Alcoa does not warrant against defects that are caused by misuse or abuse of the Wheel Accessory. ADDITIONALLY, ALCOA HEREBY DISCLAIMS ANY AND ALL IMPLIED WARRANTIES, INCLUDING, BUT NOT LIMITED TO ANY WARRANTIES OF MERCHANTABILITY OR FITNESS FOR A PARTICULAR PURPOSE. ALCOA IS NOT RESPONSIBLE FOR ANY INCIDENTAL OR CONSEQUENTIAL DAMAGES CAUSED BY THE WHEEL ACCESSORIES. Some states do not allow the exclusion or limitations of incidental or consequential damages, so the above limitations or exclusion may not apply to you. This warranty gives you specific legal rights, and you may also have other rights, which vary from state to state. Nothing in this warranty shall be construed as superseding or adding to any Alcoa warranty for truck wheels, light truck wheels, auto wheels or other products.



1616 Harvard Ave.
Cleveland, OH 44105
800-242-9898

www.alcoawheels.com



One-Piece Hub Cover System for 10-Hole, 285.75mm, 22.5" and 24.5" Wheels

Part No.	Description	Wheel Type	Finish
086100S	Front Axle Kit includes: Two front covers and one removal tool. Use a short handle rubber mallet for application.	Hub Piloted	Chrome
087100S	Rear Axle Kit includes: Two rear covers and one removal tool. Use a short handle rubber mallet for application.	Hub Piloted	Chrome
000800	Removal Tool		

It's a One-Piece Wonder

- Reduces parts inventory for the dealership
- Reduces installation time: 1 part vs. 11 for fleets or owner operators
- Patented On-Off Attachment System
- On-Off Removal for hub lube and DOT inspection
- Available for Alcoa 14" wheels
- Two-year warranty





Front Steer Wheel Hub Cover Kits for 10-Hole 22.5" and 24.5" Wheels

Part No.	Description/Application	Wheel Type	Nut Cover
076155	Kit includes: one hub cover, 10 screw-on Hug-A-Lugs [®] with clamps and one wrench. Application: Cover is secured by screwing the 001551 onto inner clamp. Inner clamp is placed on stud threads.	Ball Seat	001551 1.5"
076185*	Kit includes: one hub cover, 10 screw-on Hug-A-Lugs [®] and one wrench. Application: Cover is secured by screwing the 001851 directly into stud threads.	Hub Piloted	001851 33mm
076188	Kit includes: one hub cover, 10 screw-on Hug-A-Lugs [®] with clamps and one wrench. Application: Cover is secured by screwing the 001881 onto inner clamp. Inner clamp is placed on stud threads.	Hub Piloted	001881 33mm

* Requires a minimum of 4 threads per stud.

For technical assistance with identifying
the correct product for your
heavy duty truck, call 800.242.9898



Rear Drive Wheel Cover Kits for 10-Hole 22.5" and 24.5" Wheels

Part No.	Description/Application	Wheel Type	Nut Cover
077155	Kit includes: one hub cover, 10 screw-on Hug-A-Lugs [®] with clamps and one wrench. Application: Cover is secured by screwing the 001551 onto inner clamp. Inner clamp is placed on stud threads.	Stud Piloted	001551 1.5"
077185*	Kit includes: one hub cover, 10 screw-on Hug-A-Lugs [®] and one wrench. Application: Cover is secured by screwing the 001851 directly onto stud threads.	Hub Piloted	001851 33mm
077188	Kit includes: one hub cover, 10 screw-on Hug-A-Lugs [®] with clamps and one wrench. Application: Cover is secured by screwing the 001881 onto inner clamp. Inner clamp is placed on stud threads.	Hub Piloted	001881 33mm

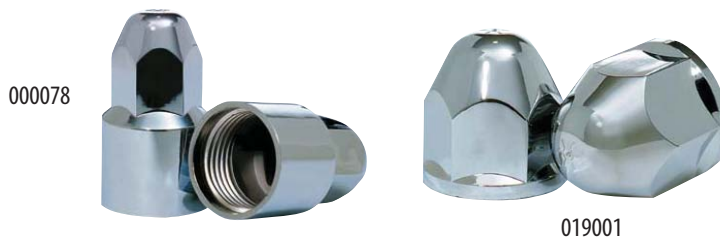
* Requires a minimum of 4 threads per stud.

Flange Nut Covers

Part No.	Description	Thread Size
000200	30mm Hex Flange Nut	M20 x 1.5"
000220	33mm Hex Flange Nut	M22 x 1.5"



Requires a minimum of 3 threads protruding through lug nut.
Black spacer not applicable with short lug nut.



Hug-A-Lug® Nut Covers (For 16" and 19.5" Wheels)

Part No.	Description	For Heights	Fits Nut	Finish
000078*	2.125" Tall	.96"	60° Cone	Chrome
000079*	1.525" Tall	.96"	60° Cone	Chrome
019001**	Hug-A-Lug®	1 1/16"	2-Piece Flange	Chrome

* Fits Alcoa Part No. xx5xxx Nuts

** Fits Alcoa Part No. x39xxx Nuts

Medium Duty Nut Covers

Part No.	Description	Finish
000120	For use with 6", 6-lug Hub Piloted, 205mm Bolt Circle	Chrome
000230	For use with medium duty trucks with 19.5", 8-lug wheels and 30mm hex	Stainless Steel
000233	For use with medium duty trucks with 19.5", 8-lug wheels and 33mm hex	Stainless Steel



000120



Hub Covers

Part No.	Description	Finish
076100	Front Axle Cover for Interlocking Hub Cover System	Chrome
077100	Rear Axle Cover for Interlocking Hub Cover System	Chrome

Hub Cover System Cap Nut Cover Wrenches

Part No.	Part No.	Description
Single	Shelf Pack (5)	
000500	000500SP	Cap Nut Cover Wrench for Ball Seat Hug-A-Lugs®
000600	000600SP	Cap Nut Cover Wrench for Hub Piloted Hug-A-Lugs®



Hug-A-Lug® Nut Covers for 33mm Hex Two-Piece Flange Nuts (Hub-Pilot Wheels)

Part No.	Description	For Heights	Finish
001851	For 33mm Hex Two-Piece Flange Nut for Trucks (screw-on)	27-31mm	Chrome
001881	For 33mm Hex Two-Piece Flange Nut for Trucks with clamps	27-31mm	Chrome
000188	Black Interlocking Clamp (replacement)	27-31mm	Black
000888	Off White Interlocking Clamp (replacement)	27-31mm	Off White

Hug-A-Lug® Nut Covers for 1.5" Hex Nut (Ball-Seat, Stud Located Wheels)

Part No.	Description	Finish
001551	For 1.5" Hex Ball Seat Nut, with clamps	Chrome
000155	White Interlocking Clamps (replacements)	White
000555	Gray Interlocking Clamps (replacements)	Gray



Hug-A-Lug® Nut Covers for 1.5" Hex Nut (Ball-Seat, Stud Located Wheels)



Part No.	Part No.	Description	Finish
Single	Display Pack (10)		
001501	001503	For 1.5" Hex Stud-pilot Nut	Chrome

Hug-A-Lug® Two-Piece Nut Covers for 33mm Hex Flange Nuts (Hub-Pilot Wheels)



Part No.	Part No.	Part No.	Description	For Heights	Finish
Single	Shelf Pack (10)	Display Pack (10)			
001801	001802	–	For 33mm Hex Flange Nut for Buses	.886" - 1.0"	Chrome
001811	001812	001813	For 33mm Hex Flange Nut for Trucks	27-31mm	Chrome

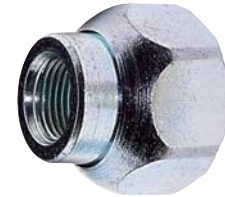
Hug-A-Lug® Nut Covers for 1.5" Hex Two-Piece Flange Nuts (Hub-Pilot Wheels)

Part No.	Part No.	Description	For Heights	Finish
Single	Shelf Pack (10)			
001821	001822	For 1.5" Hex Flange Nut for Trucks	1.4375"	Chrome
001831	001832	For 1.5" Hex Flange Nut for Buses	.875"	Chrome

Wheel Cap Nuts (Fasteners) Outer Cap Nuts (Ball Seat Wheels)

Part No.	Description	Kit (contains 6 each of)
499100	Complete truck kit – metric medium duty aluminum wheel ball seat mounting kit – M20/1.5 stud thread size, dual aluminum rear wheels kit	499211 left cap nut front, 499222 right cap nut front, 499331 left cap nut rear, 499342 right cap nut rear, 499451 left inner cap nut rear and 499462 right inner cap nut rear

Part No.	Part No.	Thread Direction	Description
Single	Shelf Pack (10)		
499211	499211SP	Left	M20x1.5 cap nut – mounts single ball seat wheels.
499222	499222SP	Right	
599501 (5995L)	599501SP	Left	3/4" x 16 cap nut – mounts standard single wheels and wide base wheels to 3/4" studs. *
599502 (5995R)	599502SP	Right	



599502 (5995R)

Part No.	Part No.	Thread Direction	Description
Single	Shelf Pack (10)		
499451	499451SP	Left	M30x1.5 – mounts double ball seat aluminum wheels inconjunction with inner cap nut secures outer dual.
499462	499462SP	Right	
599601 (5996L)	599601SP	Left	1 1/8" x 16 cap nut – mounts standard single wheels and wide base wheels to 1 1/8" studs and provides additional 1/8" hex height. Also mounts outer dual wheel to 1 1/8" inner cap nut. *
599602 (5996R)	599602SP	Right	



599601 (5996L)

Inner Cap Nuts (Ball Seat Wheels)

Part No.	Part No.	Thread Direction	Description
Single	Shelf Pack (10)		
499331	499331SP	Left	M20/M30x1.5 – for use with dual aluminum ball seat wheels. Secures inner dual inconjunction with outer cap nut.
499342	499342SP	Right	
598801 (5988L)	598801SP	Left	For use with standard length studs (1.31" to 1.44" stud standout) or longer studs not to exceed 1.88" stud standout. Full external threads, counter bore 5/16" deep at open end. For use with aluminum inner and outer wheels. Prevents stud from bottoming out in cap nut. *
598802 (5988R)	598802SP	Right	



598801 (5988L)

Wheel Cap Nuts (Fasteners) Outer Cap Nuts (For Two-Piece Flange Nuts - Hub Piloted Wheels)

Part No.	Part No.	Description
Single	Shelf Pack (10)	
039874	039874SP	Two-piece, 26.25mm height, 33mm hex, M22 x 1.5mm, RH thread flange nut. Mounts single and dual aluminum wheels to wheel centering hubs. Right-hand threads used on both sides of vehicle. Refer to Alcoa Wheel Service Manual for minimum stud standouts for single and dual wheel applications.



Part No.	Part No.	Description
Single	Shelf Pack (10)	
430632	430632SP	Two-piece, 50mm height, 33mm hex, M22 x 1.5mm, RH thread, sleeved cap nut. Mounts single aluminum wheels, with 32mm bolt holes, to wheel centering hubs with stud standouts less than 1.71" (43.5mm). Right-hand threads used on both sides of vehicle.



Part No.	Part No.	Description
Single	Shelf Pack (10)	
430732	430732SP	Two-piece, 78.5mm height, 33mm hex, M22 x 1.5mm, RH thread, sleeved cap nut. Mounts dual aluminum wheels, with 32mm bolt holes, to wheel centering hubs with stud standouts less than 2.85" (72mm). Right-hand threads used on both sides of vehicle.



Part No.	Part No.	Description
Single	Shelf Pack (10)	
578032	578032SP	Dacromet coated. Two-piece, 36.25mm height, 33mm hex, M22 x 1.5mm, RH thread, sleeved cap nut. Mounts single aluminum wheels, with 32mm bolt holes, to wheel centering hubs with stud standouts less than .98" (25mm). Right-hand threads used on both sides of vehicle.
578632	578632SP	Dacromet coated. Two-piece, 50mm height, 33mm hex, M22 x 1.5mm, RH thread, sleeved cap nut. Mounts single aluminum wheels, with 32mm bolt holes, to wheel centering hubs with stud standouts less than 1.71" (43.5mm). Right-hand threads used on both sides of vehicle.
578732	578732SP	Dacromet coated. Two-piece, 78.5mm height, 33mm hex, M22 x 1.5mm, RH thread, sleeved cap nut. Mounts dual aluminum wheels, with 32mm bolt holes, to wheel centering hubs with stud standouts less than 2.85" (72mm). Right-hand threads used on both sides of vehicle.



578032



Grommet Seal Valve Stems

Part No.	Valve TR No.	A Height	Bend Angle	B Length
005520	552	1.26"	—	—
005530	553	2.31"	—	—
005533	553C	.93"	45°	1.38"
005535	553E	.98"	75°	1.38"
005544	554D	.98"	60°	1.94"
005554	555D	.98"	60°	2.6"
005555	555E	.98"	75°	2.6"
006027	60MS27	1.19"	27°	1.19"
007007	70MS-7	1.38"	7°	1.12"

Grommet Seal Valve Stem Features:



- Longer Sealing Life
- Greater Corrosion Resistance
- Larger Sealing Surface
- Hex Recess in Base for Easy Install
- Grommet has Better Temperature Range and Tear Resistance

See Alcoa Spec Data Guide for full application list on Alcoa Aluminum Wheels.

If it's not an Alcoa aluminum wheel, it's just an aluminum wheel.

- Alcoa invented aluminum wheels over 60 years ago.
- Alcoa controls the whole production process – from mining through refining, smelting, forging and machining.
- We offer a complete product line in the industry.
- We have global presence and are standard position on more OEMs than any other brand.
- We have a proprietary one-piece forging process that creates wheels strong enough for M-1 tanks, 747 jets and your fleet.



Valve Stem Extension Stabilizers

Part No. 002125



Fits wheel size: 19.5"
Hand Hole Diameter: 1.50"
Hole Position: Center

Part No. 002126



Fits wheel size: 19.5"
Hand Hole Diameter: 1.50"
Hole Position: Off-Center

Part No. 002127



Fits wheel size: 22.5 x 9.0
Hand Hole Diameter: 1.50"
Hole Position: Center

Part No. 002225



Fits wheel size: 22.5"
Hand Hole Diameter: 2.00"
Hole Position: Center

Part No. 002227



Fits wheel size: 22.5"
Hand Hole Diameter: 2.50"
Hole Position: Center

Part No. 002245



Fits wheel size: 24.5"
Hand Hole Diameter: 2.19"
Hole Position: Off-Center

Part No. 002246



Fits wheel size: Peterbilt
Hand Hole Diameter: Oval
Hole Position: Center
For wheels purchased before year 2000

Part No. 002247
Part No. 002247SP (Shelf Pack 10)



Fits wheel size: 24.5"
Hand Hole Diameter: 2.375"
Hole Position: Off-Center

Part No. 002248



Fits wheel size:
Freightliner Stylized
Hand Hole Diameter: 1 5/16" x 3.5"
Hole Position: Off-Center

Part No. 008864
Part No. 008864SP (Shelf Pack 8)



Fits wheel size: 22.5" & 24.5"
For 88367x, 88364x, 98364x
Hand Hole Diameter: 2.50"
Hole Position: Off-Center

Part No. 008964
Part No. 008964SP (Shelf Pack 8)



Fits wheel size: Prevost
Hand Hole Diameter: 2.00"
Hole Position: Off-Center

Part No. 027245
Part No. 027245SP (Shelf Pack 8)



Fits wheel size: 24.5"
For 98367x
Hand Hole Diameter: 2.70"
Hole Position: Off-Center



125392

Valve Stem Extension Stabilizer Kits

Part No.	Description	Stabilizer (2)	Extensions (2)
125392	For 19.5" wheels with 1.5" diameter hand hole, valve stem diameter 0.33", center hole	002125	000392
126392	For 19.5" wheels with 1.5" diameter hand hole, valve stem diameter 0.33", off-center hole	002126	000392
127392	For 22.5" x 9" wheels with 1.5" diameter hand hole, valve stem diameter 0.33", center hole	002127	000392
225392	For 22.5" wheels with 2.00" diameter hand hole, valve stem diameter 0.33", center hole	002225	000392
227392	For 22.5" wheels with 2.50" diameter hand hole, valve stem diameter 0.33", center hole	002227	000392
245392	For 24.5" wheels with 2.19" diameter hand hole, valve stem diameter 0.33", off-center hole	002245	000392
246392	For Peterbilt stylize oval hand hole wheels (before year 2000)	002246	000392
247392	For 24.5" wheels with 2.38" diameter hand hole, valve stem diameter 0.33", off-center hole	002247	000392
864392	For 88367X with 2.50" diameter hand hole, valve stem diameter 0.33", off-center hole	008864	000392
927245	For 98367X wheels with 2.50" diameter hand hole, valve stem diameter 0.33", off-center hole	027245	000392
927255	Kit for 98367X wheels with 2.50" diameter hand hole, valve stem diameter 0.33", off-center hole	027245 (10)	000392 (10)
964392	For Provoost wheels with 2.50" diameter hand hole, valve stem diameter 0.33", off-center hole	027245	000392



000392

Valve Stem Extensions

Part No.	Part No.	Description	Collar Type	Effective Length
Single	Shelf Pack (10)			
000352	000352SP	Valve Stem Extension (Plastic)	Long 1"	5.21"
000392	000392SP	Valve Stem Extension (Metal)	Long 1"	5.125"

Adding air to the inside wheel when you have dual applications can be a real struggle - unless you know about Alcoa's valve stem extensions and stabilizers. These unique products are what smart drivers use to make this job a snap. The extension is supported by a soft yet stable grommet that fits snugly into the hand hole so that, when you need to check the pressure or add air, it's as easy to do on the inside positions as on the outside tires. Stop fighting with your dualies, and get genuine Alcoa valve stem extensions and stabilizers.



Valve Cap

Part No.	Part No.	Description
Single	Shelf Pack (10)	
001009	001009SP	Double seal valve cap seals at the top of the cap which prevents dirt and water from penetrating the cap, eliminating the chances of clogged air passages due to ice and debris. Allows for inflation and deflation of the tire without removing the cap. A great time saver.
000633	–	Valve cap remover makes it easy to remove and install valve caps on inside dual wheels. Designed for aluminum wheels with small hand holes, it comes with a protective sleeve to prevent scratching. Also works great at removing tight or cross-threaded caps. Positive hold while valve is serviced. Keeps cap in tool.

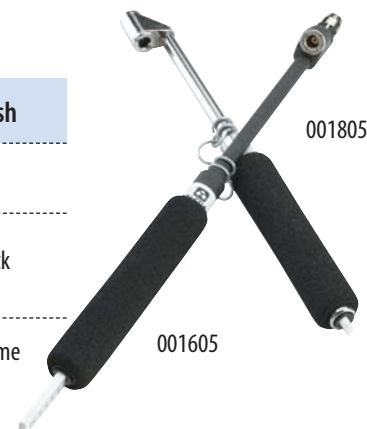
Air Chucks



Part No.	Description
003500	A new design offers greater durability and is more user friendly on the straight-on and 30° reverse angle chuck. This 6” long chuck finished with an attractive black polyurethane coating has 1/4” NPT female threads.
003700	A special air chuck with a straight-on connection and a 180° reverse chuck allows easier access to valves located in tight, hard-to-reach places. The 003700 is 6” long and has 1/4” NPT female threads.

Service Gauges

Part No.	Part No.	Calibration	Incre.	Bar	Chuck Style	Finish
Single	Shelf Pack (5)					
001605	001605SP	10-150 PSI	2 PSI	Nylon 30° reverse	Straight-on Polyurethane	Black
001805	–	10-150 PSI	2 PSI 180° reverse	Nylon	Straight-on	Chrome



The grip on these gauges allows a positive grip during inclement weather conditions and serves as a protective cushion should the gauge be inadvertently dropped. Can be used on all dual foot truck service gauges.

E-Z Mount Wheel Alignment Sleeves

(For Steer, Drive and all Trailer Axle Applications with a 22mm Diameter Stud)

Part No.	Description
000426	Individual Wheel Alignment Sleeves
407426	4 Tools and Kit



Wheel Cap Nuts (Fasteners) 60° Cone Seat Cap Nuts (For Stud Located 16"x7" Wheels)

Part No.	Part No.	Thread Size	Hex	Torque
Single	Shelf Pack (10)			
005014	005014SP	M14 x 1.5mm	7/8"	100 - 110 ft. lbs.
005916	005916SP	9/16" x 20 tpi	7/8"	120 - 140 ft. lbs.



005014

Each lug nut has specific inner threads for each application with universal outside threads to accept the Alcoa chrome-plated nut cover.
(See Hug-A-Lug® Part Nos. 000078 and 000079)

Two-Piece Flange Nuts (For Hub Piloted 16"x6" Wheels & some RV Wheels)

Part No.	Part No.	Thread Size	Hex	Torque
Single	Shelf Pack (10)			
039913	039913SP	M14 x 2.0mm (internal thread)	1.050"	140 ft. lbs.
039946	039946SP	5/8" x 18 tpi (internal thread)	1.050"	150 ft. lbs.
139698	139698SP	M14 x 1.5mm (internal thread)	1.050"	140 ft. lbs.
139987	139987SP	9/16" x 18 tpi (internal thread)	1.050"	140 ft. lbs.



139698

Each lug nut has specific inner threads for each application and common hex head to accept the Alcoa chrome-plated nut cover.
(See Hug-A-Lug® Part No. 019001)

One-Piece Forged Strength

Our one-piece design eliminates welds that concentrate stress where fatigue cracks can start. Forging also aligns the metal grain in a uniform direction along the contours of the wheel, increasing strength.

Withstands Tough Terrain

Alcoa forged aluminum wheels are four times stronger than steel wheels in crush tests. That's why we also use this technology to produce wheels for M-1 tanks and 747 jets.

Smooth Ride

Precision machined to ensure a smoother, truer ride for both you – and your cargo. This is why most 18-wheelers ride Alcoa aluminum wheels.

Better Handling

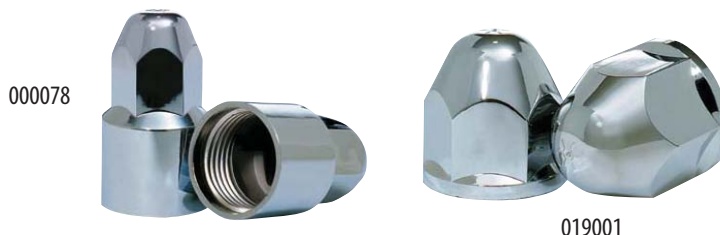
Aluminum weighs less than steel, lowering the suspension's unsprung weight, which allows faster suspension response, a smoother ride and improved traction when cornering.

Flange Nut Covers

Part No.	Description	Thread Size
000200	30mm Hex Flange Nut	M20 x 1.5"
000220	33mm Hex Flange Nut	M22 x 1.5"



Requires a minimum of 3 threads protruding through lug nut.
Black spacer not applicable with short lug nut.



Hug-A-Lug® Nut Covers (For 16" and 19.5" Wheels)

Part No.	Description	For Heights	Fits Nut	Finish
000078*	2.125" Tall	.96"	60° Cone	Chrome
000079*	1.525" Tall	.96"	60° Cone	Chrome
019001**	Hug-A-Lug®	1 1/16"	2-Piece Flange	Chrome

* Fits Alcoa Part No. xx5xxx Nuts

** Fits Alcoa Part No. x39xxx Nuts

Medium Duty Nut Covers

Part No.	Description	Finish
000120	For use with 6", 6-lug Hub Piloted, 205mm Bolt Circle	Chrome
000230	For use with medium duty trucks with 19.5", 8-lug wheels and 30mm hex	Stainless Steel
000233	For use with medium duty trucks with 19.5", 8-lug wheels and 33mm hex	Stainless Steel



000120

Aluminum Axle End Covers

Part No. 001611*



Height: 1.125" straight
For Dodge/Ford dualie applications
Bolt Pattern: 8 x 6.50

Part No. 001612*



Height: 4.750" straight
For Dodge/Ford dualie applications
Bolt Pattern: 8 x 6.50

Part No. 001613*



Height: 3.50" straight
For Dodge/Ford dualie applications
Bolt Pattern: 8 x 6.50

Part No. 001681*



Height: 4.750" straight with
3.50" open end
For Dodge/Ford dualie applications
Bolt Pattern: 8 x 6.50

Part No. 003167



Height: 4.700" straight
Hub bores: 5.150"
Bolt Pattern: 8 x 6.50

Part No. 003611*



Height: 1.125" straight
For Chevy dualie applications
Bolt Pattern: 8 x 6.50

Part No. 003612*



Height: 4.750" straight
For Chevy dualie applications
Bolt Pattern: 8 x 6.50

Part No. 003613*



Height: 3.50" straight
For Chevy dualie applications
Bolt Pattern: 8 x 6.50

Part No. 004167



Height: 4.000" straight
Hub bores: 5.150"
Bolt Pattern: 8 x 6.50

Aluminum Axle End Covers

Part No. 005267



Height: 2.000" straight
Hub bores: 4.250"
Bolt Pattern: 5 x 5.50 & 8 x 6.50

Part No. 008167



Height: 4.650" straight with
4.500" open end
Hub bores: 5.150"
Bolt Pattern: 8 x 6.50

Part No. 009267



Height: 2.00" straight
Hub bores: 3.295"
Bolt Patterns: 5 x 4.50,
5 x 4.75, 5 x 5.50 & 6 x 5.50

Part No. 011911*



Height: 1.63" straight
Hub bores: 5.250" & 5.460"
Bolt Pattern: 10 x 7.25

Part No. 011912*



Height: 5.53" straight
Hub bores: 5.250" & 5.460"
Bolt Pattern: 10 x 7.25

Part No. 021000



Height: .750" straight
Hub bores: 6.343"
Bolt Pattern: 6 x 205mm

Part No. 022000



Height: 3.937" straight
Hub bores: 6.343"
Bolt Pattern: 6 x 205mm

* Mounts from the front

Forged
Strength.



001102



001103



Wheel Hub Cover System Kit for 19.5" Wheels

Part No.	Description	Bolt Circle	Package Includes
001004	Chrome plated plastic cover for 19.5" x 6" Hub Piloted wheels, fits 10-lug, for Ford F450 and F550.	10 x 225mm	1 Front
001005	Chrome plated plastic cover for 19.5" x 6" Hub Piloted wheels, fits 10-lug, for Ford F450 and F550.	10 x 225mm	1 Rear
001102	Chrome plated plastic cover for 19.5" x 6" Hub Piloted wheels, fits 8-lug, for Ford F450 and F550.	8 x 225mm	1 Front
001103	Chrome plated plastic cover for 19.5" x 6" Hub Piloted wheels, fits 8-lug, for Ford F450 and F550.	8 x 225mm	1 Rear
001109	Stainless steel rear hub cover kit for medium duty trucks with 19.5" x 6", 8-lug wheels and 33mm hex.	8 x 275mm	1 Rear, 1 Bolt (001763), 1 Bracket (001834)
001402	Stainless steel front cover for medium duty trucks with 19.5" x 6", 8-lug wheels and 33mm hex.	8 x 275mm	1 Front
100450	Chrome plated plastic hub cover kit for 19.5" x 6" hub piloted wheels, fits 10-lug, for Ford F450 and F550.	10 x 225mm	2 Fronts 001004), 2 Rears (001005)
109176	Stainless steel wheel kit for medium duty trucks with 19.5" x 6", 8-lug wheels and 33mm hex.	8 x 275mm	2 (001109)
109176A	Stainless steel rear wheel kit for medium duty trucks with 19.5" x 6", 8-lug wheels and 33mm hex.	8 x 275mm	2 (001109), and 16 (00233)
109176B	Stainless steel rear wheel kit for medium duty trucks with 19.5" x 6", 8-lug wheels and 33mm hex	8 x 275mm	2 (001109), and 16 (00230)
110203	Chrome plated plastic cover for 19.5" x 6" Hub Piloted wheels, fits 8-lug, for Ford F450 and F550.	8 x 225mm	2 Fronts (001102), 2 Rears (001103)
140230B	Stainless steel front wheel kit for medium duty trucks with 19.5" x 6", 8-lug wheels and 30mm hex	8 x 275mm	2 Fronts (001402), and 16 Nut Covers (00230)
140233	Stainless steel front wheel kit for medium duty trucks with 19.5" x 6", 8-lug wheels and 33mm hex	8 x 275mm	2 Fronts (001402), and 32 Nut Covers (00233)
140233A	Stainless steel front wheel kit for medium duty trucks with 19.5" x 6", 8-lug wheels and 33mm hex	8 x 275mm	2 Fronts (001402), and 16 Nut Covers (00233)

Application: Snaps on over lugnuts and center hub.



ALCOA

Alcoa Wheel and Transportation Products

1616 Harvard Ave.

Cleveland, OH 44105

(800) 242-9898

www.alcoawheels.com

© 2013 Alcoa, Inc.

Edition C

**We Love to Accessorize Trucks.
We Can't Get Enough of It.**





2014 **PRODUCT SPEC GUIDE**



THE LIGHTWEIGHT INNOVATION LEADER

INNOVATION
IS IN OUR DNA

This year, Alcoa is launching technology that's ready to shatter industry standards. But don't just take our word for it – see for yourself.

HEAVY-DUTY WITHOUT THE HEAVY.

Alcoa Ultra ONE™ Wheel Technology

We dramatically reduced the weight of our wheels while maintaining every ounce of strength with the invention of our Ultra ONE™ technology with MagnaForce™ alloy.

At just 40 pounds, the 22.5" x 8.25" Alcoa Ultra ONE™ Wheel with MagnaForce™ alloy is the lightest in the industry.

- Engineered with MagnaForce™ alloy, 17% stronger for a lighter wheel.
- 5 pounds lighter than anything else on the market.
- Saves nearly another 100 pounds on an 18-wheeler compared to other aluminum wheels.



Ultra ONE™ Wheel
ULTRAx

ALCOA WHEELS OFFER A SPECTRUM OF BENEFITS:

- Lighter weight for improved productivity
- Lower maintenance costs
- Reduced fuel consumption and emissions for lower operating costs
- Enhanced image and increased vehicle resale value
- Lower CO₂ emissions to achieve sustainability goals

standards. But don't just take our word for it – see for yourself.

Alcoa LvL ONE® Technology

Alcoa LvL ONE® technology took the industry by storm, providing enhanced strength and eye-catching brightness, while still maintaining a low weight.

Available in popular applications including:



14" Wide Base Wheel
84360x, 84362x

9" Wheel
89365x, 89465x

4 LBS.
LIGHTER

14" Wide Base Wheels

At just 54 lbs., the lightest 14" Wide Base Wheels on the market today.

Wheel Description	Part Number	Max Load (lbs)	Approx. Weight (lbs)	18-wheeler Weight Savings
22.5 x 14	84360x	12,800	54 lbs	1,400 lbs
	84362x			

3 LBS.
LIGHTER

9" Wheels

Alcoa's new 9" Wheels are lighter than ever, and ideal for refuse collection, logging, mining and other heavy haul applications.

Wheel Description	Part Number	Max Load (lbs)	Approx. Weight (lbs)	Weight Savings Aluminum vs. Steel
22.5 x 9	89365x	10,000	51 lbs	52 lbs
	89465x		59 lbs	49 lbs

SURFACE OPTION CODES

Alcoa aluminum disc wheel mounting dimensions are consistent with SAE J694 or ISO 4107 as applicable. The finish for Alcoa wheels is specified by replacing the 6th digit “x” shown in the part number with the appropriate finish option. Finishes are defined as:

- | | |
|--|--|
| 0 - Brushed finish on both sides as applicable* | 7 - Clean Buff finish on both sides as applicable* |
| 1 - Polished outside only | 8 - Clean Buff finish in the inset position of a wide base wheel |
| 2 - Polished inside only (same side as roll stamp) | 9 - Brushed finish in the inset position of a wide base wheel |
| 3 - Polished both sides | |

*0 and 7 finish options are determined by inset or outset mounting positions and may not be finished on both sides. See chart for position and available finish options.



Dura-Bright® Wheels are identified by adding “DB” at the end of the regular part number.

Dura-Flange® Wear Protection Wheels are identified by adding “DF” at the end of the regular part number.

The Dura-Bright® and Dura-Flange® Wear Protection options together are identified by the “DD” suffix.

The only finishes available for each part number are defined in the Finish Options column.

Additional Information:

- Dura-Bright® Wheels shine without polishing. Just wash with soap and water, do not polish or clean with abrasives.
- Do not exceed maximum wheel load. Customer must compare OEM vehicle load rating to maximum wheel load rating.
- Do not overinflate. Refer to tire manufacturer’s recommendation for proper tire pressure.
- Before mounting the tire, perform a wheel fitment check to ensure proper clearance from obstructions.
- Capacity ratings as dual or single in highway service.
- Some wheels may bear part numbers not shown in this Spec Guide. Before servicing these wheels, contact your Alcoa wheel representative for proper load, inflation and part compatibility.
- Outset (positive) / inset (negative) – The distance from the rim centerline to the mounting face of the wheel. Inset (negative) places the rim centerline inboard of the mounting face and outset (positive) places the rim centerline outboard of the wheel mounting face. (Outset is also half dual space for dual wheels.)
- Check with vehicle manufacturer or axle manufacturer before retrofitting to outset wide base wheels to ensure compatibility with axle and wheel end components. P/Ns 84147x and 84062x are not recommended for use on N-Spindle trailer axles.
- P/Ns 88567x and 98567x are Alcoa Severe Service® Wheels.
- To obtain information about free training on proper installation and maintenance procedures, contact Alcoa Wheel Products at (800) 242-9898 or on the web at www.alcoawheels.com.
- For details on accessories, see Alcoa Accessory Products Catalog.

HEAVY DUTY DATA

	SURFACE OPTION CODES							MOUNTING SYSTEM				OFFSET		LOAD RATING		Valve Stem	Front Hub Cover (Includes Nut Covers Where Applicable)	Rear Hub Cover (Includes Nut Covers Where Applicable)	Nut Cover Only (Not Intended to Secure Hub Covers)	
	Size	P/N	Replaces P/N	Approx. Wgt (lbs)	Finish Options	DB Options	DF Options	DB & DF Options	Bolt Holes	Bolt Circle	Bolt Hole Diameter	Bore	Outset	Inset	Max Load (lbs)					Max Infl (psi)
HEAVY DUTY Ball Seat	22.5x8.25	88311x	88310x, 88300x	52	7	3DB			10	11.25	1.18	8.722	6.66	5.68	7200	130	TR555D	076155	077155	001501
	22.5x9	89300x		61	7				10	11.25	1.18	8.722	6.94	5.93	9000	130	TR554D	076155	077155	001501
	24.5x8.25	98312x	98310x	59	7				10	11.25	1.18	8.722	6.60	5.59	7200	130	TR555D	076155	077155	001501
HEAVY DUTY Hub Pilot	22.5x7.5	87340x		53	7				8	275mm	26mm	221.1mm	6.28	5.44	7300	120	TR555D	†082122 (33mm kit) 140233A (Stainless 33mm)	†082133 (33mm kit) 109176A (Stainless 33mm)	001811
	22.5x8.25	88344x	88342x, 88341x	49	7				8	275mm	26mm	221.1mm	6.66	5.79	7400	130	TR554D	†082122 (33mm kit) 140233A (Stainless 33mm)	†082133 (33mm kit) 109176A (Stainless 33mm)	001811
	22.5x7.5	87360x		53	7				10	285.75mm	26mm	220.1mm	6.28	5.44	7300	120	TR555D	076188, 076185**, 086100S	077188, 077185**, 087100S	001811
	22.5x8.25	ULTRAx		40	1, 2, 7	0DB, 1DB, 2DB	7DF		10	285.75mm	26mm	220.1mm	6.60	5.85	7400	130	TR554D	076188, 076185**, 086100S	077188, 077185**, 087100S	001811
	22.5x8.25	88367x	88364x, 88362x	45	1, 2, 3, 7	0DB, 1DB, 2DB, 3DB	1DF, 2DF, 7DF	1DD, 2DD, 3DD	10	285.75mm	26mm	220.1mm	6.60	5.79	7400	130	TR554D	076188, 076185**, 086100S	077188, 077185**, 087100S	001811
	22.5x8.25	88567x	88560x	52	1, 2, 7		7DF		10	285.75mm	26mm	220.1mm	6.60	5.75	8050	130	TR554D	076188, 076185**, 086100S	077188, 077185**, 087100S	001811
	22.5x9	89365x*	89363x	51	1, 7	0DB, 1DB			10	285.75mm	26mm	220.1mm	N/A	3.12	10000	130	TR555E	076188, 076185**, 086100S	N/A	001811
						2DB								4.06	N/A					
	22.5x9	89465x	89464x, 89364x, 89360x	59	1, 2, 3, 7	0DB, 1DB, 2DB, 3DB	7DF	3DD	10	285.75mm	26mm	220.1mm	6.94	5.96	10000	130	TR554D	076188, 076185**, 086100S	077188, 077185**, 087100S	001811
	24.5x8.25	98247x	98340x	57	7				8	275mm	26mm	221.1mm	6.60	5.73	7300	130	TR555D	†082122 (33mm kit) 140233A (Stainless 33mm)	†082133 (33mm kit) 109176A (Stainless 33mm)	001811 001811
24.5x8.25	98367x	98364x, 98362x	56	1, 2, 3, 7	0DB, 1DB, 2DB, 3DB	1DF, 2DF, 3DF, 7DF		10	285.75mm	26mm	220.1mm	6.60	5.73	7850	130	TR555D	076188, 076185**, 086100S	077188, 077185**, 087100S	001811	
24.5x8.25	98567x	98560x	64	1, 2, 7		7DF		10	285.75mm	26mm	220.1mm	6.60	5.63	8300	130	TR555D	076188, 076185**, 086100S	077188, 077185**, 087100S	001811	
WIDE BASE Bus Applications	22.5x8.25	88361x		53	0, 3	0DB, 3DB	0DF	0DD, 3DD	10	11.25	1.18	8.673	6.66	5.81	7300	130	TR555D	N/A	N/A	001821
	22.5x8.25	88651x	88555x, 88455x	50	0, 3	0DB, 3DB	0DF, 3DF	0DD, 3DD	10	335mm	32mm	281.2mm	6.60	5.75	8050	130	70MS7	N/A	N/A	N/A
	22.5x8.25	88652x	88557x, 88456x	50	0, 3	0DB, 3DB	0DF, 3DF	0DD, 3DD	10	335mm	26mm	281.2mm	6.60	5.75	8050	130	70MS7	N/A	N/A	N/A
	22.5x9	89651x	89555x, 89455x	51	0, 3	0DB, 3DB	0DF, 3DF		10	335mm	32mm	281.2mm	6.93	6.08	9090	130	70MS7	N/A	N/A	N/A
	22.5x9	89652x	89553x, 89453x	51	0, 3	0DB, 3DB	0DF, 3DF		10	335mm	26mm	281.2mm	6.93	6.08	9090	130	70MS7	N/A	N/A	001811
	22.5x10.5	80350x		62		1DB			10	335mm	32mm	281.2mm	N/A	4.92	10500	130	TR553	N/A	N/A	N/A
	22.5x10.5	80360x		68	1	1DB			10	285.75mm	26mm	220.1mm	N/A	5.50	10500	130	TR553	076188, 076185**, 086100S	N/A	001811
	24.5x8.25	98350x		63	0, 3				10	335mm	26mm	281.2mm	6.79	5.81	8500	132	TR554D	N/A	N/A	001811
24.5x8.25	98361x		62	0, 3	0DB, 3DB			10	11.25	1.18	8.673	6.60	5.76	7300	130	TR555D	N/A	N/A	001821	
WIDE BASE Ball Seat	22.5x12.25	82305x		64	7 8				10	11.25	1.18	8.722mm	3.88 N/A	N/A 2.75	11400	130	TR553E TR555E	N/A 076155	077155 N/A	001501
	22.5x12.25	82306x	82306xA	69	7				10	11.25	1.18	8.722mm	N/A	4.68	11000	130	TR555E	076155	N/A	001501
	22.5x12.25	82262x*	82360x	60	2, 7	2DB			10	285.75mm	26mm	220.1mm	0.56	N/A	12300	130	TR553E	N/A	077188, 077185**, 087100S	001811
	22.5x12.25	82362x	82365x	62	2, 7 1, 8	0DB, 2DB 1DB, 9DB	7DF 8DF		10	285.75mm	26mm	220.1mm	3.88 N/A	N/A 2.75	12300	130	TR553E TR555E	N/A 076188, 076185**, 086100S	077188, 077185**, 087100S N/A	001811
	22.5x12.25	82462x*	82364x, 82366xA	66	1, 7	0DB, 1DB	7DF		10	285.75mm	26mm	220.1mm	N/A	4.68	12300	130	TR552	076188, 076185**, 086100S	N/A	001811
	22.5x13	83358x*	83357xA	76	0, 1				10	335mm	26mm	281.2mm	N/A	6.12	12800	130	TR553	00581	N/A	001811
	22.5x13	83365x		70	0, 2 1, 9				10	285.75mm	26mm	220.1mm	3.50 N/A	N/A 2.38	12300	130	TR553E TR555E	N/A 076188, 076185**, 086100S	077188, 077185**, 087100S N/A	001811
	22.5x13	83462x*	83364x, 83366xA	71	1, 7				10	285.75mm	26mm	220.1mm	N/A	5.30	12800	130	TR552	076188, 076185**, 086100S	N/A	001811
	22.5x14	84360x	84060x, 84267x, 84161x	54	1, 8, 2, 7	1DB 0DB, 2DB	7DF	2DD	10	285.75mm	26mm	220.1mm	1.00 N/A	N/A 0	12800	130	TR555E TR553E	N/A	077188, 077185**, 087100S	001811
22.5x14	84362x*	84062x, 84167x, 84160x	54	2, 7	0DB, 2DB	7DF	2DD	10	285.75mm	26mm	220.1mm	2.00	N/A	12800	130	TR553E	N/A	077188, 077185**, 087100S	001811	

*0 and 7 finish options are determined by inset or outset mounting positions and may not be finished on both sides. See chart for position and available finish options.
 **Hub cover system kits P/N 076185 (front) and P/N 077185 (rear) contain screw-on Hug-A-Lug® nut covers and require a minimum of four threads of the stud to extend above the tightened cap nut for use.
 †082012 (30mm kit Front and Rear)

Now available in the
DURA-BRIGHT®

surface option.



M-SERIES® WHEELS

We took all of the innovation, technology and know-how from big rig applications and brought it to the medium-duty market. For your most demanding jobs, trust M-Series® Wheels.



Lower vehicle lifetime operating costs



Reduce wheel maintenance



Lower fuel expenses



Reduce costs from curbing

