



# Technical Service Bulletin

SUBJECT:			No: <b>TSB-12-00-021</b>
<b>VIN PLATE AND VIN CHASSIS CODE CHARTS UPDATE – SERVICE MANUAL REVISION</b>			DATE: <b>October, 2012</b>
			MODEL: <b>2013 Outlander Sport</b>
CIRCULATE TO:	<input checked="" type="checkbox"/> GENERAL MANAGER	<input checked="" type="checkbox"/> PARTS MANAGER	<input checked="" type="checkbox"/> TECHNICIAN
<input checked="" type="checkbox"/> SERVICE ADVISOR	<input checked="" type="checkbox"/> SERVICE MANAGER	<input checked="" type="checkbox"/> WARRANTY PROCESSOR	<input checked="" type="checkbox"/> SALES MANAGER

**TSB Revision: TSB-12-00-021**

## PURPOSE

This Technical Service Bulletin updates the VIN Plate and VIN Chassis Code Charts of the General Section in the applicable service manual.

## AFFECTED VEHICLE

2013 Outlander Sport

## AFFECTED SERVICE MANUAL

2013 Outlander Sport, Group 00 – General: Vehicle Identification

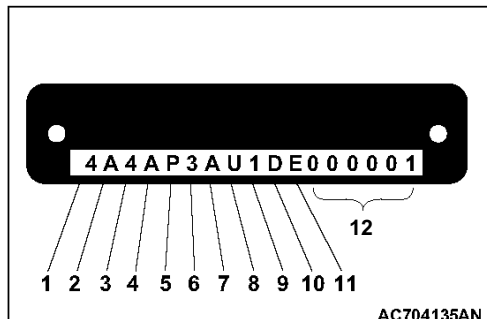
Continued

Copyright 2012, Mitsubishi Motors North America, Inc.

(3922)

The information contained in this bulletin is subject to change. For the latest version of this document, go to the Mitsubishi Dealer Link, MEDIC, or the Mitsubishi Service Information website ([www.mitsubishitechinfo.com](http://www.mitsubishitechinfo.com)).

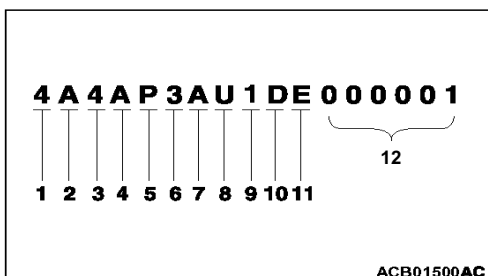
Please replace the VIN Plate Code Chart with the provided information:



**CODE CHART**

No.	Item	Content	
1	Country	4	USA
2	Manufacturer	A	Mitsubishi Motors North America, Inc.
3	Vehicle type	4	Multi-purpose vehicle
4	Others	Gross Vehicle Weight Rating/Passenger car Restraint System	
		A	4001-5000 lbs/Curtain Airbags (1st and 2nd Seat) and Seat-Mounted Side Airbags
5	Line	P	OUTLANDER SPORT (FWD) <Vehicles for USA and Puerto Rico>
		R	OUTLANDER SPORT (AWD) <Vehicles for USA and Puerto Rico>
		H	RVR (FWD) <Vehicles for Canada>
		J	RVR (AWD) <Vehicles for Canada>
6	Price class	3	Medium
		4	High
7	Body	A	5-door wagon
8	Engine	U	2.0 L DOHC MIVEC
9	Check digits*	0, 1, 2, 3, -----9, X	
10	Model year	D	2013 year
11	Plant	E	Bloomington
12	Serial number	000001 to 999999	

Please replace the VIN Chassis Code Chart with the provided information:



**CODE CHART**

No.	Item	Content	
1	Country	4	USA
2	Make	A	Mitsubishi Motors North America, Inc.
3	Vehicle type	4	Multi-purpose vehicle
4	Others	Gross Vehicle Weight Rating/Passenger car Restraint System	
		A	4001-5000 lbs/Curtain Airbags (1st and 2nd Seat) and Seat-Mounted Side Airbags
5	Line	P	OUTLANDER SPORT (FWD) <Vehicles for USA and PUERTO RICO>
		R	OUTLANDER SPORT (AWD) <Vehicles for USA and PUERTO RICO>
		H	RVR (FWD) <Vehicles for Canada>
		J	RVR (AWD) <Vehicles for Canada>
6	Price class	3	Medium
		4	High
7	Body	A	5-door wagon
8	Engine	U	2.0 L DOHC MIVEC
9	Check digits*	0, 1, 2, 3, -----9, X	
10	Model year	D	2013 year
11	Plant	E	Bloomington
12	Serial number	000001 to 999999	

*NOTE: \*: Check digit means a single number, or letter X, used to verify the accuracy of transcription of vehicle identification number.*