

1 8 30-12



Service Information Bulletin

SUBJECT	DATE
SPN 520326/FMI 4 – GHG14	August 2012

Additions, Revisions, or Updates

Publication Number / Title	Platform	Section Title	Change
DDC-SVC-MAN-0084	GHG14 DD Platform	SPN 520326/FMI 4 – GHG14	This is a new diagnostic.



13400 Outer Drive, West, Detroit, Michigan 48239-4001
 Telephone: 313-592-5000
www.demanddetroit.com

2 SPN 520326/FMI 4 – GHG14

This diagnostic is typically Over-pressurized Diesel Exhaust Fluid (DEF) System.

Table 1.

SPN 520326/FMI 4	
Description	This diagnostic is typically an over-pressurized DEF system.
Monitored Parameter	DEF pump speed vs. DEF Pressure.
Typical Enabling Conditions	DEF pump enabled OR on-off-cycle request.
Execution Frequency	Continuous when enabling conditions met.

NOTE: Retain a log file if Detroit™ Customer Assistance is required.

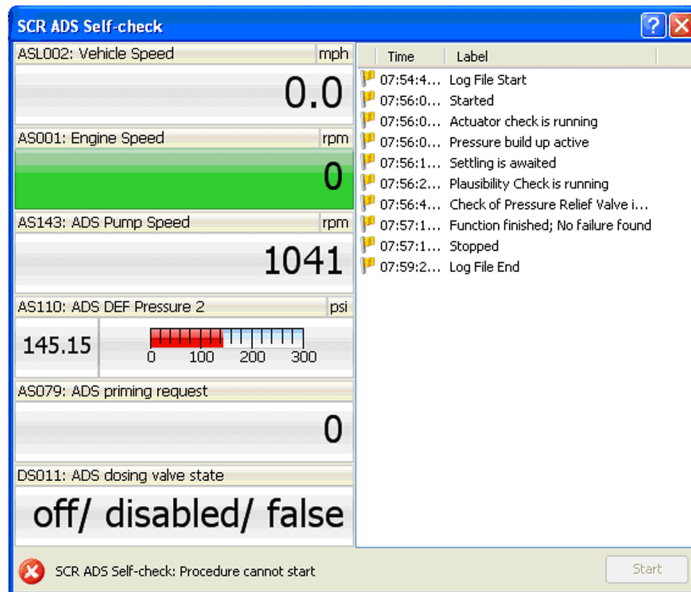
1. Connect DDDL 7.08 SP2 or higher.
2. Turn the ignition ON (key ON, engine OFF).
3. Check for multiple codes.
 - a. If other faults are active, in addition to SPN 4334/FMI 3,4, or SPN 4374/FMI 3,4 troubleshoot the other faults first.
 - b. If only SPN 520326/FMI 4 is present, Go to step 4.
4. Inspect the DEF dosing unit & DEF pump harness wiring and connector for damage, wire chafing, bent, spread or corroded pins.
 - a. If damage is found, repair as necessary. Go to step 7.
 - b. If no pin damage is found, Go to step 5.
5. Visually check all DEF lines for physical damage (kinks, cracks, leaks, disconnect).
 - a. If damage is found, repair as necessary; Go to step 7.
 - b. If no damage is found, Go to step 6.



WARNING: EYE INJURY

To avoid injury from flying debris when using compressed air, wear adequate eye protection (face shield or safety goggles) and do not exceed 276 kPa (40 psi) air pressure.

6. Remove the DEF return line from DEF Dosing Unit to DEF Tank. Refer to section "Removal of the Diesel Exhaust Fluid Line Connections". Purge line, pump and dosing unit with regulated, clean shop air. Is a restriction found?
 - a. If a restriction is found, isolate hose or component at a time. Repair as necessary; Go to step 7.
 - b. If no restriction is found, Go to step 7.
7. Perform SCR ADS Self Check Routine. Did the ADS test pass with DEF pump speed and DEF pressure values in normal range?
 - a. Yes; Clear codes and release vehicle.
 - b. No; Contact Customer Support Center at 1-800-445-1980.



d500089

Table 2.

Normal DEF Pump Speed: > 750 RPM, DEF Pump Speed < 1800 RPM
Normal DEF Pump Pressure: > 9000 mbar, DEF Pressure < 11000 mbar (130-160 PSI)