



Service Bulletin

PRELIMINARY INFORMATION

Subject: Carpet Pulls Loose from Under Console

Models: 2012-2013 Chevrolet Corvette
Built Prior to October 15, 2012

Condition/Concern



Some customers may comment that the carpet is loose and pulled away from under the console and will not stay tucked in.

Recommendation/Instructions

Technicians should cut slots in the carpet at the door inside manual release actuator and shift the carpet to fit under console following the procedure below:

1. Remove the driver or passenger seat.

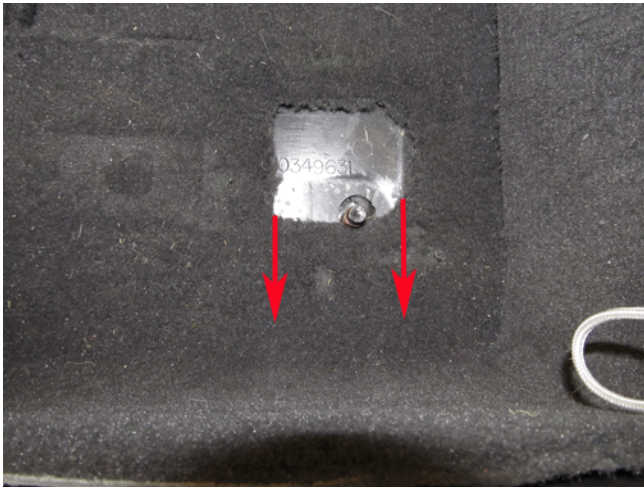
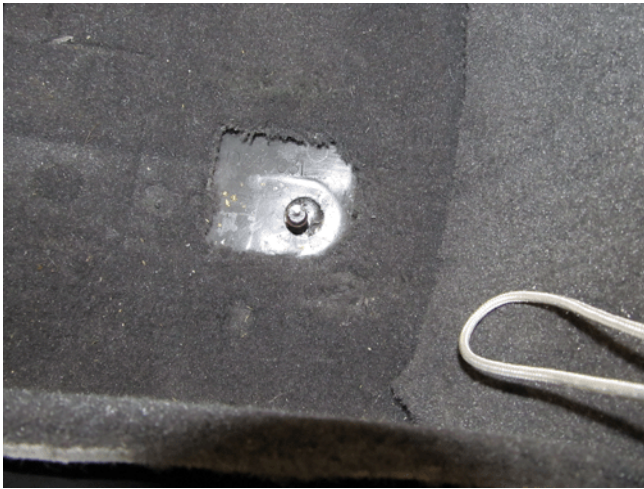
2. Remove the door sill trim plate.
3. Remove the driver side foot rest bracket if required.
4. Remove the door inside manual release actuator.



5. Fold over the carpet where the release actuator holes are and measure 22 mm (7/8 in) as shown above.



6. Carefully cut slots in the carpet as shown above.



Note: Cut a 13 mm (1/2 in) slit in the carpet at the seat mounting point shown above.

7. Lift the intermediate carpet and pull the carpet towards the console and tuck under. Adjust as necessary. Refer to the before and after pictures above where the carpet fits at the seat mounting points for reference.
8. Install the driver or passenger seat.
9. Install the door inside manual release actuator.
10. Install the driver side foot rest bracket if required.
11. Install the door sill trim plate.

Warranty Information

For vehicles repaired under warranty, use:

Labor Operation	Description	Labor Time
C9532*	Adjust Driver or Passenger Side Carpet	0.7 hr
Add	To Adjust Other Side	0.5 hr
*This is a unique labor operation for bulletin use only. It will not be published in the Labor Time Guide.		

GM bulletins are intended for use by professional technicians, NOT a "do-it-yourselfer". They are written to inform these technicians of conditions that may occur on some vehicles, or to provide information that could assist in the proper service of a vehicle. Properly trained technicians have the equipment, tools, safety instructions, and know-how to do a job properly and safely. If a condition is described, DO NOT assume that the bulletin applies to your vehicle, or that your vehicle will have that condition. See your GM dealer for information on whether your vehicle may benefit from this information.



WE SUPPORT VOLUNTARY TECHNICIAN CERTIFICATION