



Tech Tips

TT 61-12-01

Date: January 20, 2012

2012-2013 EOS – Convertible Top Operation Stops, Trunk Does Not Lock Properly and/or Right Flap does not close

March 18, 2016: Update to model year applicability.

Some 2012-2013 EOS convertible tops may not function properly during opening or closing. The trunk lock operation may not complete, which can cause trunk to be inoperative and/or parcel shelf flaps to remain open when top opening cycle has completed. This may affect the G562, G563, or G564 sensors when running the test plan or looking at MVB 2. The guide bushing at the back of the lock mechanism (location circled in figure 1 below) may not align with the guide pin mounted on the body. It is necessary to remove trim on lock mechanism to inspect guide bushing. Misalignment of lock mechanism can cause damage to the guide bushing. The lock mechanism will need to be adjusted and the guide bushing replaced in most instances.

To repair, open the trunk to access the underside of the parcel shelf. Remove the guide bushing if it is damaged. Loosen the 2 lock mechanism mounting nuts shown in figure 3 below on the underside of the parcel shelf (be sure to only loosen these 2 nuts due to pretension on the lock assembly). Adjust the locking mechanism so that the rear alignment guide pin is centered in the guide bushing hole. Resecure the 2 mounting nuts to 22NM. Close the trunk and cycle the top to check functionality. If the guide bushing was found to be damaged, replace with part number 1Q0898162A (see ETKA for latest supersession).



Figure 1: Overview of location on vehicle

Service Information

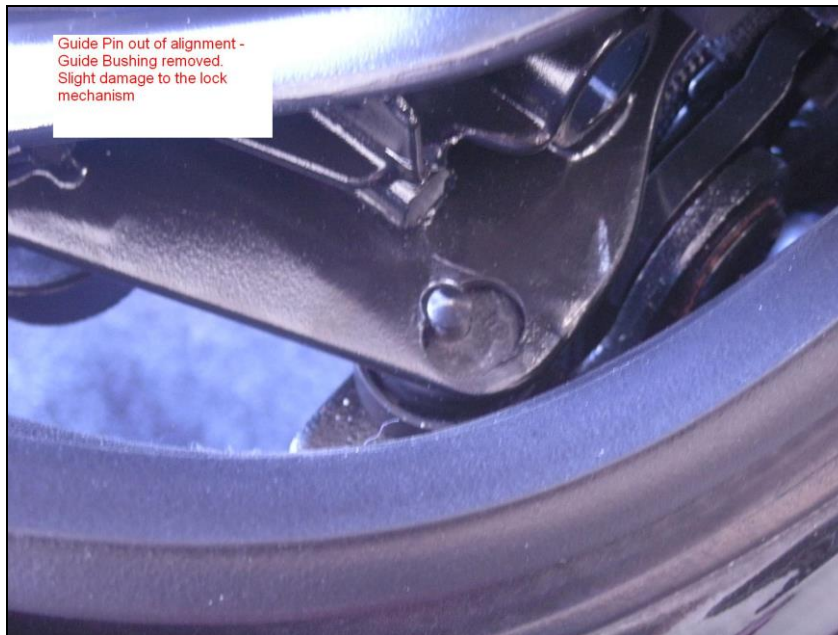


Figure 2: Guide pin out of alignment (shown with bushing removed)



Figure 3: Lock mechanism mounting nuts

Service Information

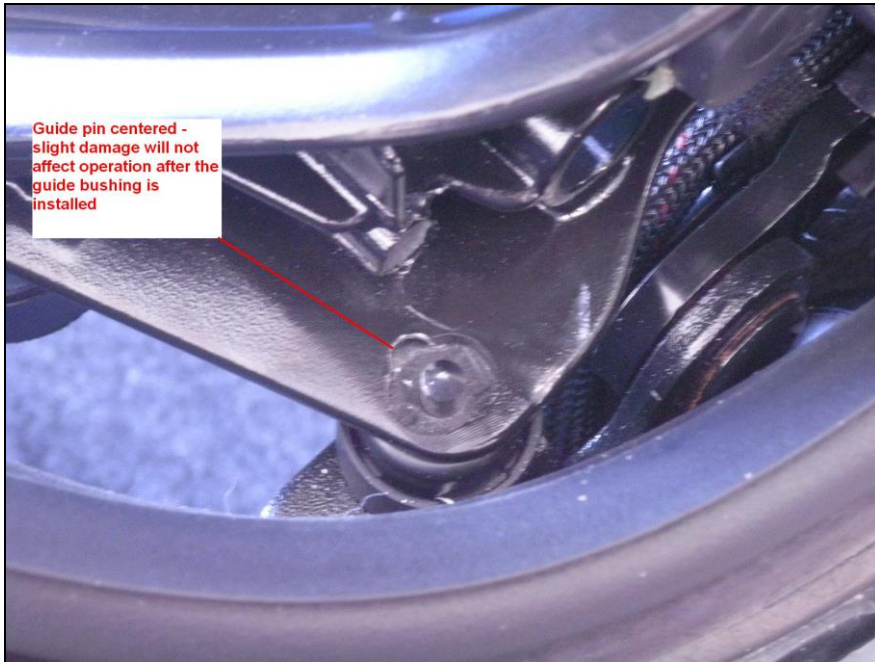


Figure 4: Guide pin centered after adjustment and before installation of new guide bushing.