



Service Bulletin

PRELIMINARY INFORMATION

Subject: Diagnosing Dome Lamp and/or Back Up Lamps Inoperable with F32UA 20 Amp Fuse Open, DTC B2545 01, B2545 04, B3950 01 and/or B3950 04 Set

Models: 2011-2012 Chevrolet Cruze
Equipped with Sunroof (RPO CF5)
Built Prior to VIN Breakpoint C7400005

Condition/Concern

In rare cases, some customers may comment that the dome lamp is inoperable. Additionally, in less cases the customer may comment that the back up lamps or left turn signal are inoperable. Technicians may find DTC B2545 01, B2545 04, B3950 01 and/or B3950 04 set.

One potential cause of the concern could be an open F32UA 20 amp fuse. This fuse can open when a pin on the underside of the dome lamp makes contact with the sunroof cross bar when external force is applied to the dome lamp switch.

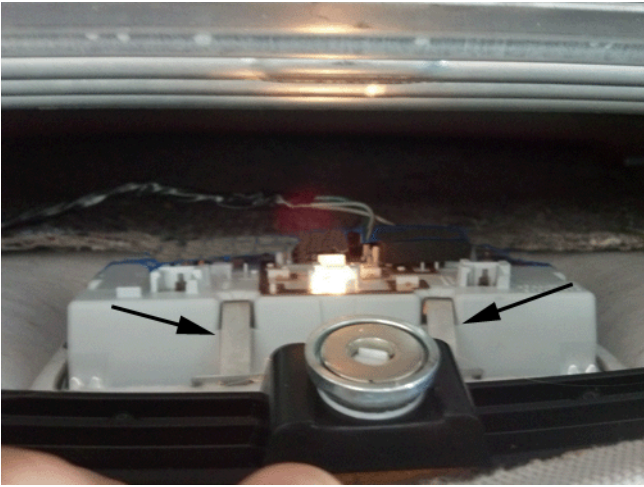
Recommendation/Instructions

When diagnosing for this condition, perform the following steps. If the fuse is not open, follow diagnostics in SI.

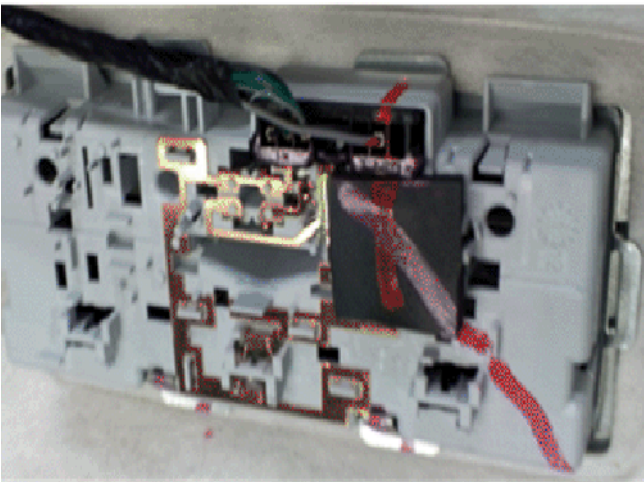
1. Inspect the 20 Amp F32UA fuse to determine if it is open.
 - If the fuse is open, proceed to step 2.
 - If the fuse is not open, refer to Dome Lamps Malfunction in SI.
2. Check for a short to ground on circuit 157.
 - If there is no short, proceed to step 3.
 - If there is a short, repair the circuit.



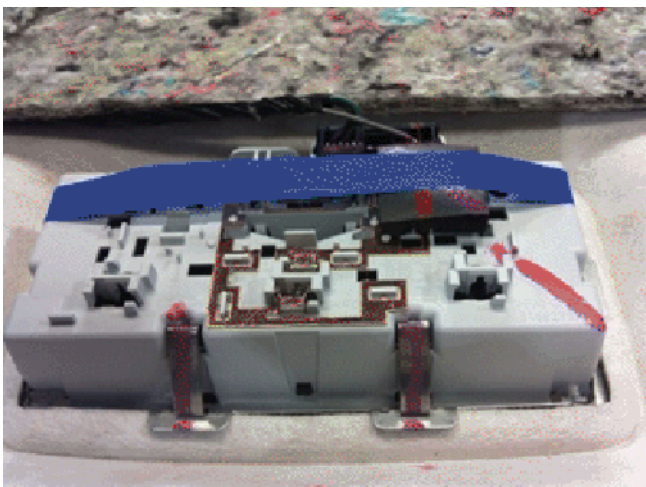
3. Carefully lower the edge of the headliner at the sunroof opening (There is a strong magnet holding the headliner in place).



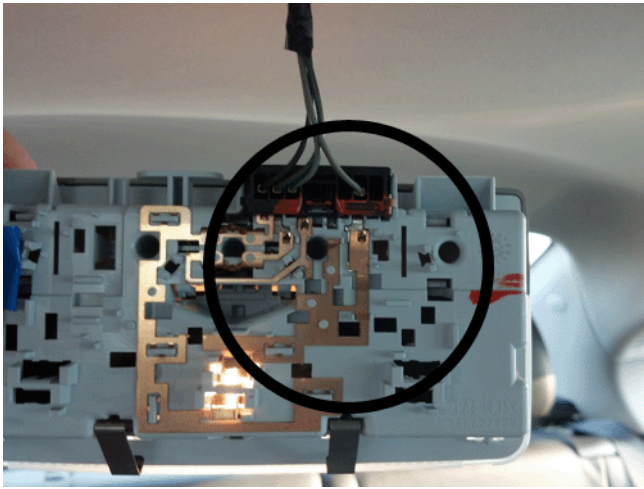
4. Remove the dome lamp from the headliner by releasing the retainer tabs.
5. Disconnect the electrical connection from the dome lamp.



6. Inspect the back of the dome lamp to ensure the foam block is in place.



- 6.1. If the foam block is in place, install a piece of tape and place across the foam block and over both edges as shown below.



- 6.2. If the foam block is missing or misaligned, install the foam block in the proper location and install a piece of tape and place across the foam block and over both edges.
7. Connect the electrical connection to the dome lamp.
8. Install the dome lamp into the headliner.
9. Clear any DTCs.

Parts Information

Part Number	Description
46510 (or Equivalent)	Kent Adhesive Back Shim Stock (25 mm x 25 mm)

Warranty Information

For vehicles repaired under warranty, use:

Labor Operation	Description	Labor Time
C9525*	Install Tape and/or Adhesive Back Shim Stock to Dome Lamp	0.3 hr

*This is a unique labor operation for bulletin use only. It will not be published in the Labor Time Guide.

GM bulletins are intended for use by professional technicians, NOT a "do-it-yourselfer". They are written to inform these technicians of conditions that may occur on some vehicles, or to provide information that could assist in the proper service of a vehicle. Properly trained technicians have the equipment, tools, safety instructions, and know-how to do a job properly and safely. If a condition is described, DO NOT assume that the bulletin applies to your vehicle, or that your vehicle will have that condition. See your GM dealer for information on whether your vehicle may benefit from the information.



WE SUPPORT VOLUNTARY TECHNICIAN CERTIFICATION