



Service Bulletin

PRELIMINARY INFORMATION

Subject: Service Park Brake Message C0558

Models: 2013 Chevrolet Malibu

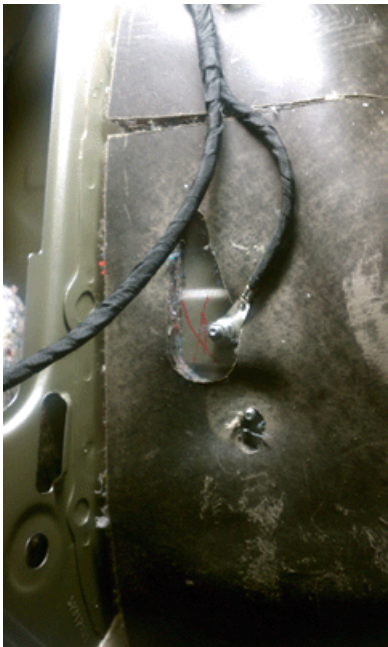
The following diagnosis might be helpful if the vehicle exhibits the symptom(s) described in this PI.

Condition/Concern

A customer or technician may indicate there is a Service Park Brake Message displayed. The technician may indicate the following DTC's are set C0558 sym5A and/or C0558 sym55. The park brake may not release or cannot perform park brake calibration in GDS2.

Recommendation/Instructions

Please check that G401 is secure and there is no paint or tape affecting contact. See picture below left rear wheel house.



Please follow this diagnostic or repair process thoroughly and complete each step. If the condition exhibited is resolved without completing every step, the remaining steps do not need to be performed.

GM bulletins are intended for use by professional technicians, NOT a "do-it-yourselfer". They are written to inform these technicians of conditions that may occur on some vehicles, or to provide information that could assist in the proper service of a vehicle. Properly trained technicians have the equipment, tools, safety instructions, and know-how to do a job properly and safely. If a condition is described, DO NOT assume that the bulletin applies to your vehicle, or that your vehicle will have that condition. See your GM dealer for information on whether your vehicle may benefit from the information.



WE SUPPORT VOLUNTARY TECHNICIAN CERTIFICATION