



## INSTRUCTION TO SERVICE

<b>ITS: 5019</b>	
<b>SECTION:</b>	219 Engine and Transmission
<b>WRITTEN BY:</b>	Shaun Cardinal
<b>SUBJECT:</b>	UCAP Cabinet Cover (Mono)

# ITS5019

THIS DOCUMENT AND THE CONTENTS DISCUSSED HEREIN ARE THE CONFIDENTIAL AND PROPRIETARY INFORMATION OF NEW FLYER INDUSTRIES CANADA ULC AND NEW FLYER OF AMERICA INC. AND ARE DISCLOSED BY NEW FLYER IN CONFIDENCE. THIS DOCUMENT AND THE CONTENTS HEREIN ARE NOT TO BE DISCLOSED BY THE INTENDED RECIPIENT WITHOUT THE PRIOR WRITTEN AUTHORIZATION OF NEW FLYER. ANY UNAUTHOIZED DISCLOSURE, REPRODUCTION OR OTHER DISTRIBUTION OF THIS DOCUMENT OR INFORMATION IS STRICTLY PROHIBITED AND MAY RESULT IN ACTION BEING TAKEN AGAINST THE PARTY MAKING THE UNAUTHORIZED DISCLOSURE. THIS DOCUMENT AND ALL COPIES HEREOF MUST BE RETURNED TO NEW FLYER UPON REQUEST.

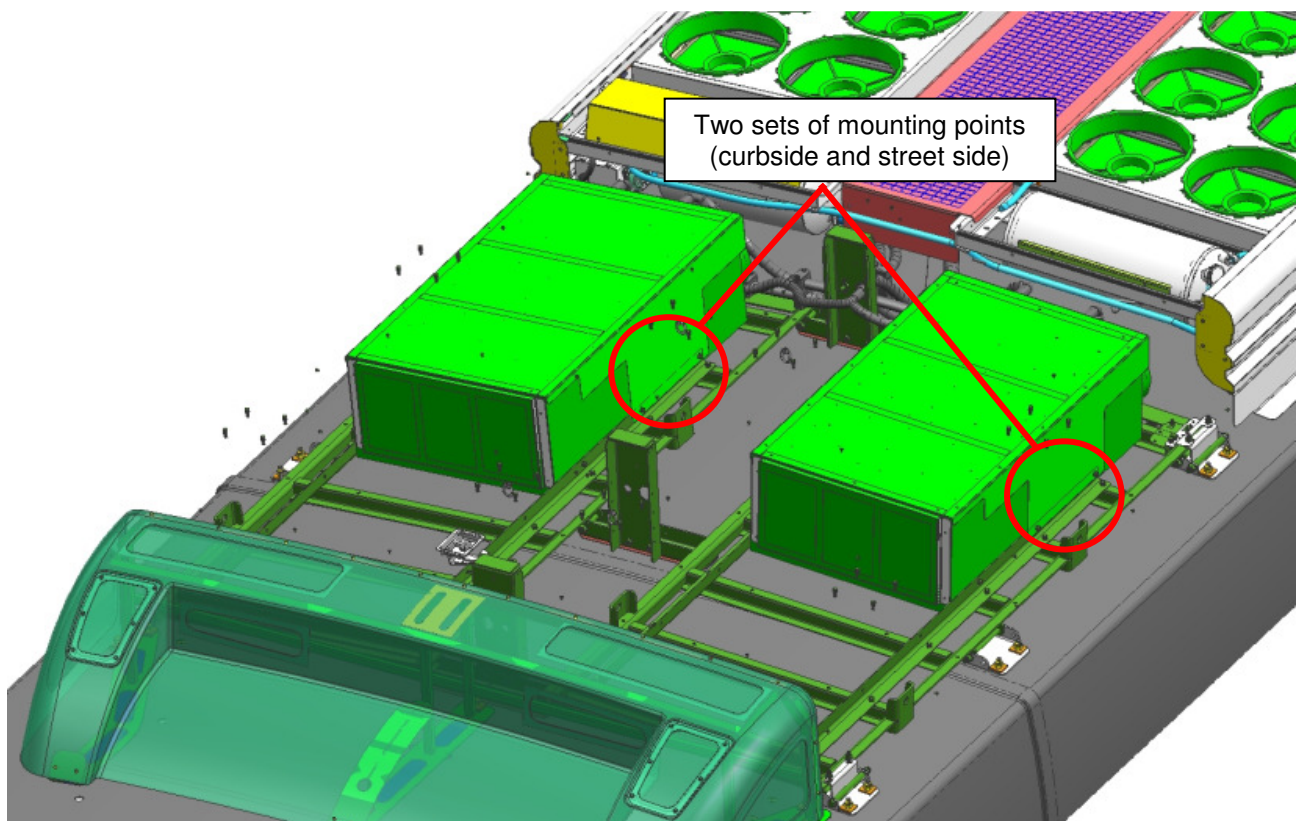
**PROCEDURE:**

1. Turn the main battery disconnect switch to the “OFF” position.

**⚠ WARNING:** ALWAYS discharge the Ultra Capacitors (UCAP) before performing high voltage system maintenance on this vehicle. Refer to Section 5 of the Service Manual under *2.17 Discharging the Ultra Capacitors* for the discharge procedure.

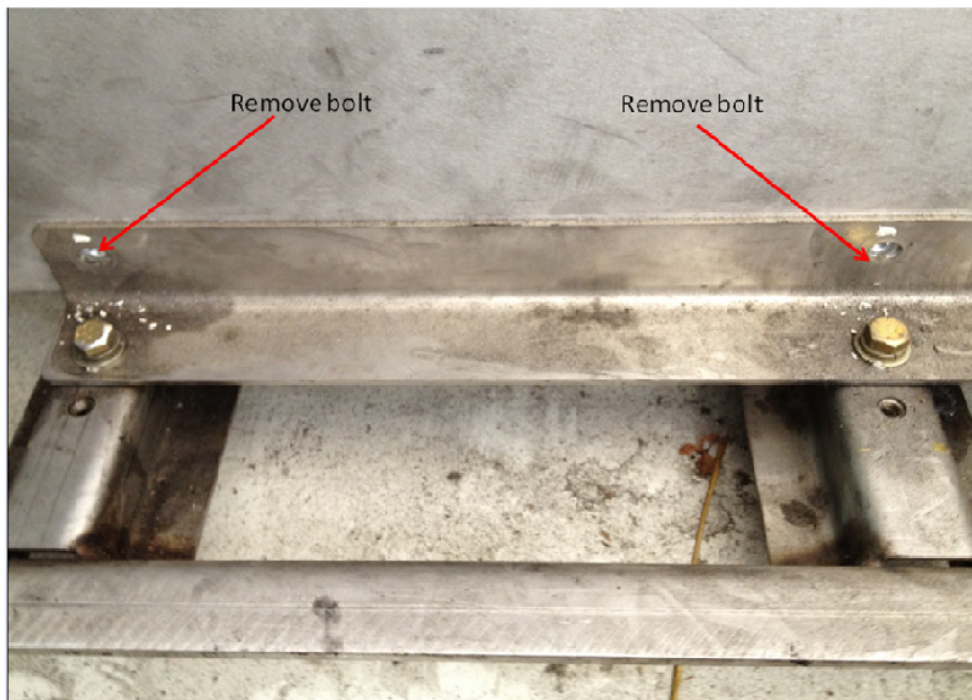
**2. COVER INSTALLATION**

- a. Locate the mounting points on the UCAP's (Fig 1).



**Fig 1 – Mono Mounted UCAP's (front air intake removed for clarity)**

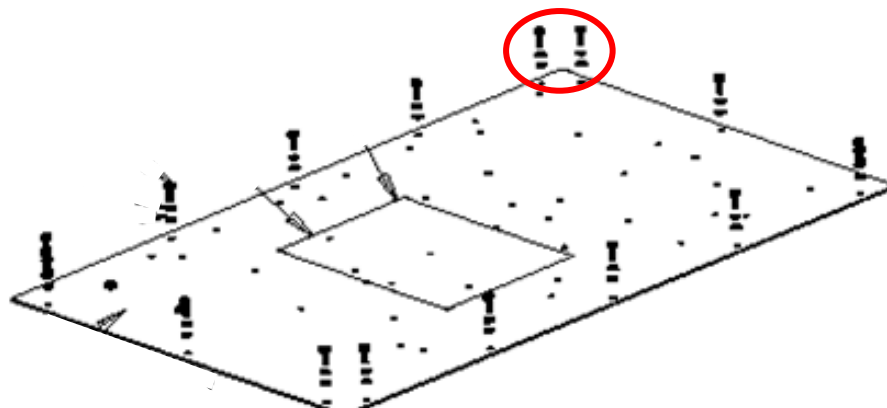
- b. Remove mounting hardware securing UCAP's to frame assembly (Fig 2)



*Fig 2 – Separately Mounted UCAP's*

- c. Remove all existing perimeter hardware (16x screws, washers, and lock washers per UCAP) securing the UCAP lid to UCAP box (Fig 3).

**⚠ NOTE:** Do not remove lid as it will break the weather tight seal.



*Fig 3 – UCAP Lid Hardware*



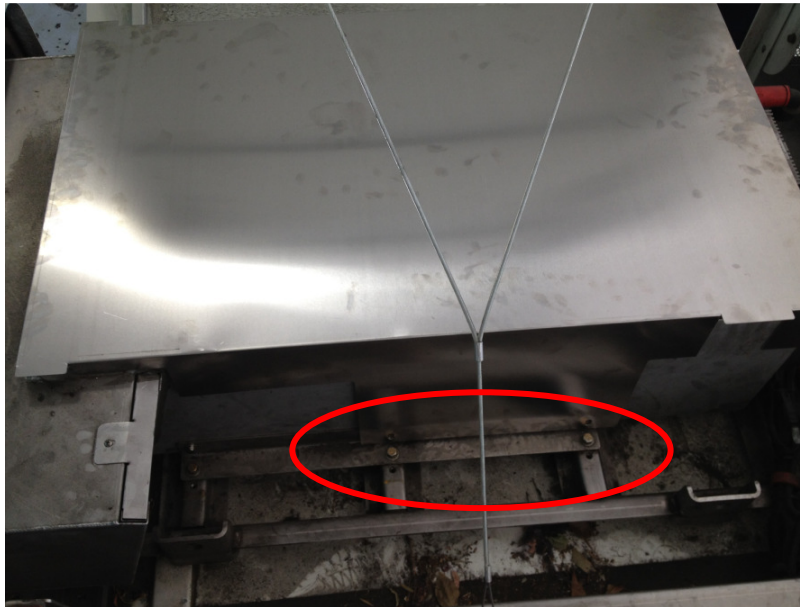
## NEW FLYER

- d. Replace hardware with new low profile hardware (**NFI PN 6409430**). Do not re-use the washers and lock washers.
- e. Install new cover assembly (**NFI PN 489806 and 5957793**) to both UCAP assemblies (See Fig 6). Lining up the UCAP mounting hardware to the slots on the cover. Fig 4

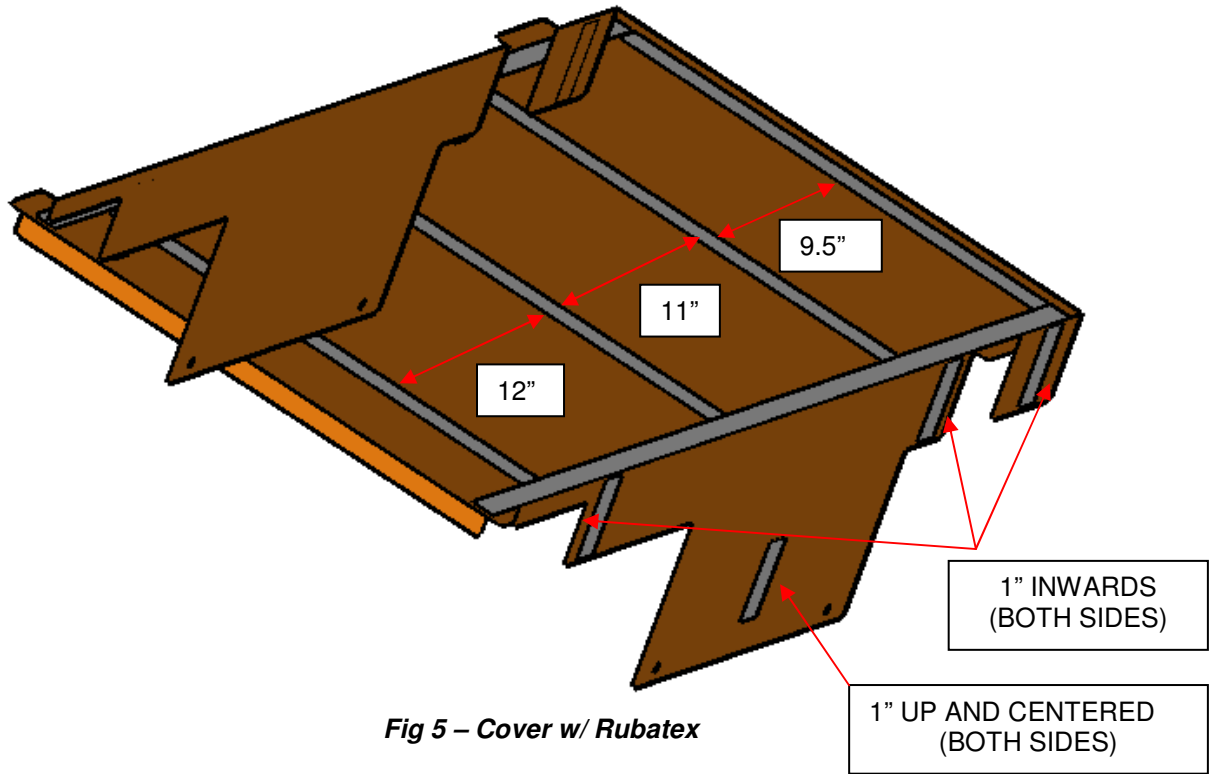


**Fig 4 – Installed Cover**

- f. Secure cover to the outside of the mounting bracket using new 5/16 washers (**NFI PN 50W05000**) and existing hardware. Fig 5



**Fig 5 – Secured Cover**





**NEW FLYER**

### LABOUR ESTIMATE

	Operation	Men	Hours	Labor Time M X HR
1	Install Mono UCAP Cover (Non-LFA Style Bus)	1	0.5	0.5

### PARTS REQUIRED

Item	Part Number	Description	Qty. per Coach	Units	Notes
1	489806	COVER-UCAP MONO	2	EA	
2	6409430	SCREW-FH 1/4-20 X 3/4LG LOW PROFILE	36	EA	
3	50W05000	WASHER-STAINLESS 5/16 FLAT	8	EA	
4	5957793	SEAL-RUBATX 1.0 X .06 TK	45	FT	