

NABI: Charge Air Cooler Pipe Bracket Rework



Prepared by: Kalman Takacs
Field Service Engineer
Phone (256) 241-1243
Fax (256) 832-0930

Approved by: Dan Allen
Chief Engineer

Property name and top bus number: 40LFW as applicable

Issue: Charge Air Cooler (CAC) pipe bracket is cracking.

Reason / cause: The bracket and its location were updated to enhance durability.

Solution: Install new CAC pipe bracket per this work instruction (SOI).

NABI: Charge Air Cooler Pipe Bracket Rework



Number of affected buses: as required

Estimate repair hours/bus: 30 minutes

Necessary parts:

Bracket, CAC,	NABI Part #: 634-2037 ,	1/bus,
Plate, CAC bracket,	NABI Part #: 634-2036 ,	1/bus,
Bolt, ¼-20x1.5, Hex, Gr8, Zn,	NABI Part #: 220420128 ,	2/bus,
Nut, ¼-20, Nylock, Gr8, Zn,	NABI Part #: 210420N ,	2/bus,
Washer, flat, ¼, Gr8, Zn,	NABI Part #: 2604H ,	2/bus,

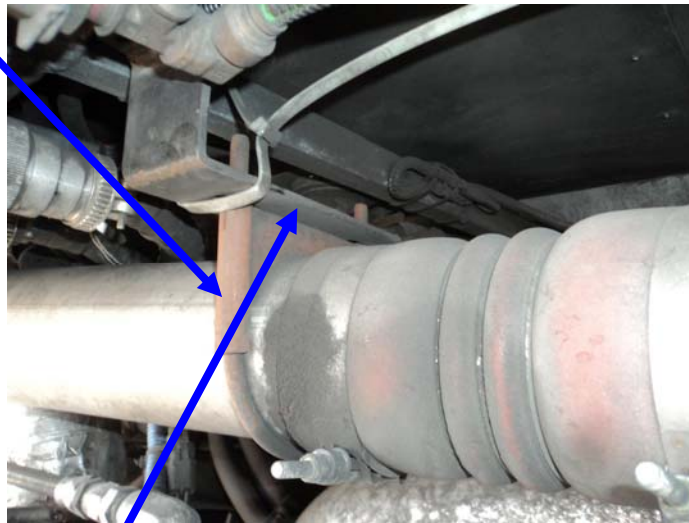
Necessary tools: 7/16 and 9/16 sockets and wrenches

NABI: Charge Air Cooler Pipe Bracket Rework



SAFETY PRECAUTIONS MUST BE FOLLOWED ACCORDING TO ACCEPTED INDUSTRY STANDARDS AND LOCAL/PROPERTY REQUIREMENTS.

1. Park the bus on a flat surface.
2. Apply the parking brake.
3. Place wheel chocks underneath the front wheels.
4. Turn the battery disconnect switch off.
5. Turn the engine run switch to off position (middle position).
6. Open the rear engine compartment door.
7. Remove U-bolt that secures the CAC pipe to the bracket.



8. Remove and discard CAC pipe bracket.
9. Install new CAC bracket with U-bolt. Hand tight nuts.
10. Secure CAC bracket to the structural tube located above the CAC pipe with plate, ¼-20 bolts, washers and locknuts.



NABI: Charge Air Cooler Pipe Bracket Rework



11. Ensure that the CAC pipe is not rubbing the control box and/or harnesses. Check that the rubber hose and elbow at the end of the CAC pipe are aligned and free of tension. Move pipe as required then tighten mounting bolts and U-bolt nuts.



Ensure that the CAC pipe is not rubbing the control box

12. Make sure that all of the tools and unused parts are removed from the engine compartment.
13. Turn the engine run switch to 'Front' position.
14. Turn the battery disconnect switch on.
15. Record bus number, mileage and date of completion.
16. Continue to inspect CAC components per Maintenance Manual intervals.