

New Jersey Transit: CAC Closeout Hardware



Prepared by: John Gunter
Sr. Field Service Rep.
614-256-6046

Approved By: Dan Allen
Chief Engineer

Property and Top Bus Number: New Jersey Transit



Issue: Charge Air Cooler (CAC) closeout getting loose.

Reason/ cause: Lock washer was left off.

Solution: Add lock washer and replace closeout bracket if needed.

New Jersey Transit: CAC Closeout Hardware



Number of affected buses: all NJT

Estimate repair hours/bus: 15 minutes

Necessary parts:

3/8 lock washer

Part #: **2506,SS**

1/bus,

Bracket

Part #: **10B-1305-005**

as needed

Necessary tools:

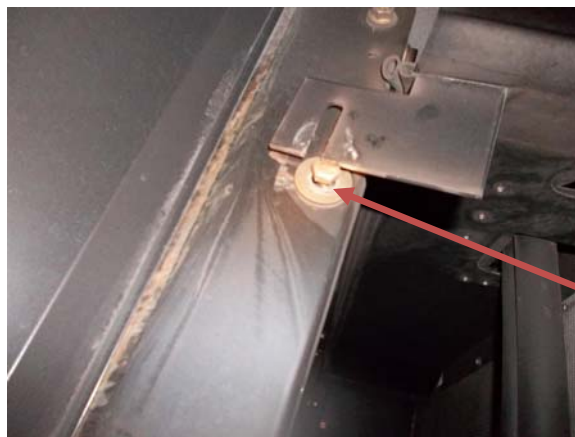
9/16 socket and ratchet.

New Jersey Transit: CAC Closeout Hardware



SAFETY PRECAUTIONS MUST BE FOLLOWED ACCORDING TO ACCEPTED INDUSTRY STANDARDS AND LOCAL/PROPERTY REQUIREMENTS.

1. Park the bus and apply the parking brake.
2. Turn off main battery disconnect switch(es).
3. Remove the screen on the curb side at the rear of the bus.
4. Remove the bolt of the closeout panel bracket and add a lock washer. Replace bracket if broken.



Add lock washer here

5. Check for completeness of work.
6. Remove all tools from working area.
7. Turn the main battery disconnect switch(es) on.