

REFERENCE:	Nova Bus Manuals
SECTION:	12 Interior furnishing
RS N°:	MQR 7621-394
EFFECTIVE IN PROD.:	L681-90(PLB), L715(STE) (2012JL10)

APPLICATION DEADLINE: 2013DE28

SUBJECT:	Grab handle spool
JUSTIFICATION:	Grab handle spool breaking

LEVEL	DESCRIPTION	DIRECT CHARGES		TIME
		LABOUR	MATERIAL	
1	Replacement of grab handle spool	Nova Bus	Nova Bus	3hrs
2	–	–	–	–

MATERIAL

QTY	PART N°	REV.	DESCRIPTION	REPLACES PART N°
LEVEL 1				
2	0449535	–	Screw 10-32X1	–
*	N8900000	–	Grabhandle spool	–
LEVEL 2				
–	–	–	–	–

* Quantity varies per vehicle. Order quantity of spools according to number of grabhandles installed on your vehicle(s).

Materials will be available within 50 days. To order, please contact Prevost Parts by phone at 1-800-771-6682, by fax at 1-888-668-2555 or by email at prevostparts.commandes@volvo.com. Specify document number, quantity of parts required and shipping address.

DISPOSAL OF PARTS

REMOVED PARTS ARE:	DISCARDED *	RETAINED	* Dispose of the unused parts and the defective parts in accordance with local environmental standards in effect.
	Yes	–	

REVISION HISTORY

REV.	DATE	CHANGE DESCRIPTION	WRITTEN BY
NR	2012SE12	Initial release	Isabel Estañ

CLIENT	ORDER	ROAD NUMBER		VIN (2NVY/4RKY...)		QTY
		FROM	TO	FROM	TO	
New York City Transit - New York	L536	1200	1201	S92U793000490	S92U993000491	2
New York City Transit - New York	L545	1202	1289	S92U5A4000001	S92U0A4000098	88
New York City Transit - New York	L608	8000	8014	L82U6B4000047	L82U0B4000061	15
New York City Transit - New York	L620	8015	8074	L82U2B4000062	L82U7B4000123	60
New York City Transit - New York	L621	8075	8089	L82U9B4000124	L82U9B4000138	15
New York City Transit - New York	L643	8090	8090	S92U1B4000143	S92U1B4000143	1
New York City Transit - New York	L670	5771	5896	S92U9B4000147	S92U1B4000160	125
New York City Transit - New York	L681	5896	5984	S92U2C4500023	S92U2C4500118	89
New York City Transit - New York	L692	92001	92001			1

**WARNING**

Follow your internal safety procedures.

PROCEDURE

- 1.1. Remove all straps from the grab rails by releasing and removing the retaining clip and hardware. See Figure 1.

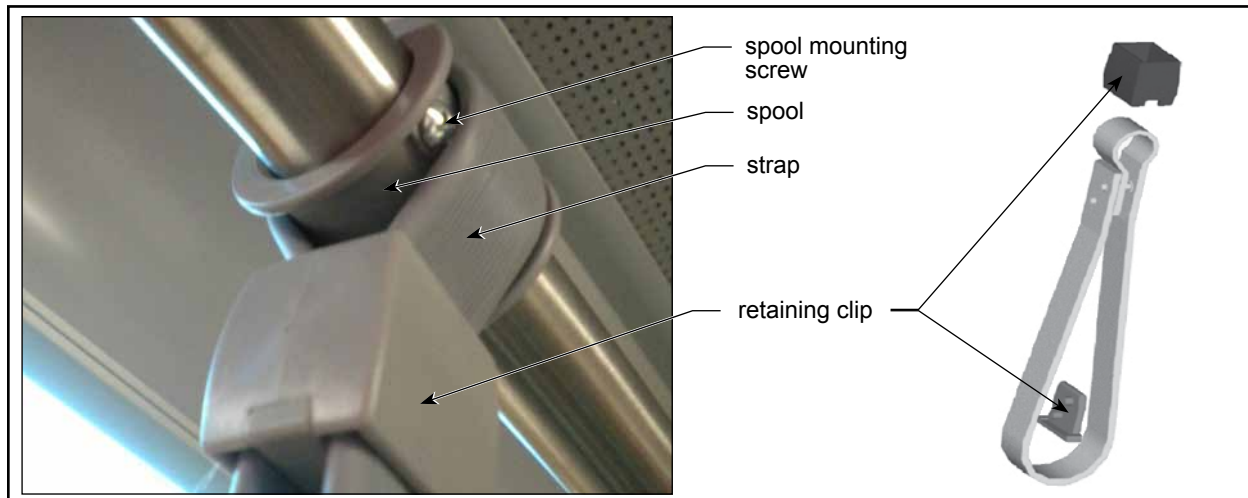


Figure 1 - Grabhandle

- 1.2. Remove the screw(s) from the spools. See Figure 1.
- 1.3. a) If the spools consist of two molded parts, remove the spools from the grabrail and skip forward to step 1.7.
b) If the spools consist of a single molded part, proceed with step 1.4., as the grabrails will need to be removed in order to release the spools.
- 1.4. Remove and retain the joints and their mounting screws from the grabrails on which the spools are located. See Figure 2.

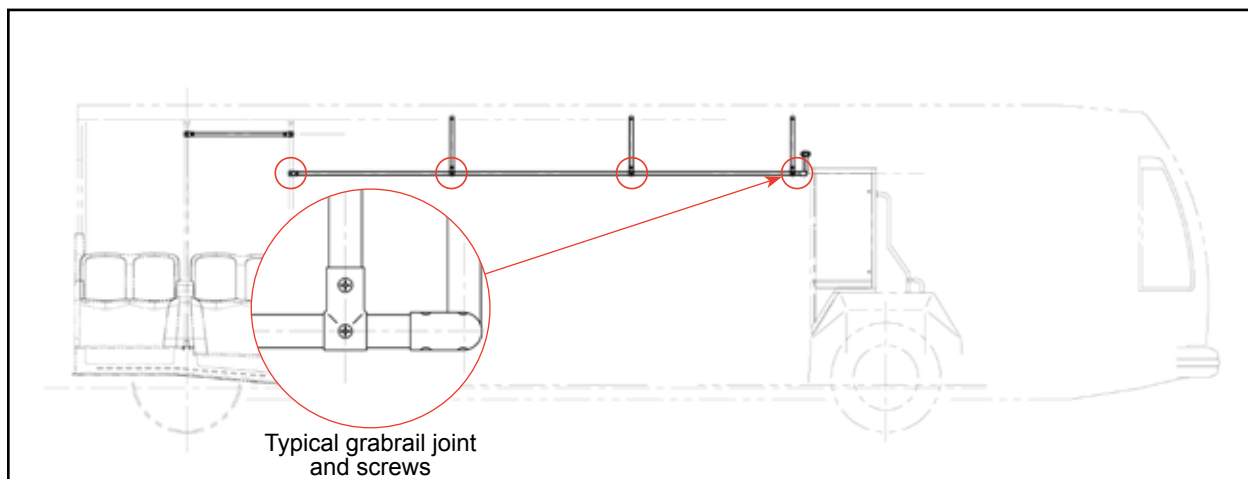


Figure 2 - Typical Grabrail

- 1.5. Lower the grabrail and slide off all of the spools.
- 1.6. With all spools removed, replace and secure the grabrail with the retained joints and hardware.
- 1.7. Mark and drill the new spool mounting holes according to Figure 3.

**NOTE**

The grabhandles are to be mounted in the same locations as previously installed on the grabrail. It is only the specific location and orientation of the new mounting screws which will vary.

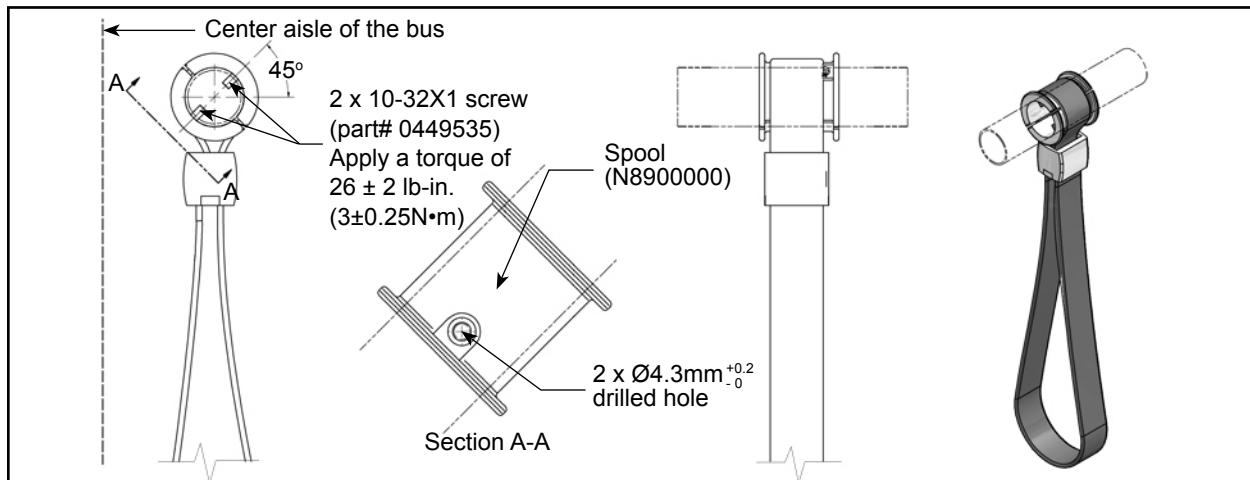


Figure 3 - New Spool Installation

**NOTE**

The 45 deg mounting angle, illustrated in Figure 3, is crucial to the proper installation of the grabhandle.

- 1.8. Install the new spools and secure them with the provided screws. Apply torque according to Figure 3.

**NOTE**

Accurate torquing of the spool screws, as per Figure 3, is crucial to the proper installation of the grabhandle.

- 1.9. Apply Loctite, or equivalent, to the screws.
- 1.10. Reinstall the grabhandle straps with the retained clips and hardware. ❖