



# Service Bulletin

File in Section: -

Bulletin No.: PI0852

Date: November, 2012

## PRELIMINARY INFORMATION

**Subject:** Carpet Pulls Loose from Under Console

**Models:** 2012-2013 Chevrolet Corvette  
Built Prior to October 15, 2012

**Condition/Concern**



2965674



2965675

Some customers may comment that the carpet is loose and pulled away from under the console and will not stay tucked in.

## Recommendation/Instructions

Technicians should cut slots in the carpet at the door inside manual release actuator and shift the carpet to fit under console following the procedure below:

1. Remove the driver or passenger seat.
2. Remove the door sill trim plate.
3. Remove the driver side foot rest bracket if required.
4. Remove the door inside manual release actuator.



2965677



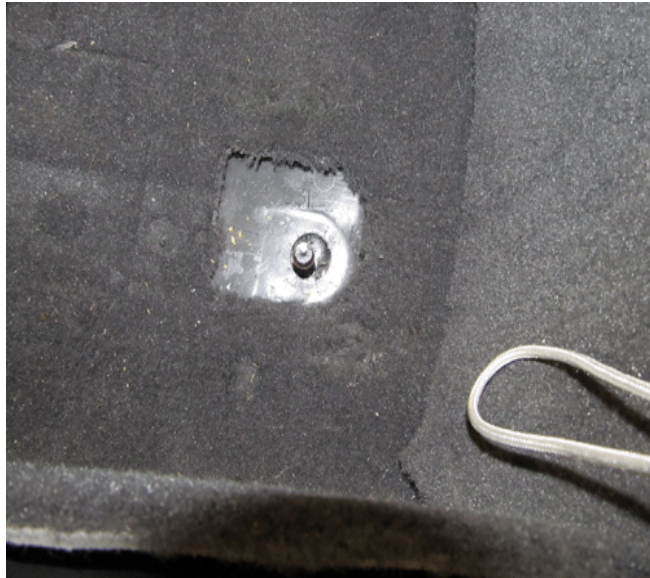
2965678

5. Fold over the carpet where the release actuator holes are and measure 22 mm (7/8 in) as shown above.



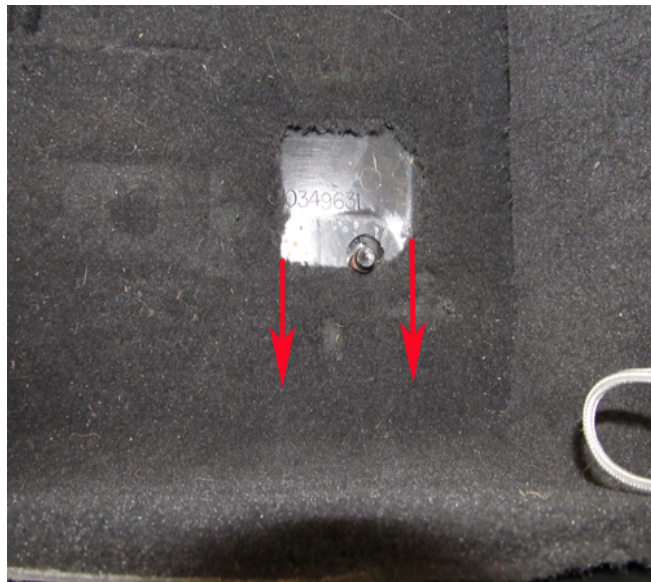
2965680

6. Carefully cut slots in the carpet as shown above.



2965682





2965683

**Note:** Cut a 13 mm (1/2 in) slit in the carpet at the seat mounting point shown above.

7. Lift the intermediate carpet and pull the carpet towards the console and tuck under. Adjust as necessary. Refer to the before and after pictures above where the carpet fits at the seat mounting points for reference.
8. Install the driver or passenger seat.
9. Install the door inside manual release actuator.
10. Install the driver side foot rest bracket if required.
11. Install the door sill trim plate.

## Warranty Information

For vehicles repaired under warranty, use:

Labor Operation	Description	Labor Time
C9532*	Adjust Driver or Passenger Side Carpet	0.7 hr
Add	To Adjust Other Side	0.5 hr
*This is a unique labor operation for bulletin use only. It will not be published in the Labor Time Guide.		