



Instructions Specifically Developed for Installation by Dealer Technicians

**Description: Beetle MDI accessory kit**

**Part Number: 5N0 057 342B**

**Vehicles: 2012+ Beetle**

**Revised: 11/6/2012**



**Warning**

- Read entire instructions thoroughly before starting
- Improper installation procedures can cause serious personal injury
- Installation should be performed only by a qualified technician
- Beware of sharp edges
- Always wear safety glasses to help protect eyes
- Use caution when using hand tools

© 2012 Volkswagen of America, Inc. All rights reserved. Information contained in this document is based on the latest information available at the time of printing and is subject to the copyright and other intellectual property rights of Volkswagen of America, Inc., its affiliated companies and its licensors. All rights are reserved to make changes at any time without notice. No part of this document may be reproduced, stored in a retrieval system, or transmitted in any form or by any means, electronic, mechanical, photocopy, recording or otherwise, not may these materials be modified or reposted to other internet sites, with the expressed written permission of the publisher.



Instructions Specifically Developed for Installation by Dealer Technicians

Kit contents:





Instructions Specifically Developed for Installation by Dealer Technicians

Required tools:



Trim removal tool



T20 Torx driver



Terminal removal tool

VAS 5052



VW00-1236

VAS 5051B or equivalent



Wire cutters



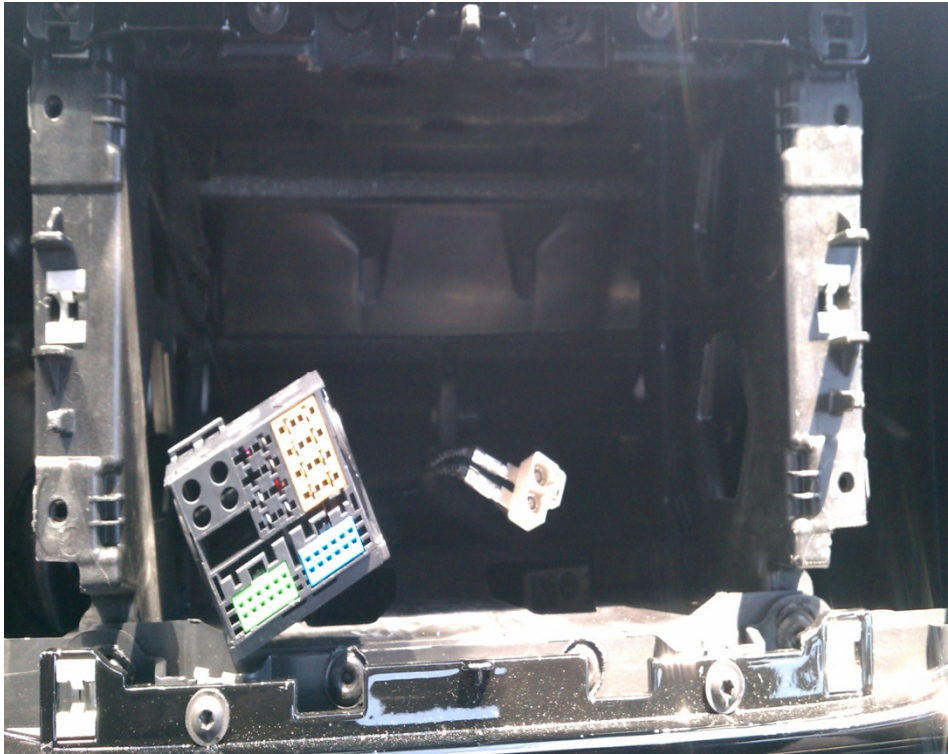
Razor knife



Instructions Specifically Developed for Installation by Dealer Technicians

Step 1

Disconnect vehicle battery

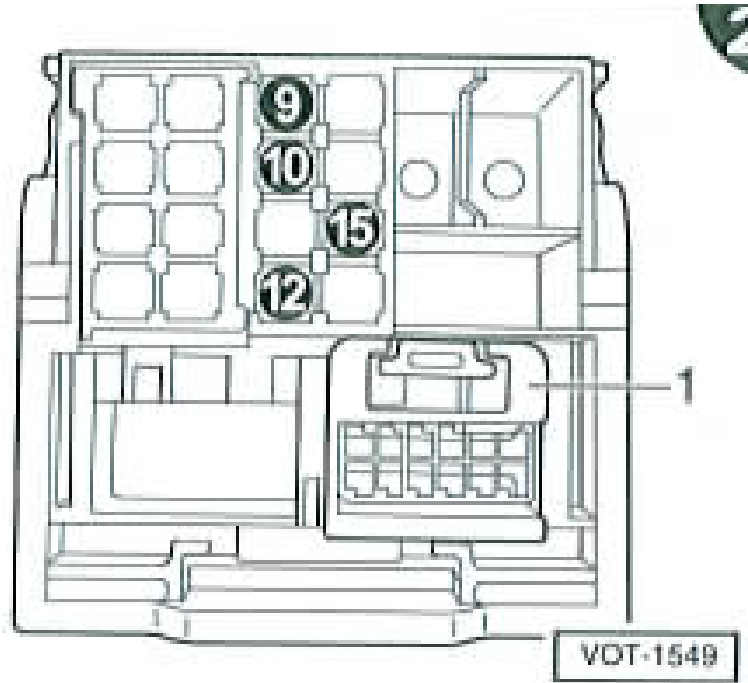


Step 2

Remove the radio. See instructions in Elsa. Unplug the wiring quad-lock connector and antenna.



Instructions Specifically Developed for Installation by Dealer Technicians



Step 3  
Remove the locking pin from the quad-lock connector.

Step 4

Wire Color	Remove Pin from quad-lock connector	Insert Pin into Black 2 Pin connector	Insert Pin into White 2Pin connector	Completed
Orange/green or orange/violet	Pin 9		Pin 1	
Orange/brown	Pin 10		Pin 2	
Red/yellow	Pin 15	Pin 1		
Brown		Pin 2		

Use a pin removal tool from VAS 1978 to remove the called out Pins from the quad-lock connector and insert them into the supplied flat contact housings according to the table. Check off the completed changes in the table column labeled "Completed."

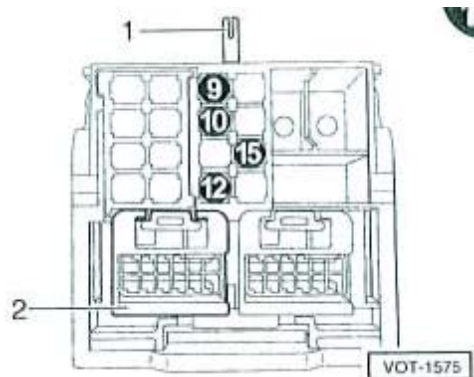


Instructions Specifically Developed for Installation by Dealer Technicians

Step 5

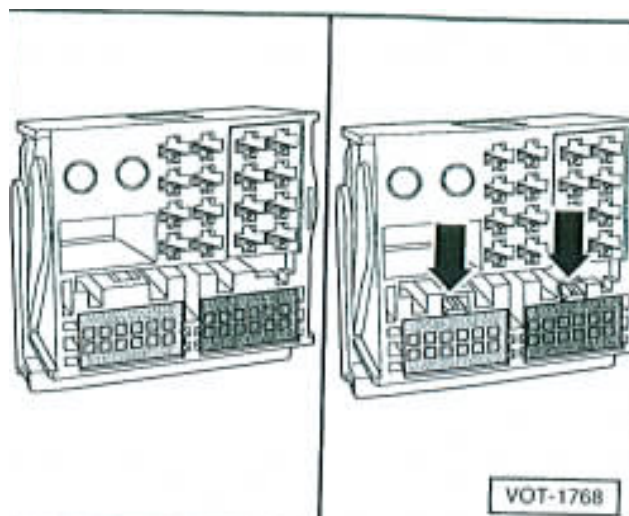
Wire Color	Insert Pin into quad-lock connector	Completed
Orange/green or orange/violet	Pin 9	
Orange/brown	Pin 10	
Red/yellow	Pin 15	
Brown	Pin 12	

Insert the individual wires of the MDI wiring harness into the quad-lock connector. Insert the locking pin back into the quad-lock connector. Check off the completed changes in the column labeled "Completed."



Step 6

Remove the blue auxiliary input block (2) from the quad-lock connector.



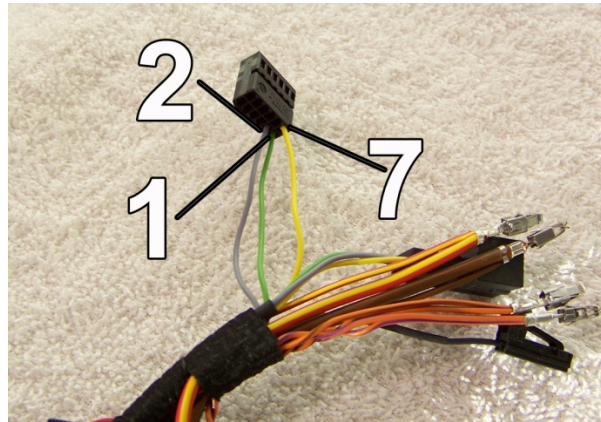
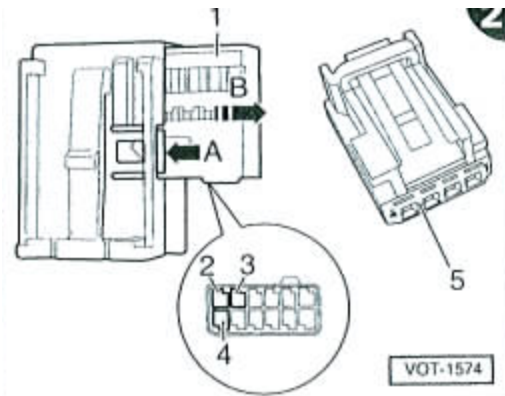




## Instructions Specifically Developed for Installation by Dealer Technicians

### Step 7

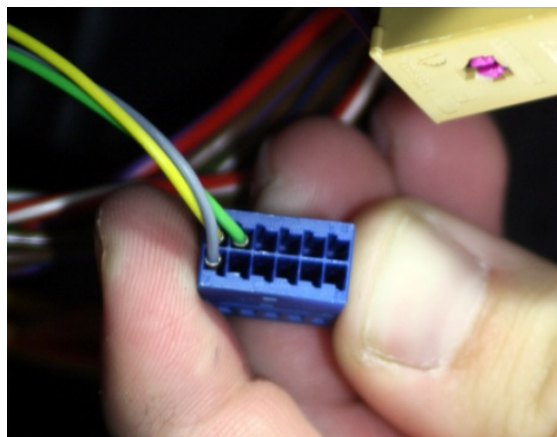
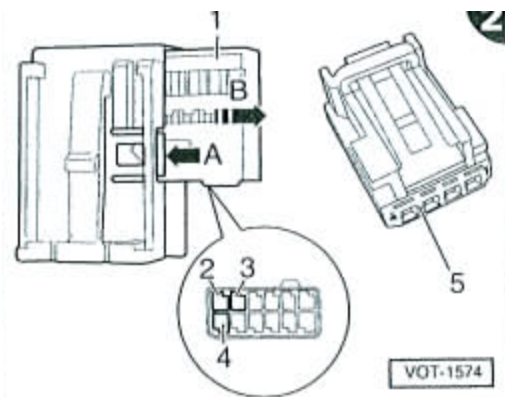
Use the one part blue plug supplied for the new auxiliary block connector.



### Step 8

Wire Color	Remove Pins from Blue Auxiliary Block Contact Connector	Insert Pins into supplied flat contact housing	Completed
Yellow	Pin 7 (4)	Pin 1	
Grey	Pin 2 (3)	Pin 3 5	
Green	Pin 1 (2)	Pin 2	

Push the wires marked from the blue auxiliary contact housing 1 and lock the contacts into the supplied 4-pin flat contact housing 5 according to the table. Check off the completed changes in the column labeled "Completed."



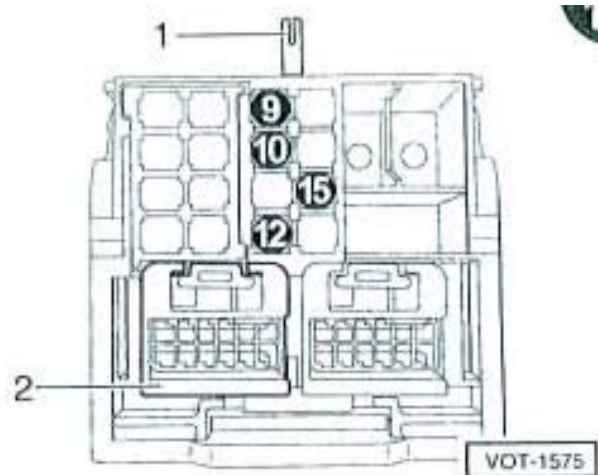


Instructions Specifically Developed for Installation by Dealer Technicians

Step 9

Wire Color	Insert Pins into supplied flat blade connector	Completed
Yellow	Pin B7 (4)	
Grey	Pin B2 (3)	
Green	Pin B1 (2)	

Assemble the flat blade connector 1 into the flat contact housing



Step 10

Plug the blue auxiliary input block of the wiring harness into the radio plug connector 2.

Step 11

Remove lower glove box assembly. Refer to Elsa web for removal and installation instructions.





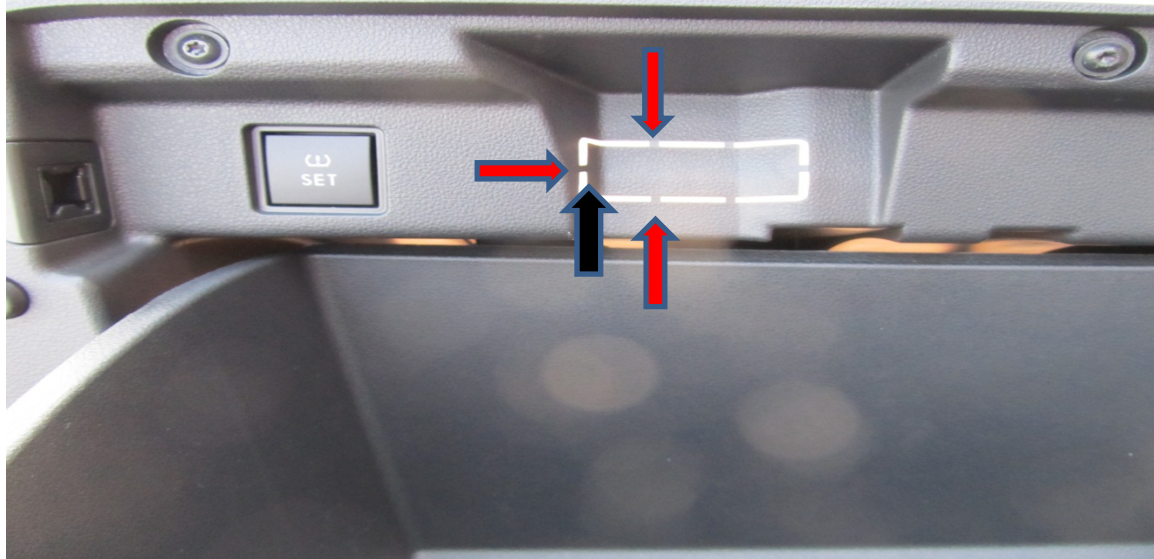
Instructions Specifically Developed for Installation by Dealer Technicians

Step 12



Mount MDI module to the heater case with cable ties and connect the harness to the module.

Step 13



Use a razor knife and cut the tabs and remove 1 corner of the knock out plug. See arrows above.



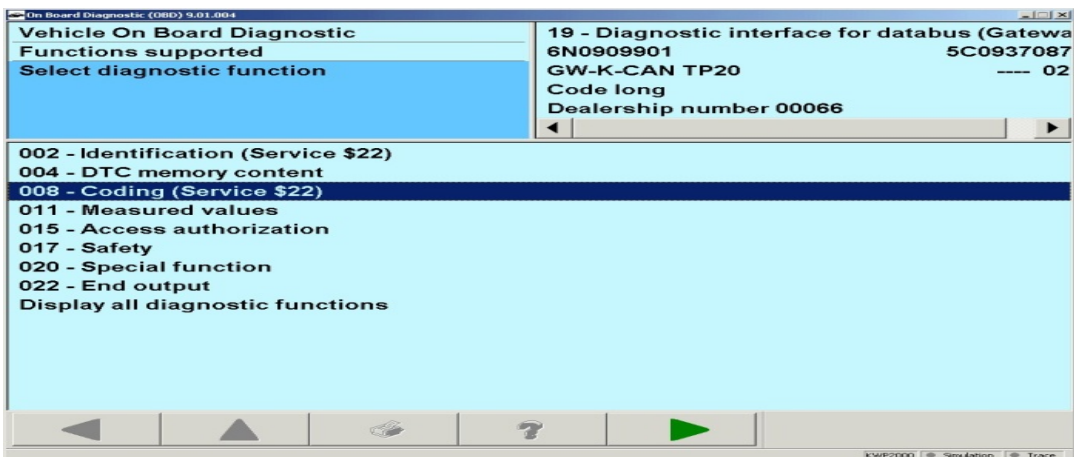
Instructions Specifically Developed for Installation by Dealer Technicians

### Step 14



Pass MDI extension cable through knock out plug. Re install glove box assembly. Re connect battery.

### Step 15

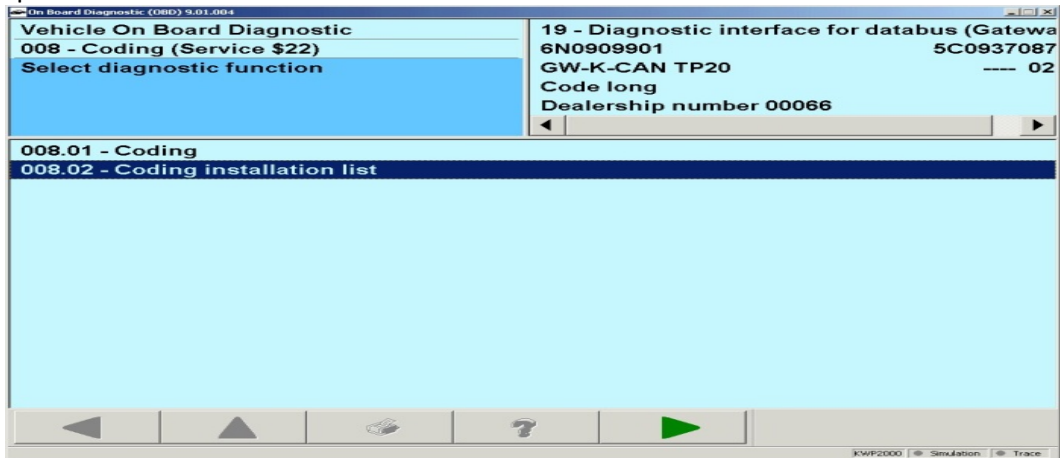


With the 5051B, code the MDI to the car. Go to Vehicle Self-Diagnosis and select 19 Diagnostic Interface for databus. Then select 008 coding (service \$22), and press the forward arrow.



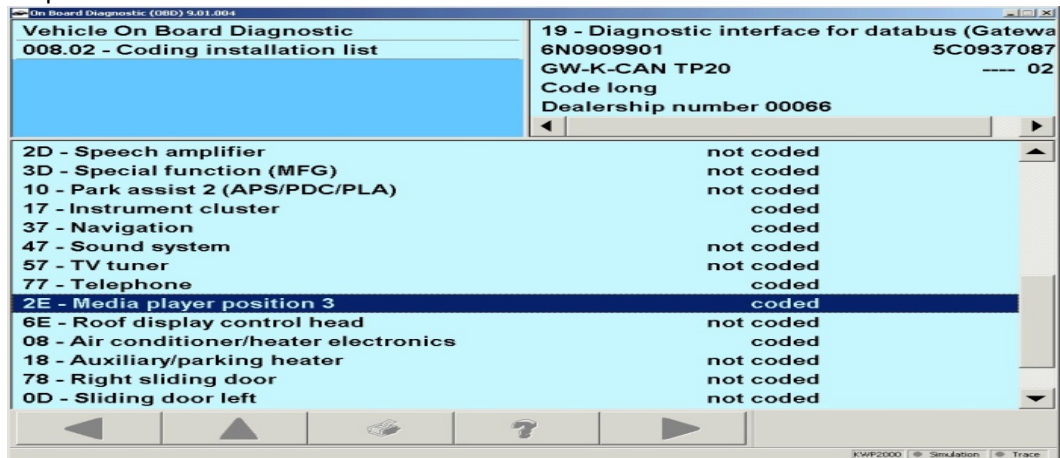
## Instructions Specifically Developed for Installation by Dealer Technicians

### Step 16



Select 008.02 Coding installation list, and press the forward arrow

### Step 17

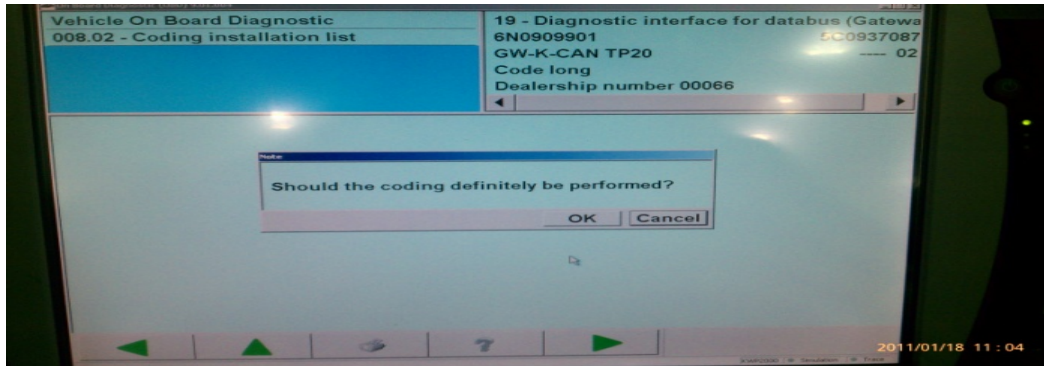


Highlight 2E- Media position 3 will now show coded.



## Instructions Specifically Developed for Installation by Dealer Technicians

### Step 18



The 5051B will now ask if coding should be performed. Select OK.

### Step 19

Perform a gateway scan and look for fault codes.



### Step 20

Test the operation of the MDI unit. Plug the device cable into the MDI and using the appropriate iPod device, play media through the audio system, verifying system operation