

CSC-10045199-3619

**Charging Cable Instruction Sheet Correction for
Certain 2012 Model Year Prius Plug-In Hybrid Vehicles**

[VIN]

Dear Toyota Owner:

We greatly appreciate your purchase of the 2012 Model Year Prius Plug-In Hybrid Vehicle

At Toyota, vehicle quality and your ownership experience is very important to us. Toyota has recently identified some necessary corrections to the Charging Cable Instruction Sheet provided for your vehicle.

What should you do?

Included with this letter is a corrected Charging Cable Instruction Sheet. Please review the corrected Charging Cable Instructions and replace the original instructions which contain a misprint. The original instructions were located in the luggage compartment with the charging cable.

If you are a vehicle lessor, please assist us by forwarding this notice to the lessee.

We have sent this notice in the interest of your continued satisfaction with our products, and we sincerely regret any inconvenience this condition may have caused you.

Thank you for driving a Toyota.

Sincerely,
TOYOTA MOTOR SALES, U.S.A., INC.

SAMPLE



Charging cable -cable Assy, Electric Vehicle Charger -

Parts No. G9060-47190
Parts No. G9060-47300

INSTRUCTION

This instruction describes especially important contents. See owners manual about details.

RATING	INPUT	110-120 V ~	12 A	60 Hz	Ambient temperature	-22 °F (-30 °C) ~131 °F (55 °C)
	OUTPUT	110-120 V ~	12 A	60 Hz	Type 3 Enclosure	

Instructions Pertaining to Risk of Fire, Electric Shock, or Injury to Persons

IMPORTANT SAFETY INSTRUCTIONS

⚠ WARNING

■ When using electrical products, basic precautions should always be followed.

Read all the instructions before using this product.

- This device should be supervised when used around children.
- This device is intended only for charging vehicles not requiring ventilation during charging.
- Risk of explosion. This device has arcing or sparking parts that should not be exposed to flammable vapors. This device should be located at least 18 inches(460 mm) above the floor.
- Do not put fingers into the charging connector.
- Do not use this product if the case or the EV connector (Charging connector) are broken, cracked, open, or show any other indication of damage.
- Please use this product only in ambient temperatures between -22 °F (-30 °C) and 131 °F (55 °C).
- To reduce the risk of electric shock, connect the plug to a Ground-Fault Circuit-Interrupter (GFCI) outlet or circuit containing an Earth Leakage Circuit Breaker.

- Do not attempt to remove the cover, open the case, or exchange the plug. In the event of any problem, contact the dealer for servicing.

- ⚡ ● Risk of Electrical Shock

- ⚠ ● If plug, charging connector or CCID(Charging Circuit Interrupting Device) is abnormally hot during use,unplug it immediately.

⚠ CAUTION

- To reduce the risk of fire, connect only to a circuit provided with 20 amperes maximum branch circuit overcurrent protection in accordance with the National Electrical Code, ANSI/NFPA 70.
- Do not use this product if the Plug cord or charging cable are frayed, have broken insulation, or any other signs of damage.

SAVE THESE INSTRUCTIONS

GROUNDING INSTRUCTIONS

This product must be grounded. If it should malfunction or breakdown, grounding provides a path of least resistance for electric current to reduce the risk of electric shock. This product is equipped with a cord having an equipment grounding conductor and a grounding plug. The plug must be plugged into an appropriate outlet that is properly installed and grounded in accordance with all local codes and ordinances.

⚠ WARNING

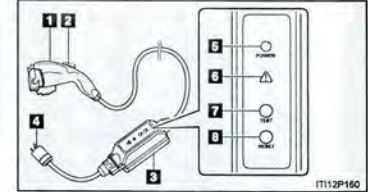
■ Improper connection of the equipment-grounding conductor may cause the risk of electric shock. Check with a qualified electrician or serviceman if you are in doubt as to whether the product is properly grounded. Do not modify the plug provided with the product - if it will not fit the outlet, have a proper outlet installed by a qualified electrician.

OPERATING INSTRUCTIONS

Please consult the owner's manual for detailed instructions.

■ The names of each part of the charging cable

- | | |
|--|---------------------------|
| 1 Charging connector | 5 Power indicator |
| 2 Latch release button | 6 Error warning indicator |
| 3 CCID(Charging Circuit Interrupting Device) | 7 Test button |
| 4 Plug | 8 Reset button |



■ Safety functions

The CCID (Charging Circuit Interrupting Device) has the following safety features.

Electrical leakage detection function

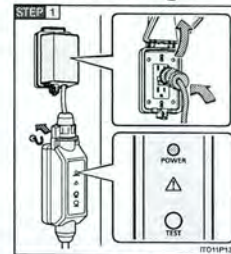
If an electrical leakage is detected during charging, the power source will be automatically interrupted, thus preventing fires or electrical shocks caused by electrical leakage. If the power source is interrupted, the error warning indicator will illuminate.

Electrical leakage test function

The electrical leakage detection function can be tested prior to charging to confirm that it is operating correctly.

When the test button is pressed while the plug is connected to an external power source, the error warning indicator light should illuminate.

■ How to charge

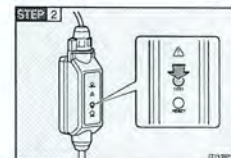


Insert the charging cable into the outlet of the external power source.

The power indicator on the CCID (Charging Circuit Interrupting Device) will illuminate.

If the power indicator does not illuminate, ensure that the plug is firmly connected to the outlet.

Hang the CCID above the ground while charging, such as on a wall hook. The CCID can be hung by using the hole in the back. Do not attach the CCID to the wall with screws.

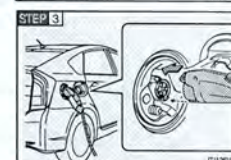


Press the test button on the CCID (Charging Circuit Interrupting Device) to check that the electrical leakage detection function operates properly.

If the error warning indicator illuminates when the test button is pressed, the function is operating correctly.

After the test has been completed, press the reset button to extinguish the error warning indicator. Charging cannot be carried out while the error warning indicator is illuminated.

If the error warning indicator does not come on even if the test button is pressed, it is likely that the function is not operating correctly. Stop charging immediately and contact your TOYOTA dealer.



Open the charging port lid and remove the charging connector cap. Insert the charging connector into the charging inlet.

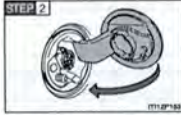
OPERATING INSTRUCTIONS

continuance

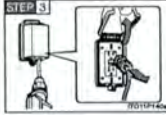
After charging



Pull the charging connector towards you while pressing the latch release button.



Close the charging port lid and attach the charging connector cap.



Remove the plug from the outlet. Hold the body of the plug when removing.

When using outdoors or on an outside wall, use an outlet with a weatherproof cover. Do not use outdoors in inclement weather.

WARNING

Observe the following precautions. If you do not follow them, fire, electrical shock or damage may occur, possibly resulting in death or serious injury.

When using the charging cable and CCID(Charging Circuit Interrupting Device)

- Do not attempt to disassemble or repair the charging cable, charging connector, plug or CCID(Charging Circuit Interrupting Device). If a problem arises with the charging cable or the CCID(Charging Circuit Interrupting Device), stop use immediately and contact your TOYOTA dealer.
- Do not connect the device into an outlet that is loose, worn, or broken. Ensure the plug fits tight in outlet.
- Do not subject the CCID(Charging Circuit Interrupting Device) to strong impacts.
- Do not forcefully fold the charging cable around or scratch it with sharp things.
- Do not fold the charging connector or plug around or insert foreign objects into them.
- Hold the body of the charging connector or plug when removing.

Power sources

- Connect to an AC 120V outlet (NEMA 5-15R/5-20R) with a Ground-Fault Circuit-Interrupter (GFCI) and with an over current circuit breaker in a panel board.



- Do not connect the charging cable to a multi-outlet, adapter, or power strip.



- Do not use an adapter, power strip, or extension cord between the outlet and device. The cable may overheat, or the leak detection function may not operate correctly.

When charging

- Connect to a power source suitable for charging.
- Do not connect charging cable if either hands, cable, or outlets are wet.
- Do not touch the electrical terminals of the charging connector or short it with foreign objects.
- If the plug is dirty or dusty, clean it with a damp cloth before connecting.
- When the plug is used with a weatherproof outlet for outdoor use, protect the plug and outlet from rain and snow by using a weatherproof cover in accordance with the National Electric Code (NEC) and ANSI/NFPA 70. Ensure the weatherproof cover closes completely. If the weatherproof cover cannot be closed, install a weatherproof cover that will close.
- To reduce the risk of electric shock, connect only to NEMA 5-15R or NEMA 5-20R outlets that are properly grounded.
- Insert the plug firmly into the outlet.
- Do not charge if the charging cable is coiled or bundled.
- After connecting the charging cable, confirm that it is not folded around.
- Do not drop and do not impact.
- Do not place heavy objects on the charging cable.
- If the power indicator does not light after plugging into the outlet, unplug it immediately.

USER MAINTENANCE, MOVING AND STORAGE INSTRUCTIONS

WARNING

- Wipe water, snow, ice, other liquids, or dirt off the plug, charging connector, or CCID (Charging Circuit Interrupting Device) with a dry cloth.
- Remove the charging cable from the outlet as soon as possible and store it in a dry, clean place.
- Do not remove cover or attempt to open the case. Refer servicing to the dealer if it has any trouble such as CCID(Charging Circuit Interrupting Device) malfunction, or any cracking, breakage or deformation of case or plug.
- Do not leave the charging cable in areas where the outside temperature is lower than -40°F (-40°C). The charging cable will likely be damaged.
- Do not store the device outdoors or in a wet place after use.

CAUTION

- Do not use the device if any blades of the plug are bent.
- Ensure the plug is fully inserted into the outlet. When unplugging from the outlet, grip and pull from the plug body. Never yank or twist cord to unplug.
- The cable and cord insulator may be broken if excessive force is used when the temperature is low.
- If the power indicator and error warning indicator lights function as shown in the table, contact your TOYOTA Dealer.

	Power Indicator Light	△ Error Warning Indicator Light	Notes
Charging cable error	flashing	on	Contact TOYOTA Dealer.
Nearing end of charging cable life	on	flashing	Charging cable nearing the end of life. Replace charging cable soon.
End of charging cable life	on	on	Replace charging cable.

NOTE: This equipment has been tested and found to comply with the limits for a Class B digital device, pursuant to part 15 of the FCC Rules. These limits are designed to provide reasonable protection against harmful interference in a residential installation. This equipment generates, uses and can radiate radio frequency energy and, if not installed and used in accordance with the instructions, may cause harmful interference to radio communications. However, there is no guarantee that interference will not occur in a particular installation. If this equipment does cause harmful interference to radio or television reception, which can be determined by turning the equipment off and on, the user is encouraged to try to correct the interference by one or more of the following measures:

- Reorient or relocate the receiving antenna.
- Increase the separation between the equipment and receiver.
- Connect the equipment into an outlet on a circuit different from that to which the receiver is connected.
- Consult the dealer or an experienced radio/TV technician for help.