

FLA COE  
FLB COE  
> FLD Conventional  
Business Class

FLC 112 Conventional  
Century Class Conventional  
Argosy COE  
Cargo

Columbia  
> Coronado  
Business Class M2  
Cascadia

Freightliner  
Service Bulletin

## General Information

Note: If this service bulletin is being performed in conjunction with Service Bulletin 83-134, the redesigned H03 line is the only section of this service bulletin that will need to be completed.

New H02 and H03 lines (in and out of condenser) have been developed, which provide an additional 7/8 to 1-1/8 inch (20 to 30 mm) of clearance to the inside of the hood. The new H02 line also has an added section of flexible hose to help isolate the condenser from engine vibration. If the H02 or H03 hoses have evidence of rubbing on the hood or the condenser has a fracture, the vehicle should be repaired using these updated parts. If a vehicle is being upgraded with the new lines, both H02 and H03 must be replaced as a pair. If subsequent line failures occur, the lines may be replaced individually.

## A/C Line Replacement

**IMPORTANT:** Warranty claims must be accompanied by digital photos of the damaged parts. Photograph the damaged hoses and the rub marks on the hood, before removing the parts from the vehicle.

Refer to [Fig.1](#) for new A/C line installation.

1. Shut down the engine and chock the tires.
2. Raise the hood.
3. Begin recovery of the refrigerant from the air conditioning system; for instructions, see **Group 83** of the vehicle workshop manual.

**IMPORTANT:** Under no circumstances should the ports on the compressor or the refrigerant lines remain uncapped for longer than five minutes. Water and dirt can damage the refrigerant system. Do not blow shop air through refrigerant lines since shop air is wet (humid).

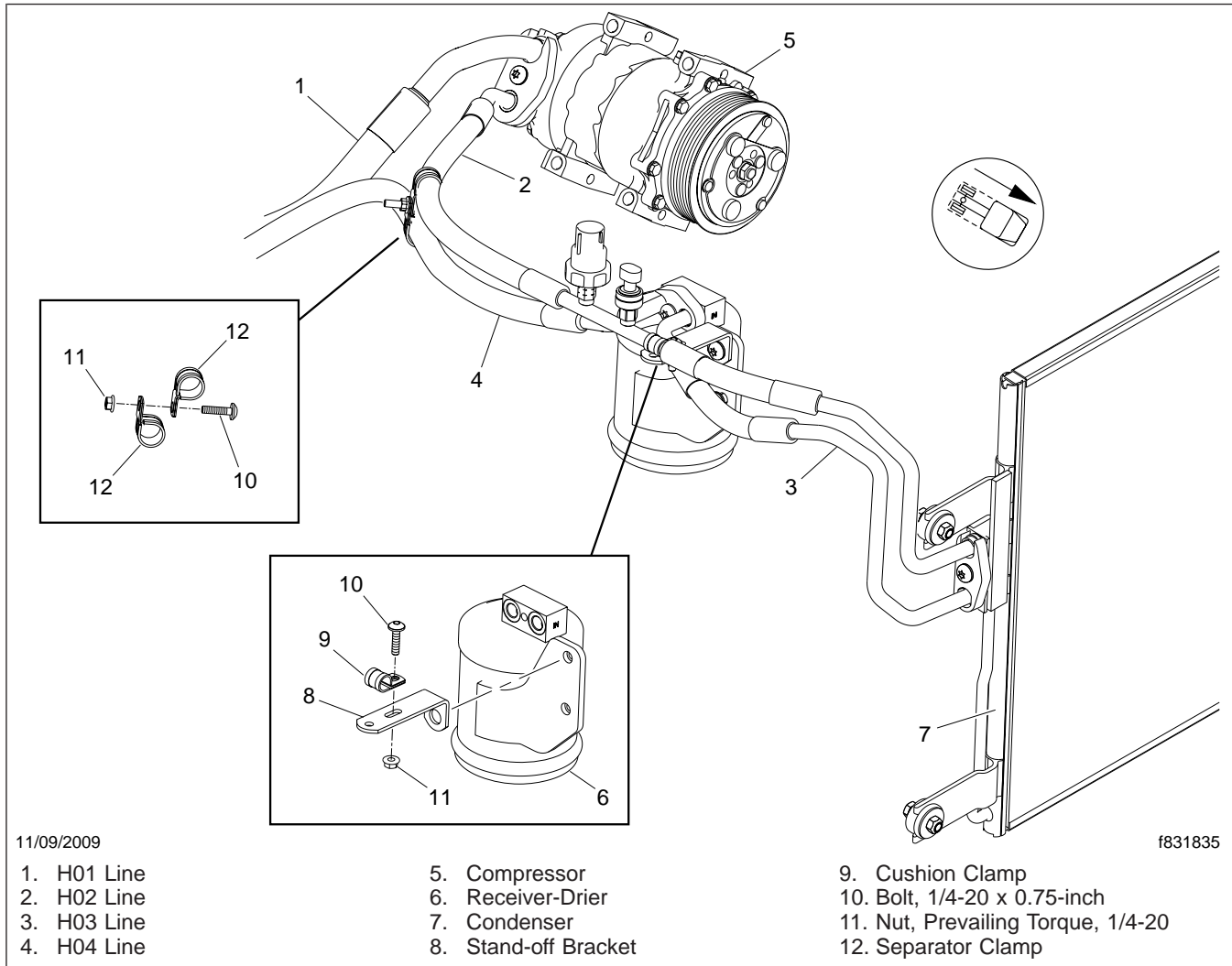
4. After the refrigerant has been fully recovered, disconnect the discharge (H02) and suction (H01) lines from the compressor. Cap the discharge and suction ports and the refrigerant lines.
5. Remove the fastener from the junction block assembly at the condenser. Move the H02 and H03 lines out of the way, and quickly cap the condenser ports.
6. Remove the fastener from the junction block assembly at the receiver-drier. Move the H03 and H04 lines out of the way, and quickly cap the receiver-drier ports and plug the lines/hoses as needed.
7. On the H02 line, remove the fastener from the mounting bracket on the side of the radiator, and if equipped, remove the separator clamp between the H02 and H04 lines.
8. Remove and discard the old H02 and H03 A/C lines.
9. Uncap the ports and the refrigerant lines. Check all the refrigerant lines and the ports. They must be clean and free of nicks, gasket residue, and other foreign material. Replace all of the seals. Do not lubricate the Mini Stat-O-Seals prior to installation. Use only a Mini Stat-O-Seal on a Mini Stat-O-Seal assembly.
10. Position the new H02 and H03 A/C lines, and using new seals, connect the lines at the compressor, at the condenser and the receiver-drier. Tighten the fasteners on the retaining plates 11 to 15 lbf·ft (15 to 20 N·m). See [Fig. 1](#).
11. Using a cushion clamp, L-shaped stand-off, and hardware listed in [Table 1](#), secure the H02 line to the radiator bracket as shown in [Fig.1](#).
12. If equipped, install the separator and clamps between the H02 and H04 lines.

## Freightliner Service Bulletin

FLA COE  
FLB COE  
> FLD Conventional  
Business Class

FLC 112 Conventional  
Century Class Conventional  
Argosy COE  
Cargo

Columbia  
> Coronado  
Business Class M2  
Cascadia



**Fig. 1, A/C Line Installation**

13. If the vehicle has an MBE4000 engine, a new routing bracket (A22-65691-000) may be required for properly securing the H02 line. The bracket attaches using the top two compressor mounting bolts. The line attaches to the bracket using an M8 X 25 mm screw (such as 23-12639-725). Also refer to **Service Bulletin 83-134**.
14. Add refrigerant oil to the system to replace that which is lost when the components were replaced, and when the system is recovered. For instructions, see **Group 83** of the vehicle workshop manual.
15. Evacuate and charge the air conditioning system with refrigerant; for instructions, see **Group 83** of the vehicle workshop manual.
16. Close the hood.

FLA COE  
FLB COE  
> FLD Conventional  
Business Class

FLC 112 Conventional  
Century Class Conventional  
Argosy COE  
Cargo

Columbia  
> Coronado  
Business Class M2  
Cascadia

**Freightliner  
Service Bulletin**

## Parts

Parts are available through the PDCs. See [Table 1](#) for part numbers and required parts.

New H02 and H03 Lines	
Description	Part Number
<b>Coronado with S60 (must replace all parts together; for vehicles built prior to 6/22/09)</b>	
H02 Line (with hose section added)	A22-66942-000
H03 Line (fits with new H02)	A22-66673-000
Bracket (to attach new H02 to cooling package)	23-09130-025
Cushion Clamp (to attach new HO2 to bracket)	UMP S630G8
M6 X 20 mm Bolt (for cushion clamp)	23-13384-020
M6 Prevailing-Torque Nut	23-13135-000
Installation diagram (page 5 shows how the new parts install)	D22-63771-001
<b>Coronado with C15 (must replace all parts together; for vehicles built prior to 6/22/09)</b>	
H02 Line with hose section added	A22-66941-000
H03 Line that fits with new H02 above	A22-66673-000
Receiver Drier (fits with new parts above, and prevents hood rub issues)	A22-65550-000
Bracket (to attach new H02 to cooling package)	23-09130-025
Cushion Clamp (to attach new HO2 to bracket)	UMP S630G8
M6 X 20 mm Bolt (for cushion clamp)	23-13384-020
M6 Prevailing-Torque Nut	23-13135-000
Installation Diagram (page 5 shows how the new parts install)	D22-63593-000
<b>FLD with S60 (must replace both parts together; for vehicles built prior to 8/17/09)</b>	
H02 Line (with hose section added)	A22-66306-000
H03 Line (that fits with new H02 above)	A22-66252-000
<b>FLD with MBE4000 (must replace all three parts together; for vehicles built prior to 8/17/09)</b>	
H02 Line (with hose section added)	A22-66248-000
H03 Line (that fits with new H02 above)	A22-66252-000
Routing Bracket	A22-65691-000
M8 X 25mm Screw	23-12639-725
<b>FLD with C15 (must replace both parts together; for vehicles built prior to 8/17/09)</b>	
H02 Line (with hose section added)	A22-66492-000
H03 Line (that fits with new H02 above)	A22-66252-000

**Table 1, New H02 and H03 Lines**

## Warranty

Normal warranty applies. If these components are still covered under warranty on the vehicle in question, this update will be an appropriate deviation from the normal warranty repair process.

If H02 or H03 line failure has occurred, or if there is evidence that either or both lines interfere with the hood, warranty will cover replacement of both lines and associated hardware. Digital photos of the damaged lines and the rub area on the hood must be included with this claim. See [Table 2](#) or [Table 3](#) for damage code and labor allowance information, and refer to this bulletin by number in the story of the claim.

### Freightliner Service Bulletin

FLA COE  
FLB COE  
> FLD Conventional  
Business Class

FLC 112 Conventional  
Century Class Conventional  
Argosy COE  
Cargo

Columbia  
> Coronado  
Business Class M2  
Cascadia

QuickClaim Damage Code and Labor Allowance			
Damage Code	SRT Code	Description	Time: Hours
700-001722130	702-5011A	Lines, Refrigerant, H02 & H03, R/R	1.7 for Coronado 1.5 for FLD
700-001722130	702-5011B	Lines, Refrigerant, H03, w/ SB83-134, R/R	0.2 (MBE FLD only)
—	939-6030A	Digital Photo, Admin	0.2

**Table 2, QuickClaim Damage Code and Labor Allowance**

OWL VMRS Codes and Labor Allowance				
Component Code	Cause Code	SRT Code	Description	Time: Hours
001-001-285	12	702-5011A	Lines, Refrigerant, H02 & H03, R/R	1.7 for Coronado 1.5 for FLD
001-001-285	12	702-5011B	Lines, Refrigerant, H03, w/ SB83-134, R/R	0.2 (MBE FLD only)
—	—	939-6030A	Digital Photo, Admin	0.2

**Table 3, OWL VMRS Codes and Labor Allowance**

## Digital Photo Submission

### QuickClaim Users

Submit digital photos via WSC. Go to [AccessFreightliner.com](http://AccessFreightliner.com) > Support > My Tickets And Submit An Inquiry > Claims > Claim Documentation > select drop down choice, "I need to submit Claim Documentation." Attach the photos to the ticket, and list the ticket number in the beginning of the claim comments.

### OWL Users

Attach digital photos directly to the claim on the Attachments tab.