

Emissions Recall

Subject: Fuel System Hose Replacement LDT

Date: 03-03-2009

Bulletin: R0032

Campaign #: A6280

Affected Models: 2008-2009 NA6J (145), NB6J (165), NC6J (185)

Important: Verify on the Hino DCS Warranty System that the vehicle still needs to have this work performed.

Description:

This bulletin includes the instructions for the replacement of the fuel system hoses.

Condition:

Abnormal noise and vibration within the engine occurs due to the impeded operation of the injector needle which is caused by the formation of deposits in the fuel. The deposit formation occurs when metallic compounds, which are a part of the synthetic rubber hose material, are extracted from the synthetic rubber by naturally occurring solvents in the fuel. These metallic compounds are combined with abnormally high fuel temperature. The abnormally high fuel temperature is created due to air, which effuses from the fuel filter and is compressed in the supply pump to form the deposit. This deposit accumulates on the fuel injector needle and impedes the needle movement which causes abnormal post injection timing to occur. The abnormal post injection timing causes the abnormal noise and vibration of the engine.

Subject Vehicles:

Certain 2008 and 2009 model year NA6J (145), NB6J (165), and NC6J (185) Hino conventional trucks assembled at the Long Beach, CA. and Williamstown, WV assembly plants.

Before You Begin:

Read and understand all instructions and procedures before you begin. Read and observe all Caution and Warning safety alerts that precede these instructions while following these procedures. The alerts help to avoid damage to components, serious personal injury, or both.



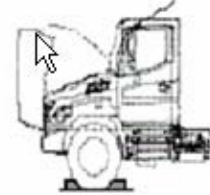
Once Recall is completed

Fill out the Recall Completion sticker as shown in the picture to the left. This sticker should be attached to the left door jam above the V.I.N. decal.

Emissions Recall

!!! WARNING !!!

- Park the vehicle on a flat and level surface.*
- Apply the parking brake.*
- Shift transmission to NEUTRAL.*
- Block the wheels to prevent the vehicle from moving.*
- Use care when working around surfaces which may be hot.*
- Wear safety glasses to prevent eye injuries.*
- Use a suitable container for diesel fuel when draining the filter assembly.*
- Dispose of diesel fuel in a manner that is pursuant to local regulations.*
- When opening and closing the hood, make sure no one is around the hood to prevent opening or closing the hood onto them.*



Required Parts:

Kit Part Number	Description	Quantity	Note	
S040010576	Fuel Hose Kit, LDT	1	35 gallon tank	
	Kit Contents	Qty. Per Kit	Ref. #	Note
	Hose (engine to left side-rail pipe)	1	①	SZ95061924
	Hose (engine to left side-rail pipe)	1	②	SZ95061925
	Hose (left side-rail pipe to filter assembly outlet)	1	③	SZ95061926
	Hose (left side-rail pipe to fuel tank)	1	④	SZ95061929
	Hose (filter assembly to tank)	1	⑤	SZ95061931
	Clip, Hose	10	⑥	SZ46612006
	Clamp	6	⑦	SZ46915002

Campaign = A6280 LDT

Initial stock of campaign parts will be shipped to each dealer. The campaign number will be used as the purchase order: A6280 LDT.

Fuel Hose Removal:

1. Turn the front wheels completely to the left.



Emissions Recall

2. Drain the fuel from the filter assembly into a suitable container.

Close the drain valve once the filter assembly is empty.



3. Disconnect the inlet and outlet hoses from the filter assembly.

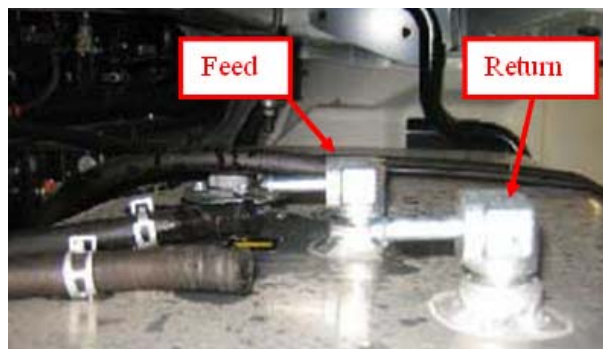
Allow hoses to drain into a suitable container.



4. Remove and discard the clamp located on the top of the left side-rail.



5. Disconnect the feed and return hoses from the fuel tank.



Emissions Recall

6. Remove and discard the clamp securing the fuel hoses to the top of the right side-rail.

Remove and discard both hoses.



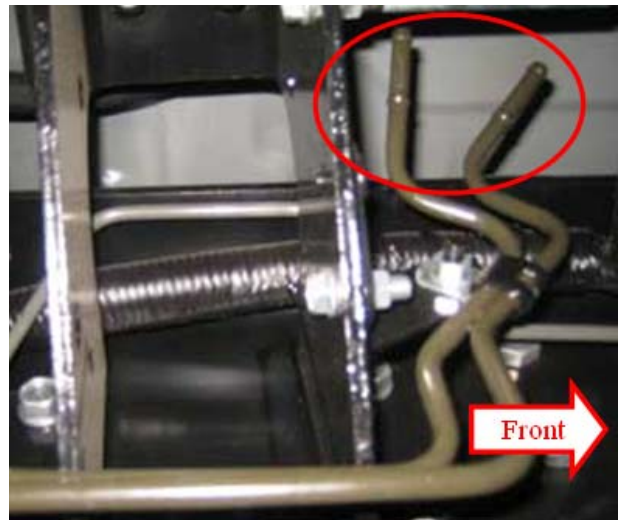
7. Disconnect the feed and return hoses from the pipes located at the rear of the engine.

NOTE: Access these hoses from the engine bay.



8. Disconnect the feed and return hoses from the front of the steel pipes located on the left side-rail.

Discard the hoses.



9. Disconnect the feed and return hoses at the rear of the steel fuel pipes located on the left side-rail.



Emissions Recall

- Remove the clamp that secures the fuel hoses to the front left side of the #3 crossmember.

NOTE: The #3 crossmember is located under the rear of the cab.



- Remove and discard the three clamps securing the fuel hoses to the #3 crossmember brackets.

Discard hoses.



Fuel Hose Installation:

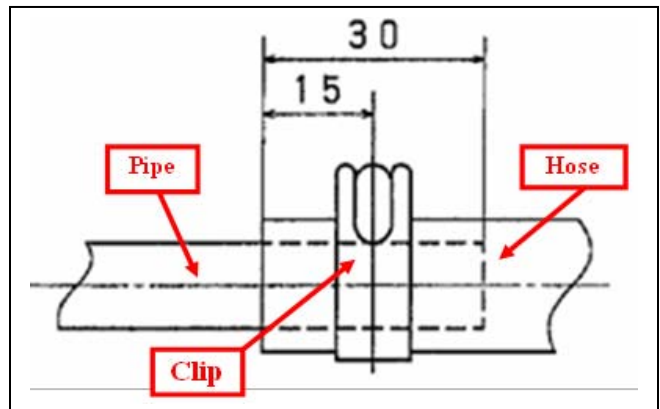
Note: Do not reuse any hoses, clips, or clamps.

The hoses have brightly colored paint stripes and paint dots that indicate the hose's function.

- Blue dot = Hose installation starting point
- Pink dot = Feed hose
- White dot = Return hose

- Pink stripe = Feed hose clamp location
- White stripe = Return hose clamp location.

Note: Once connected, the end of the hose must be 30 mm past the end of the pipe. The clip must be 15 mm from the end of the hose.



Emissions Recall

12. Connect the blue dot end of the return hose ① with a clip onto the engine return pipe.

NOTE: The blue dot end of this hose must be installed to the engine return pipe to ensure proper hose clamp location. The correct location of all clamps will be confirmed at the end of this procedure.

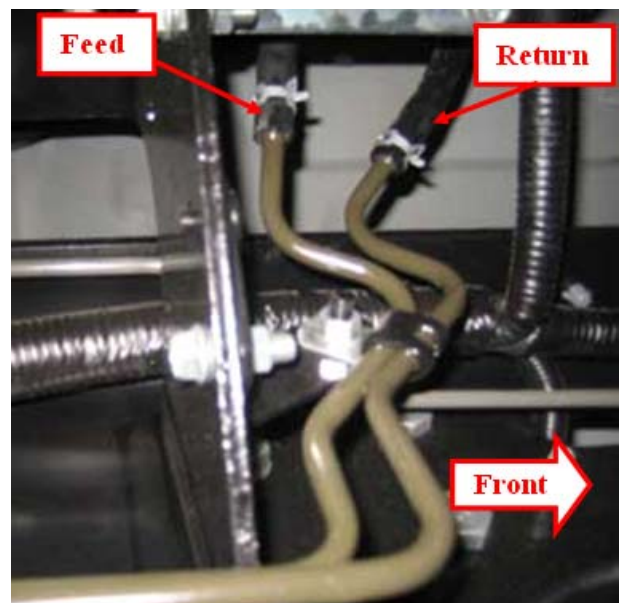


13. Connect the blue dot end of the feed hose ② with a hose clip onto the engine feed pipe.

NOTE: The blue dot end of this hose must be installed to the engine feed pipe to ensure proper hose clamp location. The correct location of all clamps will be confirmed at the end of this procedure.

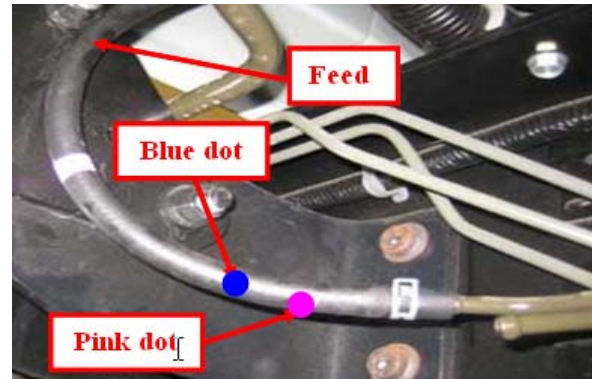


14. Connect the other end of the return hose ① and feed hose ② with a clip onto the return and feed pipes located on the left side-rail.

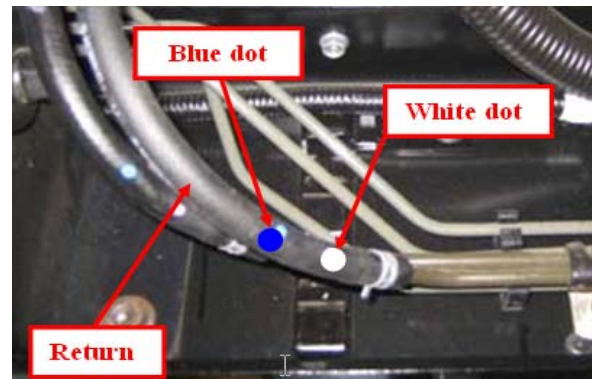


Emissions Recall

15. Connect the blue dot end of the feed hose ③ with a clip onto the feed pipe located on the left side-rail.



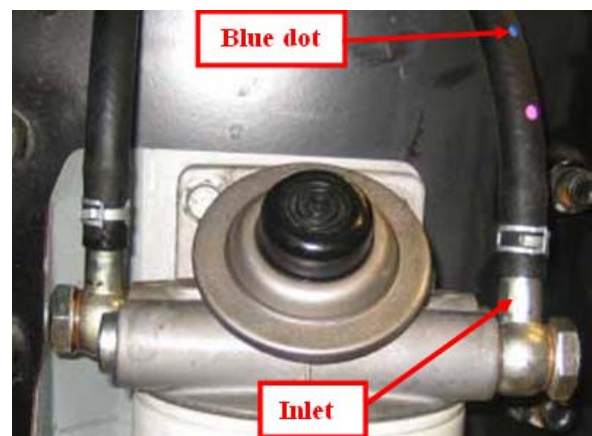
16. Connect the blue dot end of the return hose ④ with a clip onto the return pipe located on the left side-rail.



17. Connect the other end of the feed hose ③ with a clip to the outlet of the filter assembly.



18. Connect the blue dot end of the feed hose ⑤ with a clip onto the inlet of the filter assembly.

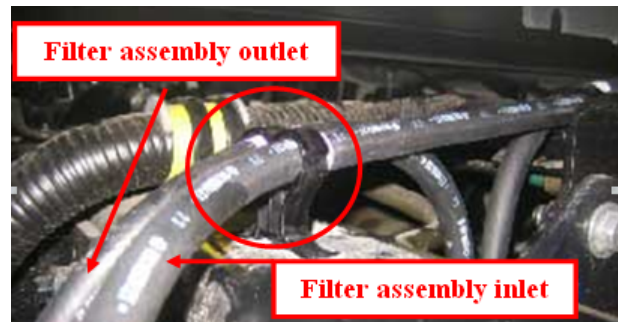


NOTE: The blue dot end of this hose must be installed to the inlet of the filter assembly to ensure proper hose clamp location. The correct location of all clamps will be confirmed at the end of this procedure.

Emissions Recall

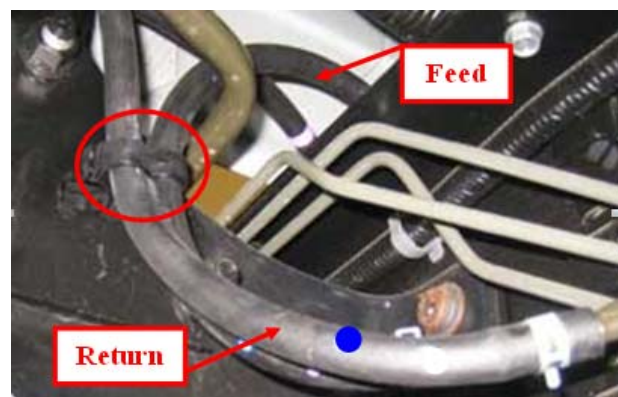
19. Secure the feed hoses to the left side-rail using a clamp ⑦. The pink stripes must be inside the clamp.

NOTE: Position the hoses as shown in picture.



20. Secure the feed and return hoses to the front of the #3 crossmember using a clamp ⑦. The pink (feed) stripe and white (return) stripe must be inside the clamp.

NOTE: Position the hoses as shown in picture.

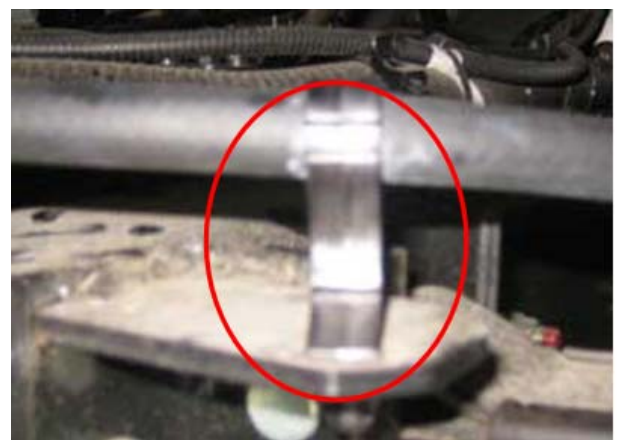


21. Secure the feed and return hoses to the top of the #3 crossmember using three clamps ⑦.

NOTE: Position the hoses as shown in picture.

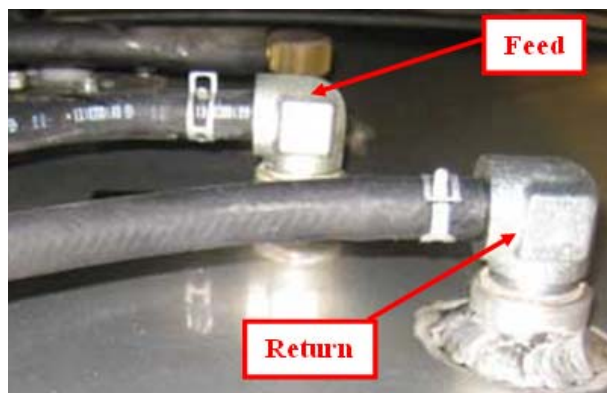


22. Secure the feed and return hoses to the right side-rail using a clamp ⑦. The pink (feed) stripe and white (return) stripe must be inside the clamp.



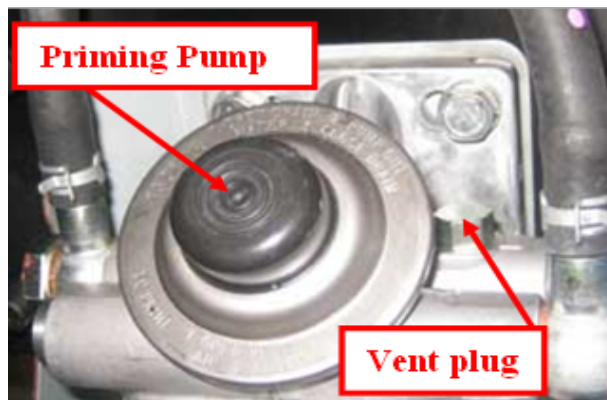
Emissions Recall

23. Connect the other end of the return hose ④ and the feed hose ⑤ to the return and feed fittings located on the top of the fuel tank.



24. Bleed the air from the filter assembly.

- A) Loosen the vent plug.
- B) Depress the priming pump until fuel exits the vent plug. Clean up any spilled fuel immediately.
- C) Close the vent plug.

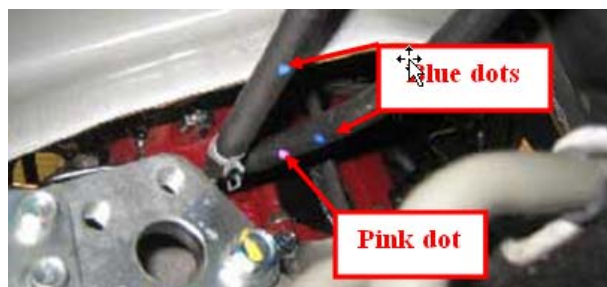


25. Start and idle the engine for three minutes (restart the engine if it stalls).

26. Check all previously open fuel system connections for leaks.

Confirmation:

27. Inspect the feed ① and return ⑤ connections at the rear of the engine for correct installation.



- A) Pink dot end of feed hose is connected to the engine feed pipe.

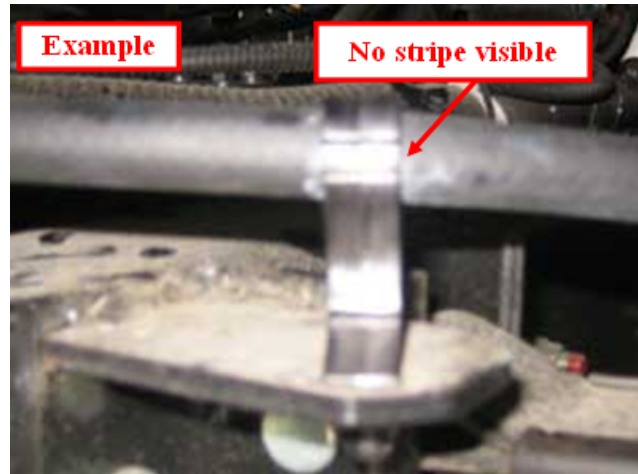
28. Inspect the feed hose ③ at the inlet of the filter assembly for correct installation.



- A) The pink dot end must connect to the inlet of the filter assembly.

Emissions Recall

29. Once secured, confirm the pink or white stripes are completely covered by the clamps.



Warranty Application Information:

Campaign Number: A6280 LDT
Time Allowance: 0.7 Hours
Warranty Code: 12222/ TCode 98
Operation Code: 12250AOT
Original Part Number: SZ95061921