

CHASSIS TECH TIPS

Subject: CORRECT BRAKE CALIPERS

1. RELEVANT MODELS:

2005 – 2007 NA, NB, NC, ND and NE Models

2. COMPLAINT:

Chassis experienced premature brake failure after a brake job was performed which included brake caliper replacement.

3. CAUSE:

Incorrect calipers were installed.

Possible causes

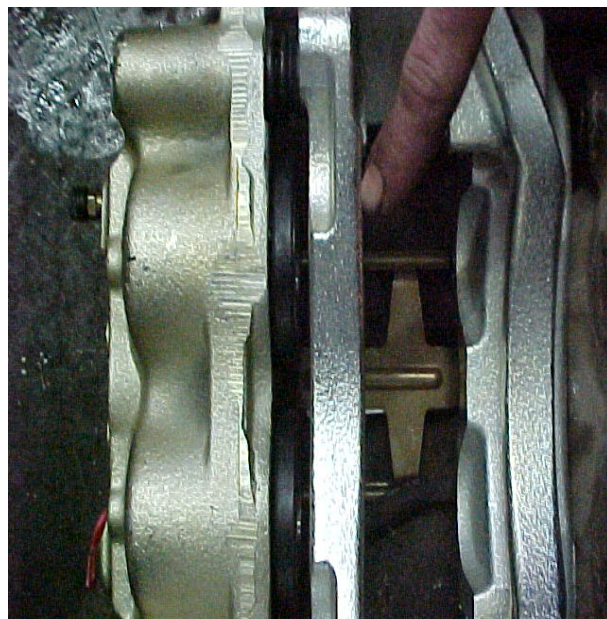
- a. Parts were ordered incorrectly.
- b. Parts were miss packaged.

4. CORRECTION:

Visually inspect old and new parts to verify they are the same. Regardless if part numbers are the same and correct.

CHASSIS TECH TIPS

Both of these calipers were ordered by the same part number which was correct for the chassis. The bracket in the left caliper is thicker than the bracket in the right caliper



It is very important to compare old and new parts.

The following page is a Parts Technical Bulletin that is posted on HinoNet in regards to proper application.

THIS BULLETIN IS NO LONGER VALID THE EPC HAS BEEN CORRECTED

HINO Parts Technical Bulletin

Release Date: 10-31-2006

Bulletin #002-06

Affected Models: NA/145 AND NB/165 Affected Years: 2005 thru 2007

Subject: ProQuest EPC Error – Incorrect Rear Caliper Part Numbers

The ProQuest Catalog / EPC contains an error with the part numbers for the rear axle calipers

for the models shown above.

The correct part number for the right rear caliper for the NA/145 is LRG716

The correct part number for the left rear caliper for the NA/145 is LRG717

The correct part number for the right rear caliper for the NB/165 is LRG714

The correct part number for the left rear caliper for the NB/165 is LRG715

The new Quick Reference Guide shows the correct part numbers and it is expected that the June 2006 EPC release will have this error corrected.

It is very important that you download each new quarterly release of the EPC to have the most current VIN's and corrected information.

As a temporary solution you can use the Add a Note function in the EPC and enter the correct part numbers. Should you need help in using this or any other EPC function please do not hesitate to call one of the HINO Parts Customer Service Representatives at (662) 342-3939 They are available from 7am to 7pm Central Standard Time Monday thru Friday.

Sincerely,

Brian Buchanan

Brian Buchanan

Parts Technical Manager

Buchanan@hino.com

(O) (662) 342-3939 X130

(F) (662) 342-5151