

SERVICE INFORMATION BULLETIN

Subject: EXHAUST BRAKE ACTIVATION INSTRUCTIONS

This document is to inform dealers and workshops on procedures to activate exhaust brake operation.

1. RELEVANT MODELS

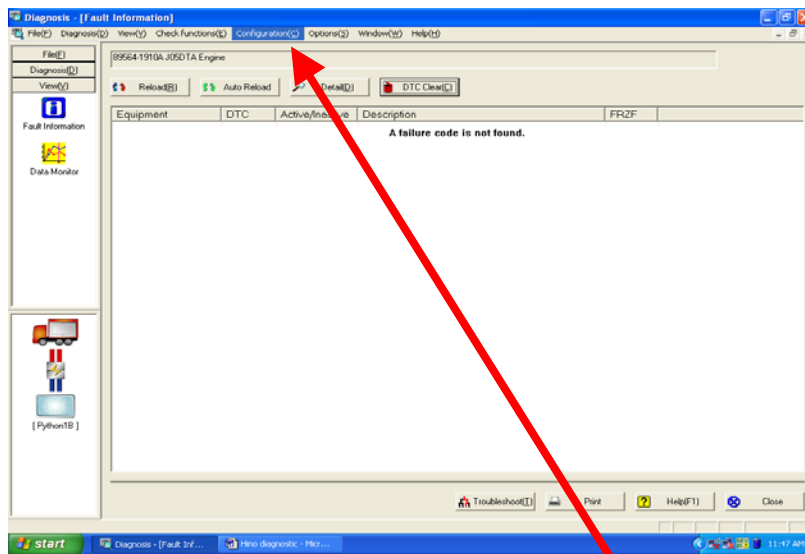
All 2005 and newer conventional model vehicles

2. CONTENTS

Upon the installation of all exhaust brake components the following procedures are to be performed in order to activate the exhaust brake feature.

SERVICE INFORMATION BULLETIN

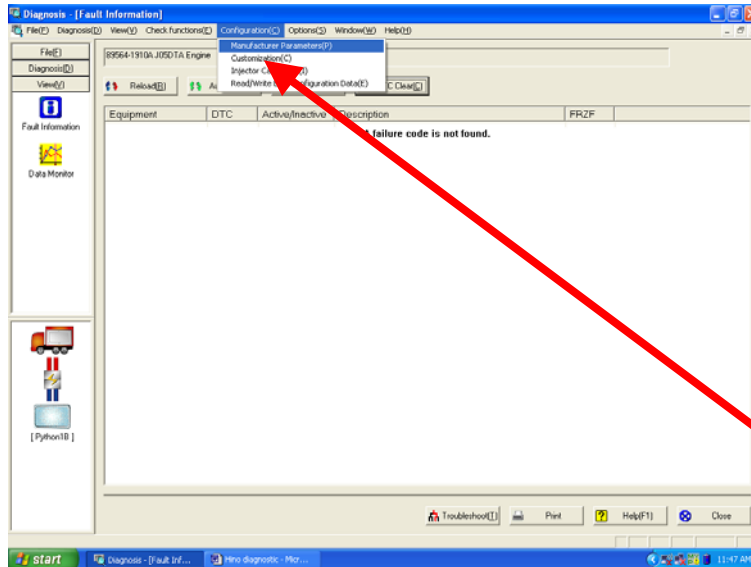
- 1-1) Connect the Python to the vehicle
- 1-2) Open Diagnostic Explorer to the main screen.
- 1-3) Confirm the ignition is turned to the “ON” position.
- 1-4) Selecting Diagnostic DTC's:
 - A) Select **All DTCs** icon
- 1-5) Select: **Engine** tab
- 1-6) Select: **System Fix**
In the next this screen fill out the information needed or just select OK:
 - a) Vehicle identification number
 - b) Complaint
 - c) Codes
 - d) Any other conditions with the vehicle
 - e) Customer name
 - f) Mileage.
- 1-7) Select: **OK**
- 2-1) **Select Configuration**



Select

SERVICE INFORMATION BULLETIN

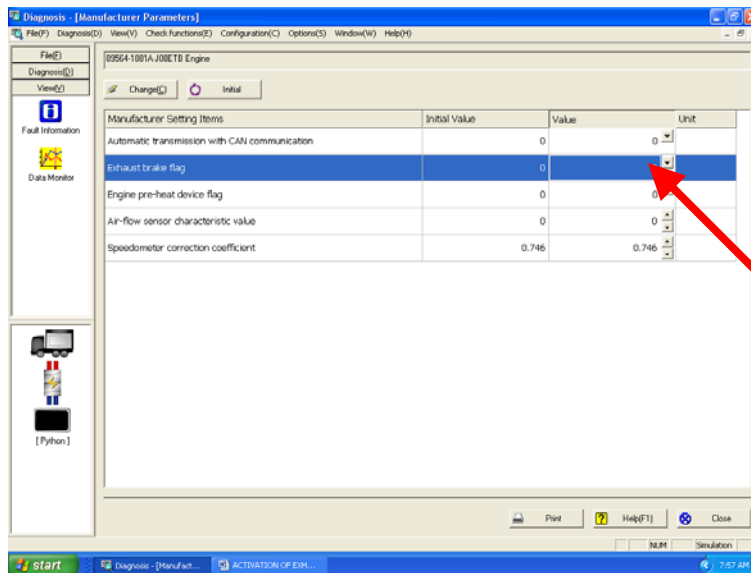
2-2) Select: MANUFACTURES PARAMETERS



Select

- 2-3) In this screen you have the capability of activating the exhaust brake.
- 2-4) This operation can be performed by selecting the drop down arrow on the right side of the value column and changing the number from 0 to 1

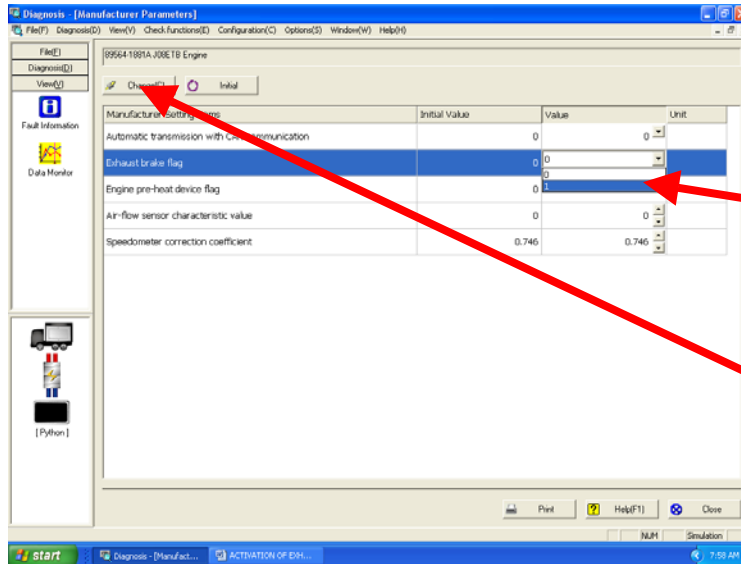
**NOTE: 0 = NO
 1 = YES**



Select

2-5) Select 1 to activate exhaust brake

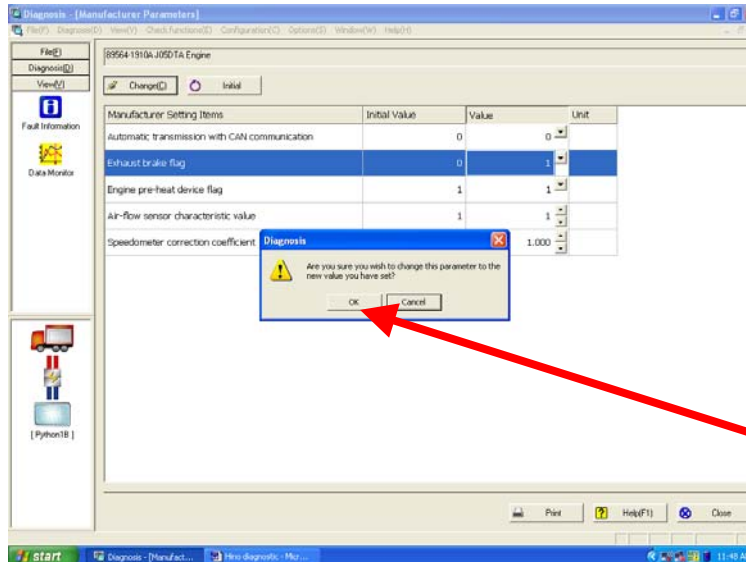
SERVICE INFORMATION BULLETIN



Select

Select

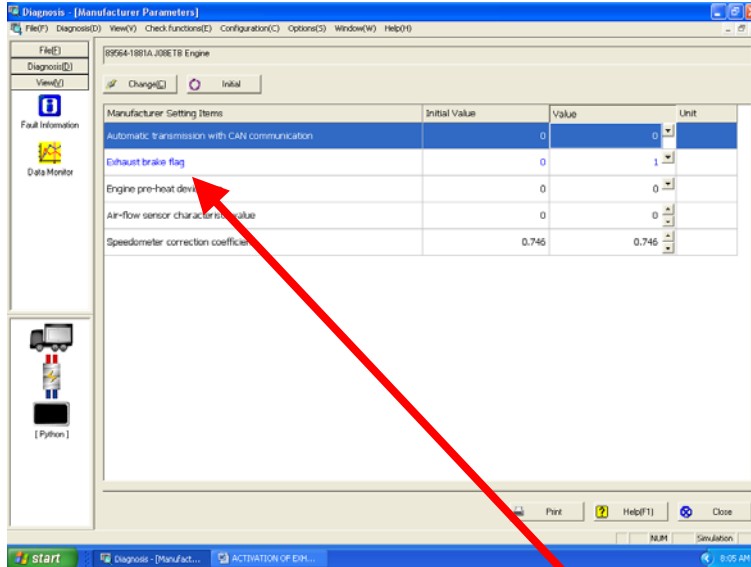
- 2-6) Select **CHANGE** to reconfigure to requested command of **0** or **1**
- 2-7) A window will pop up "Are you sure you wish to change the parameter To the new value you have set?" Select "**OK**"



Select

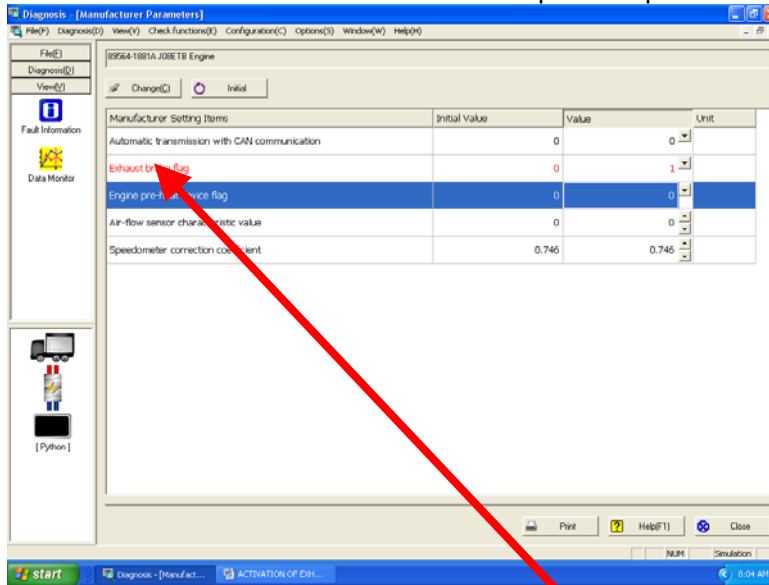
- 3-2) Exhaust brake flag should change to **BLUE** after selecting change.

SERVICE INFORMATION BULLETIN



Blue identifies command was accepted in ECU

3-3) If Exhaust Brake is **RED** the ECU did not accept the request.



Red identifies command was not accepted in ECU

- 3-4) If indicated **red** perform the operation again. Highlight Exhaust brake flag And Select Change.
- 3-5) Select **CLOSE** to return to Main Menu. Procedure completed.