



## OCCC and Tire Loading Information Labels

<b>Bulletin Type:</b>	Recall	<b>Publication Date:</b>	April 2026
<b>Bulletin #(s):</b>	26V-233	<b>Make(s):</b>	Entegra Coach
<b>Job Code(s):</b>	9903653	<b>Model(s):</b>	Ethos
<b>Flat Rate(s):</b>	9903653 - 0.3 Hr. Labor - Replace OCCC Label and Tire and Loading Information Label	<b>Model Year(s):</b>	2025 - 2026

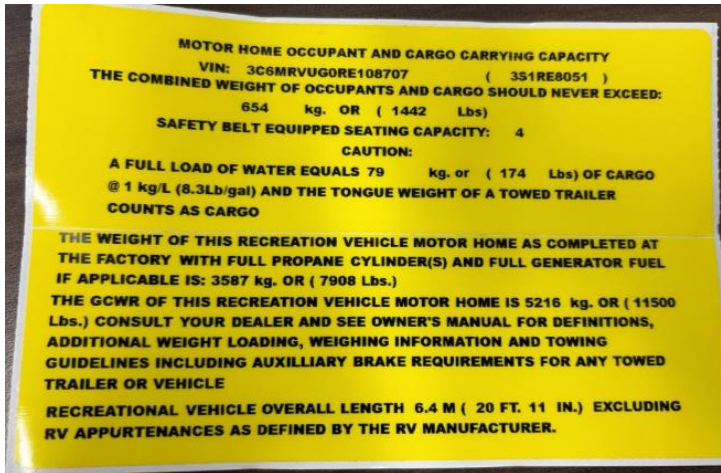
<b>Incident:</b>	Incorrect number of seat belt equipped seating positions listed on the Occupant and Cargo Carrying Capacity (OCCC) labels and the Tire and loading information labels.
<b>Affected Units:</b>	2025 -2026 Entegra Coach Ethos
<b>Part:</b>	Part: OCCC Label/Tire and Loading Information enclosed in owner/dealer notification letter
<b>Misc. Tools &amp; Supplies:</b>	Isopropyl alcohol Shop rag
<b>Parts Return Information:</b>	N/A

## REPLACE OCC AND TIRE AND LOADING INFORMATION LABELS

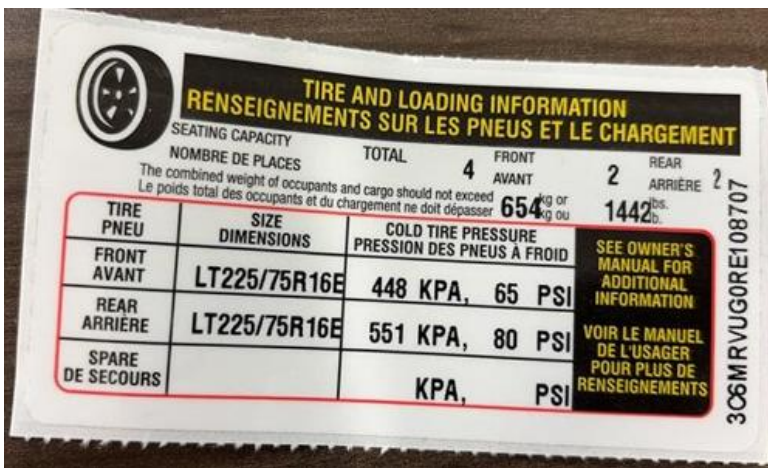
### Remove existing labels

1. There are two locations for the Occupant and Cargo Carrying Capacity Labels. One label will be affixed on the Driver side door B' pillar and the other label will be affixed inside of the passenger door. The Tire and Loading Information label will be affixed on the Driver side door B' pillar
2. Remove the existing label. Using isopropyl alcohol and a shop rag, remove any adhesive residue from the surface where the original label was removed.
  - a. Allow the area to dry for at least 30 seconds.

The Occupant and Cargo Carrying Capacity and Tire and Loading Information labels below are only an example of the labels you are to replace.



Occupant and Cargo Carrying Capacity Label



Tire and Loading Information label

**Apply new labels**

1. Remove the protective back from the new label. Align the new label in the same location of the original label and apply it to the surface. Remove any air bubbles from the label.
  - a. Note: Do not attempt to remove or adjust the label once it has touched the surface. Doing so may damage the label or cause it not to adhere properly to the surface.

If a label is damaged or will not properly adhere to the surface, please request a new label at [compliance@jayco.com](mailto:compliance@jayco.com) and we will send a new label.

Jayco's sole obligation under our limited warranty is to repair or replace defective materials and/or workmanship deemed our responsibility as determined by Jayco in our sole discretion. Jayco reserves the right to use new and/or remanufactured parts or materials of similar quality to complete any work, and to make parts and/or design changes as appropriate without notice to anyone. Jayco designs and/or materials changes are done without obligation to incorporate such changes in previously manufactured product. Jayco makes every reasonable effort to ensure field remedies will not adversely affect performance and/or safety of the unit. This field remedy is not intended to extend to future performance of this RV, or any of its materials, components or parts beyond the standard warranty period. The RV owner's obligation to notify Jayco, or one of its independent, authorized dealers, of a claimed defect does not modify any obligation placed on the RV owner to contact Jayco directly when attempting to pursue remedies under state or federal law.

903 South Main Street • P.O. Box 460 • Middlebury, IN 46540