



VOLUNTARY RECALL CAMPAIGN

Classification: RS26-002	Reference: NTB26-028	Date: May 4, 2026
-----------------------------	-------------------------	----------------------

VOLUNTARY SAFETY RECALL CAMPAIGN 2009-2010 CUBE; TAKATA DRIVER AIR BAG MODULE

CAMPAIGN ID #: R26A1
APPLIED VEHICLES: 2009-2010 cube (Z12)

**Check Service COMM or Dealer Business Systems (DBS)
National Service History to confirm campaign eligibility.**

INTRODUCTION

Nissan is conducting this voluntary safety recall campaign on certain 2009-2010 cube vehicles to inspect and replace the driver air bag module, if necessary. This service will be performed at no charge to the customer for parts or labor.

IDENTIFICATION NUMBER

Nissan has assigned identification number R26A1 to this campaign. This number must appear on all communication and documentation of any nature dealing with this campaign.

DEALER RESPONSIBILITY

It is the dealer's responsibility to check Service COMM or Dealer Business Systems (DBS) National Service History for the campaign status on each vehicle falling within the range of this voluntary safety recall which for any reason enters the service department. This includes vehicles purchased from private parties or presented by transient (tourist) owners and vehicles in a dealer's inventory. **Federal law requires that new vehicles in dealer inventory which are the subject of a safety recall must be corrected prior to sale. Failure to do so can result in civil penalties by the National Highway Traffic Safety Administration.** While federal law applies only to new vehicles, Nissan strongly encourages dealers to correct any used vehicles in their inventory before they are retailed.

Bulletins are intended for use by qualified technicians, not 'do-it-yourselfers'. Qualified technicians are properly trained individuals who have the equipment, tools, safety instruction, and know-how to do a job properly and safely. **NOTE:** If you believe that a described condition may apply to a particular vehicle, DO NOT assume that it does. See your Nissan dealer to determine if this applies to your vehicle.

REPAIR OVERVIEW

REQUIRED SPECIAL TOOL(S)

Quick Scan Tool (J-52352 / NI-52352)

- Each dealer has one essential Quick Scan Tool (J-52352).
- Additional tools can be obtained from Tech•Mate at 1-800-662-2001.



Figure 1

SERVICE PROCEDURE

Remove the Driver Air Bag Module Assembly from the Vehicle

WARNING

To avoid the risk of death or severe personal injury, follow all cautions, warnings, and notes in the ESM when working on or near a Supplemental Restraint System (SRS), such as an air bag.

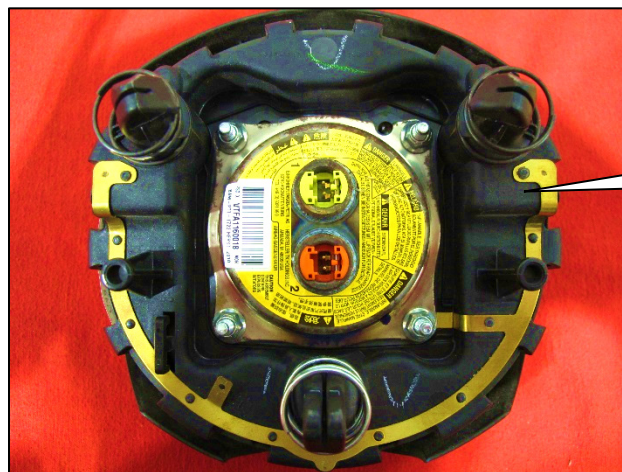
NOTICE

Handle interior trim carefully to avoid damage. Work with clean hands and clean tools to avoid dirt and stains. Use protective covers as needed.

1. Write down the radio settings.

Presets	1	2	3	4	5	6
AM						
FM 1						
FM 2						
SAT 1						
SAT 2						
Bass	Treble		Balance	Fade	Speed Sen. Vol.	

2. Turn the ignition OFF.
3. Disconnect both battery cables, negative cable first.
4. Wait at least 3 minutes.
5. Remove the Driver Air Bag Module assembly.
 - Refer to the ESM: **H: RESTRAINTS > SR – SRS Airbag > REMOVAL AND INSTALLATION > DRIVER AIR BAG MODULE > Removal and Installation**
6. Set the Driver Air Bag Module in a clean working area with the Nissan emblem facing down as shown in Figure 2.



Driver Air Bag Module

Figure 2

- Attach the Quick Scan Tool (J-52352) to a CONSULT PC's USB port (Figure 3).



Figure 3

- Open ASIST on the CONSULT PC.
- On the left side of the ASIST main menu, select **TECH SUPPORT INFO**, and then select **Bulletin Support Items**.

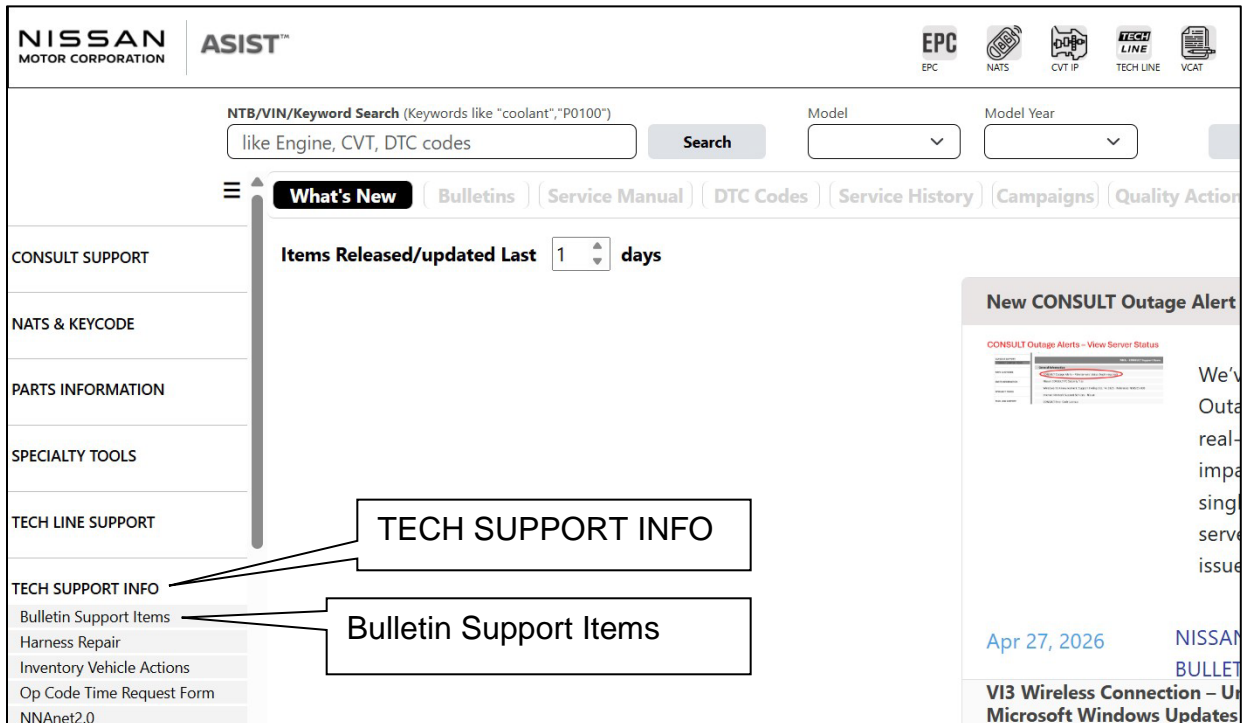


Figure 4

10. Select R26A1 Cube Driver Airbag.

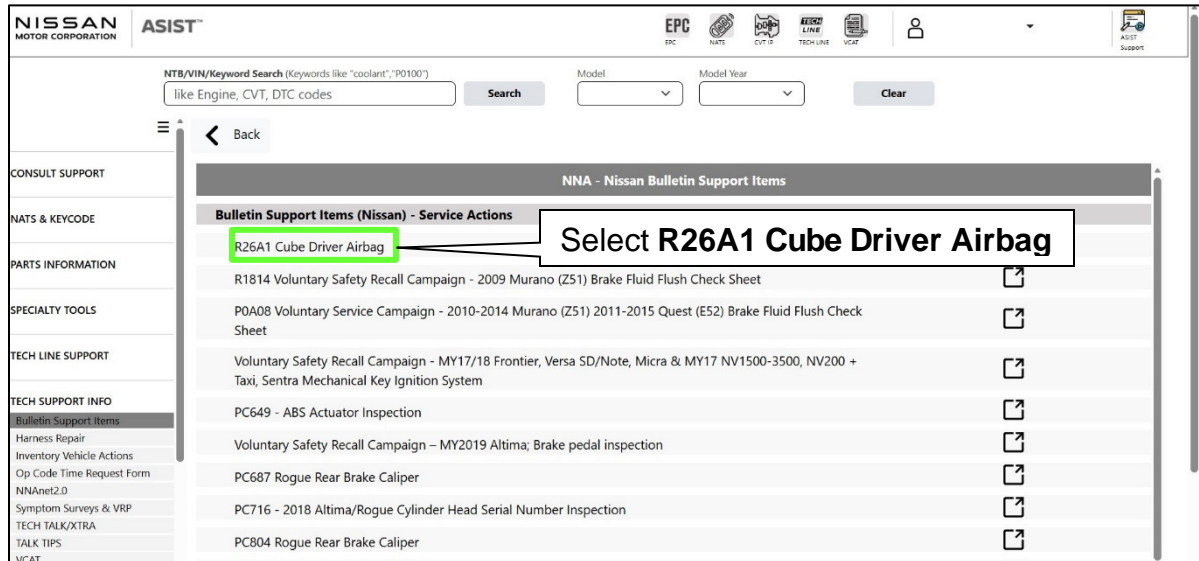


Figure 5

11. Locate the bar code Serial Number (11 digits) on the inflator of the Driver Air Bag Module, as shown in Figure 6 and Figure 7.

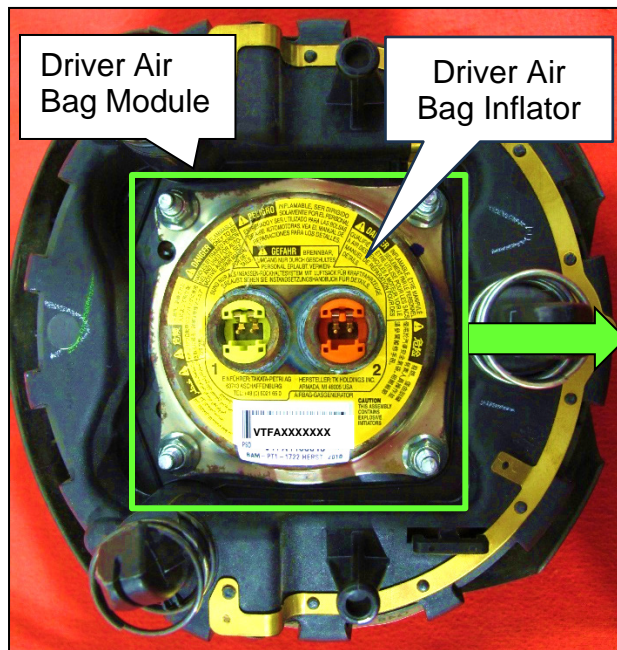


Figure 6

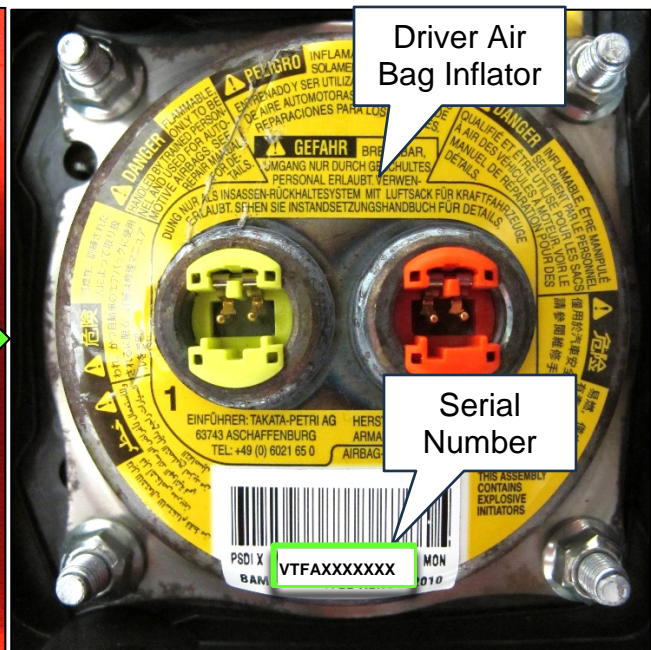


Figure 7

12. Type in the **Dealer Code**, **VIN** and the Driver Air Bag Module Inflator bar code Serial Number (11 digits).

HINT:

- The bar code Serial Number has 11 digits and starts with “**VTF**”
- If the bar code Serial Number label is missing/unreadable from the Driver Air Bag Module, enter “MISSING” into the **Serial Number** box in the ASIST tool.

13. Once the **Serial Number** field is populated, verify the serial number entered in the box matches the serial number on the Driver Air Bag Module, and then select **Submit**.

- If the result is **NG** (Figure 8), proceed to step 14 to replace the Driver Air Bag Module with the part listed in **PARTS INFORMATION** on the last page.
- If the result is **OK**, proceed to step 20 on page 10 to reinstall the Driver Air Bag Module.

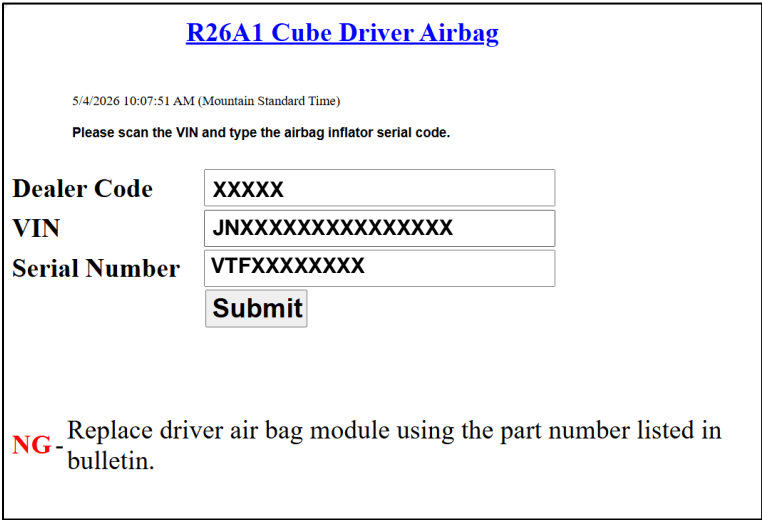


Figure 8

DRIVER AIR BAG MODULE REPLACEMENT PROCEDURE

WARNING

To avoid the risk of death or severe personal injury, follow all cautions, warnings, and notes in the ESM when working on or near a Supplemental Restraint System (SRS), such as an air bag.

NOTICE

Handle interior trim carefully to avoid damage. Work with clean hands and clean tools to avoid dirt and stains. Use protective covers as needed.

Register the New Driver Air Bag Module

14. Obtain new Driver Air Bag Module from your parts department.
- New Driver Air Bag Module is listed in the **PARTS INFORMATION**.

15. On the left side of the ASIST main menu, select **TECH SUPPORT INFO**, then **Inventory Vehicle Actions**.

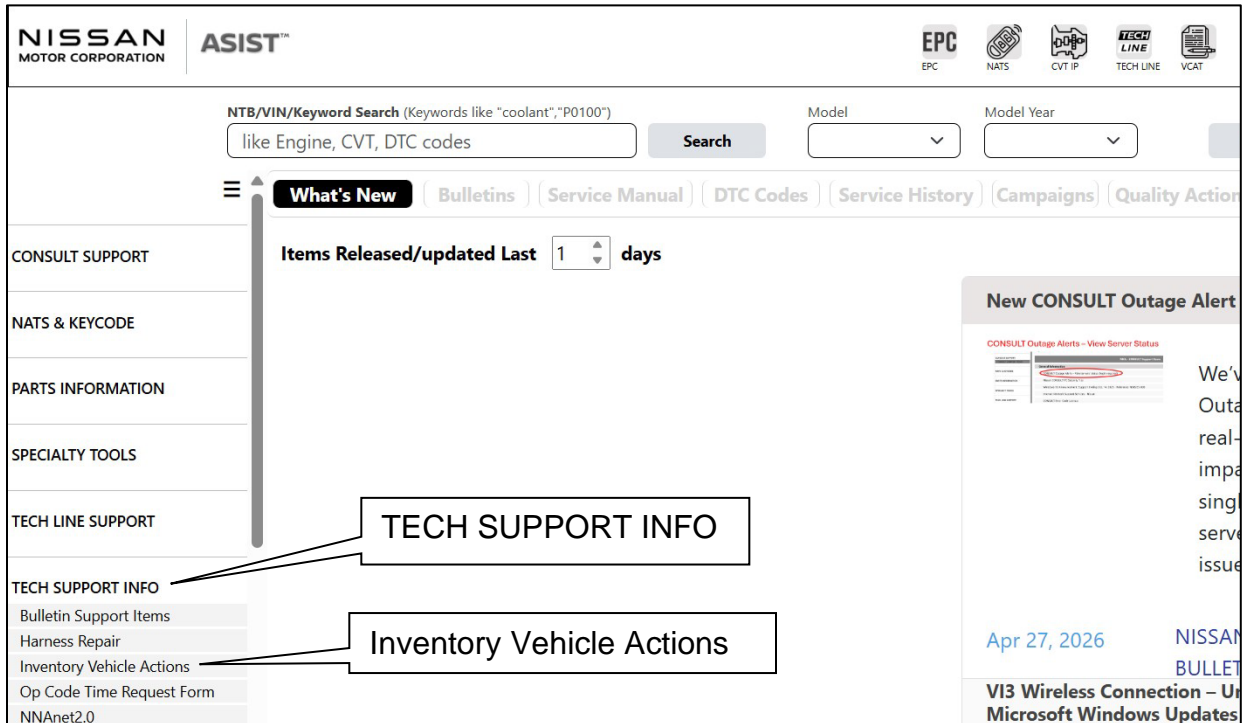


Figure 9

16. Select **Airbag to VIN Registration**.

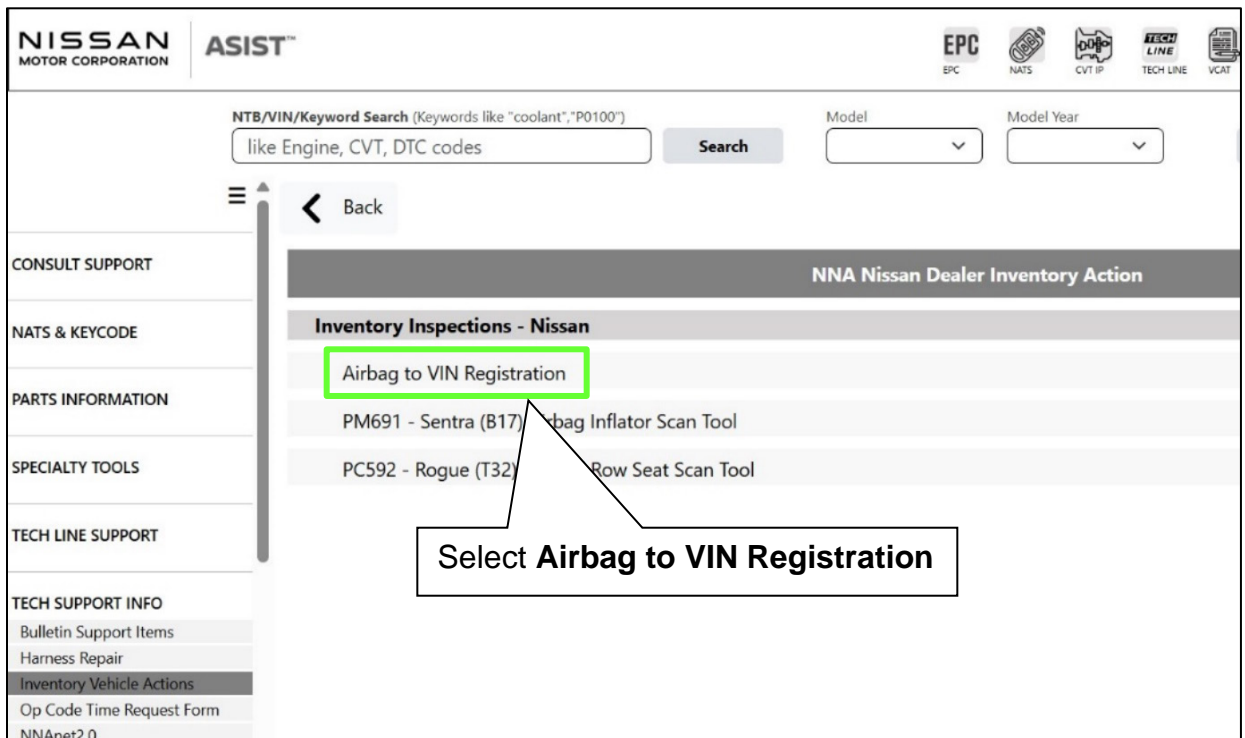


Figure 10

17. Use the quick scan tool to scan the bar code (VIN) on the vehicle B-pillar label.

HINT:

- Some labels may not scan quickly.
- Hold the scan tool approximately 6 inches away from the label.
- Hold the trigger down until the label is read (this may take several seconds).
- VIN will automatically populate (Figure 12).
- If needed, VIN can be entered manually.



Figure 11

[Airbag to VIN Registration](#)

4/29/2026 1:53:46 PM (Mountain Standard Time)

Please enter/scan the VIN and Airbag Inflator Serial Number

Dealer Code

VIN

Airbag Serial Number

Submit

VIN populates **HERE**

Step 19; see next page.
(Select **Submit** after both fields are populated).

Figure 12

18. Use the quick scan tool to scan the bar code serial number of the new Driver Air Bag Inflator (Figure 13 and Figure 14).

- The serial number will automatically populate (Figure 12 on page 8).

HINT: DO NOT scan the Driver Air Bag Module part number label.

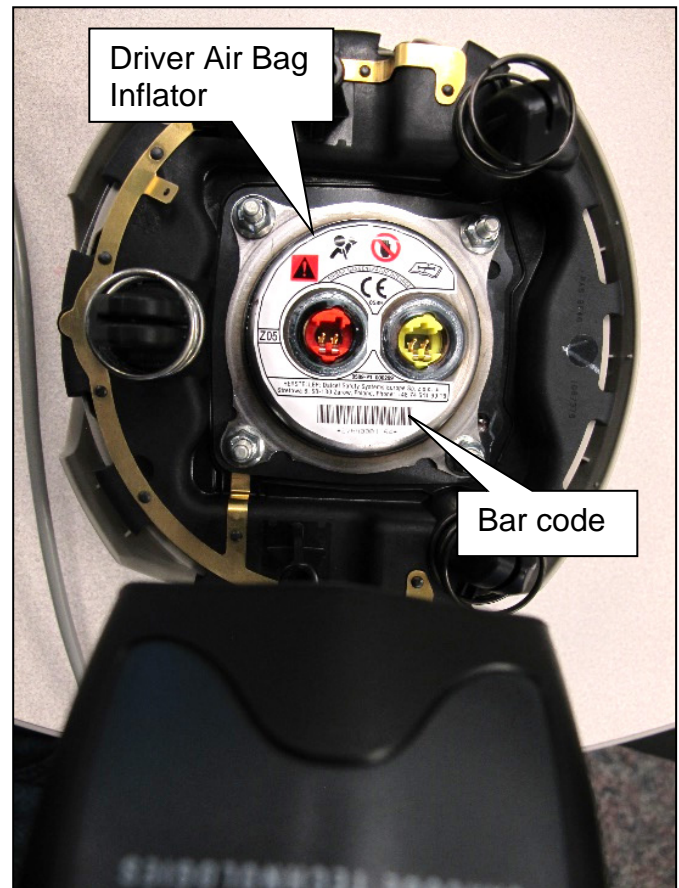


Figure 13

HINT: If needed, the bar code serial number (11 digits) can be entered manually.

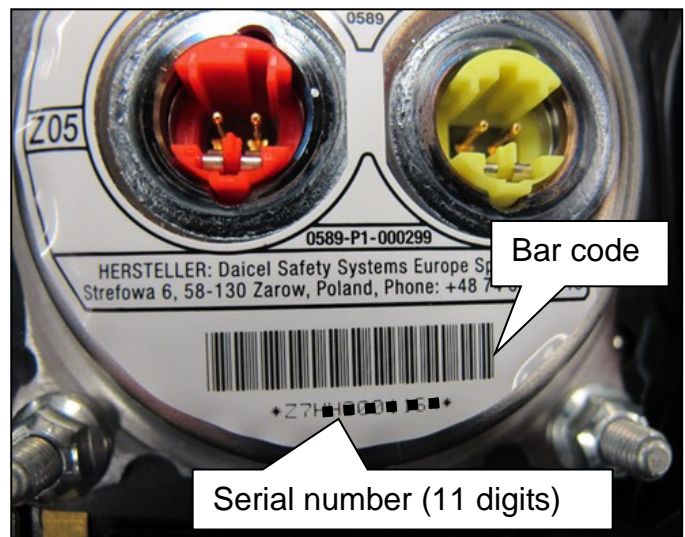


Figure 14

19. Select **Submit** on the ASIST screen (Figure 12 on page 8).

DRIVER SIDE AIR BAG MODULE INSTALLATION

20. Reinstall the Driver Air Bag Module into the vehicle in reverse order of removal.
 - Refer to the ESM: **H: RESTRAINTS > SR – SRS Airbag > REMOVAL AND INSTALLATION > DRIVER AIR BAG MODULE > Removal and Installation**
21. Connect both battery cable terminals – positive cable terminal first.
 - Battery terminal Torque Spec: 5.4 N·m (0.55 kg-m, **48 in-lb**)
22. Reset/reinitialize systems as needed.
 - Refer to the ESM, section **GI – General Information**, for a listing of systems that require reset/initialization after reconnecting the 12V battery.
 - Look in the GI section index for **ADDITIONAL SERVICE WHEN REMOVING BATTERY NEGATIVE TERMINAL**.
 - This list often includes items such as radio, power windows, clock, etc.
23. Turn the ignition ON and observe the air bag warning light.
 - Light should illuminate for 7 seconds and then go out.

HINT: If the air bag warning light does not operate as described above, there may be an issue not covered by this bulletin. Refer to ASIST and the appropriate Service Manual for additional diagnostic and repair information.

PARTS INFORMATION

DESCRIPTION	INTERIOR COLOR	PART NUMBER	QUANTITY
Driver Air Bag Module	G (Black)	K8E10-1FC9A	As Required
	W (Lt Gray)	K8E10-1FC9C	As Required

HINT:

- Make sure to return the removed (old/non-deployed) air bag module to the parts department in the box that the new air bag module came in.
- Follow the normal parts return procedures.

CLAIMS INFORMATION

Submit a "CM" line claim using the following claims coding:

CAMPAIGN ("CM") ID	DESCRIPTION	OP CODE	FRT
R26A1	Remove and Inspect Front Driver Air Bag Inflator (GOOD CONDITION)	R26A10	0.6
	Remove, Inspect and Replace Front Driver Air Bag Module (NO GOOD CONDITION)	R26A11	0.6

AMENDMENT HISTORY

PUBLISHED DATE	REFERENCE	DESCRIPTION
May 4, 2026	NTB26-028	Original bulletin published

