

Keystone RV Company

4/10/26

SAFETY ADVISORY # 26-482

Montana Underbelly Securement

Keystone is conducting a voluntary RECALL notification campaign in accordance with the National Highway Transportation and Safety Act. It has been decided that the vehicles in the recall population may have inadequate securement of the underbelly to the drop-down section of the frame. Under certain conditions during travel, the underbelly may come loose or detach from the vehicle, leading to an increased risk of a vehicle crash.

Models Included: 2026 Montana 3100RL

Serial Number Ranges: T4700376 – T4700796

Note – Check serial number on Key Express to verify the campaign is open. Some vehicles were repaired before they left Keystone.

Parts Required: 2 – KRV # 790039 - Crossmember - C Channel - 72 1/8" x 2.155" - 12 GA - P&O - Powder Coated - Black (*This part may be ordered in bulk without a VIN*)

#14 x 1 1/4" - 3/8" hex washer head self-drilling screws (Purchase locally)

Tools Required: - Screw gun - 3/8" hex bit - Tape measure

When performing warranty or recall service, please make certain that appropriate Personal Protective Equipment (PPE) is used.

The remedy is to install two crossmembers to the I-beams across the drop-down section of the frame with additional securement points of the underbelly.

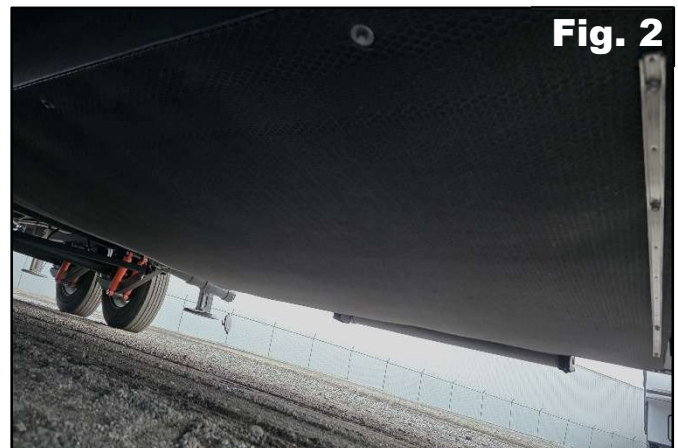
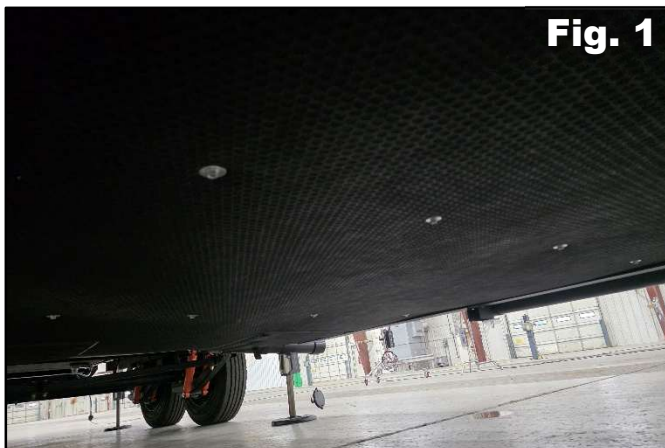
REPAIR INSTRUCTIONS

Step 1

Locate the trailer on a level, flat, hard surface. Chock the wheels.

Step 2

Inspect the underbelly of the drop-down section of the frame for securement points across the underbelly to existing crossmembers (See Fig.1), if present and adequately secured throughout then proceed to the warranty reimbursement-inspection only section of the advisory. If there are no securement points going across the underbelly (See Fig. 2) then proceed to the next step.



Step 3

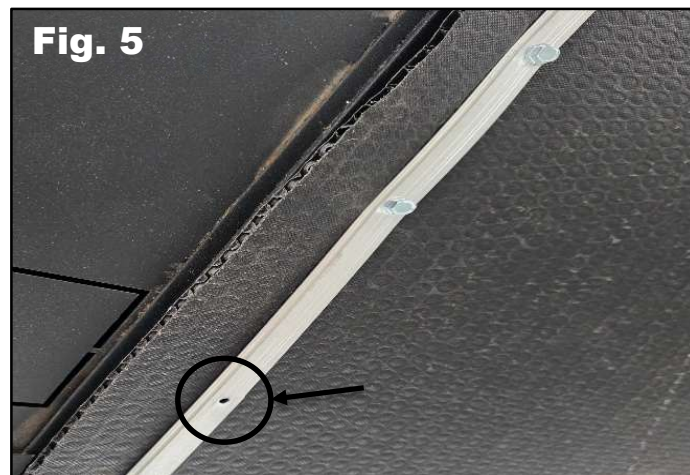
Measure from the front of the RV frame back along the I-beam, use a non-permanent writing utensil to make a mark on the I-beam at 60" and 90", repeat the process on the opposite side of the RV.

Step 4

Align the crossmembers (KRV # 790039 - Crossmember - C Channel - 72 1/8" x 2.155" - 12 GA - P&O - Powder Coated – Black) on center at the marked 60" and 90" locations under the I-beam. Use a screw gun and two #14 x 1 1/4" - 3/8" hex washer head self-drilling screws to secure each crossmember thru its two existing holes into the interior bottom flange of the I-beam. Repeat the process on the opposite side of the RV. See Fig.3 – Fig.4

**Step 5**

Inspect the retainer trim securing the underbelly at the front and rear of the drop-down section of the frame for any unsecured screw locations. Use #14 x 1 1/4" - 3/8" hex washer head self-drilling screws at all applicable locations found for additional securement of the underbelly. See Fig. 5



WARRANTY REIMBURSEMENT

INSPECTION ONLY

Submit the claim on Key Express using **Flat Rate Code # 7148242L**

In the Complaint section note: Safety Advisory # 26-482

In the Cause section note: Inspect underbelly securement

In the Correction section note: No repair needed

The amount of time authorized for this repair is **0.3 hour**.

REPAIR

Submit the claim on Key Express using **Flat Rate Code # 7148242K**

In the Complaint section note: Safety Advisory # 26-482

In the Cause section note: Secure underbelly

In the Correction section note: Installed crossmembers – Secured underbelly

The amount of time authorized for this repair is **0.5 hour**.

PARTS DISPOSITION

No parts return required.

Please call Keystone RV Customer Service at **(866) 273-1450** if you have any questions.