

Rerouting the Generator Exhaust

Part Numbers Required:

0032478 – Backer, Plate

0050486 – NPS, Generator, Parts

0027928 – Hex Head Screws(6qty)

0028413 – 16x3/4 Screw(2qty)

0014170 – Carbon Monoxide Detector

Tools Required:

1/2" Socket

3/8" Socket

Screw Gun/ Impact

Step 1:

Locate the mounting flange of your exhaust under the unit. The flange will have two bolts holding it tight to the generator(See pic below)



Remove both bolts from flange.

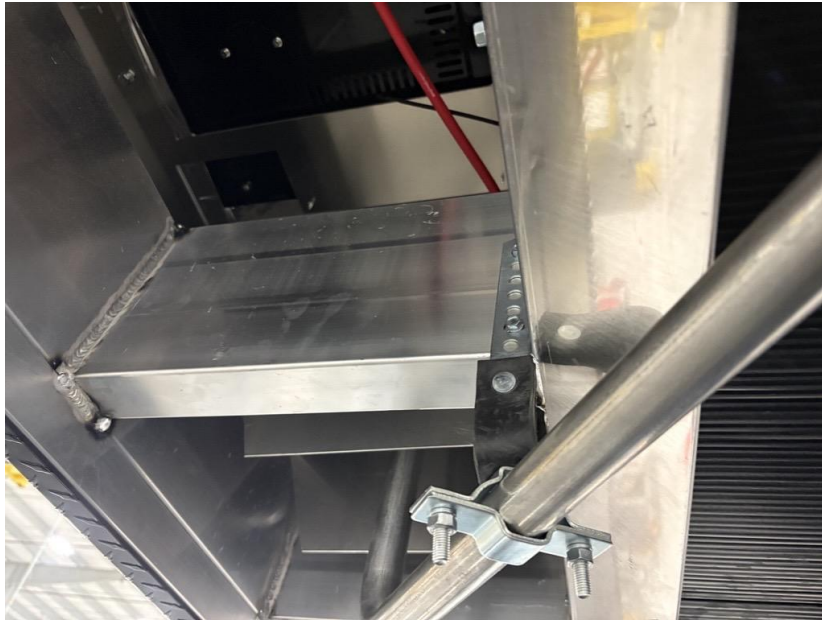
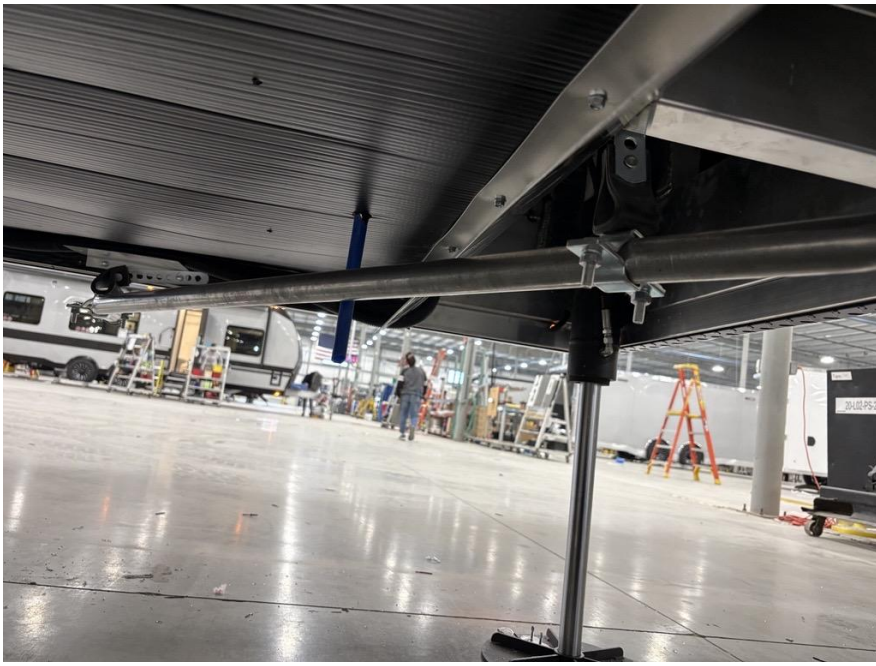
Next, look for the mounting brackets below the under belly. Remove them from their location, and remove the clamp from the exhaust.

Now to install the new exhaust, use the same flange & bolts that you used on the previous exhaust.



Next, install the heat shield above exhaust, and below the gas line. Take one of the mounting brackets, and place it as the picture shows above.

Last, place the other
mounting bracket
as the picture shows below



Now the exhaust is exiting further back on the unit.(see photo below)



Installing the CO detector:

The CO detector is to be mounted on the Ceiling, utilizing both mounting holes, Which will need to hit a cross member in Ceiling. Referencing the photo to the right, Install the detector to the left(Road Side Of the trailer) of the ceiling Vent. Place the detector 12" away from the Vent, utilize the screws in the ceiling



A reference on where the cross members are in the ceiling

