



SOW-SER-002

CHEVY - REAR BRAKE LINE FIX



IN PROCESS - STANDARD OPERATION WORKSHEET - " DOCUMENT UNCONTROLLED IF PRINTED"

PROCESS NAME: CHEVY - REAR BRAKE LINE FIX

| STATION | PAGE | DOCUMENT | REVISION | DATE | BY: |
|---------|--------|----------|----------|--------|-----------|
| SERVICE | 1 of 8 | SER-002 | A | 3/5/26 | MHECKAMAN |

QUALITY

SAFETY

OPERATION: [HOW TO CHECK AND FIX THE REAR BRAKE LINES ON CHEVY BUSES](#)

ATTENTION/IMPORTANT

REQUIRED PPE: **SAFETY GLASSES, BUMP CAP**

MATERIALS FOR SOW

| ITEM # | DESCRIPTION | PART # / PHOTO | QTY | U/M |
|----------|-------------|----------------|-----|-----|
| 1 | BRAKE FLUID | | | |
| 2 | | | | |
| 3 | | | | |

EQUIPMENT/TOOLS

| | |
|--------------|-------------|
| 7/16" WRENCH | 14MM WRENCH |
| | |
| | |
| | |
| | |
| | |

REVISION NOTES:

| STATION | PAGE | DOCUMENT | REVISION | DATE | BY: | QUALITY | SAFETY |
|-------------------------------------------------------------------------------------|--------|----------|----------|--------|-----------|---------------------|--------|
| SERVICE | 2 of 8 | SER-002 | A | 3/5/26 | MHECKAMAN | | |
| OPERATION: HOW TO CHECK AND FIX THE REAR BRAKE LINES ON CHEVY BUSES | | | | | | ATTENTION/IMPORTANT | |
| REQUIRED PPE: SAFETY GLASSES, BUMP CAP | | | | | | | |

Checking The Brake Lines

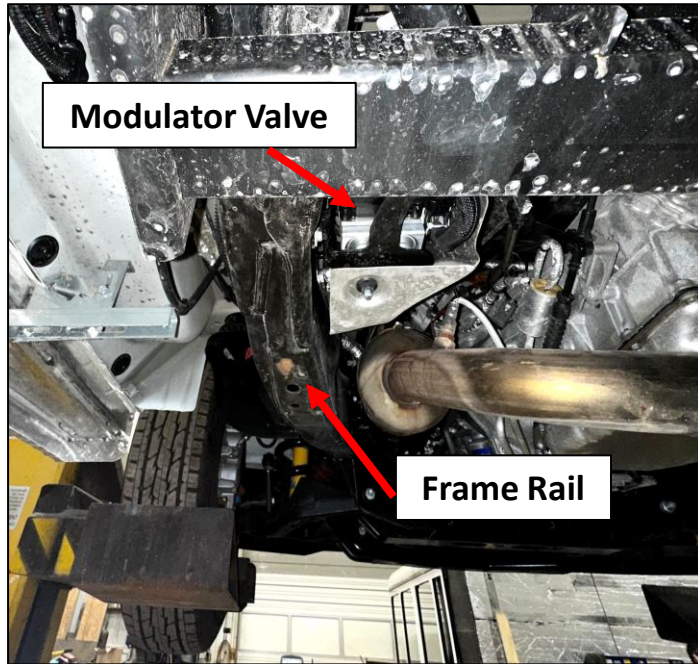


- Step #1** Verify the brake fluid is full, then use a vehicle lift and raise the bus in the air to access the modulator valve and the brake lines under the bus. (IMG. 1)

IMG. 1

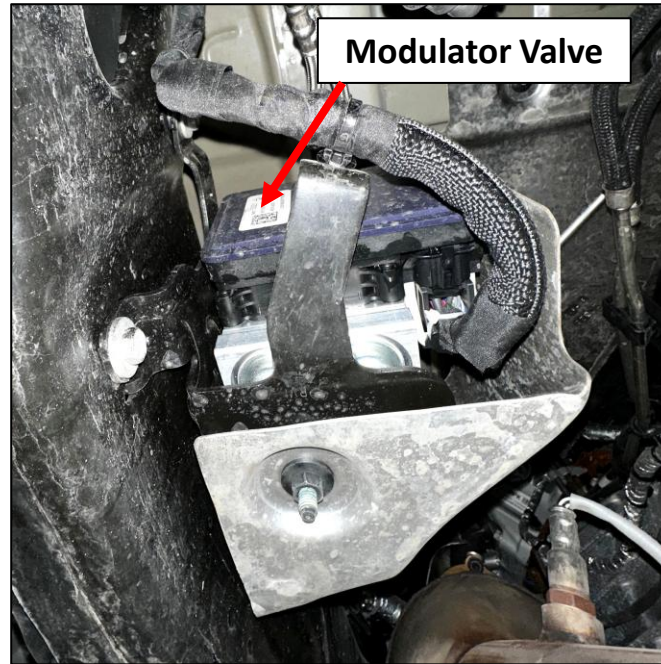
| STATION | PAGE | DOCUMENT | REVISION | DATE | BY: | QUALITY | SAFETY |
|-------------------------------------------------------------------------------------|--------|----------|----------|--------|-----------|---------------------|--------|
| SERVICE | 3 of 8 | SER-002 | A | 3/5/26 | MHECKAMAN | | |
| OPERATION: HOW TO CHECK AND FIX THE REAR BRAKE LINES ON CHEVY BUSES | | | | | | ATTENTION/IMPORTANT | |
| REQUIRED PPE: SAFETY GLASSES, BUMP CAP | | | | | | | |

Step #2 Locate the modulator valve under the driver side near the front of the bus, behind the frame rail. (IMG. 2, 3, & 4)



IMG. 2

Under driver side of bus looking towards the front of the bus.



IMG. 3

Under the bus looking up at the modulator valve.

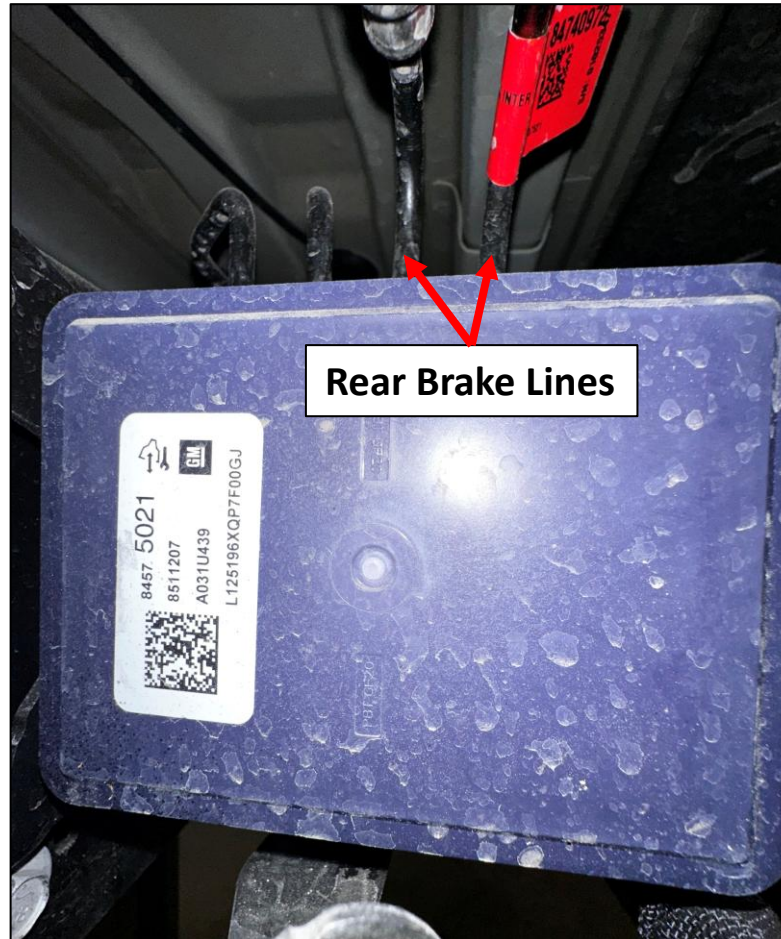


IMG. 4

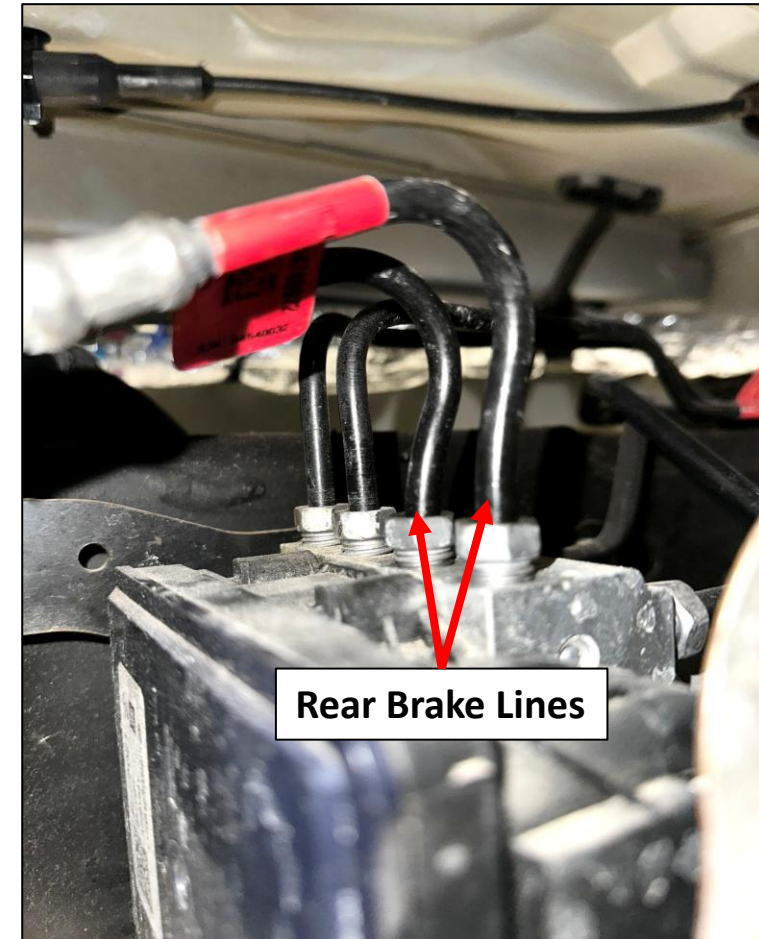
Modulator Valve

| STATION | PAGE | DOCUMENT | REVISION | DATE | BY: | QUALITY | SAFETY |
|-------------------------------------------------------------------------------------|--------|----------|----------|--------|-----------|---------------------|--------|
| SERVICE | 4 of 8 | SER-002 | A | 3/5/26 | MHECKAMAN | | |
| OPERATION: HOW TO CHECK AND FIX THE REAR BRAKE LINES ON CHEVY BUSES | | | | | | ATTENTION/IMPORTANT | |
| REQUIRED PPE: SAFETY GLASSES, BUMP CAP | | | | | | | |

Step #3 On top of the modulator valve there are 4 ports with brake lines. Looking towards the front of the bus, the 2 brake lines furthest to the right are the rear brake lines.



IMG. 5



IMG. 6

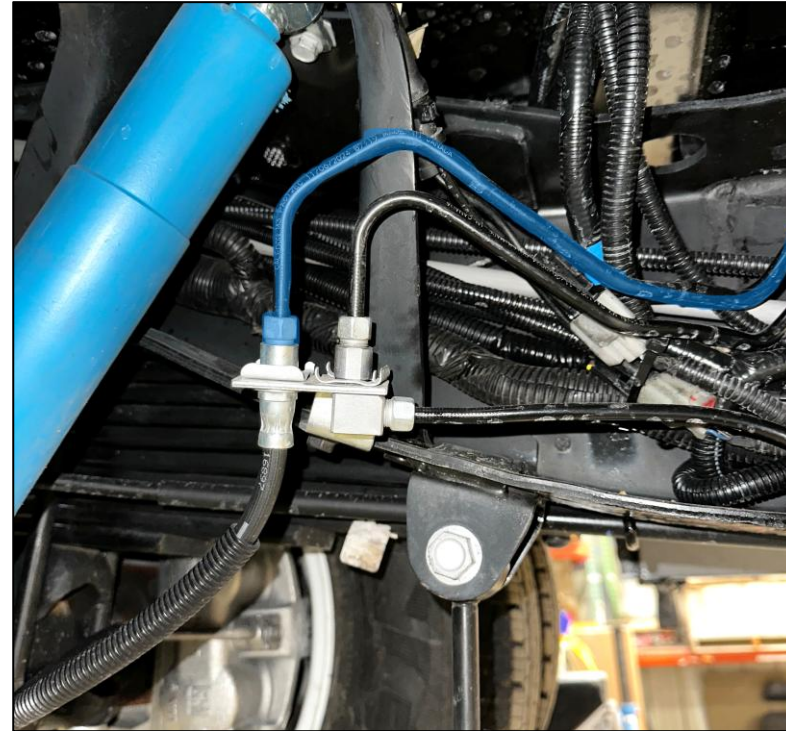
| STATION | PAGE | DOCUMENT | REVISION | DATE | BY: | QUALITY | SAFETY |
|-------------------------------------------------------------------------------------|--------|----------|----------|--------|-----------|---------------------|--------|
| SERVICE | 5 of 8 | SER-002 | A | 3/5/26 | MHECKAMAN | | |
| OPERATION: HOW TO CHECK AND FIX THE REAR BRAKE LINES ON CHEVY BUSES | | | | | | ATTENTION/IMPORTANT | |
| REQUIRED PPE: SAFETY GLASSES, BUMP CAP | | | | | | | |

Step #4 Follow the brake line (highlighted blue) that is attached to the port furthest to the right when facing the front of the bus, all the way to the back of the bus where it is connected to a bracket. (IMG. 7)

Step #5 This brake line should be attached to the rear roadside brake. (IMG. 8)



IMG. 7



IMG. 8

PROCESS NAME: CHEVY - REAR BRAKE LINE FIX

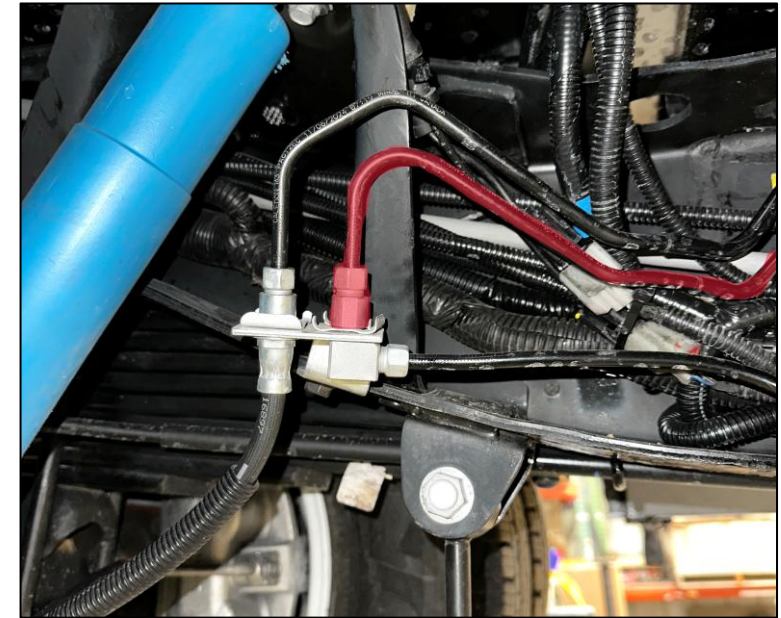
| STATION | PAGE | DOCUMENT | REVISION | DATE | BY: | QUALITY | SAFETY |
|-------------------------------------------------------------------------------------|--------|----------|----------|--------|-----------|---------------------|--------|
| SERVICE | 6 of 8 | SER-002 | A | 3/5/26 | MHECKAMAN | | |
| OPERATION: HOW TO CHECK AND FIX THE REAR BRAKE LINES ON CHEVY BUSES | | | | | | ATTENTION/IMPORTANT | |
| REQUIRED PPE: SAFETY GLASSES, BUMP CAP | | | | | | | |

Step #6 Follow the brake line (highlighted red) that is attached to the port 2nd furthest to the right when facing the front of the bus, all the way to the back of the bus where it is connected to a bracket. (IMG. 9)

Step #7 This brake line should be attached to the rear curbside brake. (IMG. 10)



IMG. 9



IMG. 10

If the brake lines are connected to the correct ports, no further action is required.

| STATION | PAGE | DOCUMENT | REVISION | DATE | BY: |
|---------|--------|----------|----------|--------|-----------|
| SERVICE | 7 of 8 | SER-002 | A | 3/5/26 | MHECKAMAN |

| | |
|---------|--------|
| QUALITY | SAFETY |
|---------|--------|

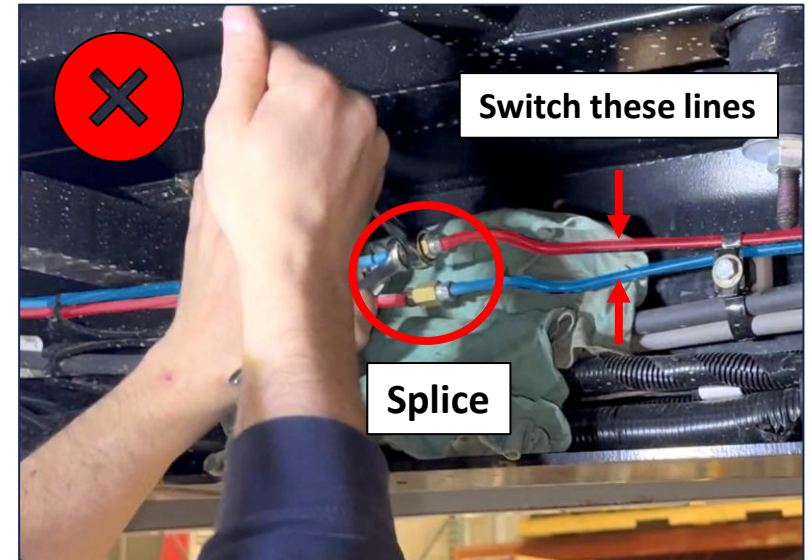
OPERATION: [HOW TO CHECK AND FIX THE REAR BRAKE LINES ON CHEVY BUSES](#)

ATTENTION/IMPORTANT

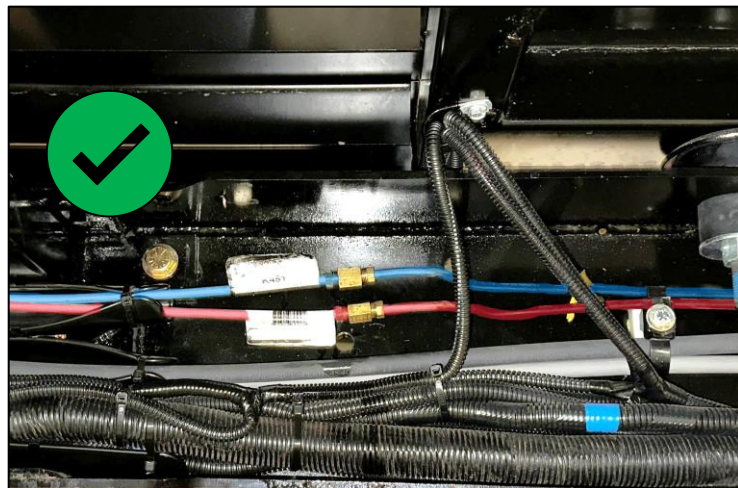
REQUIRED PPE: SAFETY GLASSES, BUMP CAP

Fixing The Brake Lines (Option A)

- Step #1** If the brake lines are connected to the wrong ports, they will need to be corrected.
- Step #2** Locate the brake line splice near the center of the bus. (IMG. 11)
- Step #3** Using a $\frac{7}{16}$ " wrench and a 14mm wrench, loosen and disconnect the brake line connectors. (IMG. 11)



IMG. 11



IMG. 12

- Step #4** Switch the lines around and reconnect the correct brake lines to each other. The brake line highlighted blue should go on the top and the brake line highlighted red should go on the bottom. Verify that the brake lines are not touching the frame and that the lines are not touching. (IMG. 11 & 12)
- Step #5** Bleed the rear brakes as required and refill the master cylinder to the correct level.

| STATION | PAGE | DOCUMENT | REVISION | DATE | BY: | QUALITY | SAFETY |
|-------------------------------------------------------------------------------------|--------|----------|----------|--------|-----------|---------------------|--------|
| SERVICE | 8 of 8 | SER-002 | A | 3/5/26 | MHECKAMAN | | |
| OPERATION: HOW TO CHECK AND FIX THE REAR BRAKE LINES ON CHEVY BUSES | | | | | | ATTENTION/IMPORTANT | |
| REQUIRED PPE: SAFETY GLASSES, BUMP CAP | | | | | | | |

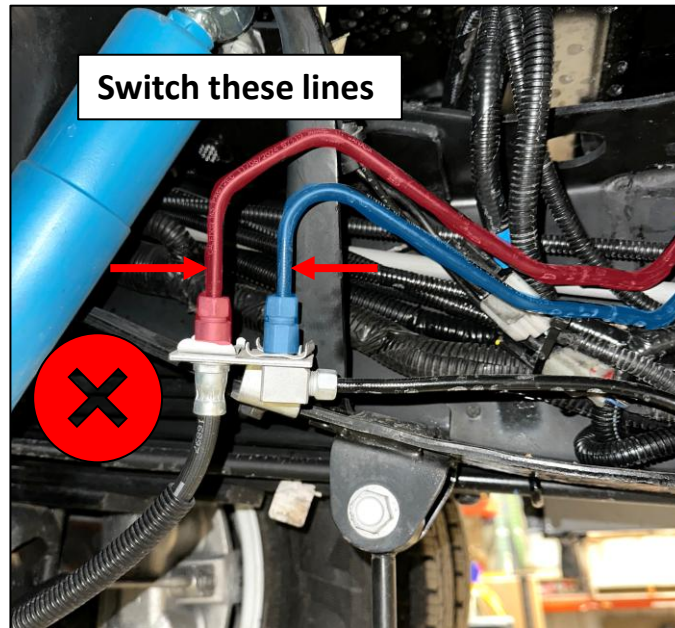
Fixing The Brake Lines (Option B)

Step #1 If the brake line splices are off set, the brake lines will need to be switched at the bracket which is located near the back driver side tire. (IMG. 13)

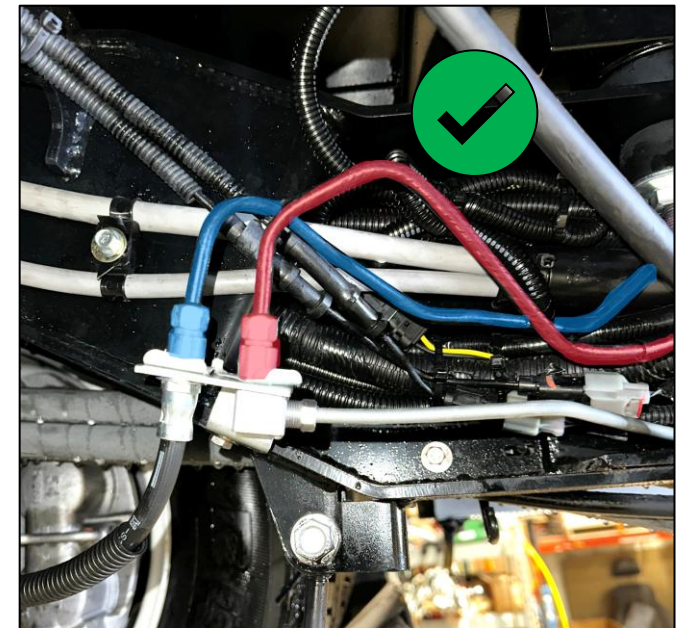
Step #2 Using a $\frac{7}{16}$ " wrench and a 14mm wrench, loosen and disconnect the brake line connectors.

Step #3 Switch the lines around and reconnect the correct brake lines to each other. The brake line highlighted blue should go on the left and the brake line highlighted red should go on the right. (IMG. 13 & 14)

Step #4 Bleed the rear brakes as required and refill the master cylinder to the correct level.



IMG. 13



IMG. 14