


## RECALL 26V131 REMEDY INSTRUCTIONS

 <b>FOREST RIVER</b>	Make(s): 2026 EUROPA & GRAND SPORT GT Model(s): EUC37CA-360 & GGC45CB-600 Model Year(s): 2026	Repair Code: RC-003-09-00-004817 Allotted Time: .40 HRS Inspection Code: N/A Allotted Time: N/A
	Concern: The distribution panel may not be bonded to the chassis ground.	Photo(s) Required: NO Prior Authorization Required: YES Part(s) Kit Number: N/A Part(s) Return: NO

Turn off LP Gas at LPG Tank(s). Disconnect the vehicles' battery Positive and Negative, disconnect any House battery(s) Positive and Negative, if equipped with a generator ensure it is off and lastly, ensure the vehicle is disconnected from shore power. Block any tires/wheels to prevent the vehicle from rolling. Failure to do so may result in electrocution, fire or other personal injury, property damage and/or death.

1. These instructions are for both distribution panels, each distribution panel needs a ground added.
2. Locate distribution panels at the bottom of the refrigerator cabinet.
3. Remove screws from distribution panel covers (see figure 1).
4. After covers are removed, remove the 6 screws holding each distribution panel to the cabinet (see figure 2)
5. Pull distribution panels out of opening to expose the back of the distribution panels.
6. The 3" hole located behind the front distribution panel is where the 8AWG copper wires will run down to the chassis (see figure 3).
7. From that 3" hole, the 8AWG copper grounds will run through the bay door opening to the chassis.
  - a. The bay door is the second bay door on the door side of the unit (see figures 4 &5).
8. From underneath the unit, access the chassis to screw the ground wires to the chassis with a star washer and ground lug (see figure 6). Ensure that the star washer is under the ground lug and makes contact with the frame.
9. After attached to the chassis, the wires are ready to be installed to the distribution panel. Loosen the grommet on back of the distribution panel (see figure 7) and feed the 8AWG copper wire through the grommet. Then attach to the ground bar torquing the terminal bar ground lug to 30-inch pounds (see figure 8).
10. Be sure to tighten the grommet that was loosened and install distribution panels back into openings.



Figure 1

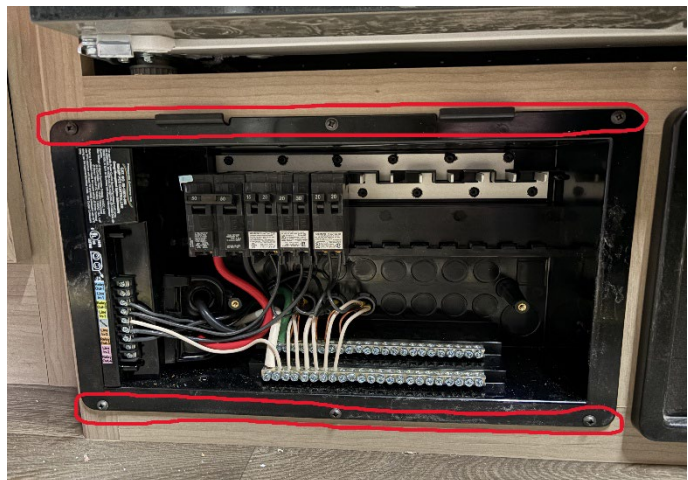


Figure 2

# RECALL 26V131 REMEDY INSTRUCTIONS



Make(s): 2026 EUROPA & GRAND SPORT  
GT  
Model(s): EUC37CA-360 & GGC45CB-600  
Model Year(s): 2026

Concern:  
The distribution panel may not be bonded to  
the chassis ground.

Repair Code: RC-003-09-00-004817  
Allotted Time: .40 HRS  
Inspection Code: N/A  
Allotted Time: N/A

Photo(s) Required: NO  
Prior Authorization Required: YES  
Part(s) Kit Number: N/A  
Part(s) Return: NO



Figure 3



Figure 4



Figure 5



Figure 6

# RECALL 26V131 REMEDY INSTRUCTIONS



Make(s): 2026 EUROPA & GRAND SPORT  
GT  
Model(s): EUC37CA-360 & GGC45CB-600  
Model Year(s): 2026

Concern:  
The distribution panel may not be bonded to  
the chassis ground.

Repair Code: RC-003-09-00-004817  
Allotted Time: .40 HRS  
Inspection Code: N/A  
Allotted Time: N/A

Photo(s) Required: NO  
Prior Authorization Required: YES  
Part(s) Kit Number: N/A  
Part(s) Return: NO



Figure 7

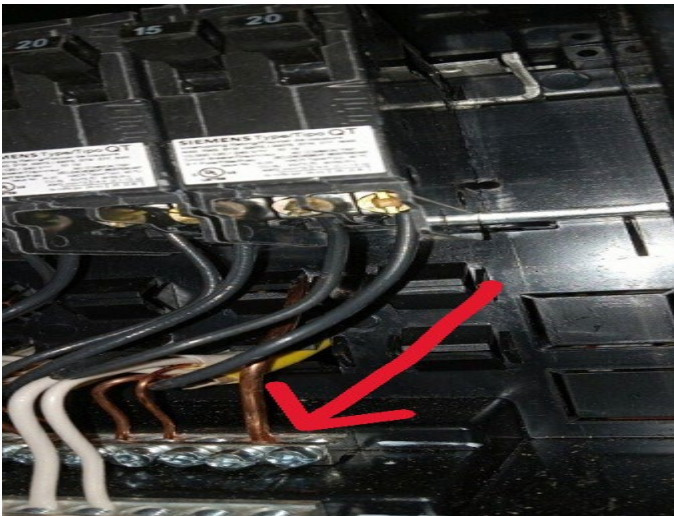


Figure 8