



View/Navion Trim Detachment

Classification	Parts Kit Required (Select 1 of 2 Only)			
Recall 202	Part #	RC796126701	Description	VIEW/NAVION AEROFENCE FASTENERS
	Part #	RC796226701	Description	VIEW/NAVION AEROFENCE FASTENERS/PLEXUS

Condition

On certain Winnebago Vehicles, the aerofence trim on the rear roof cap may loosen or detach while in transit. If the aerofence trim detaches, it may create a road hazard and increase the risk of a crash or injury.

Correction

The three different brackets that secure the Aerofence Trim will be reinforced with 13/64" rivets. A new locking Nyloc nut and washer for some brackets will also be installed. All installed rivets will need to be sealed with manus/sealant.

WGO Model Year	Revision	Make	Model	Model Code(s) (Floorplan)	WGO Built/Manufacturing Dates Impacted
2020	2	Winnebago	View	WM524D, WM524J, WM524V	6/10/2019 – 7/21/2022
2021	1				
2022	1				
2023	1				
2020	2	Winnebago	Navion	IM524D, IM524J, IM524V	6/6/2019 – 7/15/2022
2021	1				
2022	1				
2023	1				

Disclaimer: Read the entire instructions carefully before starting the procedure. If you have any questions, please contact the Winnebago Industries Technical Service Department by calling 1-866-653-4329 or by email: techservice@wgo.net . This document is confidential and is intended for dealer use only.

Parts/Kit Image Reference

Part/s Required – RC796126701 VIEW/NAVION AEROFENCE FASTENERS

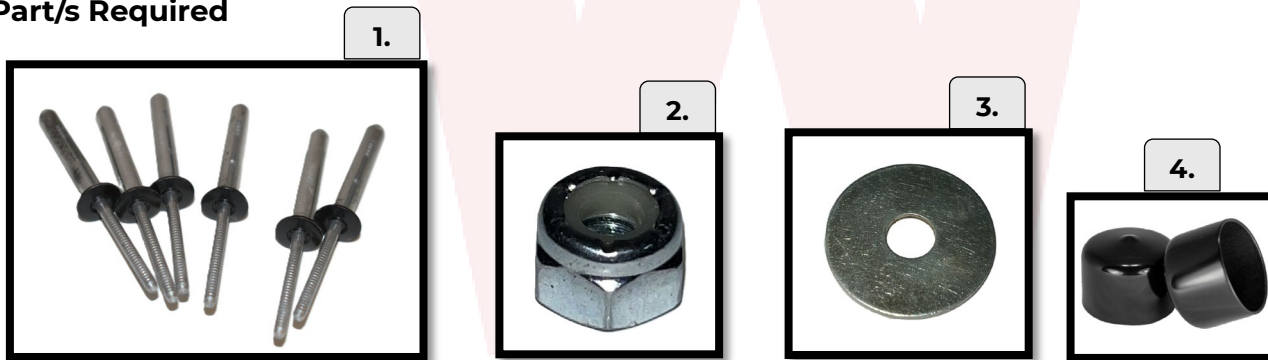
Kit Contains:

1. Rivet 118626-01-01A (8)
 - Only install 6. 2 are extra.
2. Nyloc Nut D29-04-00F (2)
3. Washer 142195-01-01A (2)
4. Caplug 177865-01-01A (2)

Shop Supplies

1. 7/16" Ratchet Wrench
2. Torque Wrench Capable of 3.6 ± 0.3 Nm
3. 7/16" Socket
4. #2 Phillips Bit
5. 13/64" Drill Bit
6. Drill
7. Rivet Gun
8. Masking Tape
9. Manus/Sealant
10. Shop Towels
11. Platform Ladder to Safely Access the Aerofence Trim Piece on the Driver's Side Roof Cap

Part/s Required



Parts/Kit Image Reference

Part/s Required – RC796226701 VIEW/NAVION AEROFENCE FASTENERS/PLEXUS

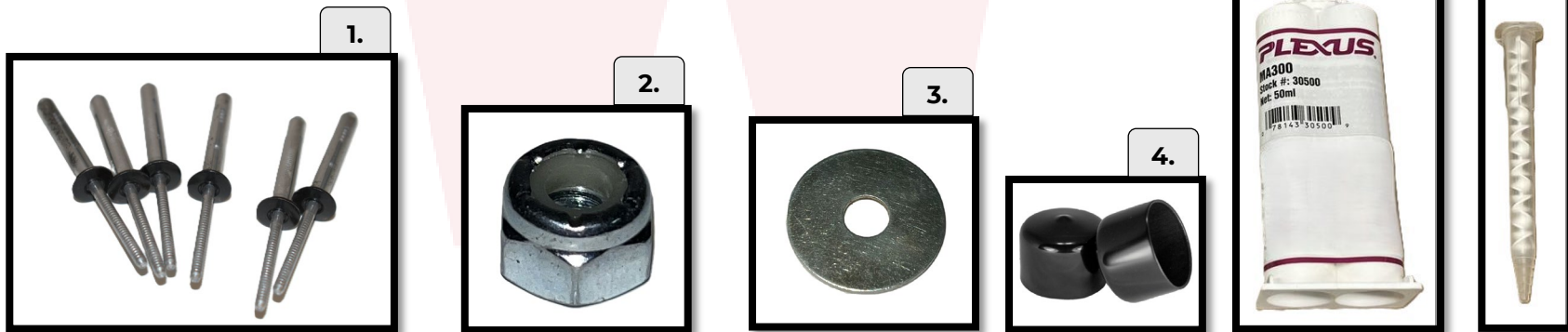
Kit Contains:

1. Rivet 118626-01-01A (8)
- Only install 6. 2 are extra.
2. Nyloc Nut D29-04-00F (2)
3. Washer 142195-01-01A (2)
4. Caplug 177865-01-01A (2)
5. Plexus MA300 – 112901-03-000 (1)
6. Mixer Nozzle – 112902-03-000 (2)

Shop Supplies

1. 7/16" Ratchet Wrench
2. #2 Phillips Bit
3. 13/64" Drill Bit
4. Drill
5. Rivet Gun
6. Torque Wrench Capable of 3.6 ± 0.3 Nm
7. 7/16" Socket
8. Masking Tape
9. Manus
10. Shop Towels
11. Platform Ladder to Safely Access the Aerofence Trim Piece on the Driver's Side Roof Cap

Part/s Required



Steps & Procedures

Step 1 – Prepare the Vehicle

- A. Gather all the tools needed for this repair. Position the platform ladder on the side of the vehicle, ensuring to lock it in place to safely begin the repair on the driver's side roof cap Aerofence trim piece.

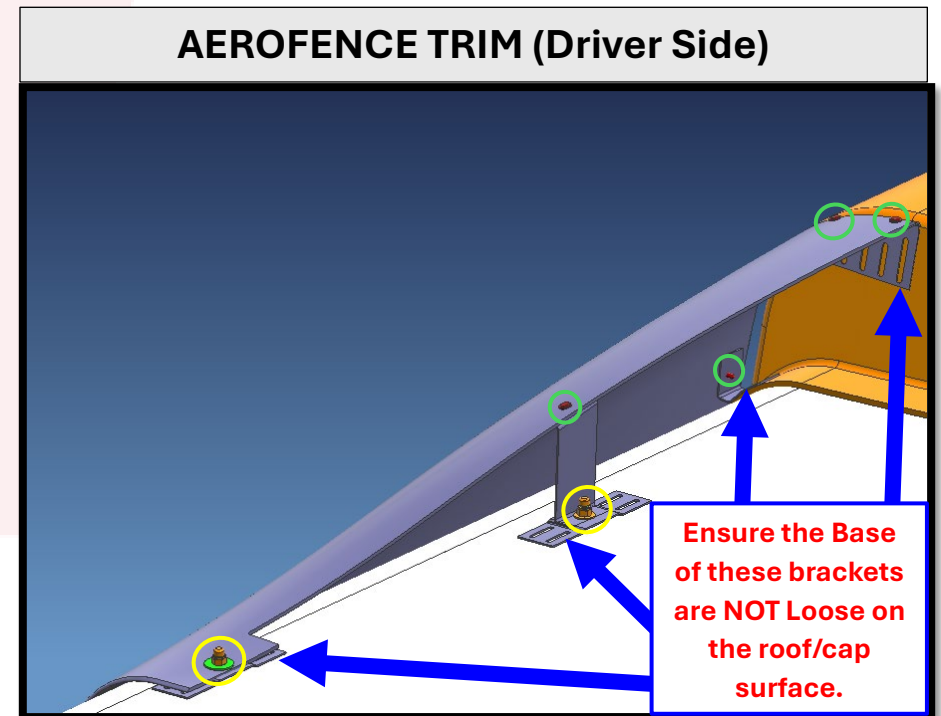
Note: Ensure the ladder's safety locking mechanism is locked when positioned appropriately for the repair. Ensure the ladder is not rubbing nor touching the vehicle to prevent any damage to the vehicle.



Step 2– Remove the Aerofence Trim Piece

- A. Use a 7/16" hand wrench to remove the 2 nuts and 2 washers on the bolts securing the trim to the roof of the vehicle (1 nut and washer per roof bracket bolt).
(Yellow circles for reference location)
- B. Use a #2 Phillips Bit and a drill or Phillip's screwdriver to remove the 4 screws (Green Circles for Reference Location).
- C. Keep the 4 screws you removed for installation later in the process.

Note: Ensure to carefully remove these fasteners to prevent damaging the paint on the vehicle and on the Aerofence trim piece.



3A - Inspect the Trim Brackets Adhered to the Vehicle

- A. Inspect the four mounting brackets for any signs of loosening or separation from the vehicle body. If none of the 4 are loose, skip Step 3B.

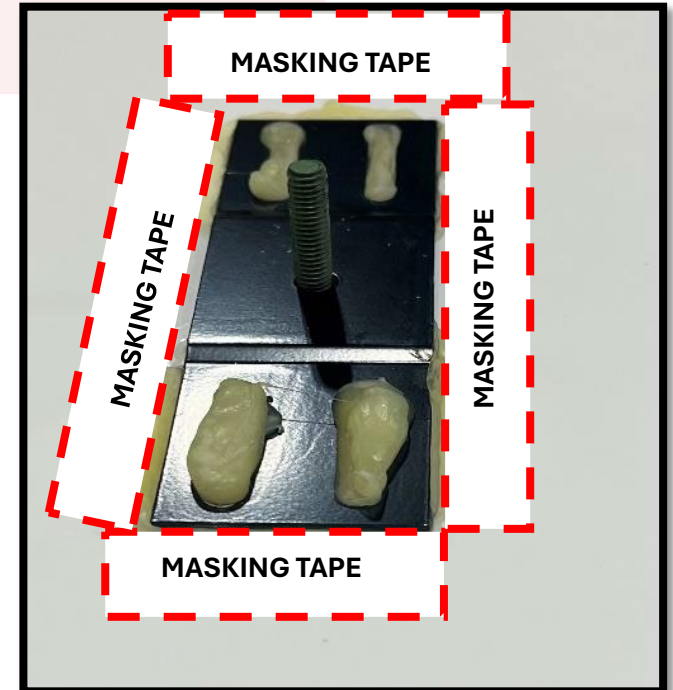
If any of the 4 brackets are loose, proceed to Step 3B. If none of the 4 brackets are loose, proceed to Step 4.

Step 3B – Re-adhere Loose Brackets

- A. Apply Masking Tape on all sides of the bracket location before removing the loose bracket(s) to ensure re-adhesion of the bracket(s) is at the appropriate location(s) on the roof.
- B. Carefully detach any loose brackets from the vehicle roof using a hand chisel. Once removed, clear all residual adhesive (Plexus) from the bracket surfaces to prepare them for re-adhesion.
- C. Using a hand chisel, carefully clear all residual adhesive from both the vehicle roof and the detached brackets. Ensure both contact surfaces are free of debris to allow for proper re-adhesion.

NOTE: If needed, use an oscillating saw to remove preexisting adhesive on the bracket(s) only, **NOT** on the vehicle surface.

- D. Ensure the bracket and roof surfaces are between 65°F and 85°F. Use an IR Temperature Gun if the temperature is uncertain.
- E. Clean the brackets and surrounding surface of the roof where the bracket will be re-adhered to of condensation, oils, or contaminants. Use a clean rag or disposable dry wipe. Do not use any type of solvent.
- F. Use an abrasive pad to scuff the mating surfaces to promote adhesion.
- G. Apply IPA (Isopropyl Alcohol) to mating surfaces for cleaning and adhesion promotion. Allow IPA to dry before applying adhesive. IPA can be applied using a clean rag or disposable dry wipe.



H. Re-adhere the brackets using plexus. Apply plexus to the arms of the bracket that will be touching on the fiberglass. Reinstall the brackets using the masking tape marks for appropriate location reference.

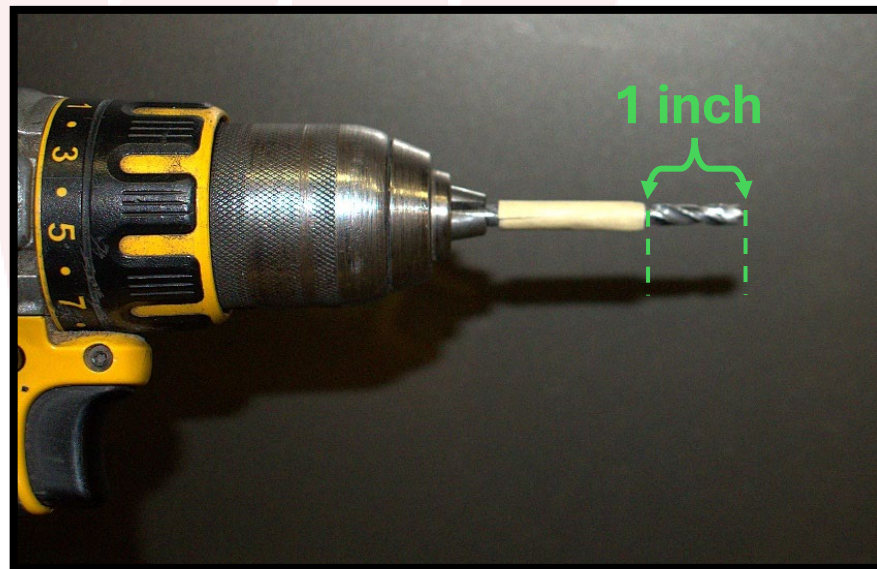
NOTE: Purge initial adhesive from cartridge until color is consistent. Adhesive cures in 3–6 minutes after mixing; work within this window. Reposition bracket in original location after adhesive application to the bracket. Confirm sufficient adhesive by checking for ooze-out on all sides and slots.

I. Let the adhesive cure for **at least 20 minutes** before moving or exposing the unit. Cured adhesive will harden and return to ambient temperature. Full retention is achieved after 24 hours.

Step 4 – Drill Holes and Install Rivets

A. Using a drill and a 13/64” drill bit, measure no more than 1 inch from the tip of the 13/64” drill bit and place masking tape to ensure drilling does not exceed one inch in depth for all 3 of the brackets.

CRITICAL: Exceeding this measurement can cause potential damage to the integrity of the roof and ceiling liner of the vehicle.



- B. Drill 2 holes into the Roof Cap Trim Bracket. (Reference the provided photos for exact placement)
- C. Drill 2 holes on the Roof (Middle) Trim Bracket. (Reference the provided photos for exact placement)
- D. Drill 2 holes on the Roof (Far End) Trim Bracket. (Reference the provided photos for exact placement)



ROOF CAP TRIM BRACKET



ROOF (MIDDLE) TRIM BRACKET



ROOF (FAR END) TRIM BRACKET

Step 4 – Apply a Dab of Manus & Install Rivets into the Drilled Holes

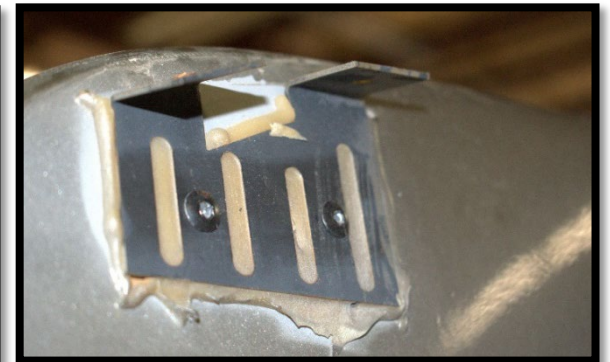
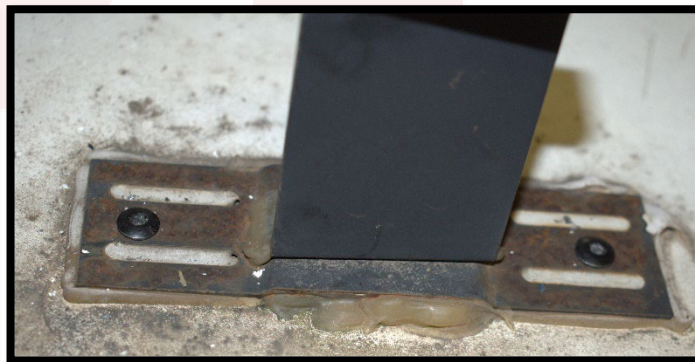
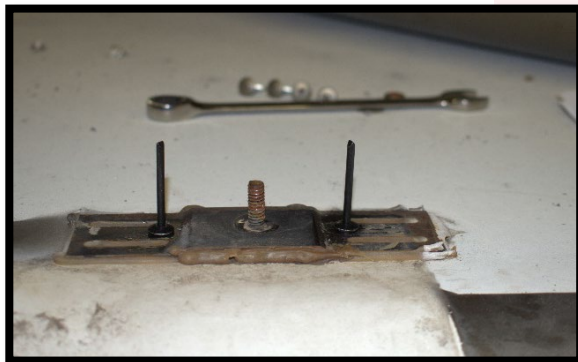
- A. Apply a small amount of sealant to each drill hole before inserting/pre-fitting the rivets.

NOTE: This ensures a watertight seal and prevents moisture intrusion at the rivet installation points.

- B. Using a rivet gun and the rivets (118626-01-01A) from the kit, pre-fit one rivet into each drilled hole. (2 Rivets per Bracket)

NOTE: Pre-fit the rivets on the 3 brackets to ensure they are not skewed/tilted when installed.

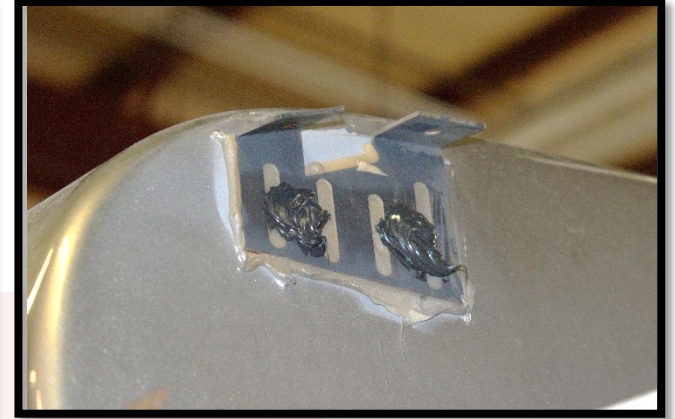
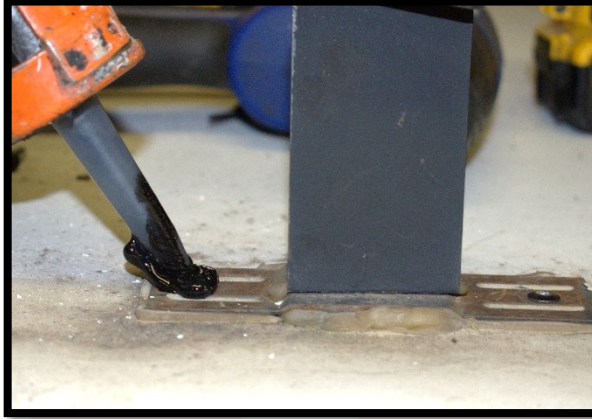
- C. Use the rivet gun to install the rivets and ensure the rivet mandrel is broken off once rivets are fully installed.



Step 5 – Apply Manus to the Rivets Installed

A. Use an appropriate amount of Manus to seal-off or cap seal all 6 of the Rivets Installed. Apply the manus on all the 6 rivet heads.

NOTE: Allow at least 20 minutes for the manus to be skinned.



Step 6 – Re-Install the Aerofence Trim Piece

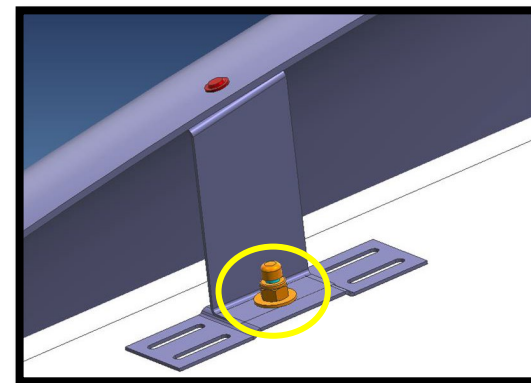
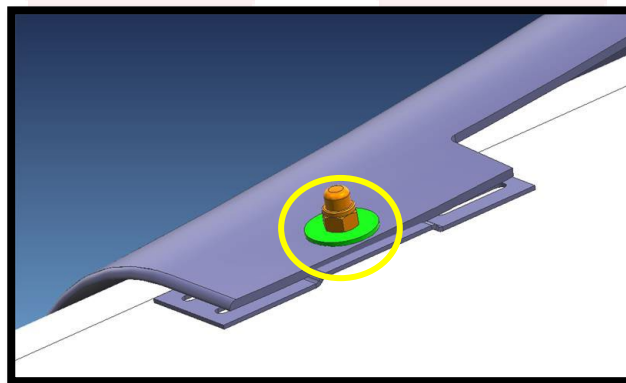
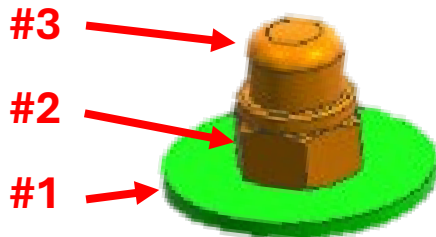
A. Install the trim piece back on the vehicle's roof.

B. Use a 7/16" torque wrench to install the 2 new washers and the 2 new nuts, one per bracket with the installed bolt (Yellow Circles for reference). The order is 1 Washer + 1 Nut + 1 Caplug per roof bracket bolt (Yellow Circles for reference).

CRITICAL: Ensure a torque of 32 ± 3 in-lbs. Apply torque carefully to prevent over-tightening or stripping the bolt threads.

C. Install the Caplugs provided in the kit (one on each bolt) once the nuts are secured on both the bracket bolts.

Order of Installation



- D. Use a #2 Philips Bit and drill or Philips screwdriver to re-install the 4 Screws you removed in Step 2 (Green Circles for Reference Location). Ensure you do NOT overtighten the screws.
- E. Once the Aerofence Trim Piece is secured back on the vehicle, the Repair is Now Complete!

