



HYUNDAI Technical Service Bulletin

GROUP RECALL	NUMBER 26-01-014H-1
DATE MARCH 2026	MODEL(S) KONA (SX2)

SUBJECT: FRONT STEERING KNUCKLE INSPECTION & REPLACEMENT
(RECALL 295)

This TSB supersedes 26-01-014H to add the Front Steering Knuckle Replacement procedure starting on page 14.

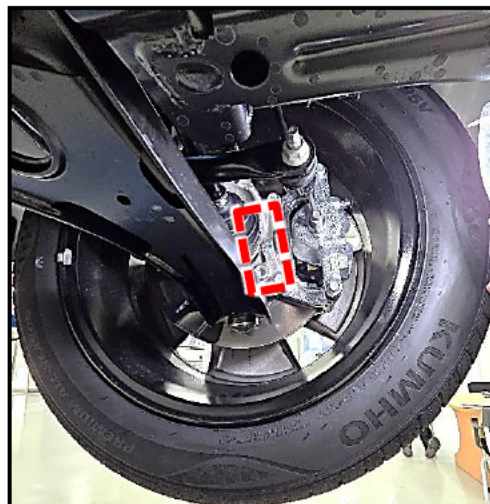
★ IMPORTANT

Vehicle repairs related to safety recalls are critically important and must be performed properly in accordance with TSB procedures. Review this bulletin in its entirety prior to beginning any repair work.

As required by federal law, dealers must not deliver new vehicles for sale or for lease to customers until all open recalls have been performed. Dealers must also perform all open recalls on used vehicles, demo, and rental vehicles prior to placing them into customer use and whenever an affected vehicle is in the shop for any maintenance or repair.

Access the “Vehicle Information” screen via WebDCS to identify open recalls.

Description: Certain Kona (SX2) vehicles manufactured with front steering knuckle(s) within a single production lot may have been improperly cast and installed into the subject vehicles, which could result in a crack developing in the knuckle assembly when subjected to high load inputs during certain driving maneuvers. This bulletin provides instructions to inspect the lot and mold numbers of the front steering knuckle(s), and if applicable, replace the affected front steering knuckle.

















Applicable Vehicles (Certain):

Model Year	Model	Production Dates
2026	Kona (SX2)	10/31/2025 – 12/22/2025

Circulate To: General Manager, Service Manager, Parts Manager, Warranty Manager, Service Advisors, Technicians, Body Shop Manager, Fleet Repair

Parts Information:




Model	Part Name	Part Number	Kit Parts	Figure	Remarks
Kona (SX2)	Knuckle Kit, LH	51710- KIT00QQH	Knuckle Front Axle, LH		Qty: 1
			Nut-Castle		Qty: 1 (Driveshaft axle lock nut)
			Pin		Qty: 1 (Lower ball joint pin)
			Nut-Castle		Qty: 1 (Lower ball joint castle nut)
			Pin		Qty: 1 (Tie rod end)
			Nut		Qty: 1 (Tie rod end)
			Washer-Plain		Qty: 2 (Lower ball joint and tie rod end)
	Knuckle Kit, RH	51711- KIT00QQH	Knuckle Front Axle, RH		Qty: 1
			Nut-Castle		Qty: 1 (Driveshaft axle lock nut)
			Pin		Qty: 1 (Lower ball joint pin)
			Nut-Castle		Qty: 1 (Lower ball joint castle nut)
			Pin		Qty: 1 (Tie rod end)
			Nut		Qty: 1 (Tie rod end)
			Washer-Plain		Qty: 2 (Lower ball joint and tie rod end)

SST Information:

Tool Name	Tool Number	Figure	Ordering Information
Ball Joint Puller	09568-1S100		Website: https://hyundaiesentialtools.com/ Email: Hyundaitools@snapon.com Phone: 1-855-763-9199 Hours: 7 AM – 7 PM CST

NOTE: This tool was previously distributed to dealers as part of an essential tools shipment under the Special Service Tools program.

Required Equipment/Supplies:

Name	Figure	Remarks
Plastic hammer		General shop equipment
Chisel or similar tool		
T60 Star Bit (Torx Bit)		

Warranty Information:

Model	Op. Code	Operation	Op. Time	Causal Part	Nature Code	Cause Code
Kona (SX2)	61D044R0	Front Steering Knuckle Inspection ONLY (LH & RH)	0.3 M/H	51710-BE100	A32	ZZ1
	61D044R1	Front Steering Knuckle Inspection (LH & RH), Replacement (LH), & Wheel Alignment	1.9 M/H			
	61D044R2	Front Steering Knuckle Inspection (LH & RH), Replacement (RH), & Wheel Alignment	1.9 M/H			
	61D044R3	Front Steering Knuckle Inspection (LH & RH), Replacement (both LH & RH), & Wheel Alignment	2.4 M/H			

NOTE 1: Submit claim on Claim Entry Screen as “Campaign” type.

NOTE 2: If any part(s) not subject to this TSB are found in need of replacement while performing the repair procedure, and the affected part(s) are still under warranty, the dealer may submit a separate claim using the same repair order. If the part(s) not subject to this TSB are out of warranty coverage, the dealer has the option to submit a PA Request for goodwill consideration on a case-by-case basis.

NOTE 3: This TSB includes repair validation photos. Op times include VIN, mileage, and repair validation photo(s) as outlined in the Digital Documentation Policy.

NOTE 4: The incident parts are subject to callback through the normal Warranty Technical Center (WTC) parts return process. **Claim is subject to debit if the part is not returned.**

Service Procedure:

DIGITAL DOCUMENTATION



This TSB includes repair validation photos. Refer to the latest Warranty Digital Documentation Policy for requirements.

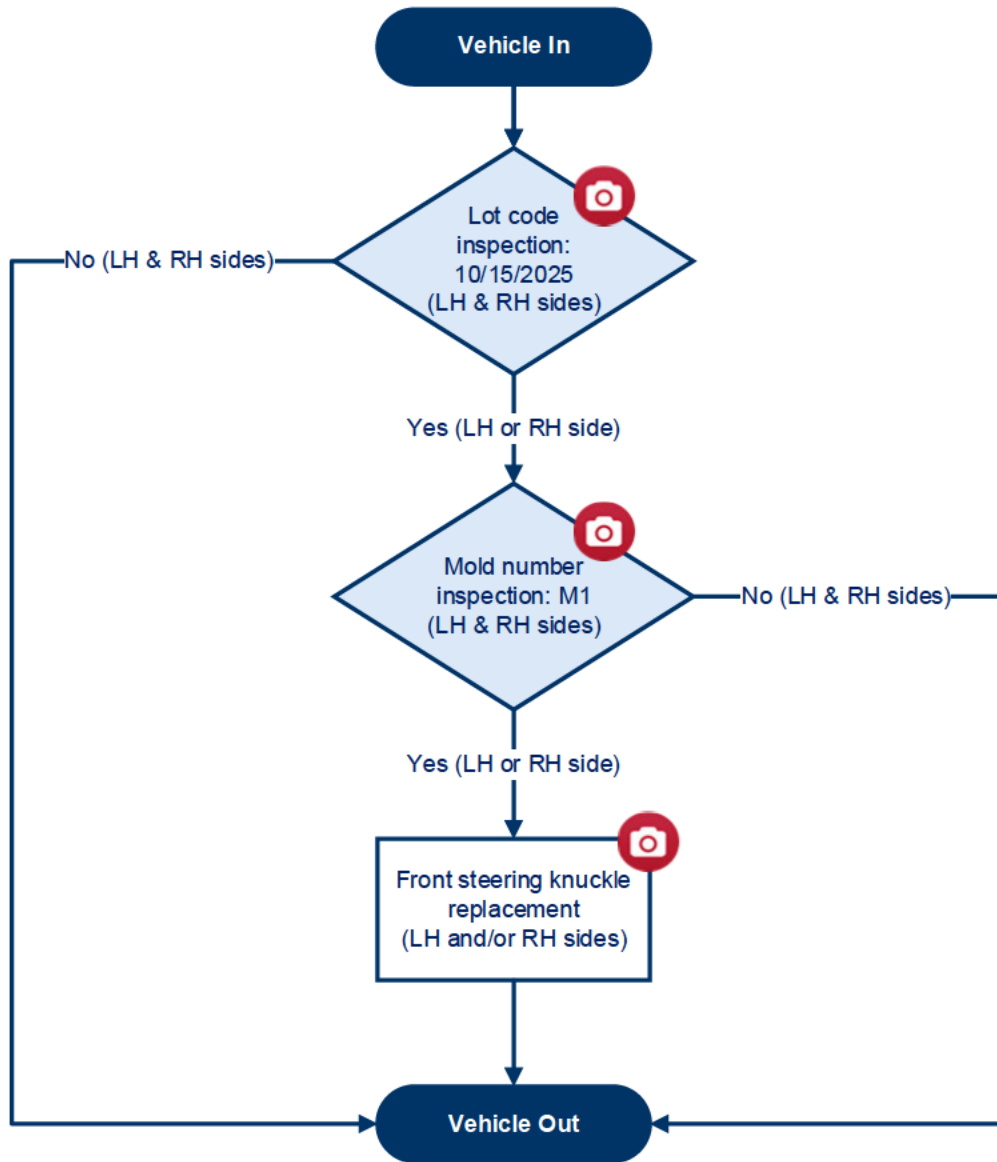
NOTICE

Applying the recommended torque to all fasteners is essential to reduce potential issues from occurring after the service procedure.

Table of Contents

- Flowchart.....6
- Front Steering Knuckle Lot Code Inspection7
- Front Steering Knuckle Mold Number Inspection11
- Front Steering Knuckle Replacement14

Flowchart

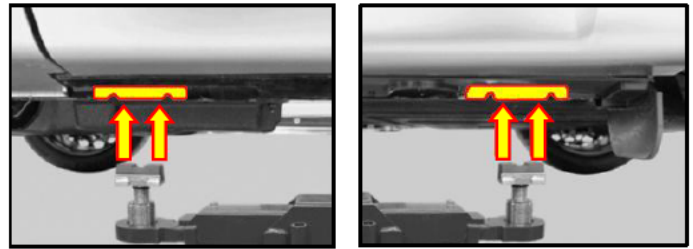


Front Steering Knuckle Lot Code Inspection

1. Visually check that the lift blocks are properly seated on the vehicle support points and raise the vehicle.

NOTICE

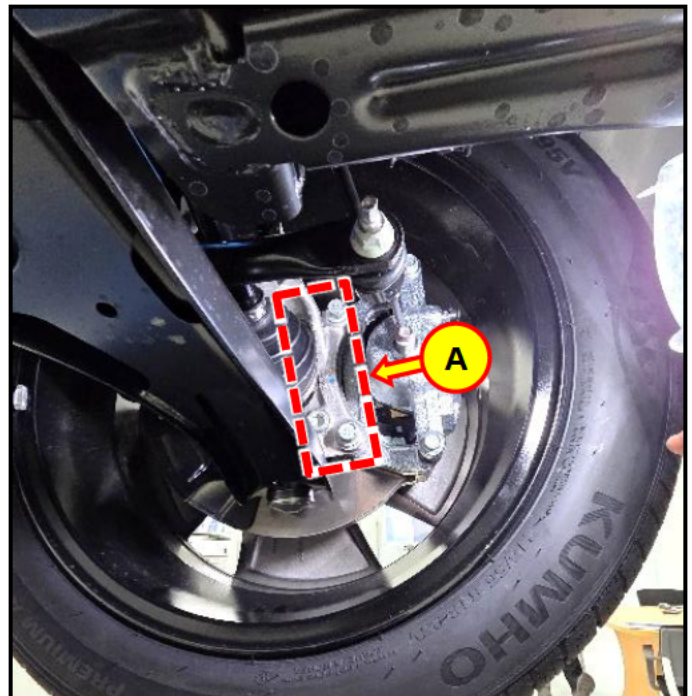
Raising the vehicle from anywhere other than the support points may damage vehicle components.



Refer to the shop manual:

- **General Information > Lift and Support Points > General Information**

2. Locate the front steering knuckle (A) on the inner side of the wheel.



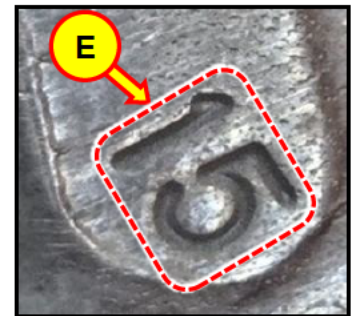
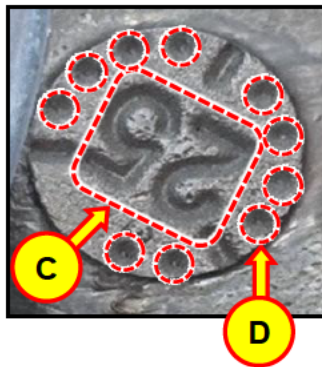
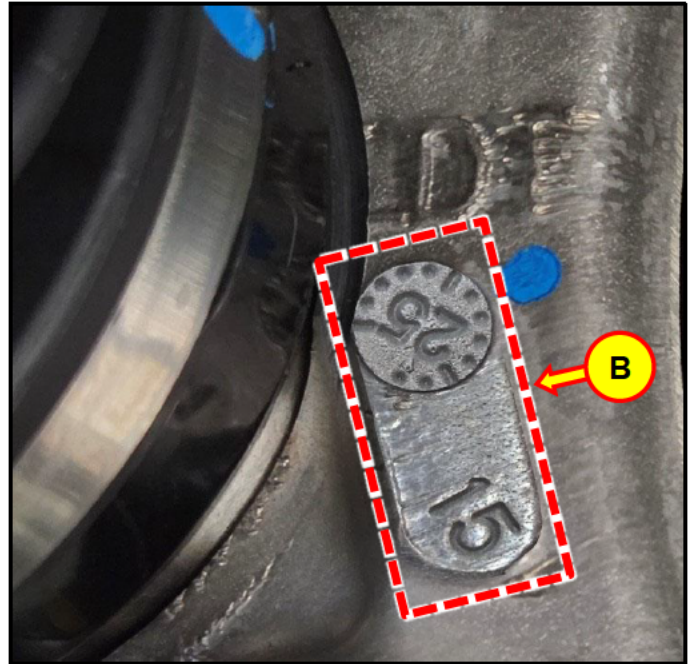
3. Check the lot code (B) to identify the production year, month, and day as described below.

i Information

Be sure to check the lot code on **BOTH** sides, LH and RH. It is recommended to start with the left side.

Example at right:

- C = Production Year: 2025
- D = Production Month: October (10 dots)
- E = Production Day: 15



4.

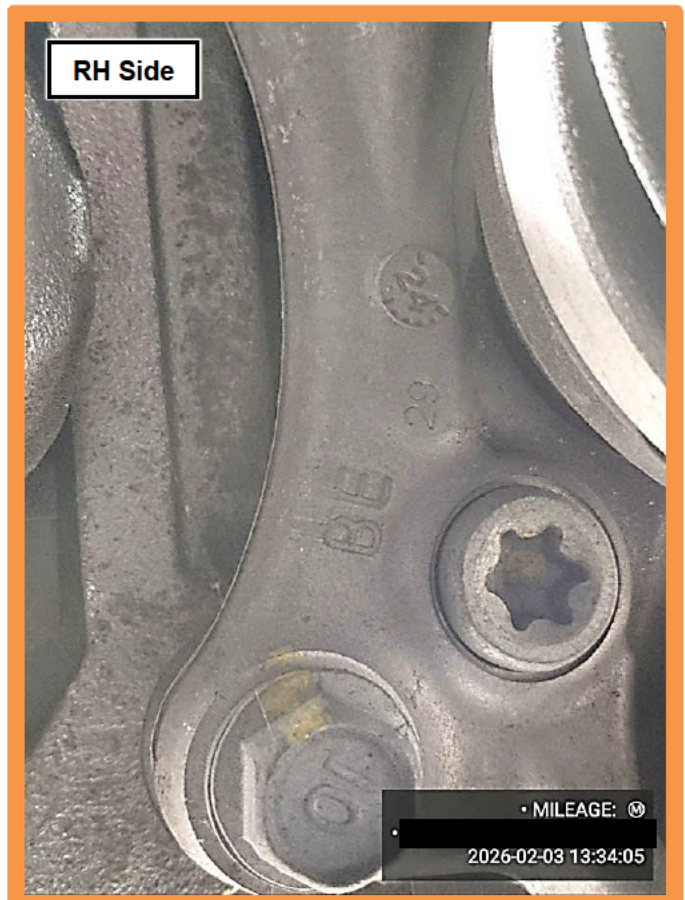
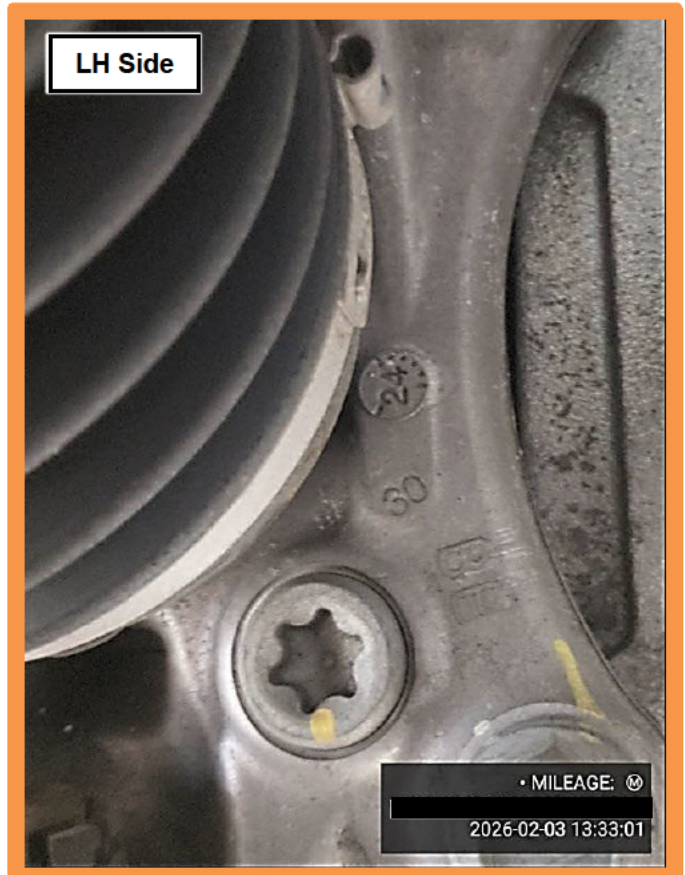
DIGITAL DOCUMENTATION



Using the STUI camera function, take photos of the lot code on **BOTH** LH and RH sides.

Upload the photos to STUI.

NOTE: If the STUI camera function is **NOT** used, write the last 6 digits of the VIN and date of repair on a piece of paper to include in the photo.

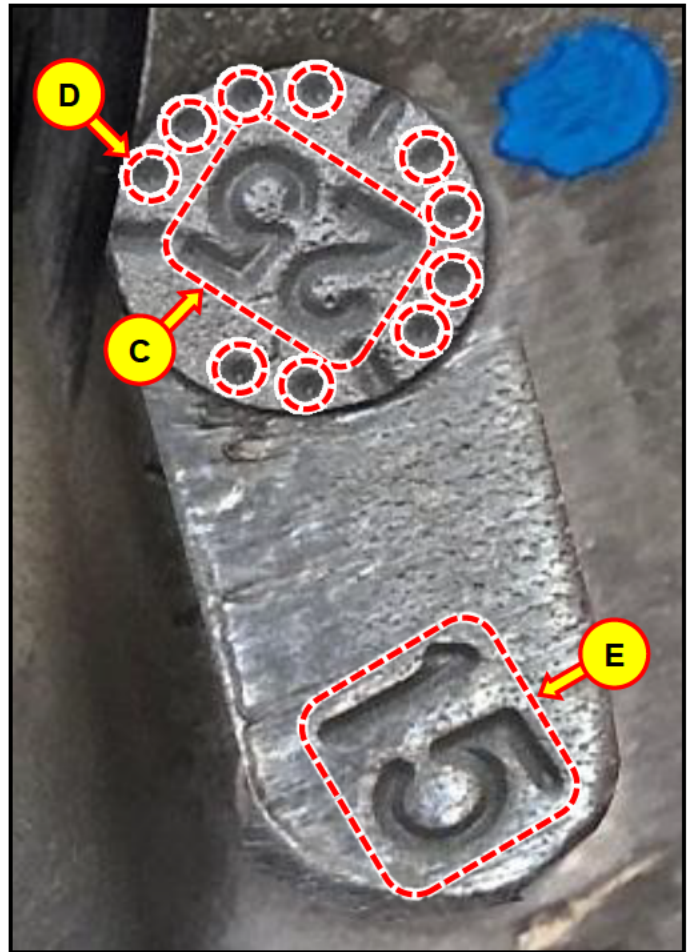


5. If the lot code is **October 15, 2025**, or if the code is **NOT** readable, proceed to the [Front Steering Knuckle Mold Number Inspection](#) procedure.

- C = Production Year: 2025
- D = Production Month: October (10 dots)
- E = Production Day: 15

6. If the lot code is **NOT** October 15, 2025 (e.g., any other date combination), then the front steering knuckles are **OK**.

The service procedure is now complete.



Front Steering Knuckle Mold Number Inspection

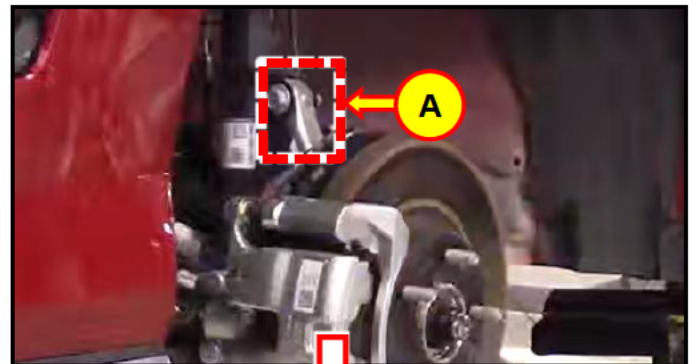
1. With the vehicle still on the lift, remove both front wheels.

Tightening Torque:

lb-ft	87
N.m	118



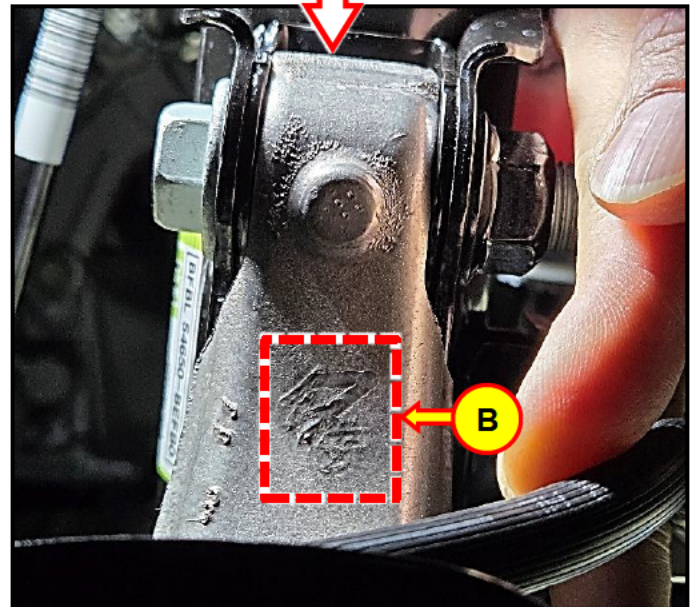
2. Locate the mold number on the front steering knuckle (A).



3. Check the mold number (B) stamped in the front steering knuckle.

***i* Information**

Be sure to check the mold number on **BOTH** sides, LH and RH.



4.

DIGITAL DOCUMENTATION



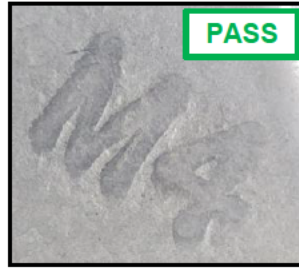
Using the STUI camera function, take a photo of the mold number on **BOTH** LH and RH sides.

Upload the photos to STUI.

NOTE: If the STUI camera function is **NOT** used, write the last 6 digits of the VIN and date of repair on a piece of paper to include in the photo.



5. **PASS:** If the mold number is **NOT** M1 (e.g., any other number), then the front steering knuckle is **OK**.



FAIL: If the mold number is **M1** on **either** the LH or RH side, or if the code is **NOT** readable, proceed to the [Front Steering Knuckle Replacement](#) procedure.



6. Reinstall the front wheels.
7. The service procedure is now complete.

Front Steering Knuckle Replacement

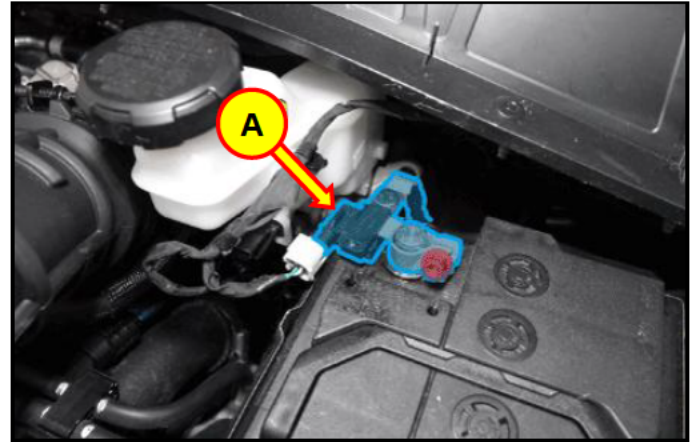
i Information

If both front steering knuckles need to be replaced, follow the steps below for both sides.

1. With the vehicle still on the lift, disconnect the negative (-) battery terminal (A).

Tightening Torque:

lb-ft	6.5
lb-in	78
N.m	8.8



2. Loosen the front wheel nuts, then remove the front wheel and tire (B).

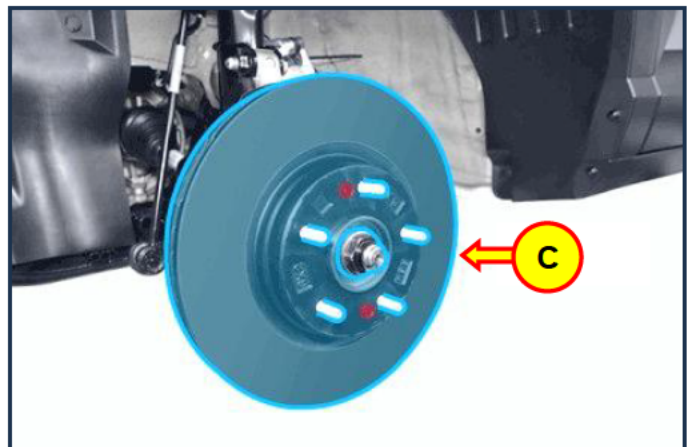
Refer to the shop manual:

- **Suspension System > Tires/Wheels > Wheel > Removal**



3. Remove the front brake disc (C) by referring to the shop manual:

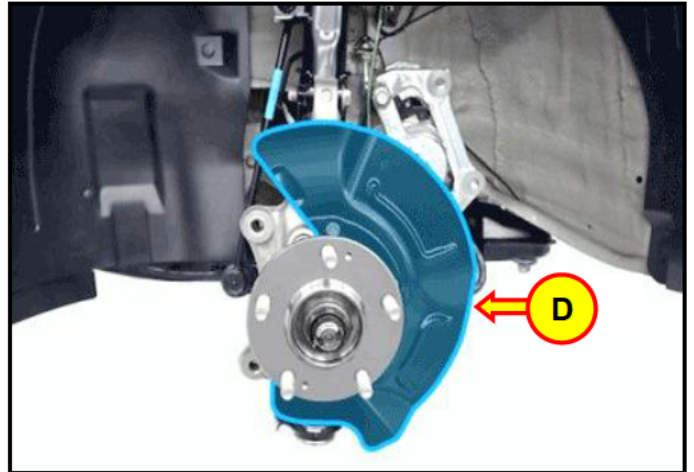
- **Brake System > Brake System > Front Brake Disc > Removal**



4. Remove the dust cover (D) after removing the bolts.

Tightening Torque:

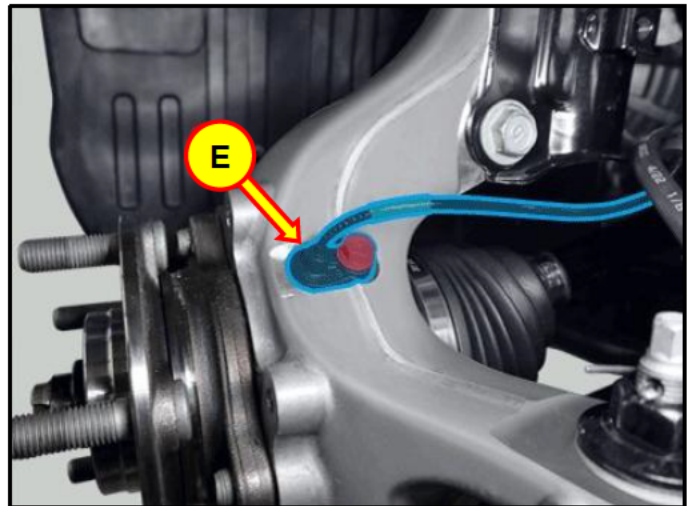
lb-ft	6.5
lb-in	78
N.m	8.8



5. Disconnect the front wheel speed sensor (E) after removing the bolt.

Tightening Torque:

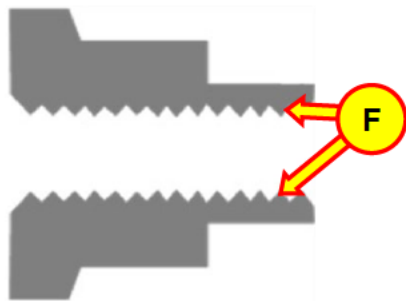
lb-ft	7.2
lb-in	86
N.m	9.8



6. Use a chisel or appropriate tool to unstake the driveshaft axle lock nut.

NOTICE

Unstake the driveshaft axle lock nut by using a chisel or appropriate tool and then loosen the lock nut to prevent damaging the driveshaft threads (F).



7. Remove the driveshaft axle lock nut (G).

Tightening Torque:

lb-ft	210
N.m	284

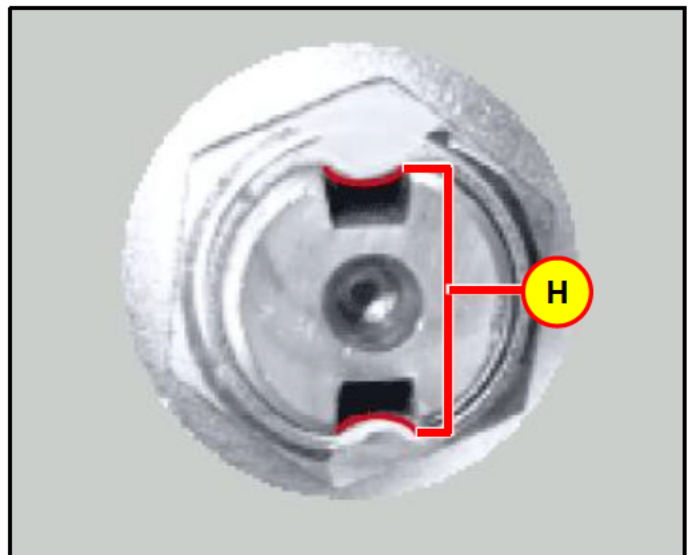
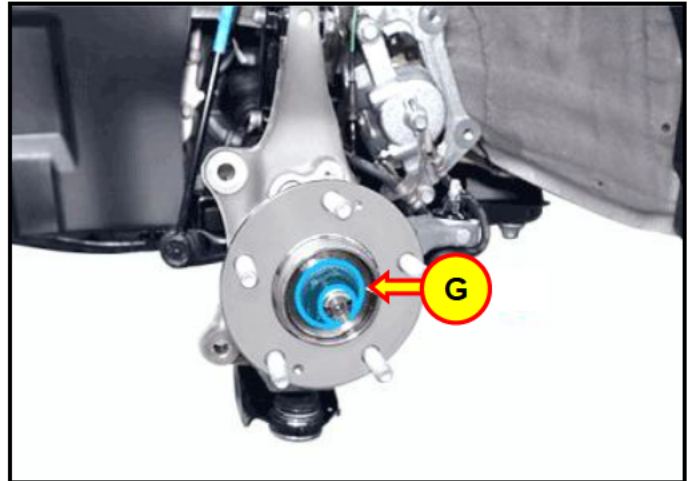
NOTICE

The driveshaft axle lock nut **MUST** be replaced with a new part.

NOTICE

During reinstallation, tighten the driveshaft axle lock nut to the specified torque while pressing the brake pedal. After tightening the lock nut, stake the lock nut using a chisel or an appropriate tool in two places (H).

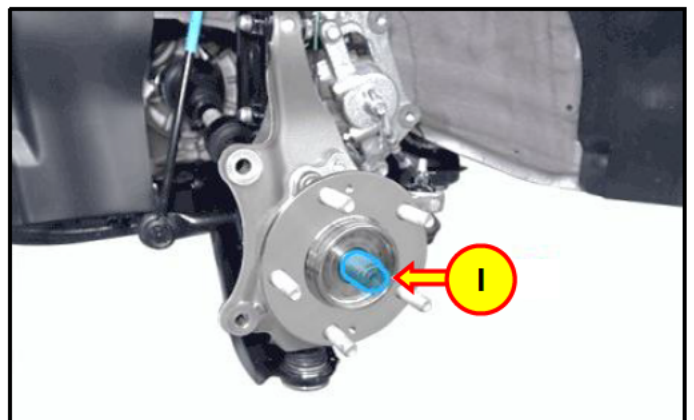
Stake depth: 1.5 mm (0.06 or 1/16 in.)



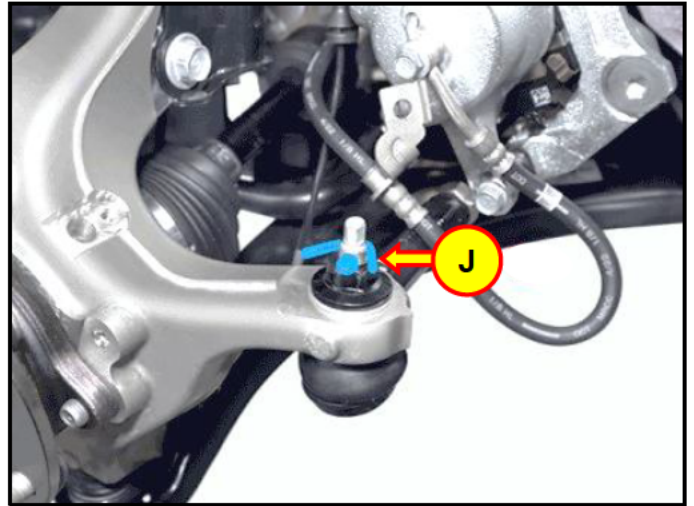
8. Using a plastic hammer, separate the driveshaft axle (I) from the hub assembly.

NOTICE

Use a plastic hammer to prevent damage to the driveshaft axle.



9. Remove the tie rod end split pin (J).



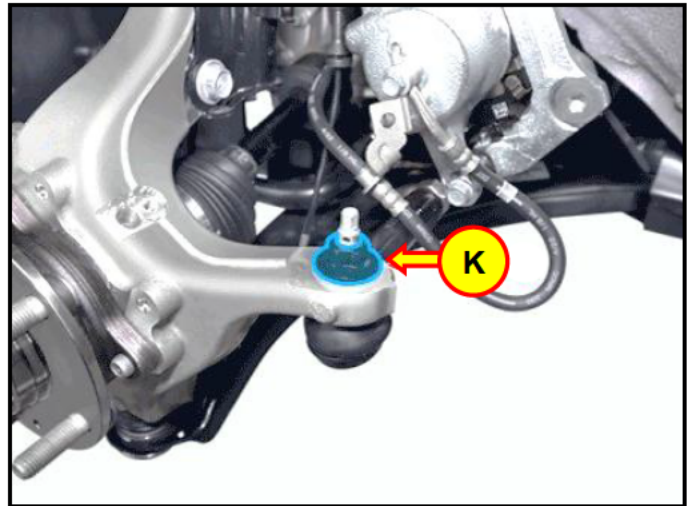
10. Remove the nut (K).

Tightening Torque:

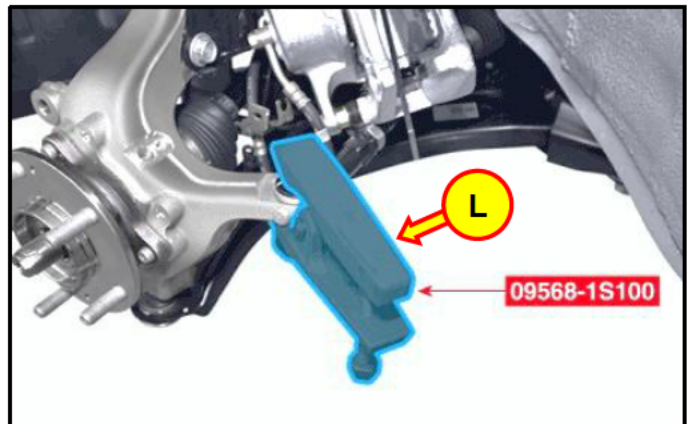
lb-ft	80
N.m	108

NOTICE

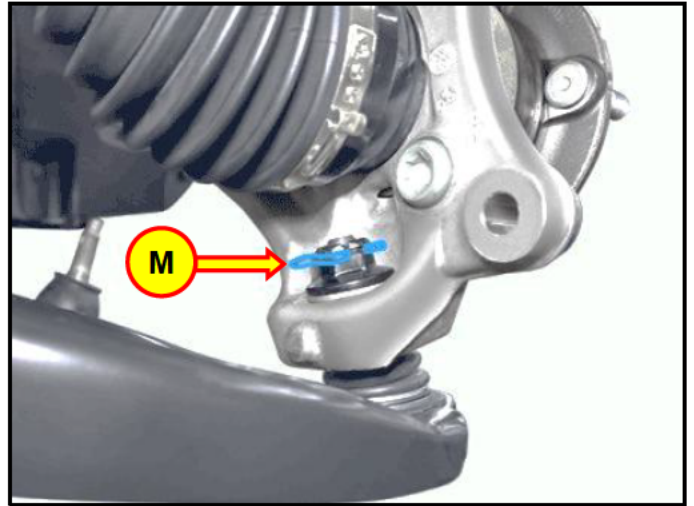
The washer, split pin, and nut **MUST** be replaced with the new parts supplied in the kit.



11. Separate the tie rod end ball joint by using the ball joint puller SST (L) (09568-1S100).



12. Remove the split pin (M) from the lower ball joint.



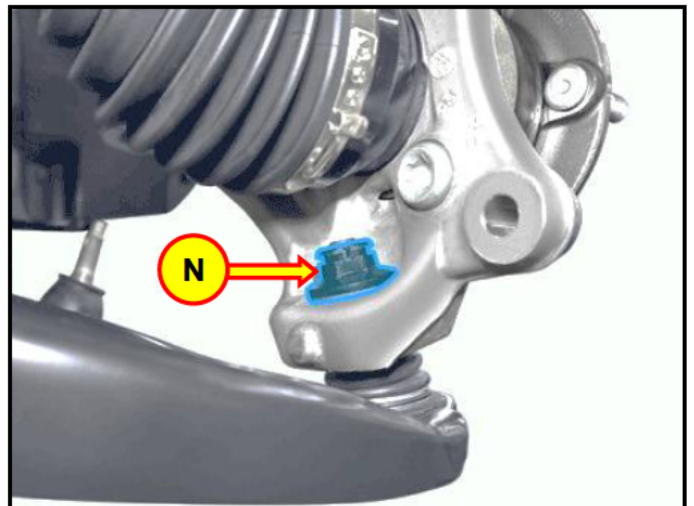
13. Remove the castle nut (N).

Tightening Torque:

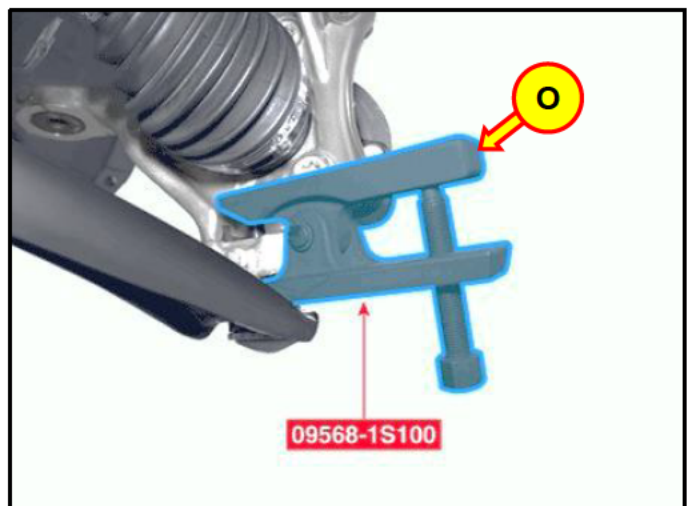
lb-ft	80
N.m	108

NOTICE

The washer, split pin, and nut **MUST** be replaced with the new parts supplied in the kit.



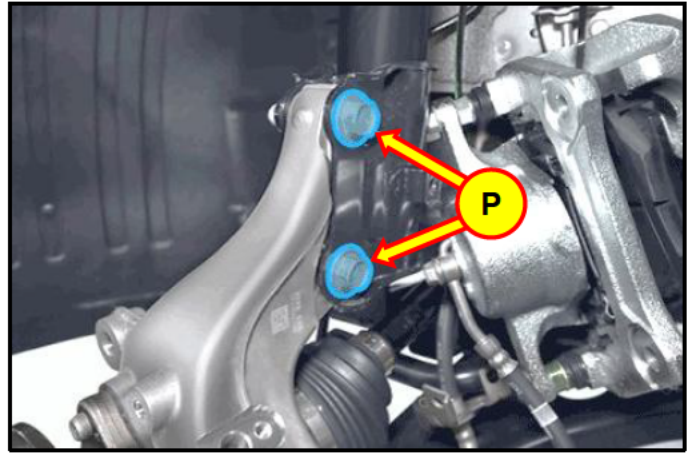
14. Separate the front lower arm ball joint by using the ball joint puller SST (O) (09568-1S100).



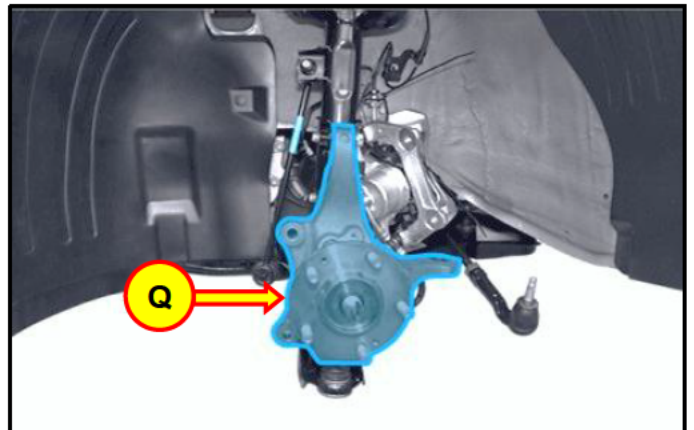
15. Remove the front strut lower bolts and nuts (P).

Tightening Torque:

lb-ft	123
N.m	168



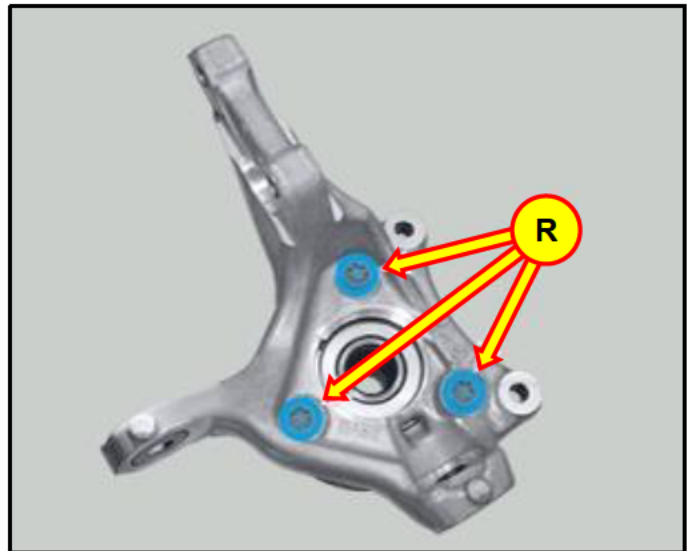
16. Remove the front steering knuckle assembly (Q).



17. Remove the front hub bearing from the front steering knuckle after removing the bolts (R).

Tightening Torque:

lb-ft	101
N.m	137



18. Install the removed front hub bearing onto the new front steering knuckle.

Tightening Torque:

lb-ft	101
N.m	137

19.

DIGITAL DOCUMENTATION



Using the STUI camera function, take a photo of the new front steering knuckle with the hub bearing installed.

Upload the photos to STUI.

NOTE: If the STUI camera function is **NOT** used, write the last 6 digits of the VIN and date of repair on a piece of paper to include in the photo.

LH Side



RH Side



20. Reinstall all parts in the reverse order of the removal process.
21. Perform a wheel alignment by referring to the shop manual:
 - **Suspension System > Tires/Wheels > Alignment > Adjustment**
22. Verify proper vehicle operation.
23. The service procedure is now complete.