



GROUP	MODEL
Safety Recall Campaign	2021-2024MY K5 (DL3a) w/1.6L T-GDI
NUMBER	DATE
SC356 (Rev 1, 02/05/2026)	January 2026

## SAFETY RECALL CAMPAIGN

SUBJECT:

### FUEL TANK INSPECTION/REPLACEMENT AND PCSV CHECK VALVE AND ECU SW UPGRADE (SC356)

#### NOTICE

**This bulletin has been revised to include additional information. New/revised sections of this bulletin are indicated by a black bar in the margin area.**

This bulletin provides information to 1) replace the Purge Control Solenoid Valve (PCSV) check valve and 2) inspect the fuel evaporative system and, if necessary, replace the fuel tank on 2021-2024MY K5 (DL3a) vehicles equipped with a Gamma II 1.6L T-GDI engine, produced from March 27, 2020 through January 23, 2024. This bulletin also provides information to upgrade the ECU software logic. The purge control system check valve, which controls the direction of airflow from the charcoal canister to the engine, may deteriorate over time, allowing pressurized air to flow from the intake manifold into the fuel tank. If this occurs, the fuel tank may expand and contact the hot exhaust pipe components. If the vehicle continues to be driven in this condition for a prolonged period, localized melting of the fuel tank may occur, possibly resulting in a fuel leak. In rare cases, this may lead to a fire, increasing the risk of injury. The subject vehicles may experience a popping sound from the fuel tank area, illumination of the check engine light (CEL), and/or vehicle running rough.

Follow the procedure outlined in this publication to replace the PCSV and inspect the fuel evaporative system and, if necessary, replace the fuel tank. Additionally, confirm the latest software has been applied. Before conducting the procedure, verify that the vehicle is included in the list of affected VINs.

#### NOTICE

**There is no charge to the vehicle owner for this repair. Under applicable law, you may not sell or otherwise deliver any affected vehicle until it has been repaired pursuant to the procedures set forth in this bulletin.**

Repair status for a VIN is provided on KDealer+ (Service → Warranty Coverage → Warranty Coverage Inquiry → Campaign Information). Not completed Recall / Service Action reports are available on KDealer+ (Consumer Affairs → Not Completed Recall → Recall VIN → Select Report), which includes a list of affected vehicles.

SUBJECT: **FUEL TANK INSPECTION/REPLACEMENT AND PCSV CHECK VALVE AND ECU SW UPGRADE (SC356)**

**Flowchart:**

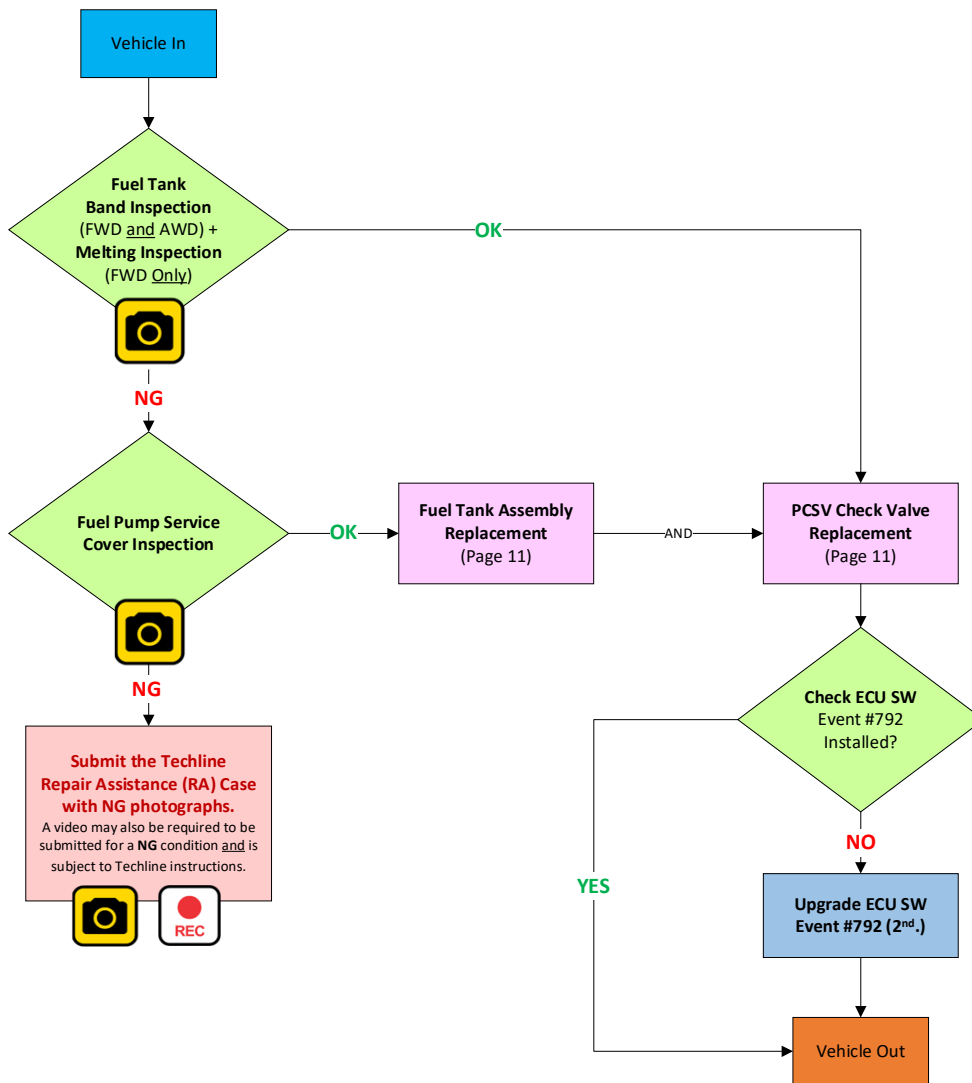
1. **'FUEL TANK INSPECTION'**

**Perform both, the Fuel Tank Band & Melting Inspections (Pages 3-4):**

- If both inspections are **(OK)** - Proceed to replace the PCSV Check Valve and check if the Latest ECU SW is installed. Proceed according to flowchart instructions.
- If either **Fuel Tank Band** or **Melting inspections** are **(NG)**, proceed to inspect the fuel pump service cover for potential RA case submission. (A fuel tank replacement may be required)

2. **'FUEL PUMP SERVICE COVER INSPECTION'** (Page 5)

- If **(NG)** open a Techline RA Case, provide the required photos and follow Techline Instructions.
- If **(OK)** Replace the fuel tank assembly, replace the PCSV Check Valve and check if the latest ECU SW is installed. Proceed according to flowchart instructions.



SUBJECT:

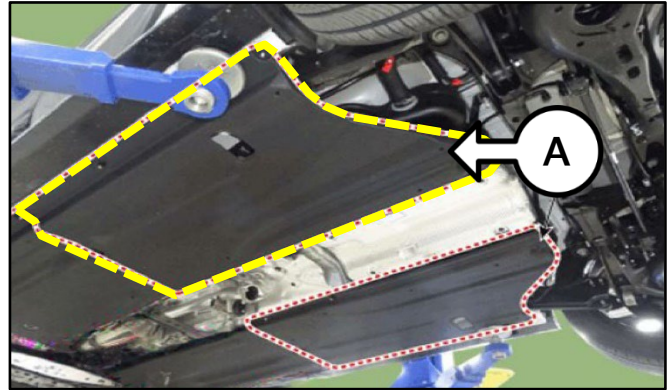
## FUEL TANK INSPECTION/REPLACEMENT AND PCSV CHECK VALVE AND ECU SW UPGRADE (SC356)

### Inspection Procedure: (Fuel Tank Bands and Melting)

1. Remove the left rear floor under cover (A).

#### ⓘ IMPORTANT

Fuel tank band inspection area for **FWD** and **AWD** models are different. **Both Fuel tank band and melting inspection must be checked for an OK or NG condition. Refer to the flowchart instructions on page 2.**



#### 🔧 TECH TIP

Be sure to use a millimeter (mm) measurement ruler with an end starting at zero 'Ø' for taking accurate measurement.



- 2a. Measure the gap between the inner red circled surface of fuel tank (B) and the top side of the **Left** fuel tank band (C), as shown.

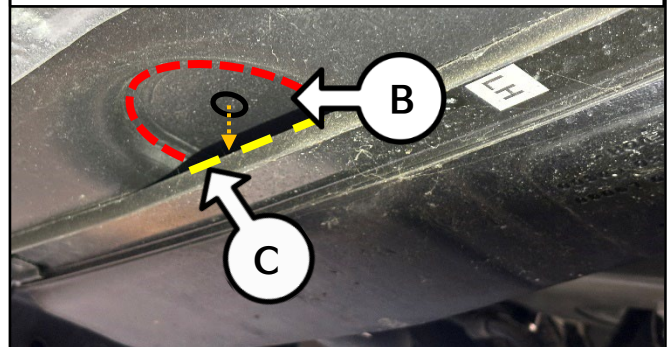
**Note:** **FWD** (Step 2b.) or **AWD** (Step 2c.)

- 2b. **FWD/2WD:**

- If the gap between the fuel tank and the top side of the fuel tank bands measures 24mm or LESS (OK), proceed to step 3 and follow the flowchart instructions.
- If the gap between the fuel tank and the top of the fuel tank bands measures 25mm or MORE (NG), take a clear photo of the NG condition and then proceed to step 3 and follow the flowchart instructions.



From the inner/bottom center surface of the red circled area, measure up to the top of the fuel tank band outlined by the yellow line (shown below). **If NG, take a photo.**



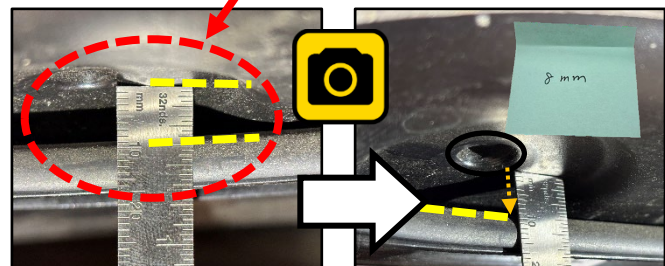
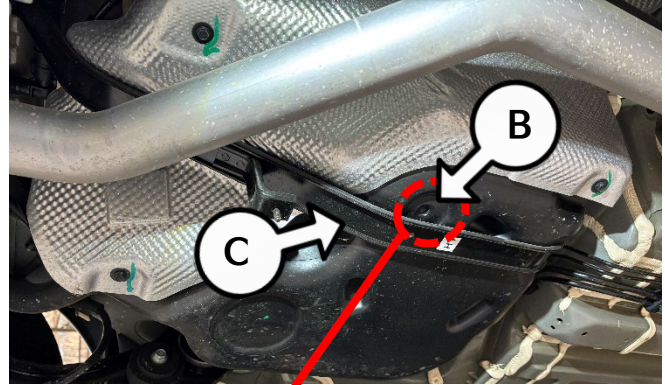
# FUEL TANK INSPECTION/REPLACEMENT AND PCSV CHECK VALVE AND ECU SW UPGRADE (SC356)

## AWD/4WD:

2c. **Left Hand Fuel Tank Band (C).**

- ❖ **Locate LR tank area (driver rear)**
- ❖ **Measure from top of the fuel tank**

- **If the gap between the fuel tank and the top of the fuel tank bands measures 10mm (1 cm) or LESS (OK),** proceed to Replacement Procedure: (PCSV Check Valve) and follow the flowchart instructions.
- **If the gap between the fuel tank and the top of the fuel tank bands measures 11mm or MORE (NG),** take a clear photo of the **NG** condition and then proceed to step 5 to inspect the fuel pump service cover.



From the inner/bottom center surface of the red circled area, measure up to the top of the fuel tank band outlined by the yellow line (shown below). **If NG, take a photo.**

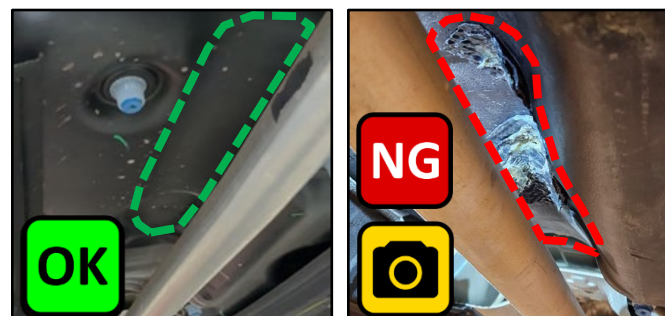
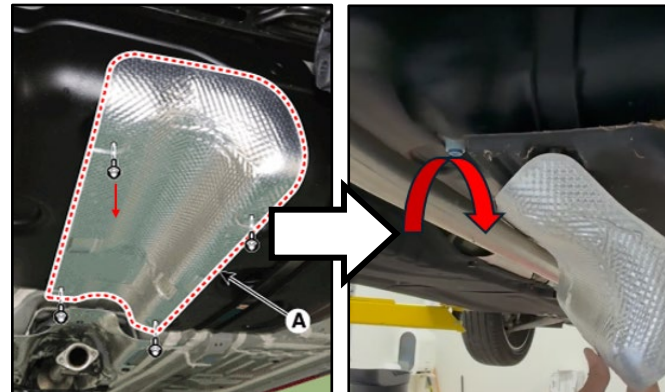
## FWD ONLY:

3. Remove the heat protector shield (removal of the exhaust is not required).

**Note:** In some cases, the heat protector shield may not come loose if the fuel tank surface has previously expanded and is melted/adhered to the heat shield **(NG)**.

4. Inspect the surface of the fuel tank for melting:

- If there is no visible contact from the fuel tank and the shield - no melting of fuel tank surface **(OK)**, follow the flowchart instructions on page 2.
- If there is visible contact and melting of the fuel tank surface to the heat shield **(NG)**, take a clear photo of the **NG** condition and then, proceed to step 5 to inspect the fuel pump service cover.

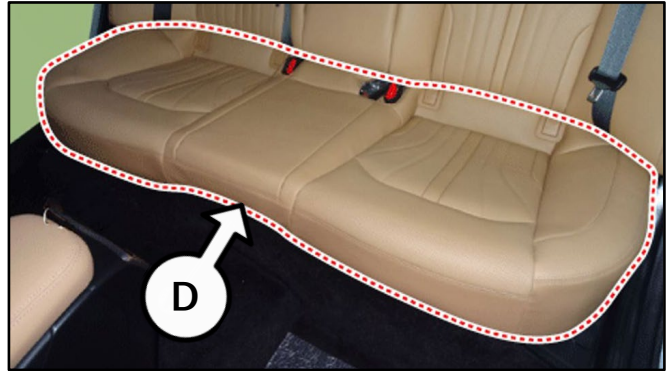


SUBJECT:

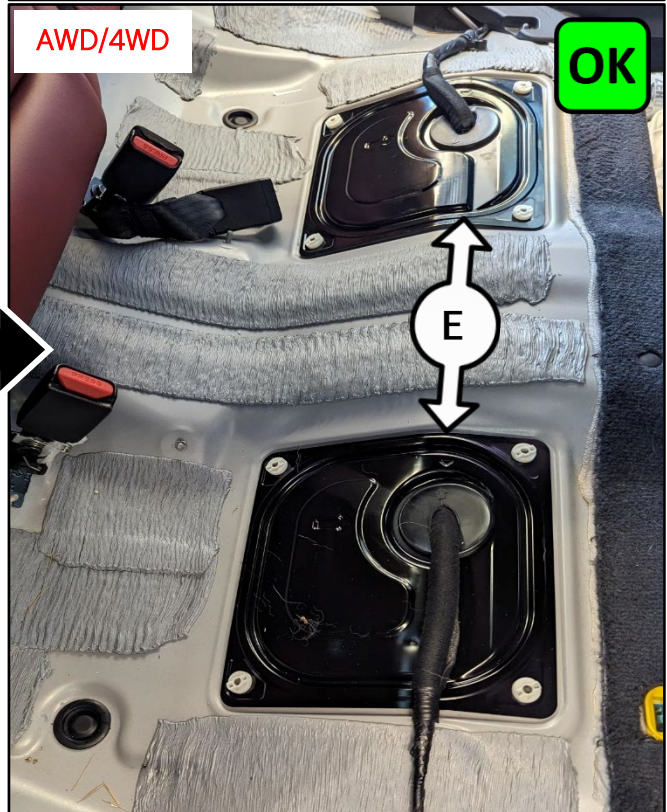
# FUEL TANK INSPECTION/REPLACEMENT AND PCSV CHECK VALVE AND ECU SW UPGRADE (SC356)

## Inspection Procedure: (Fuel Pump Service Cover)

- Remove the 2<sup>nd</sup> row bench seat (D) to access the fuel pump service cover (E).



**Note:** AWD model shown on the right for reference use only, the FWD models shown below feature a single fuel tank service cover access.



- Inspect the seat floor to fuel pump service cover (E) (4 sides) for any visible gaps:

- If a gap is **NOT** present (**OK**), the cover is seated flush with the seat floor panel, follow the instructions on the flowchart on page 2.
- If a gap **IS** present (**NG**), the cover is lifted/detached from the seat floor panel, create a Techline Repair Assistance (RA) case, and take a clear photo of the NG condition using the KDS Warranty Claim Attachment tab, follow the instructions per Techline.



SUBJECT:

## FUEL TANK INSPECTION/REPLACEMENT AND PCSV CHECK VALVE AND ECU SW UPGRADE (SC356)

### ECU Upgrade Procedure:

To correct this condition, the ECU should be reprogrammed using the KDS download, as described in TSB [SST081](#).

#### Upgrade Event Name

792.DL3a Gamma 1.6TGDI ECU Logic Improvement for  
Preventing Fuel Tank Pressure Increase\_2nd

#### NOTICE

- Confirm a fully charged battery (12.3 volts or higher is necessary) is used or utilize a fully charged jump starter box connected to the battery.
- **Ensure the KDS is sufficiently charged at 60% or higher prior to reflash.**
- All ECU upgrades must be performed with the ignition set to the 'ON' position unless otherwise stated.
- **Damaged VCI II units should not be used and promptly replaced.**
- Be careful not to disconnect the VCI-II connected to the vehicle during the ECU upgrade procedure.
- **DO NOT start the engine during ECU upgrade.**
- DO NOT turn the ignition key 'OFF' or interrupt the power supply during ECU upgrade.
- **When the ECU upgrade is completed, turn the ignition 'OFF' and wait 10 seconds before starting the engine.**
- ONLY use approved ECU upgrade software designated for the correct application.


#### IMPORTANT

It is recommended to ALWAYS check the Electronic Parts Catalog (EPC) to locate the ECU Part Number respective to Auto/Manual Mode ROM IDs. DO NOT reference the parts label affixed to the ECU.

#### NOTICE

If a 'Communication Fail' error notice appears or the upgrade cannot be performed, DO NOT disconnect the KDS/VCI-II. Contact GIT America Help Desk at (888) 542-4371 or Techline.

#### NOTICE

Before attempting an ECU upgrade on any Kia model, make sure to first determine whether the applicable model is equipped with an immobilizer  (IMMO) security system. Failure to follow proper procedures may cause the PCM to become inoperative after the upgrade and any claims associated with this repair may be subject to chargeback.

SUBJECT:

## FUEL TANK INSPECTION/REPLACEMENT AND PCSV CHECK VALVE AND ECU SW UPGRADE (SC356)

### ROM ID INFORMATION TABLE:

#### Upgrade Event #792

MY	IMMO	ISG	Type	ECU P/No.	ROM ID	
					Previous	New
21MY	Yes	ISG	2WD	39121 2MKKO	TDLA1NU06F022EOK TDLA1NU06F122EOK TDLA1NU06F223EOK TDLA1NU06F424EOK TDLA1NU06F524EOK TDLA1NU06F52FEOK TDLA1NU06F6FBEOK	TDLA1NU06F7FBEOK
	No			39123 2MKKO	TDLA1NU06E022EOK TDLA1NU06E122EOK TDLA1NU06E223EOK TDLA1NU06E424EOK TDLA1NU06E524EOK TDLA1NU06E52FEOK TDLA1NU06E6FBEOK	TDLA1NU06E7FBEOK
	Yes	NON-ISG	2WD	39121 2MKTO	TDLA1NU06F022E03 TDLA1NU06F122E03 TDLA1NU06F223E03 TDLA1NU06F424E03 TDLA1NU06F524E03 TDLA1NU06F52FE03 TDLA1NU06F6FBEO3	TDLA1NU06F7FBEO3
	No			39123 2MKTO	TDLA1NU06E022E03 TDLA1NU06E122E03 TDLA1NU06E223E03 TDLA1NU06E424E03 TDLA1NU06E524E03 TDLA1NU06E52FE03 TDLA1NU06E6FBEO3	TDLA1NU06E7FBEO3
	Yes	NON-ISG	4WD	39121 2MKVO	TDLA1NU06F026K03 TDLA1NU06F126K03 TDLA1NU06F12FK03 TDLA1NU06F2FBK03	TDLA1NU06F3FBK03
	No			39123 2MKVO	TDLA1NU06E026K03 TDLA1NU06E126K03 TDLA1NU06E12FK03 TDLA1NU06E2FBK03	TDLA1NU06E3FBK03

*Continued on page 8.*

*To verify the vehicle is affected, be sure to check the Calibration Identification of the vehicle's ECM ROM ID and reference the Information Table as necessary.*



SUBJECT:

## FUEL TANK INSPECTION/REPLACEMENT AND PCSV CHECK VALVE AND ECU SW UPGRADE (SC356)

### ROM ID INFORMATION TABLE:

#### Upgrade Event #792

MY	IMMO	ISG	Type	ECU P/No.	ROM ID	
					Previous	New
22MY	Yes	ISG	2WD	39121 2MKK1	TDLA2NU06F02EE0K TDLA2NU06F12FE0K TDLA2NU06F22FE0K TDLA2NU06F3FBE0K	TDLA2NU06F4FBE0K
	No			39123 2MKK1	TDLA2NU06E02EE0K TDLA2NU06E12FE0K TDLA2NU06E22FE0K TDLA2NU06E3FBE0K	TDLA2NU06E4FBE0K
	Yes	NON-ISG	2WD	39121 2MKT1	TDLA2NU06F02EE03 TDLA2NU06F12FE03 TDLA2NU06F22FE03 TDLA2NU06F3FBE03	TDLA2NU06F4FBE03
	No			39123 2MKT1	TDLA2NU06E02EE03 TDLA2NU06E12FE03 TDLA2NU06E22FE03 TDLA2NU06E3FBE03	TDLA2NU06E4FBE03
	Yes	NON-ISG	4WD	39121 2MKV1	TDLA2NU06F02EK03 TDLA2NU06F12FK03 TDLA2NU06F22FK03 TDLA2NU06F3FBK03	TDLA2NU06F4FBK03
	No			39123 2MKV1	TDLA2NU06E02EK03 TDLA2NU06E12FK03 TDLA2NU06E22FK03 TDLA2NU06E3FBK03	TDLA2NU06E4FBK03

*Continued on page 9.*

*To verify the vehicle is affected, be sure to check the Calibration Identification of the vehicle's ECM ROM ID and reference the Information Table as necessary.*



SUBJECT:

## FUEL TANK INSPECTION/REPLACEMENT AND PCSV CHECK VALVE AND ECU SW UPGRADE (SC356)

### ROM ID INFORMATION TABLE:

#### Upgrade Event #792

MY	IMMO	ISG	Type	ECU P/No.	ROM ID	
					Previous	New
23MY	Yes	ISG	2WD	39121 2MKK2	TDLA3NU06F02NE0K TDLA3NU06F1NAE0K TDLA3NU06F2NBE0K	TDLA3NU06F3NBE0K
	No				TDLA3NU06E02NE0K TDLA3NU06E1NAE0K TDLA3NU06E2NBE0K	TDLA3NU06E3NBE0K
	Yes	NON-ISG	2WD	39121 2MKT2	TDLA3NU06F02NE03 TDLA3NU06F1NAE03 TDLA3NU06F2NBE03	TDLA3NU06F3NBE03
	No				TDLA3NU06E02NE03 TDLA3NU06E1NAE03 TDLA3NU06E2NBE03	TDLA3NU06E3NBE03
	Yes	NON-ISG	4WD	39121 2MKV2	TDLA3NU06F02NK03 TDLA3NU06F1NAK03 TDLA3NU06F2NBK03	TDLA3NU06F3NBK03
	No				TDLA3NU06E02NK03 TDLA3NU06E1NAK03 TDLA3NU06E2NBK03	TDLA3NU06E3NBK03
24MY	Yes	ISG	2WD	39121 2MKK3	TDLA4NU06F02YE0K TDLA4NU06F1YAE0K	TDLA4NU06F2YAE0K
	No				TDLA4NU06E02YE0K TDLA4NU06E1YAE0K	TDLA4NU06E2YAE0K
	Yes	NON-ISG	2WD	39121 2MKT3	TDLA4NU06F02YE03 TDLA4NU06F1YAE03	TDLA4NU06F2YAE03
	No				TDLA4NU06E02YE03 TDLA4NU06E1YAE03	TDLA4NU06E2YAE03
	Yes	NON-ISG	4WD	39121 2MKV3	TDLA4NU06F02YK03 TDLA4NU06F1YAK03	TDLA4NU06F2YAK03
	No				TDLA4NU06E02YK03 TDLA4NU06E1YAK03	TDLA4NU06E2YAK03

*To verify the vehicle is affected, be sure to check the Calibration Identification of the vehicle's ECM ROM ID and reference the Information Table as necessary.*



SUBJECT:

## FUEL TANK INSPECTION/REPLACEMENT AND PCSV CHECK VALVE AND ECU SW UPGRADE (SC356)

Refer to [TSB SST081](#) for instructions to upgrade the '**ENGINE**' system:

### UPGRADE EVENT:

- 792.DL3a Gamma 1.6TGDI ECU Logic Improvement for Preventing Fuel Tank Pressure Increase\_2nd

#### NOTICE

**Prior to performing the ECU upgrade, be sure to check that the KDS is fully charged.**

ENGINE   Engine				
792.DL3a Gamma 1.6TGDI ECU logic improvement for preventing fuel tank pressure increase_2nd				
<b>792.DL3a Gamma 1.6TGDI ECU logic improvement for preventing fuel tank pressure increase_2nd</b>				
VCI	Sub Event	TSB	Update	
	DL3a -IMMO +ISG (21MY) : 39123-2MKK0			
	DL3a +IMMO/SMK +ISG (21MY) : 39121-2MKK0			
	DL3a -IMMO (21MY) : 39123-2MKT0			
	DL3a +IMMO/SMK (21MY) : 39121-2MKT0			
	DL3a -IMMO 4WD (21MY) : 39123-2MKV0			
	DL3a +IMMO/SMK 4WD (21MY) : 39121-2MKV0			

### Manual Mode:

#### NOTICE

**The manual upgrade should ONLY be performed if the automatic upgrade fails.**

**If the automatic upgrade fails, turn the ignition 'OFF' for about 10 seconds then place it back in the 'ON' position to reset the control unit BEFORE performing manual upgrade.**

See table below for 'Manual Mode' passwords and refer to TSB [SST081](#) for instructions.

### Manual Mode ECU Upgrade Passwords

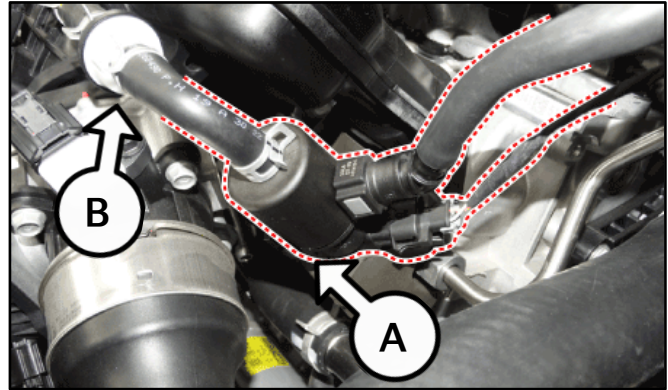
Menu	Password
DL3a -IMMO +ISG (21MY): 39123-2MKK0	1601
DL3a +IMMO/SMK +ISG (21MY): 39121-2MKK0	1602
DL3a -IMMO (21MY): 39123-2MKT0	1603
DL3a +IMMO/SMK (21MY): 39121-2MKT0	1604
DL3a -IMMO 4WD (21MY): 39123-2MKV0	1605
DL3a +IMMO/SMK 4WD (21MY): 39121-2MKV0	1606
DL3a -IMMO +ISG (22MY): 39123-2MKK1	1607
DL3a +IMMO/SMK +ISG (22MY): 39121-2MKK1	1608
DL3a -IMMO (22MY): 39123-2MKT1	1609
DL3a +IMMO/SMK (22MY): 39121-2MKT1	1610
DL3a -IMMO 4WD (22MY): 39123-2MKV1	1611
DL3a +IMMO/SMK 4WD (22MY): 39121-2MKV1	1612
DL3a -IMMO +ISG (23MY): 39123-2MKK2	1613
DL3a +IMMO/SMK +ISG (23MY) : 39121-2MKK2	1614
DL3a -IMMO 4WD (23MY) : 39123-2MKT2	1615
DL3a +IMMO/SMK (23MY) : 39121-2MKT2	1616
DL3a -IMMO (23MY) : 39123-2MKV2	1617
DL3a +IMMO/SMK 4WD (23MY) : 39121-2MKV2	1618
DL3a -IMMO +ISG (24MY) : 39123-2MKK3	1619
DL3a +IMMO/SMK +ISG (24MY) : 39121-2MKK3	1620
DL3a -IMMO (24MY) : 39123-2MKT3	1621
DL3a +IMMO/SMK (24MY) : 39121-2MKT3	1622
DL3a -IMMO 4WD (24MY) : 39123-2MKV3	1623
DL3a +IMMO/SMK 4WD (24MY) : 39121-2MKV3	1624

SUBJECT:

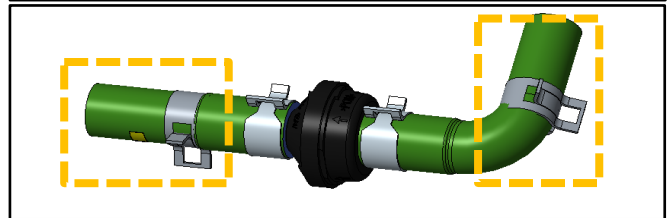
## FUEL TANK INSPECTION/REPLACEMENT AND PCSV CHECK VALVE AND ECU SW UPGRADE (SC356)

### Replacement Procedure: (PCSV Check Valve)

1. Open the hood and disconnect the 12V battery negative (-) cable.
2. Replace the purge control solenoid valve (PCSV) (A) by referring to “Emissions Control System → Evaporative Emission Control → Purge Control Solenoid Valve → Repair procedures (Removal & Installation)” in the applicable Shop Manual on KGIS.



**Note:** The new PCSV check valve (B) assembly comes pre-assembled with new hose clamps and vapor hoses.



### Replacement Procedure: (Fuel Tank)

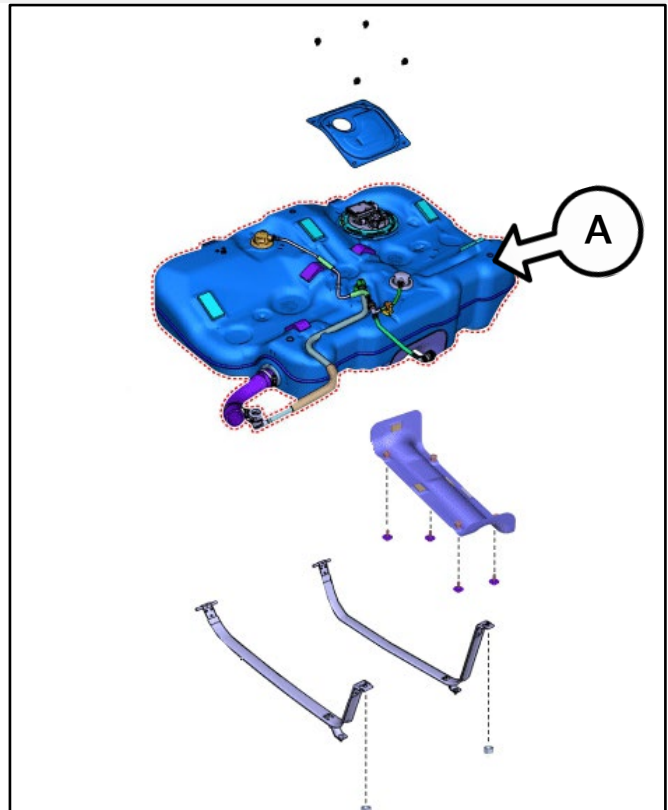
1. Replace the fuel tank (A) by referring to “Engine Control / Fuel System → Fuel Delivery System → Fuel Tank → Repair procedures” in the applicable Shop Manual on KGIS.

**Note:** Be sure to replace all fuel tank related parts such as:

1. Fuel Tank (15 Gal. or 16 Gal.)
2. Fuel Tank Pads
3. Fuel Tank Heat Protector
4. Fuel Tank Bands
5. Ring Lock (AWD)

**In addition, replace the non-reusable parts:**

1. Rear Muffler Gasket
2. Fuel Pump Service Cover (if damaged)
3. Fuel Pump Packing (if damaged)
4. Propeller Shaft Bolts (AWD only)



2. Reinstall all removed parts in reverse order of removal.
3. Perform the ECU SW Upgrade (Pages 6-10).
4. Confirm normal vehicle operation.

SUBJECT: **FUEL TANK INSPECTION/REPLACEMENT AND PCSV CHECK VALVE AND ECU SW UPGRADE (SC356)**

**Since SC288 (Emissions Service Campaign) is superseded by this Safety Recall, please refer to the information below.**

**ATTENTION - THE PROOF OF CORRECTION CARD AND CAMPAIGN COMPLETION LABEL ARE RESTRICTED ONLY TO DEALERS IN THE FOLLOWING STATES:**

California, Connecticut, Delaware, Massachusetts, Maine, Maryland, New Jersey, New York, Oregon, Pennsylvania, Rhode Island, Vermont, and Washington. See Parts Information below to order the Proof of Correction Card and Campaign Completion Label from the PDC.

**VEHICLE EMISSION RECALL - PROOF OF CORRECTION CARD**

A Vehicle Emission Recall - Proof of Correction card must be filled out for all vehicles registered in California, Connecticut, Delaware, Massachusetts, Maine, Maryland, New Jersey, New York, Oregon, Pennsylvania, Rhode Island, Vermont, and Washington. Residents of these states, who own an affected vehicle, will be required to possess a Vehicle Emission Recall - Proof of Correction card as evidence of voluntary service campaign completion, when they apply for vehicle registration renewal.

**WHAT TO DO WITH THE CARD:**

The Vehicle Emission Recall - Proof of Correction card must be completed by the Dealership's Service Manager using a permanent ink pen. A fine point pen is recommended. When filling in the information, copy the information directly from the vehicle, not the repair order. ALL INFORMATION MUST BE PRINTED AND NEAT.

**NOTE: DO NOT COMPLETE THE CARD UNLESS THE SAFETY RECALL CAMPAIGN WORK IS COMPLETED.**

The copy of the card shown below indicates the areas to be filled in. Each area must be filled in. The completed card should be given to the owner of the vehicle upon completion of the Campaign and placement of the Campaign Completion Label outlined below.

**FILLING OUT AND APPLYING THE CAMPAIGN COMPLETION LABEL (CA and S.177 STATES ONLY):**

The dealer must fill in the Dealer Code and Date information fields on the Campaign Completion Label. Once complete, affix the campaign completion label under the hood of the vehicle, as shown below.

**CA and S.177 States Only:** Apply SC356 Campaign Completion Label onto the body in the area next to the shock tower, as shown. **NOTE: Be sure to clean the mounting surface to ensure proper label adhesion.**



SUBJECT:

## FUEL TANK INSPECTION/REPLACEMENT AND PCSV CHECK VALVE AND ECU SW UPGRADE (SC356)




### AFFECTED VEHICLE RANGE:

Model	Production Date Range
K5 (DL3a)	March 27, 2020 to January 23, 2024

### REQUIRED TOOL:

Tool Name	Part Number	Figure	Comments
KDS	N/A		Kia Diagnostic System

### REQUIRED PART:

Part Name	Part Number	Figure	Qty.	Comments
Vehicle Emissions Recall Proof of Correction Card	UT160 SC356 <u>or</u> UT160 SC000		1	Dealers may receive PN UT160/UT161 ending in SC000. Manually complete and write the TSB #SC356.
Campaign Completion Label	UT161 SC356 <u>or</u> UT161 SC000		1	
PCSV Check Valve Assy	28918 2M431QQK		1	Requires a VIN entry for parts ordering

**Note: DO NOT order PN 28918 2M431QQK for stocking purposes, related to this Campaign. Supply is very limited. Until supply stabilizes, please confirm part availability before scheduling customers. Please be sure to expedite warranty claim filing.**

Part Name	Part Number - <b>FWD</b>	Part Number - <b>AWD</b>	Qty.	Comments
Fuel Tank	31150 L0600QQK (56L/15 Gal.) 31150 L0000QQK (60L/16 Gal.)	31150 L3600QQK (60L/16 Gal.)	1	Requires a VIN entry for parts ordering.  Replace the fuel tank assembly <u>only</u> after: (1) Fuel Tank Inspection (NG) or (2) RA Case has been reviewed and approved by Techline.
Fuel Tank Heat Protector	31220 L1000QQK	31220 L3600QQK	1	
Fuel Tank Band (LH)	31210 L1000QQK	31210 L3600QQK	1	
Fuel Tank Band (RH)	31211 L1000QQK	31211 L3600QQK	1	
Rear Muffler Gasket	28751 2T000QQK		1	
Fuel Pump Service Cover	31107 L1000QQK		1	
Fuel Pump Packing	31115 0W000QQK		1	
		31115 0W000QQK	2	
Fuel Tank Pads	31101 L1100QQK	31101 L3600QQK	2	
	31101 C1000QQK		5	
	31101 L1000QQK	31101 L1000QQK	2	
	31101 3X000QQK		1	
		31101 C8000QQK	8	
Ring Lock		31152 0W000QQK	1	
Propeller Shaft Bolts		11435 10256KQQK	1	



SUBJECT: **FUEL TANK INSPECTION/REPLACEMENT AND  
PCSV CHECK VALVE AND ECU SW UPGRADE (SC356)**

**WARRANTY INFORMATION:**

**N Code: N99 C Code: C99**

Claim Type	Causal P/N	Qty.	Repair Description	Labor Op Code	Op Time	Replacement P/N	Qty.
R	59133 2H000	0	(SC356) Fuel Tank Inspection (OK)+ PCSV Replacement + Check ECU S/W Version (OK) (FWD and AWD)	261A01R0	0.5 M/H	28918 2M431QQK	1
			(SC356) Fuel Tank Inspection (OK) + PCSV Replacement + Check ECU S/W Version (NG) + ECU S/W Update (FWD and AWD)	261A01R1	0.7 M/H	28918 2M431QQK	1
	59133 2H000	0	(SC356) Fuel Tank Inspection (NG) + Fuel Pump Cover Inspection (OK) + Fuel Tank Replacement + PCSV Replacement + Check ECU S/W Version (OK) + (FWD)	261A01R2	1.6 M/H	28918 2M431QQK	1
						31150 L0600QQK	1
						or	
						31150 L0000QQK	1
						31220 L1000QQK	1
						31210 L1000QQK	1
						31211 L1000QQK	1
						28751 2T000QQK	1
						31107 L1000QQK	1
						31115 OW000QQK	1
	31101 L1100QQK	2					
	31101 C1000QQK	5					
	31101 L1000QQK	2					
31101 3X000QQK	1						
59133 2H000	0	(SC356) Fuel Tank Inspection (NG) + Fuel Pump Cover Inspection (OK) + Fuel Tank Replacement + PCSV Replacement + Check ECU S/W Version (OK) + (AWD)	261A01R3	1.8 M/H	28918 2M431QQK	1	
					31150 L3600QQK	1	
					31220 L3600QQK	1	
					31210 L3600QQK	1	
					31211 L3600QQK	1	
					28751 2T000QQK	1	
					31107 L1000QQK	1	
					31115 OW000QQK	2	
					31101 L3600QQK	2	
					31101 L1000QQK	2	
31101 C8000QQK	8						
31152 OW000QQK	1						
11435 10256KQQK	1						

**Note:** Refer to [Warranty Bulletin 2026-04](#) for claim submission procedures. When substitute transportation is provided, manually enter sublet code 'X2' for rental expense reimbursement or one roundtrip rideshare expense. \*A photo of the 'NG' condition, as described in this TSB MUST be attached to the claim using Warranty Claim Attachment Type 'XX - Other' for LOP 261A01R2, 261A01R3, 261A01R4 and 261A01R5.

*Continued on page 15.*



SUBJECT:

## FUEL TANK INSPECTION/REPLACEMENT AND PCSV CHECK VALVE AND ECU SW UPGRADE (SC356)

### WARRANTY INFORMATION:

**N Code : N99 C Code: C99**

Claim Type	Causal P/N	Qty.	Repair Description	Labor Op Code	Op Time	Replacement P/N	Qty.
R	59133 2H000	0	(SC356) Fuel Tank Inspection (NG) + Fuel Pump Cover Inspection (OK) + Fuel Tank Replacement + PCSV Replacement + Check ECU S/W Version (NG) + ECU S/W update (FWD)	261A01R4	1.8 M/H	28918 2M431QQK	1
						31150 L0600QQK	1
						or	
						31220 L1000QQK	1
						31210 L1000QQK	1
						31211 L1000QQK	1
						28751 2T000QQK	1
						31107 L1000QQK	1
						31115 0W000QQK	1
						31101 L1100QQK	2
		31101 C1000QQK	5				
		31101 L1000QQK	2				
		31101 3X000QQK	1				
		0	(SC356) Fuel Tank Inspection (NG) + Fuel Pump Cover Inspection (OK) + Fuel Tank Replacement + PCSV Replacement + Check ECU S/W Version (NG) + ECU S/W update (AWD)	261A01R5	2.0 M/H	28918 2M431QQK	1
						31150 L3600QQK	1
						31220 L3600QQK	1
						31210 L3600QQK	1
						31211 L3600QQK	1
						28751 2T000QQK	1
						31107 L1000QQK	1
31115 0W000QQK	2						
31101 L3600QQK	2						
31101 L1000QQK	2						
31101 C8000QQK	8						
31152 0W000QQK	1						
11435 10256KQQK	1						
R	59133 2H000	0	(SC356) Fuel Tank Inspection (NG) + Fuel Pump Cover Inspection (NG) (Techline RA Open Required) (FWD or AWD)	261A01R6	0.4 M/H	N/A	0

**Note:** Refer to [Warranty Bulletin 2026-04](#) for claim submission procedures. When substitute transportation is provided, manually enter sublet code 'X2' for rental expense reimbursement or one roundtrip rideshare expense. \*A photo of the 'NG' condition, as described in this TSB MUST be attached to the claim using Warranty Claim Attachment Type 'XX - Other' for LOP 261A01R2, 261A01R3, 261A01R4 and 261A01R5.

